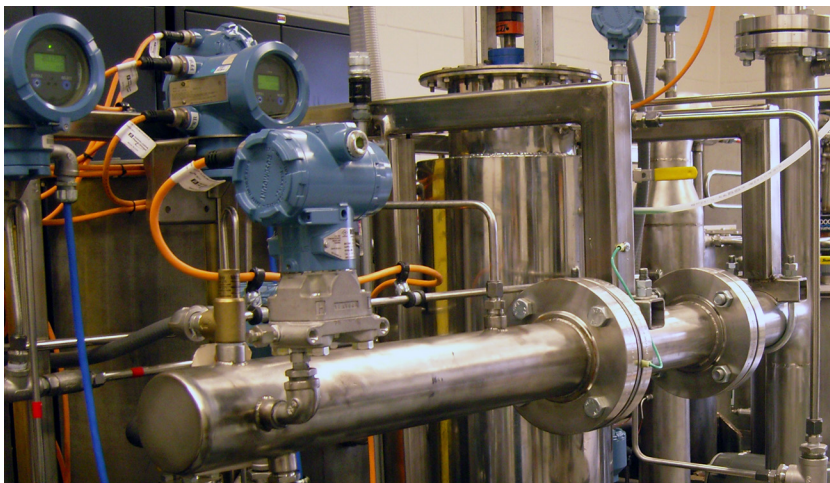


# Process Technology



From biofuels to chemical plants, industrial companies are always in need of technicians that can run their industrial processes. Process Technology is a high-paying career with excellent benefits and flexible schedules. ASU Mid-South will train you on state of the art equipment, and we offer supportive, clean environments that will get you started in a career with a huge amount of growth potential.

## Potential Career & Earnings

Entry level positions ranging from an average of **\$14 - \$25 per hour**, depending on company and position of placement.



ARKANSAS STATE UNIVERSITY  
**MID-SOUTH**

2000 West Broadway | West Memphis, AR | 870.733.6728 | [www.asumidsouth.edu](http://www.asumidsouth.edu)

ASU Mid-South offers a 13-week Accelerated Program that will fully train you for potential entry level employment in the Process Technology industry.

### Accelerated Program Courses:

PTEC 1004 <b>Safety, Health &amp; Environment</b> .....	4 credits (90 contact hours)
PTEC 1024 <b>Introduction to Process Technology</b> .....	4 credits (90 contact hours)
PTEC 1003 <b>Process Quality</b> .....	3 credits (60 contact hours)
PTEC 1204 <b>Process Technology I: Equipment</b> .....	4 credits (90 contact hours)
PTEC 1213 <b>Process Instrumentation I</b> .....	3 credits (60 contact hours)
TOTAL: 390 contact hours	

For more information about the cutting-edge Process Technology program at Arkansas State University Mid-South, please visit our website at [www.asumidsouth.edu](http://www.asumidsouth.edu) or contact the Admissions Office at **870.733.6728** or [admissions@midsouthcc.edu](mailto:admissions@midsouthcc.edu).

This workforce product was funded by a grant awarded by the U.S. Department of Labor's Employment and Training Administration. The product was created by the grantee and does not necessarily reflect the official position of the U.S. Department of Labor. The U.S. Department of Labor makes no guarantees, warranties, or assurances of any kind, express or implied, with respect to such information, including any information on linked sites and including, but not limited to, accuracy of the information or its completeness, timeliness, usefulness, adequacy, continued availability, or ownership.

Students with disabilities verified by a qualified physician are entitled to reasonable accommodations needed to complete their educational goals while attending ASU Mid-South.

For Gainful Employment information, please visit [www.asumidsouth.edu/index.php?id=367](http://www.asumidsouth.edu/index.php?id=367).



ARKANSAS STATE UNIVERSITY  
**MID-SOUTH**