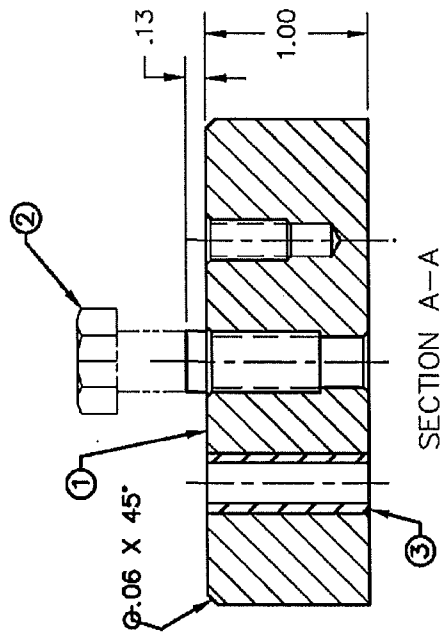
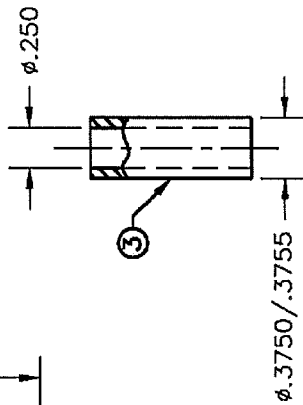
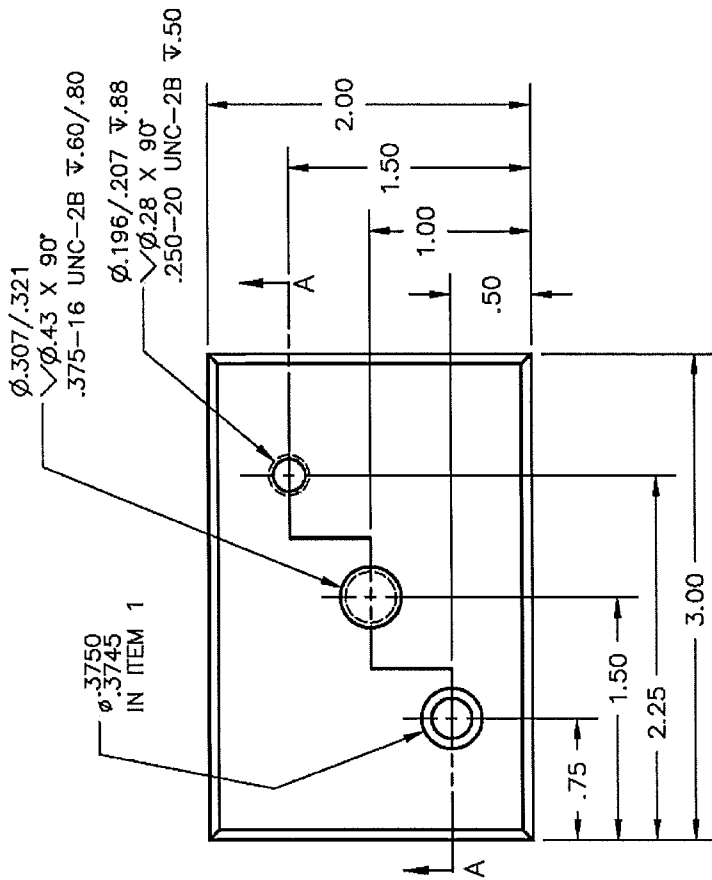




REV	DESCRIPTION	DATE	APPROVED
A	UPDATED DRAWING AND TITLE BLOCK	3/7/05	LW
B	UPDATED .375-16 HOLE	3/31/05	LW

- Notes:
1. INSTALL STUD, CUT AND FILE .13 ABOVE SURFACE
 2. BLOCK FREE OF SHARP EDGES OR BURRS
 3. BROKEN EDGES .015" MAX



ITEM	DESCRIPTION	SIZE	MATERIAL
3	BUSHING	$\phi .3750 / .3755$ OD X .250 ID	BRONZE OR STEEL
2	HEX HEAD BOLT	.375-16 UNC-2A X 1.50 LONG	CRS OR MILD STEEL
1	BLOCK	1.00 X 2.00 X 3.00	CRS OR MILD STEEL

DESIGNER		DK	11/12/01	MATERIAL	ALUMINUM OR MILD STEEL
DWG CHK					
DWG APPD					
SCALE		NTS	DWG #98201		SHEET 1 OF 1

TOLERANCES		.XX ± .005
ANGLES		± 1 DEG.
FRACTIONS		± 1/64

UNLESS OTHERWISE SPECIFIED DIMENSIONS ARE IN INCHES INTERPRET DIMENSIONS AND TOLERANCES PER ASME Y14.5M-1994

MACHINING SKILLS LEVEL I

Job Duty 2.1 BENCHMARK

NIMS PROCEDURAL REQUIREMENTS

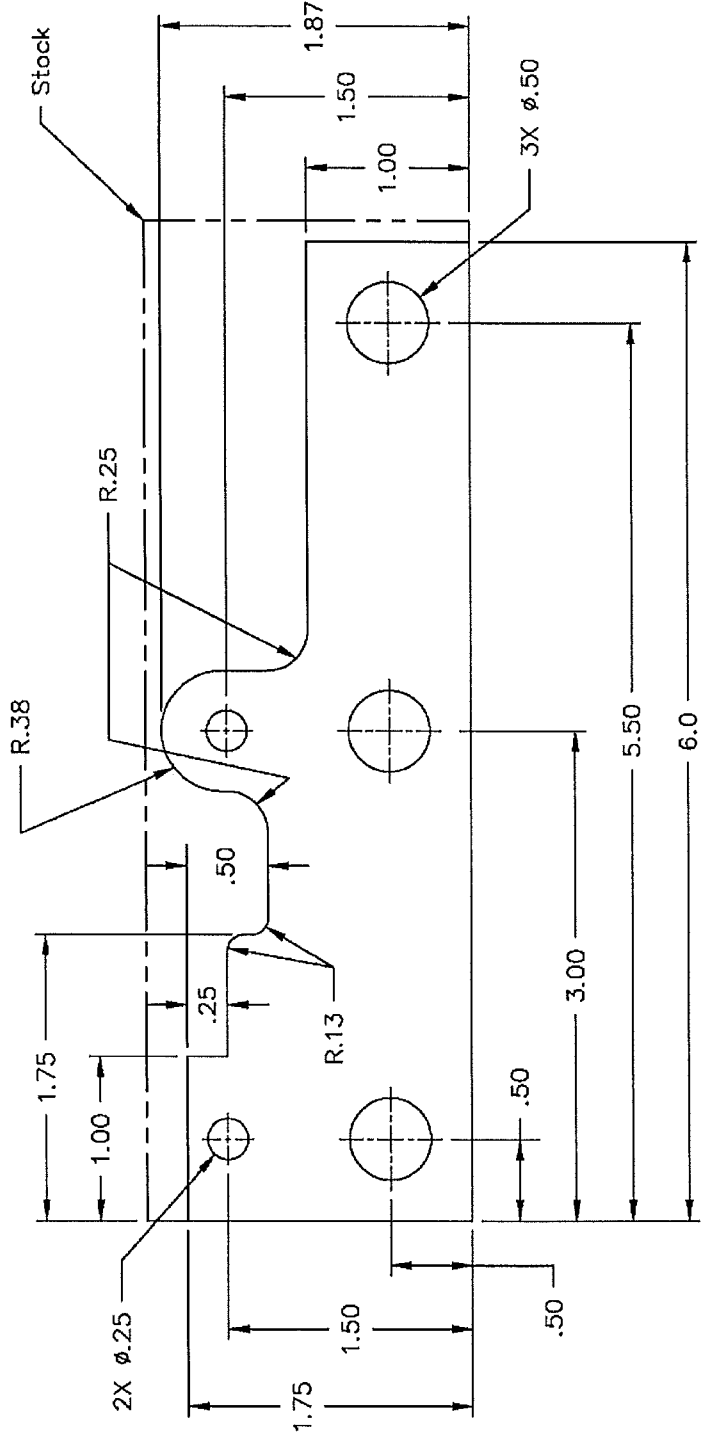
1. PORTABLE HAND DRILL TO BE USED
2. THIS IS A BENCHMARK JOB, EXCEPT FOR PREPARATION OF THE BLOCK, ALL WORK IS TO BE DONE USING HAND TOOLS
3. SUBMIT THIS PRINT AND WORKPIECE ALONG WITH THE PERFORMANCE AFFIDAVIT FOR EVALUATION

"This workforce solution was funded by a grant awarded by the U.S. Department of Labor' Employment and Training Administration. The solution was created by the grantee and does not necessarily reflect the official position of the U. S. Department of Labor. The Department of Labor makes no guarantees, warranties, or assurances of any kind, express or implied, with respect to such information, including any information on linked sites and including, but not limited to, accuracy of the information or its completeness, timeliness, usefulness, adequacy, continued availability, or ownership."




This MoWINS product was created by State Technical College of Missouri and is licensed under a [Creative Commons Attribution 4.0 United States License](http://creativecommons.org/licenses/by/4.0/). To view a copy of this license, visit <http://creativecommons.org/licenses/by/4.0/>

REVISIONS			
REV	DESCRIPTION	DATE	APPROVED
A	UPDATED DRAWING AND TITLE BLOCK	3/7/05	LW



Notes:
BREAK ALL SHARP EDGES

 <p>UNLESS OTHERWISE SPECIFIED DIMENSIONS ARE IN INCHES DECIMAL DIMENSIONS AND TOLERANCES PER ASME Y14.5M-1994</p> <p>TOLERANCES .X ±.03Z .XX ±.015 .XXX ±.005 ANGLES ± 1 DEG. FRACTIONS ± 1/64</p>		<p>MACHINING SKILLS LEVEL I</p>	
<p>Job Duty 2.2 Manual Operation, Layout</p>			
DESIGNER	DK	MATERIAL	COLD ROLL STEEL OR MILD STEEL
DWG CHK			
DWG APPD			
SCALE	FULL	DWG.#98202 I	SHEET 1 OF 1

DO NOT SCALE DRAWING

NIMS PROCEDURAL REQUIREMENTS

1. THIS IS A LAYOUT ONLY. DO NOT CUT PART PROFILE
2. CONSTRUCTION LINES FOR LAYOUT ARE PERMISSIBLE
3. LINES ARE STRUCK ONCE
4. INTERSECTIONS ARE CLEAN AND CLEAR
5. PUNCH MARKS ARE CENTERED ON INTERSECTIONS: ± .015
6. SUBMIT THIS PRINT AND WORKPIECE ALONG WITH THE PERFORMANCE AFFIDAVIT FOR EVALUATION