

## What Is Environmental Science?

The study of environmental science spans the disciplines that relate to the natural environment. Course work covers the importance of monitoring and improving the quality of the environment, the effects of human activity on terrestrial and aquatic systems, and the benefits of developing and using sustainable technologies to maintain and restore these systems.

## About the Program

The college's Environmental Science associate degree program, with its emphasis on basic sciences and mathematics, is a good choice for students who are interested in environmental science or who plan to transfer to complete the requirements for a bachelor of science degree in environmental science. By enrolling in this program, students are able to start their course work at MCC and take advantage of its high quality instruction and more affordable community college tuition and fees. At MCC, environmental science courses may be used to satisfy a student's general education knowledge areas in science.

Students may enroll in the program on a full-time or part-time basis. Most courses at MCC are offered both during daytime and evening hours, and some courses are offered online; however, higher-level courses may be available only during daytime hours.

All students should consult with their Environmental Science program faculty advisor to plan their course of study.



## Career Opportunities

The MCC Environmental Science degree program will prepare students to seek entry-level employment or continue their studies in geosciences, ecology, energy resources and sustainability, natural resources management and environmental biology or chemistry.

One of the benefits of the program's focus on mathematics and sciences is the variety of career paths it provides. Individuals with scientific training will have the background and qualifications for a variety of positions in business; industry; municipal, state and federal government agencies; and education.

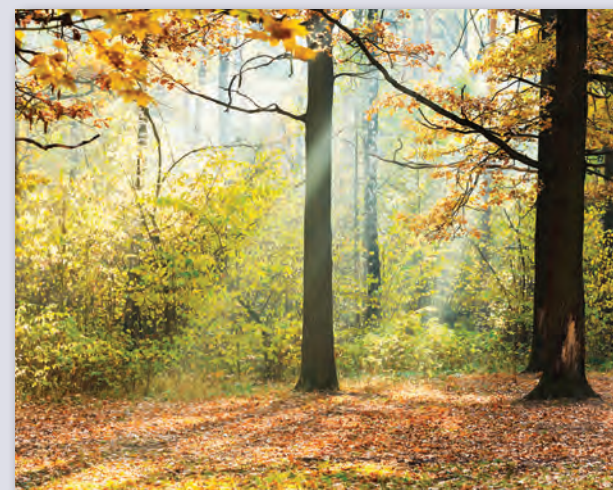
Exciting career opportunities for environmental science professionals include:

- Environmental Analyst
- Environmental Engineer
- Field Geologist
- Forester
- Government Regulator
- Natural Resources Manager
- Pollution Engineer
- Sustainability Officer
- Waste Management Technician
- Wildlife Biologist

## Sources of Additional Information

For more information, please contact:

Ann Hadley  
Program Coordinator  
Professor of Earth and Environmental Sciences  
Phone: 860-512-2706  
Email: [ahadley@manchestercc.edu](mailto:ahadley@manchestercc.edu)  
Website: [www.manchestercc.edu/envsci](http://www.manchestercc.edu/envsci)



## Employment Outlook

The job market for environmental science professionals is projected to grow and remain strong. Employment projections compiled by the CT State Department of Labor and the U.S. Department of Labor predict a 15 percent increase in employment in environmental science and related fields through 2022. This trend is fueled by increased demand for waste regulation and compliance monitoring in response to an increasing awareness of the importance of improving the quality of the environment.



## Why Choose MCC?

- Our tuition is affordable.
- We have state-of-the-art academic facilities and offer plenty of free parking.
- Our small class size means you'll know your professors—and they'll know you.
- Our campus is conveniently located, near I-84 and I-384 in Manchester.
- Our class schedules needn't overlap with your work schedule.
- Our reputation helps you transfer into the very best baccalaureate colleges.
- Our certificate programs prepare you for quick entry into an exciting career.
- Our career and cooperative education services help you get the job you want—both while you're in school and after graduation.
- We are the only community college in the country nationally recognized for academic excellence by the Harry S. Truman Scholarship Foundation.



The Environmental Science program is part of the Connecticut Health & Life Sciences Career Initiative. The Connecticut Health & Life Sciences Career Initiative is 100% funded by a \$12.1 million grant from the U.S. Department of Labor, Employment & Training Administration TAACCT.

Manchester Community College does not discriminate on the basis of race, color, religious creed, age, gender, sexual orientation, gender identity or expression, transgender status, civil union status, national origin, ancestry, marital status, physical, intellectual and learning disabilities, present or past mental disability, veteran status, genetic information or criminal record. The following person has been designated to handle inquiries regarding the non-discrimination policies:

Manchester Community College no discrimina por razones de raza, color, religión, credo, edad, género, orientación sexual, identidad o expresión de género, condición transgénero, el estado de unión civil, origen nacional, ascendencia, estado civil, físico, intelectual y problemas de aprendizaje, discapacidad mental actual o pasada, condición de veterano, información genética o antecedentes penales. La siguiente persona ha sido designada para atender las consultas relativas a las políticas de no discriminación:

Manager of Diversity, Inclusion and Staff Development (AA/EEO, Title IX and Section 504/ADA Compliance), Manchester Community College; Great Path, MS #2; Manchester, CT 06040; Student Services Center, L134c; 860-512-3107.

The college reserves the right to make any necessary changes in the information listed in this publication. January 2015/PR/2.5M



This work is licensed under the Creative Commons Attribution 4.0 International License. To view a copy of this license, visit <http://creativecommons.org/licenses/by/4.0/>.

MANCHESTER  
COMMUNITY  
COLLEGE



MS #17  
Great Path  
P.O. Box 1046  
Manchester, CT  
06045-1046

## Environmental Science Program



## Monitoring and Managing Our Environment



MANCHESTER  
COMMUNITY  
COLLEGE