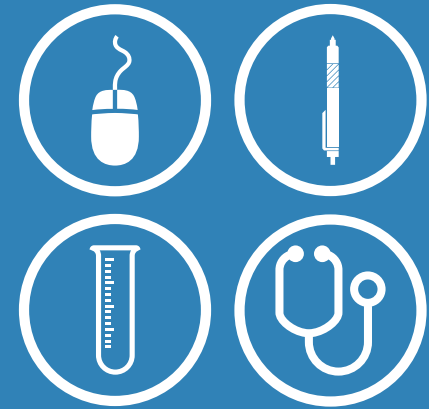


## COLLEGE CREDIT FOR WORK OR LIFE EXPERIENCE

College Credit Fast Track ([ccfasttrack.org](http://ccfasttrack.org)) helps current and prospective students earn college credit at one of Pennsylvania's Community Colleges based on prior work or life experience. Credit can be awarded for:

- Employment
- Training programs
- Military service
- Independent study
- Community service
- Completing free online courses

We help you find the right course to petition for credit, put you in contact with an advisor at your target institution, and assist you with building your e-portfolio and sending it to an assessor for review.



## A REALITY CHECK FOR PRIOR LEARNING

Your prior knowledge must meet certain criteria:

- ✓ Is your prior learning **publicly verifiable**?  
Can it be measured/evaluated?
- ✓ Is your prior experience comparable to **college-level learning**?
- ✓ Does your prior learning have a **subject matter** knowledge base? (College credit will not be awarded for application of a manual skill, for example.)
- ✓ Can your prior learning be **generally applied** to other situations? Does it reflect **basic principles** of the subject area?

**For more information:**  
[ccfasttrack.org](http://ccfasttrack.org)

## NOT ALL LEARNING IS DONE IN THE CLASSROOM

It's your life. Get the credits  
you've earned.



Montgomery County  
Community College

[CCFASTTRACK.ORG](http://CCFASTTRACK.ORG)

## IT'S EASY TO GET THE CREDITS YOU DESERVE

1. **Build your profile** on cfasttrack.org in 6 easy steps.
2. **Choose a community college** in Pennsylvania as your target institution.
3. **Create a petition** requesting prior learning credit for up to five courses. (Not sure which courses? You still can submit a request to an advisor.)
4. **Submit your application** to an advisor, who will determine your eligibility.
5. **Build your e-portfolio** and submit it for review.



## PARTICIPATING COLLEGES

Bucks County Community College  
Butler County Community College  
Community College of Allegheny County  
Community College of Beaver County  
Community College of Philadelphia  
Delaware County Community College  
HACC, Central Pennsylvania's Community College  
Lehigh Carbon Community College  
Luzerne County Community College  
Montgomery County Community College  
Northampton Community College  
Pennsylvania Highlands Community College  
Reading Area Community College  
Westmoreland County Community College



## WHAT YOU NEED TO KNOW ABOUT THE E-PORTFOLIO

Your e-portfolio is critical in determining whether you are eligible to receive college credit. It helps the institution clarify and verify your prior learning. This e-portfolio becomes part of your presentation to the evaluators.

Most e-portfolios require three sections of material:

1. **Demographic information**  
(name, course, degree/program, reason for application)
2. **Personal essay** (2-5 pages)
3. **Supporting documentation**  
(resume, certifications, etc.)



This program is funded in whole or in part by the U.S. Department of Labor-Employment and Training Administration.