

**Casper College  
Health Science Simulation Center  
Architectural Plans for Sim Lab Renovation Project**

The architectural plans for the Health Science Simulation Center at Casper College provide drawings of the renovations that were made convert exiting classroom space to the Simulation Center. This building plan was developed for the Trade Adjustment Assistance Community College and Career Training (TAACCCT) Grant Program Round 2 Grant, [TC-23747-12-60-A-56](#).

This product was funded by a grant awarded by the U.S. Department of Labor's Employment and Training Administration. The product was created by the grantee and does not necessarily reflect the official position of the U.S. Department of Labor. The Department of Labor makes no guarantees, warranties, or assurances of any kind, express or implied, with respect to such information, including any information on linked sites and including, but not limited to, accuracy of the information or its completeness, timeliness, usefulness, adequacy, continued availability, or ownership.



Architectural Plans for the Health Science Simulation Center by Casper College is licensed under a Creative Commons Attribution 3.0 Unported License.

SIMULATION LAB RENOVATION PROJECT:

HEALTH SCIENCE



CASPER COLLEGE

CASPER, WYOMING

SYMBOLS

North arrow pointing up, labeled NORTH.

Structural grid symbols: A horizontal line with 'A' at the right end and a vertical line with '1' at the bottom end. Labeled STRUCTURAL GRID SYMBOLS.

Building sections: A triangle with '2' inside, a horizontal line, and '6.1' below it. Labeled BUILDING SECTIONS.

Wall sections: A triangle with '7.1' inside, a horizontal line, and '7.1' below it. Labeled WALL SECTIONS.

Plan details: A circle with '4.1' inside. Labeled PLAN DETAILS.

Elevation symbol: A circle with a cross inside. Labeled ELEVATION SYMBOL.

Room designation: A rectangle with '101A' inside. Labeled ROOM DESIGNATION.

Window designation: A rectangle with '101' inside. Labeled WINDOW DESIGNATION.

Door number: A circle with '101A' inside. Labeled DOOR NUMBER.

FLOOR PLAN: A rectangle with '1' inside, a horizontal line, and '1/8" = 1'-0"' below it. Labeled FLOOR PLAN.

Revision number/designation: A cloud shape with '1' inside. Labeled REVISION NUMBER /DESIGNATION.

Key note designation: A triangle with '1' inside. Labeled KEY NOTE DESIGNATION.

Match line designation: A line with 'A' and '3.1' at the ends. Labeled MATCH LINE DESIGNATION.

Marker board: A rectangle with 'MB' inside. Labeled (MB) MARKER BOARD.

Chalk board: A rectangle with 'CB' inside. Labeled (CB) CHALK BOARD.

Talk board: A rectangle with 'TB' inside. Labeled (TB) TALK BOARD.

Geotechnical test bore hole: A circle with a cross inside. Labeled GEOTECHNICAL TEST BORE HOLE.

Interior elevation marker: A circle with '9.1' inside. Labeled INTERIOR ELEVATION MARKER.

MATERIAL INDICATIONS

Earth/grade: A rectangle with diagonal lines.

Gravel/aggregate: A rectangle with a stippled pattern.

Sand/mortar/plaster: A rectangle with a horizontal line pattern.

Concrete: A rectangle with a vertical line pattern.

Brick: A rectangle with a brick pattern.

Concrete block (C.M.U.): A rectangle with a cross-hatch pattern.

Stone: A rectangle with a stone pattern.

Metal: A rectangle with a diagonal line pattern.

Wood framing (through member): A rectangle with a diagonal line pattern.

Wood framing (interrupted member): A rectangle with a diagonal line pattern.

Plywood: A rectangle with a horizontal line pattern.

Asphalt: A rectangle with a horizontal line pattern.

Steel stud: A rectangle with a horizontal line pattern.

Wood stud: A rectangle with a horizontal line pattern.

Batt insulation: A rectangle with a diagonal line pattern.

Rigid insulation: A rectangle with a diagonal line pattern.

Acoustic tile: A rectangle with a diagonal line pattern.

Gypsum board: A rectangle with a diagonal line pattern.

Gypsum sheathing: A rectangle with a diagonal line pattern.

Spray-on acoustic over gypsum board: A rectangle with a diagonal line pattern.

BUILDING CODE DATA

GENERAL INFORMATION:

OWNER: CASPER COLLEGE

PROJECT ADDRESS: HEALTH SCIENCE

APPLICABLE CODES AND REGULATIONS:

CODE OR REGULATION	EFFECTIVE DATE	REQUIRING AUTHORITY
INTERNATIONAL BUILDING CODE	2012	BUILDING DEPARTMENT
INTERNATIONAL EXISTING BUILDING CODE	2012	BUILDING DEPARTMENT
INTERNATIONAL MECHANICAL CODE	2012	BUILDING DEPARTMENT
INTERNATIONAL PLUMBING CODE	2012	BUILDING DEPARTMENT
ICC ELECTRICAL CODE	2012	BUILDING DEPARTMENT
INTERNATIONAL FIRE CODE	2012	FIRE DEPARTMENT
ANSI 117.1	2009	CC/ANSI
CASPER ZONING ORDINANCE		PLANNING DEPARTMENT

CONSTRUCTION CLASSIFICATION COMPLIANCE:

USE:	CLASSROOMS
OCCUPANCY GROUP:	B
CONSTRUCTION TYPE:	III-B
ALLOWABLE STORIES/HEIGHTS:	FOUR STORY
ACTUAL STORIES/HEIGHT:	TWO STORY/20'-10"
BASIC ALLOWABLE AREA:	19,000 SQUARE FEET
SPRINKLER INCREASE:	NONE
ACTUAL SQUARE FOOTAGE - LOWER FLOOR:	15,743 SQUARE FEET
ACTUAL SQUARE FOOTAGE - UPPER FLOOR:	12,660 SQUARE FEET
TOTAL:	28,403 SQUARE FEET
AREA TO BE RENOVATED:	1,625 SQUARE FEET

EXITS AND EGRESS (REMODELED ARE ONLY):

AREA	OCC. LOAD FACTOR	OCC. LOAD	# REQ'D EXITS
CLASSROOM SUITE A			
MEDICATION AREA	233 S.F.	20 NET	12
LAB #1	173 S.F.	20 NET	9
LAB #2	185 S.F.	20 NET	9
CONTROL ROOM #1	136 S.F.	100 GROSS	2
STORAGE	63 S.F.	300 GROSS	1
TOTAL OCCUPANT LOAD: CLASSROOM SUITE A			33 OCCUPANTS
EGRESS WIDTH REQUIRED: (WITHOUT FIRE SPRINKLER)			33 OCCUPANTS x .20 INCHES = 6.6 INCHES
ACTUAL EGRESS WIDTH:			36 INCHES = 3'-0"
CLASSROOM SUITE B			
GURNEY VESTIBULE	190 S.F.	20 NET	10
LAB #3	154 S.F.	20 NET	8
LAB #4	221 S.F.	20 NET	11
CONTROL ROOM #2	127 S.F.	100 GROSS	2
TOTAL OCCUPANT LOAD: CLASSROOM SUITE B			32 OCCUPANTS
EGRESS WIDTH REQUIRED: (WITHOUT FIRE SPRINKLER)			31 OCCUPANTS x .20 INCHES = 6.2 INCHES
ACTUAL EGRESS WIDTH:			48 INCHES = 4'-0"

PROJECT TEAM

OWNER: CASPER COLLEGE  
125 COLLEGE DRIVE  
CASPER, WYOMING 82601  
MIKE SAWYER - CONTACT  
(307) 268-2492  
(307) 268-2204 Fax

ARCHITECT: AMUNDSEN ASSOCIATES  
212 E. SECOND STREET  
CASPER, WYOMING 82601  
STEVE ADAMS - PROJECT MANAGER  
(307) 234-9999  
(307) 234-4342 Fax

MECHANICAL/ELECTRICAL ENGINEER: ENGINEERING DESIGN ASSOCIATES  
1067 CY AVE, SUITE 303  
CASPER, WYOMING 82601  
ATTN: GINNIE SCHOFIELD - MECHANICAL  
ATTN: KEVIN SCHILLING, P.E. - ELECTRICAL  
(307) 266-5033  
(307) 234-3805-FAX

DRAWING INDEX

COVER SHEET, GENERAL INFORMATION, AND INDEX

ARCHITECTURAL - AMUNDSEN ASSOCIATES

3.00 DEMOLITION FLOOR PLAN AND DEMOLITION CEILING PLAN  
3.10 REVISED FLOOR PLAN, NOTES AND WALL TYPES  
3.20 REVISED REFLECTED CEILING PLAN AND NOTES  
3.30 PARTIAL UPPER FLOOR PLAN AND NOTES  
3.40 DOOR SCHEDULE, DOOR FRAME ELEVATIONS, DOOR AND WINDOW TYPES, GLAZING TYPES, DOOR HARDWARE SCHEDULE AND PARTIAL BUILDING SECTIONS  
9.10 FINISH FLOOR PLAN, PROPOSED FURNITURE PLAN, ROOM FINISH LEGEND & ACCESSORY MOUNTING HEIGHTS  
9.20 INTERIOR ELEVATIONS, CASEWORK SECTIONS & NOTES

MECHANICAL/PLUMBING - EDA

15.10 MECHANICAL DEMOLITION PLAN  
15.20 PIPING FLOOR PLAN  
15.30 NEW MECHANICAL FLOOR PLAN  
15.40 MECHANICAL SPECIFICATIONS, SCHEDULES, NOTES AND DETAILS

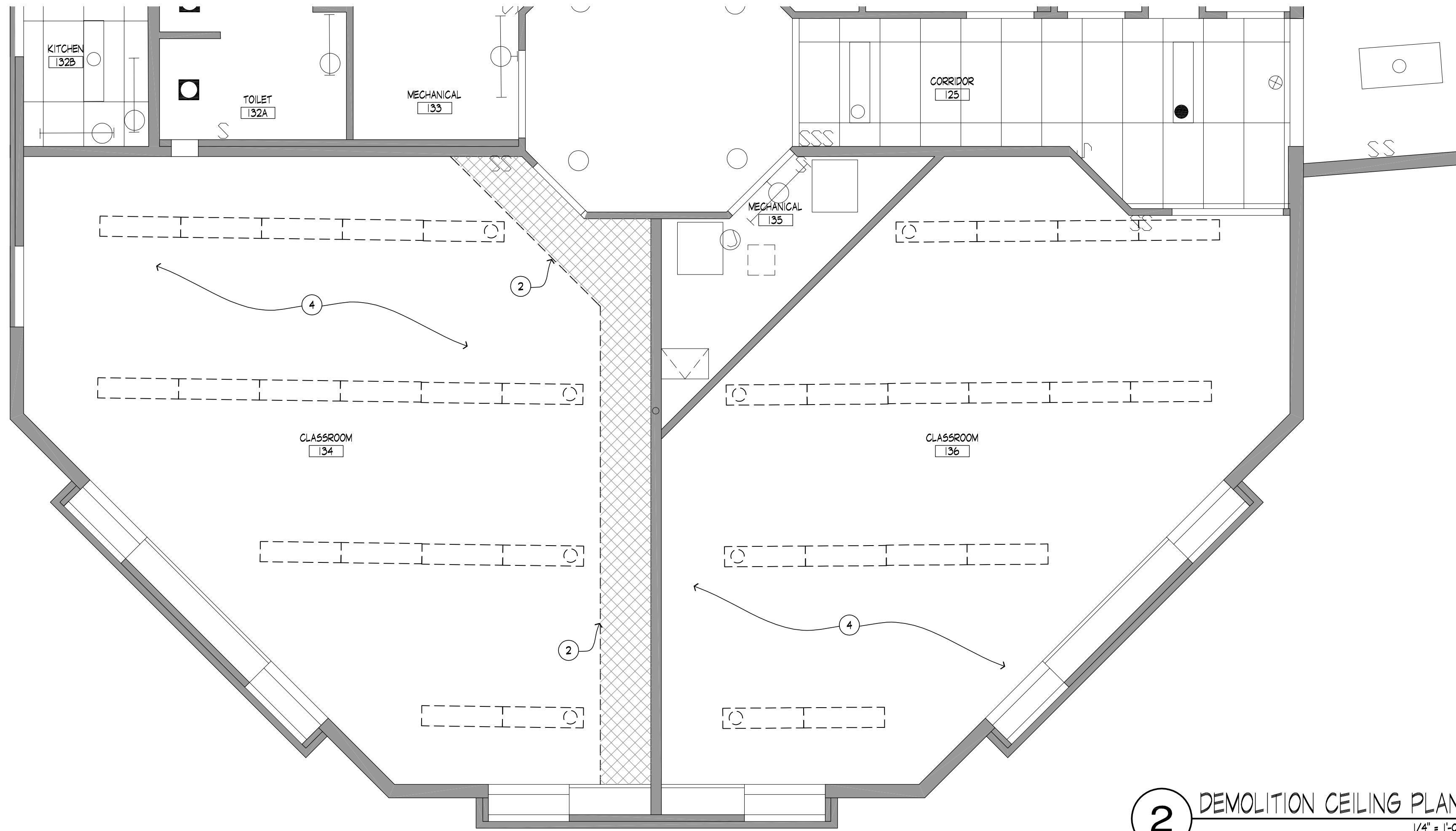
ELECTRICAL - EDA

16.10 ELECTRICAL DEMOLITION PLANS  
16.20 REVISED POWER PLAN  
16.30 POWER PLAN

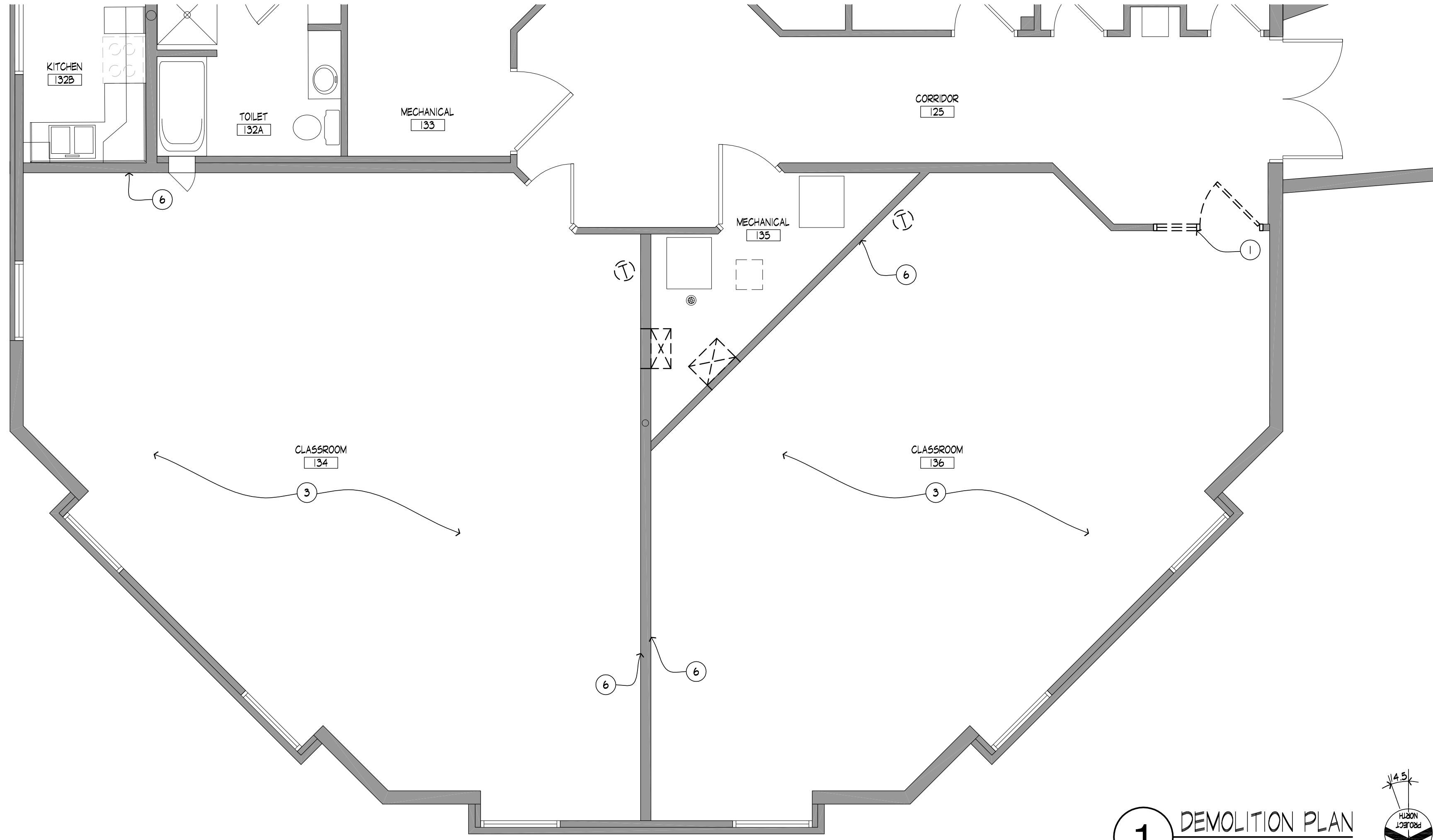
PROJECT SITE: A map showing the location of the project site within the campus.

VICINITY MAP: A map showing the location of the project site within the campus.

JOB #	SET #
12196	



2 DEMOLITION CEILING PLAN  
1/4" = 1'-0"



1 DEMOLITION PLAN  
1/4" = 1'-0"

### DEMOLITION GENERAL NOTES:

- DASHED LINES INDICATE BUILDING MATERIALS TO BE REMOVED IN THEIR ENTIRETY, U.N.O. REFER TO MECHANICAL & ELECTRICAL ITEMS TO REMAIN.
- THE CONTRACTOR IS RESPONSIBLE FOR KNOWING AND COMPLYING WITH REGULATORY REQUIREMENTS, INCLUDING BUT NOT LIMITED TO FEDERAL, STATE AND LOCAL REQUIREMENTS, PERTAINING TO LEGAL DISPOSAL OF ALL CONSTRUCTION AND DEMOLITION WASTE MATERIALS.
  - CONTRACTOR TO COORDINATE ALL DEMOLITION AND CONSTRUCTION PHASES OF PROPOSED WORK WITH OWNER. COORDINATE IF ANY ITEMS ARE TO BE TURNED OVER TO THE OWNER.
  - DO NOT INTERRUPT UTILITY SERVICES TO ADJACENT AREAS WITHOUT ADVANCED NOTIFICATION. COORDINATE ALL WORK WITH THE OWNER. CONTRACTOR TO COORDINATE ALL DEMOLITION WORK WITH ALL SUB CONTRACTORS FOR DISCONNECTING OF ELECTRICAL, MECHANICAL AND FIRE ALARM TO BE REMOVED OR RELOCATED.
  - DO NOT BLOCK ACCESS OR OTHERWISE OBSTRUCT ANY PUBLIC WAY WITHOUT THE PERMISSION OF THE AUTHORITY HAVING JURISDICTION.
  - ALL REMOVED ITEMS EXCEPT FOR THOSE NOTED TO BE REUSED OR TO BE RETURNED TO THE OWNER SHALL BECOME THE PROPERTY OF THE CONTRACTOR, AND SHALL BE REMOVED FROM THE JOB SITE.
  - ALL DEMOLITION DEBRIS TO BE DISPOSED OF OFF SITE IN LEGAL WASTE FACILITY BY THE CONTRACTOR. UTILIZE COVERED TRANSPORTATION CARTS THROUGH THE BUILDING.
  - EXERCISE CAUTION NOT TO DAMAGE EXISTING FINISHES & UNDERLYING SURFACES. DURING DEMOLITION WORK CONTRACTOR IS RESPONSIBLE FOR ANY DAMAGE.
  - TERMINATE ALL ELECTRICAL OUTLET, PANEL & SERVICE AS REQUIRED, PRIOR TO DEMOLITION.
  - REFER TO MECHANICAL, ELECTRICAL, AND PLUMBING DRAWINGS FOR ITEMS TO REMAIN OR FOR ADDITIONAL DEMOLITION ITEMS NOT SHOWN ON THESE DRAWINGS.

### LEGEND:

- INDICATES EXISTING WALLS TO REMAIN
- EXISTING 2X4 CEILING GRID TO REMAIN
- GYPSUM BOARD SOFFIT TO BE REMOVED
- EXISTING GYPSUM BOARD CEILING WITH GLUE ON TILE TO REMAIN
- FLORESCENT LIGHT FIXTURE TO BE REMOVED. SALVAGE FOR RE-USE.
- FLORESCENT LIGHT FIXTURE TO BE REMOVED. SALVAGE FOR RE-USE.
- EXISTING EXIT LIGHT TO REMAIN
- EXISTING FLUORESCENT LIGHT FIXTURE TO REMAIN
- EXISTING FLUORESCENT LIGHT FIXTURE TO REMAIN

### DEMOLITION KEY NOTES:

- REMOVE EXISTING DOOR, FRAME IN ITS ENTIRETY.
- REMOVE EXISTING GYPSUM BOARD, STEEL STUD FRAMED SOFFIT IN ITS ENTIRETY.
- REMOVE EXISTING CARPET & RUBBER BASE. CLEAN OFF ALL ADHESIVE AS REQUIRED FOR NEW FLOOR FINISHES. PATCH EXISTING CONCRETE AS REQUIRED.
- REMOVE EXISTING GLUE-ON ACOUSTICAL CEILING TILE. PLASTER AND LATH TO REMAIN.
- REMOVE PORTIONS OF THE EXISTING GYPSUM BOARD/PLASTER AND LATH AS REQUIRED FOR THE PIPING REQUIRE FOR THE NEW HEADWALLS. COORDINATE EXACT LOCATIONS WITH HEADWALL SUBMITTALS AND MECHANICAL DRAWINGS.

AMUNDSEN ASSOCIATES, LLC  
ARCHITECTURE  
PLANNING  
INTERIOR DESIGN

212 E. Second Street  
307.234.9999

Casper, Wyoming 82601  
amundsen@aol.com  
fax: 307.234.4542

RENOVATION FOR:  
**Casper College**  
**HEALTH SCIENCE**  
SIMULATION LAB RENOVATION  
CASPER, WYOMING

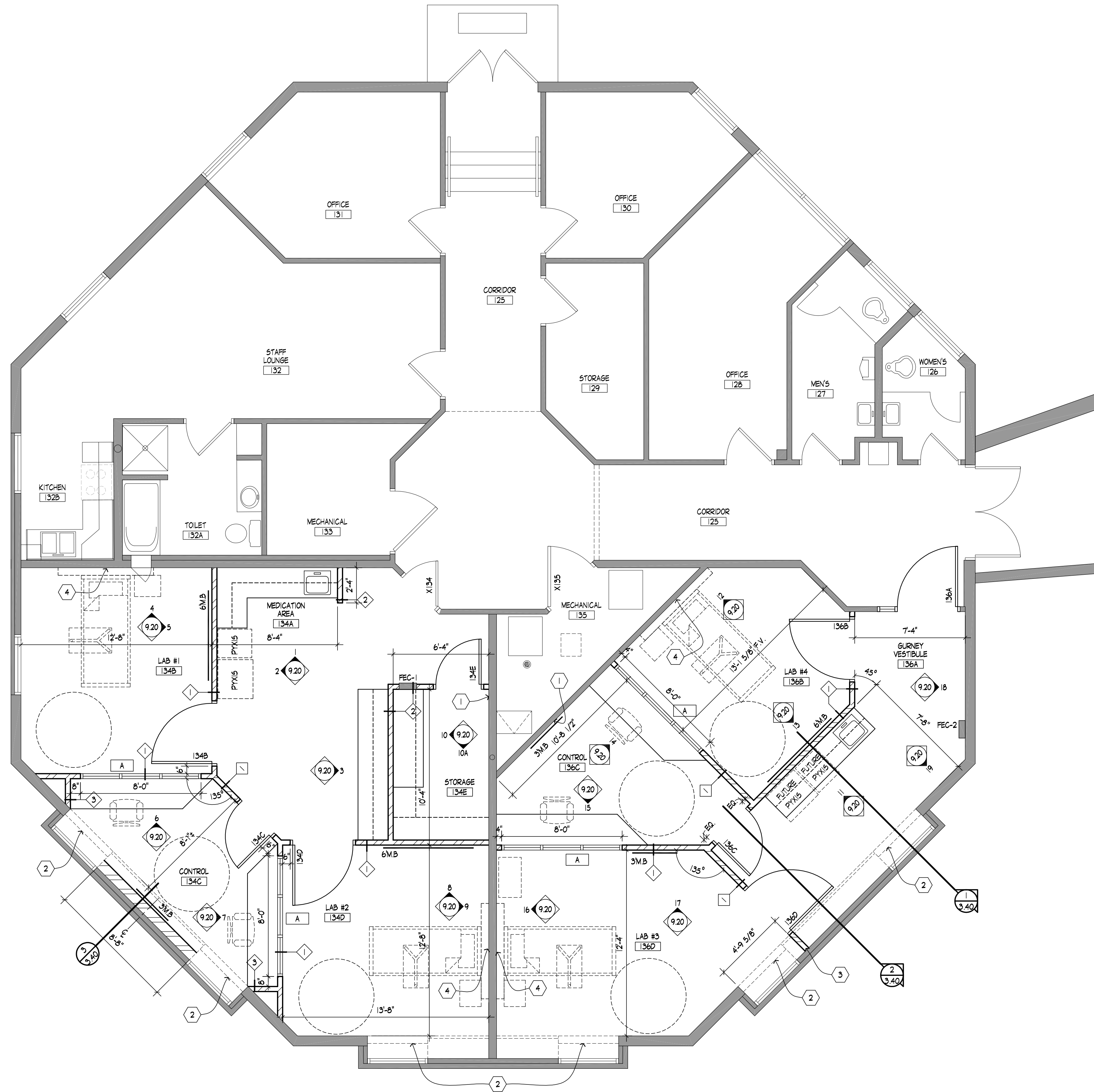
JOB NUMBER:  
12196

DATE:  
MARCH 21, 2013

DRAWN BY:  
SRA

SHEET TITLE:  
DEMOLITION FLOOR PLAN  
DEMOLITION CEILING PLAN





**1** REVISED FIRST FLOOR PLAN  
3.10 1/4" = 1'-0"

**GENERAL NOTES:**

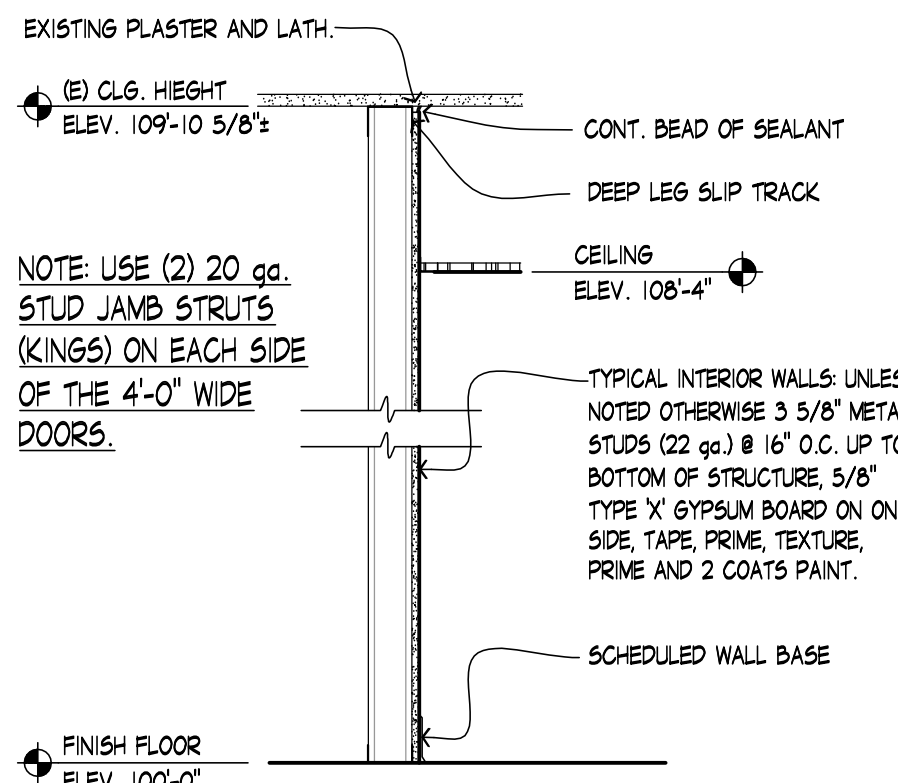
- ALL DETAILS OF CONSTRUCTION SHALL CONFORM WITH THE LATEST EDITION OF THE INTERNATIONAL BUILDING CODE AND ALL LOCAL PRESIDING BUILDING CODES AND LEGAL REQUIREMENTS.
- THE CONTRACTOR SHALL FULLY ACQUAINT HIMSELF WITH THE CONDITIONS AND REQUIREMENTS OF THE DRAWINGS INCLUDING OTHER PARTS OF THE PROPOSED CONTRACT DOCUMENTS AND FULLY UNDERSTAND THE CONDITIONS, DIFFICULTIES AND RESTRICTIONS COMPLETELY BEFORE EXECUTING THE WORK. IT IS UNDERSTOOD THAT OMISSIONS FROM THE BID DUE TO FAILURE OF THE CONTRACTOR TO FULLY ACQUAINT HIMSELF WITH THE CONSTRUCTION DOCUMENTS WILL NOT ENTITLE HIM TO ADDITIONAL CONSIDERATION AND/OR COMPENSATION.
- SHOULD THE CONTRACTOR FIND DISCREPANCIES IN, OR OMISSIONS FROM, THE CONSTRUCTION DOCUMENTS, OR BE IN DOUBT AS TO THE MEANING AND INTENTION OF ANY ITEM OR REQUIREMENT, HE SHALL NOTIFY THE ARCHITECT AT ONCE FOR CLARIFICATION BEFORE PROCEEDING WITH THAT PORTION OF THE WORK.
- CONTRACTOR IS TO FIELD VERIFY EXISTING UTILITIES, DIMENSIONS & EXISTING CONDITIONS.
- REMOVE DEBRIS FROM SITE IMMEDIATELY AND DISPOSE OF LEGALLY. THE BUILDING GROUNDS SHALL REMAIN CLEAN AND FREE OF DEBRIS AT ALL TIMES.
- THE CONTRACTOR SHALL MAKE EVERY EFFORT TO PROTECT THE BUILDING AND ITS SYSTEMS FROM DAMAGE. WHEN NECESSARY, PROVIDE PROTECTIVE COVERINGS FOR SURFACES THAT ARE SUBJECT TO DAMAGE OF ANY TYPE. DAMAGE CAUSED BY THE CONTRACTOR, THEIR SUBCONTRACTORS, VENDORS, MANUFACTURERS, ETC. SHALL BE REPAIRED IMMEDIATELY AFTER RECEIVING NOTICE. FAILURE TO DO SO COULD RESULT IN A CHARGE TO THE CONTRACTOR WITH WORK TO BE COMPLETED BY OTHERS.
- COORDINATE WITH THE OWNER BEFORE BEGINNING ANY WORK THAT COULD AFFECT THE BUILDING'S FIRE ALARM.
- NO SPACE OTHER THAN THE CONSTRUCTION SITE SHALL BE PROVIDED FOR STORAGE, STAGING, FINISHING OR FOR AN OFFICE UNLESS COORDINATED WITH THE OWNER. STAGING AREAS TO BE DETERMINED AT THE PRE-CONSTRUCTION MEETING.
- NO DUMPING IS ALLOWED IN RESTROOM SINKS, WATER CLOSETS, OR URINALS. USE SLOP SINKS LOCATED ELSEWHERE IN THE BUILDING'S JANITOR CLOSETS, AS INDICATED BY OWNER.
- THESE DRAWINGS REPRESENT VISUAL DESIGN INTENT AS EXPRESSED BY THE ARCHITECT. THEY ARE IN NO WAY MEANT TO DIRECT THE CONTRACTOR IN MATTERS RELATING TO STRUCTURAL PERFORMANCE, FRAMING, SUPPORTS, MANUFACTURER'S INSTRUCTIONS, MILLWORK CONSTRUCTION, MECHANICAL/ELECTRICAL/HVAC ETC. THE CONTRACTOR SHALL BE RESPONSIBLE FOR THE DESIGN, ADEQUACY AND SAFETY OF ERECTION BRACING, SHORING AND TEMPORARY SUPPORTS, ETC. THE CONTRACTOR IS RESPONSIBLE FOR THE STABILITY OF THE STRUCTURE PRIOR TO THE STRUCTURAL ELEMENTS AND FINISH MATERIALS.
- UNLESS NOTED OTHERWISE, THE CONTRACTOR SHALL BE RESPONSIBLE FOR FURNISHING AND INSTALLING ALL MATERIALS, EQUIPMENT AND LABOR NECESSARY FOR A COMPLETE INSTALLATION.
- CONTRACTOR MAY, WITH OWNER/ARCHITECT APPROVAL REMOVE AND REPLACE ADDITIONAL WALLS AND UTILITIES AS NEEDED TO COMPLETE THE WORK IN A TIMELY FASHION. THIS WORK SHALL BE INCLUDED IN THE ORIGINAL BID AMOUNT.
- IN STEEL STUD CONSTRUCTED WALLS AND OVERHEAD CONSTRUCTIONS AS NECESSARY, PROVIDE 2x WOOD BLOCKING FOR THE INSTALLATION OF ALL SURFACE MOUNTED, SEMI RECESSED AND RECESSED EQUIPMENT, HARDWARE, ACCESSORIES AND OTHER PRODUCTS SPECIFIED FOR INSTALLATION IN THE BUILDING. THESE ITEMS INCLUDE, BUT ARE NOT LIMITED TO TOILET PARTITIONS, TOILET ACCESSORIES, GRAB BARS, DOOR AND WINDOW FRAMES AS DETAILED, DOOR HARDWARE (SPECIFICALLY DOOR STOPS), CABINETS, CASEWORK, WALL OFFICE FURNITURE, SIGNAGE, PLACES, FIRE EXTINGUISHER CABINETS AND BRACKETS, LOCKERS AND PEN/PENCIL DISPENSER ETC. THE CONTRACTOR IS SOLELY RESPONSIBLE FOR COORDINATING AND INSURING THE PLACEMENT OF REQUIRED SUPPORT BLOCKING AND SHALL CONFIRM LOCATIONS HEIGHTS AND AMOUNTS OF BLOCKING REQUIRED FOR THE INSTALLATION OF EACH SPECIFIED PRODUCT AND ALSO BE RESPONSIBLE TO COORDINATE LOCATIONS OF WALL MOUNTED OFFICE FURNITURE, SIGNAGE, PLACES AND MISCELLANEOUS WALL ITEMS WITH THE OWNER. THE USE OF HOLLOW WALL ANCHORS TO SUPPORT AND / OR SECURE THESE ITEMS IS NOT ACCEPTABLE AND WILL BE REJECTED.
- ALL WALL DIMENSIONS ARE FROM EXISTING FACE OF GYPSUM BOARD OR PLASTER TO FACE OF NEW STUD WALL UNLESS NOTED OTHERWISE. CONTRACTOR SHALL VERIFY CLEARANCES AND TOLERANCES REQUIRED BY WINDOW AND DOOR MANUFACTURERS PRIOR TO ORDERING UNITS.
- PROVIDE MATERIAL AND SITUATION APPROPRIATE TRANSITION STRIPS AT ALL FLOOR FINISH MATERIAL TRANSITIONS.
- ALL INTERIOR FINISHES - PLANS, LINES AND CORNERS MUST BE NEAT AND CLEAN. SIMILAR MATERIALS ABUTTING EACH OTHER SHALL BE FLUSH ALIGNED UNLESS NOTED OR DETAILED OTHERWISE.
- ALL MATERIAL EDGES AND PRODUCT INSTALLATIONS SHALL BE SHARP AND TRUE, PLUMB AND LEVEL UNLESS NOTED OTHERWISE.
- PROVIDE MATERIALS AND PRODUCTS FOR ANY INDIVIDUAL SYSTEM FROM THE SAME MANUFACTURER. INSTALL MATERIALS AND PRODUCTS PER MANUFACTURER'S RECOMMENDATIONS AND INDUSTRY STANDARD PUBLICATIONS.
- SEE SHEET 9.10 FOR CORNER GUARD LOCATIONS.
- F.E.C. DENOTES FIRE EXTINGUISHER CABINET AND FIRE EXTINGUISHER (REFER TO SHEET 9.10 FOR TYPE, RECESSED, SEMI-RECESSED, OR SURFACE MOUNTED).

**KEY NOTES:**

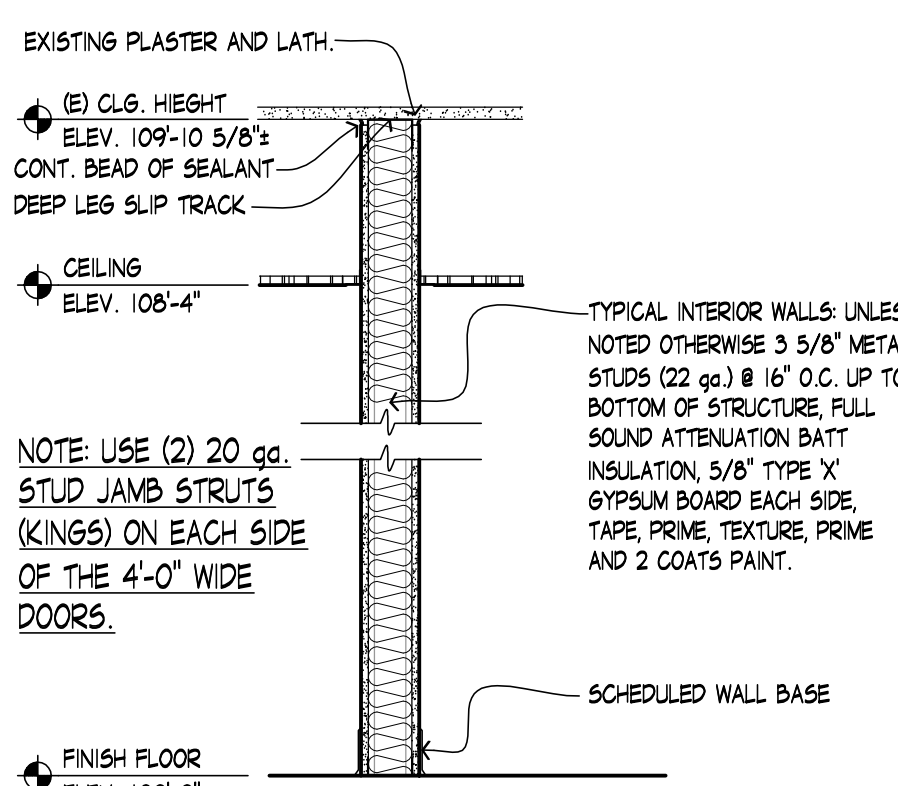
- INFILL EXISTING RETURN GRILLE OPENING WITH METAL FRAMING AND GYPSUM BOARD, PRIME, TEXTURE, PRIME & PAINT.
- NEW BLINDS AND TRACK TO BE PROVIDED BY OWNER.
- CONFIGURE NEW STUD FRAMING AND GYPSUM BOARD AROUND EXISTING FINN TUBE RADIANT HEAT PANEL. CAULK GAPS WITH ACOUSTICAL SEALANT. FILL GAP UNDER CABINET WITH SOUND BATT INSULATION PRIOR TO INSTALLATION OF GYPSUM BOARD.
- PATCH AND REPAIR EXISTING GYPSUM BOARD/PLASTER AND LATH AS REQUIRED PRIOR TO HEADWALL INSTALLATION.

**LEGEND:**

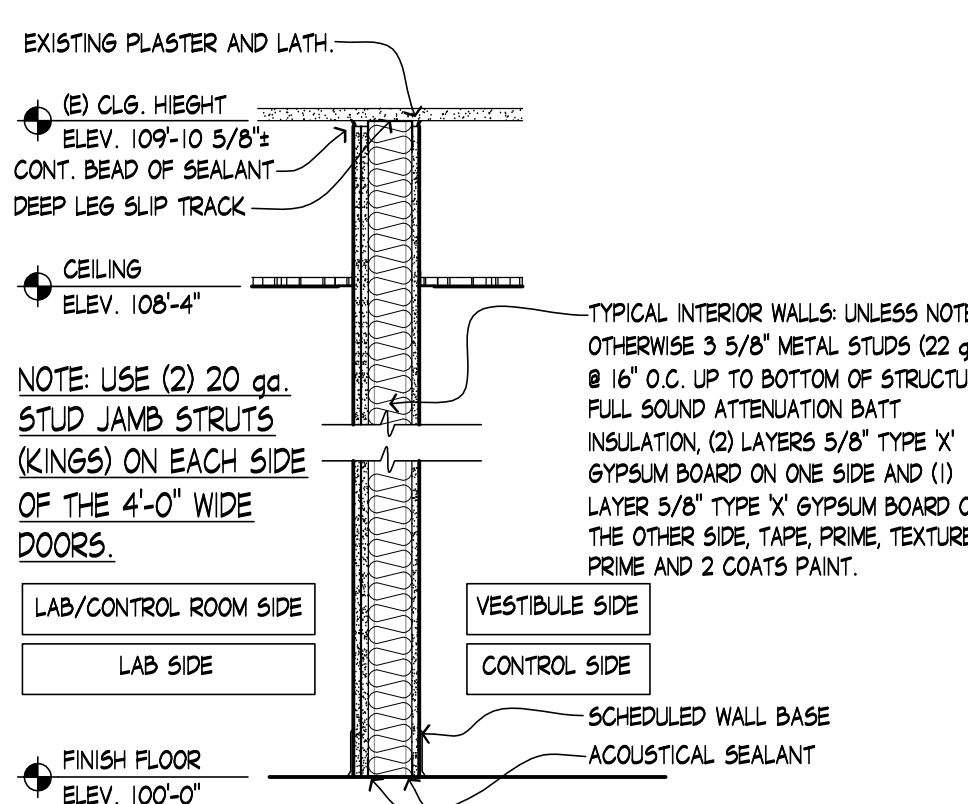
MB INDICATES MARKER BOARD; BOARD SIZE VARIES



**WALL TYPE 3**  
3/4" = 1'-0"



**WALL TYPE 2**  
3/4" = 1'-0"

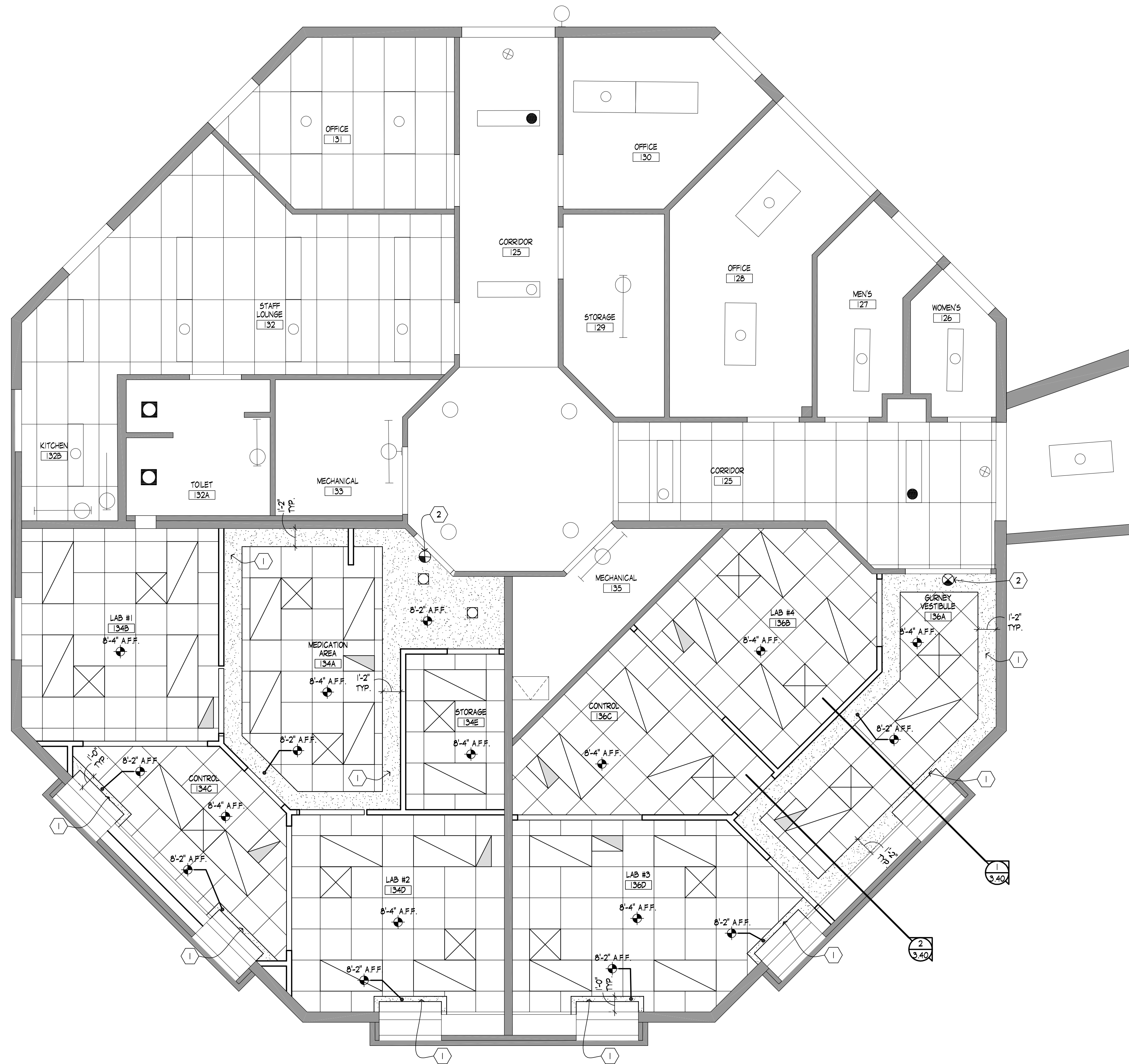


**WALL TYPE 1**  
3/4" = 1'-0"

AMUNDSEN ASSOCIATES, LLC  
ARCHITECTURE  
PLANNING  
INTERIOR DESIGN  
Casper, Wyoming 82601  
307.234.4542  
amundsen@aol.com

RENOVATION FOR:  
**Casper College**  
**HEALTH SCIENCE**  
**SIMULATION LAB RENOVATION**  
CASPER, WYOMING

JOB NUMBER:  
12196  
DATE:  
MARCH 21, 2013  
DRAWN BY:  
SRA, AMP  
SHEET TITLE:  
REVISED FLOOR PLAN, NOTES,  
WALL TYPES



### LEGEND:

- 2x2 SUSPENDED ACOUSTICAL CEILING TILE  
ARMSTRONG: - "FISURED" #705 ANGLED TEGULAR, 2X2X5/8"  
WITH PRELUDE XL SUSPENSION SYSTEM
- EXISTING CEILING GRID AND TILE TO REMAIN
- NEW GYPSUM BOARD CEILING
- EXISTING CEILING TO REMAIN
- MECHANICAL SUPPLY DIFFUSER
- MECHANICAL RETURN AIR GRILL
- RECESSED LIGHT
- RECESSED 2X4 FLUORESCENT LIGHT FIXTURE
- RECESSED 2X2 FLUORESCENT LIGHT FIXTURE
- SURFACE MOUNT 1X4 FLUORESCENT LIGHT FIXTURE
- SURFACE MOUNT STRIP FLUORESCENT LIGHT FIXTURE
- SURFACE MOUNT 2X2 FLUORESCENT LIGHT FIXTURE
- EXISTING EXIT LIGHT TO REMAIN
- EXISTING FLUORESCENT LIGHT FIXTURE TO REMAIN
- EXISTING FLUORESCENT LIGHT FIXTURE TO REMAIN
- EXISTING SURFACE MOUNT LIGHT FIXTURE TO REMAIN
- EXISTING INCANDESCENT TO REMAIN
- EXISTING RECESSED LIGHT FIXTURE TO REMAIN

### CEILING NOTES:

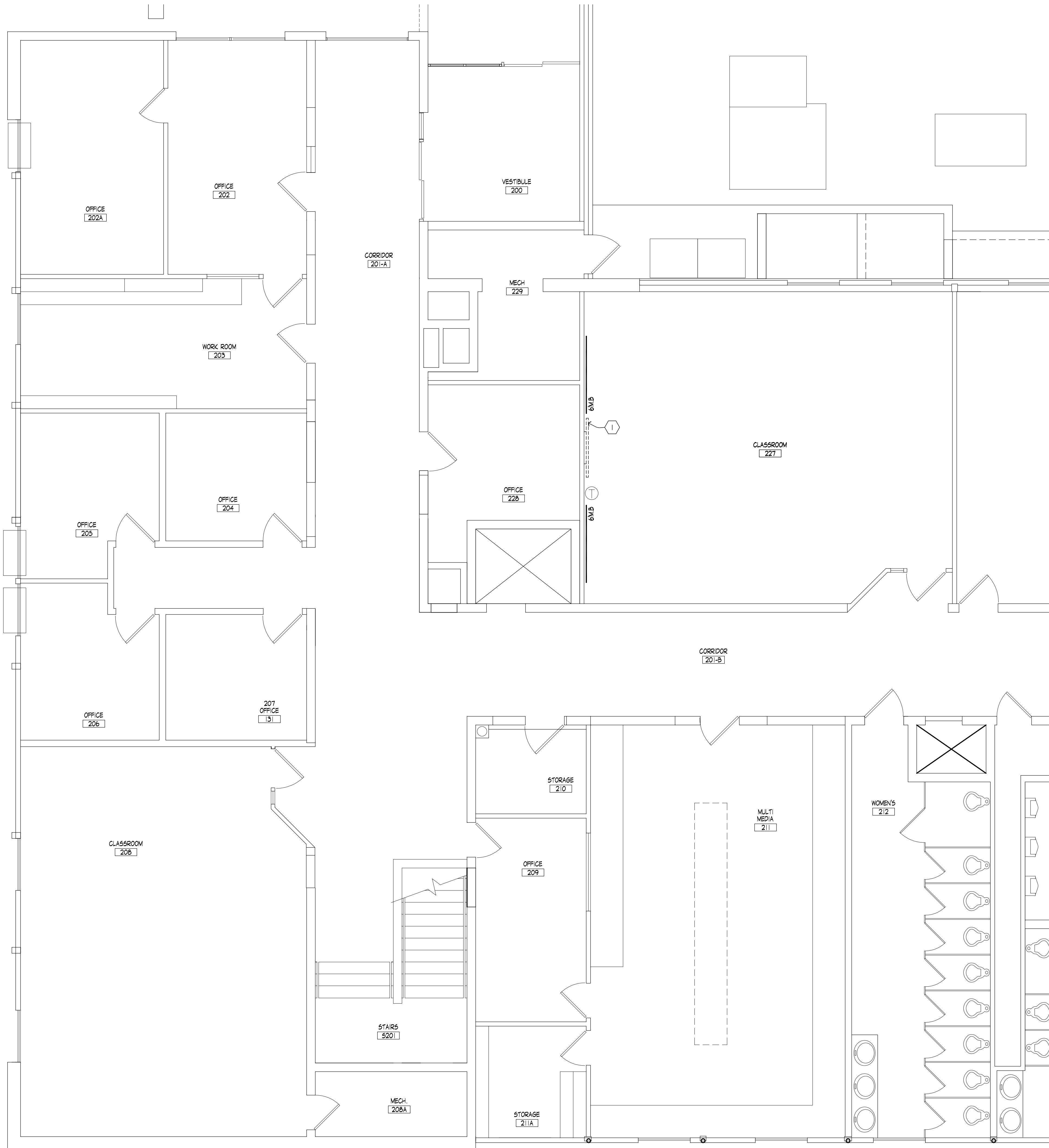
1. CEILING HEIGHT AS INDICATED ON THE REFLECTED CEILING PLAN
2. COORDINATE ALL FRAMING WITH ELECTRICAL, MECHANICAL & PLUMBING.
3. PRIOR TO INSTALLATION OF THE CEILING SYSTEM, ALL MECHANICAL, ELECTRICAL, FIRE PROTECTION AND CEILING SUB-CONTRACTORS SHALL COORDINATE THEIR WORK WITH THE REFLECTED CEILING PLAN, MECHANICAL AND ELECTRICAL DRAWINGS PROVIDED WITHIN THESE DOCUMENTS. IF ANY CONFLICTS OCCUR COORDINATE RESOLUTION WITH ARCHITECT
4. ALL CEILING GRID PENETRATIONS TO BE IN CENTER OF PANEL UNLESS SHOWN OTHERWISE.
5. REMOVE & RELOCATE EXISTING LIGHT FIXTURE AS REQUIRED, REPAIR CEILING GRID AS NECESSARY.
6. CEILING TILE TO BE 'ARMSTRONG' #705.
7. ALL PENETRATIONS IN THE EXISTING PLASTER AND LATH CEILING TO FILLED WITH EITHER FIRE RETARDING SPRAY FOAM OR APPROVED FIRE CAULKING.

### CEILING KEY NOTES:

- 1 PROVIDE NEW METAL STUD FRAMED GYPSUM BOARD SOFFIT, PRIME, TEXTURE, PRIME AND PAINT.
- 2 EXIT LIGHTS - RE ELECTRICAL DRAWINGS.

1 REVISED REFLECTED CEILING PLAN  
3.20 1/4" = 1'-0"



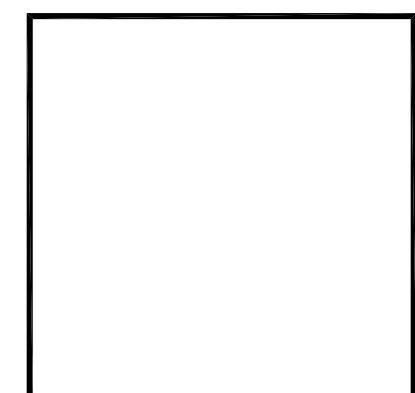
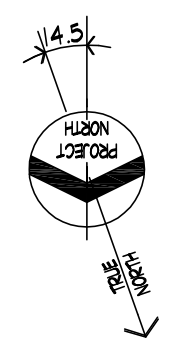


KEY NOTES:  
1. TV MONITOR WITH MOUNTING BRACKET

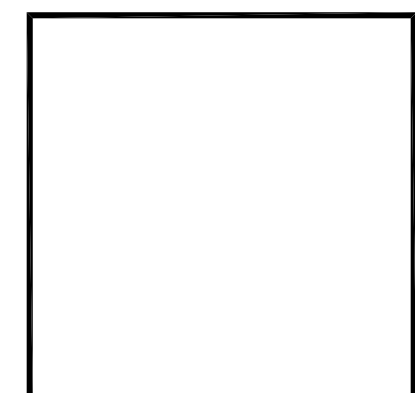
LEGEND:

MB INDICATES MARKER BOARD. BOARD SIZE MAY VARY

1 PARTIAL UPPER FLOOR PLAN  
3.30 1/4" = 1'-0"



AMUNDSEN ASSOCIATES, LLC  
ARCHITECTURE  
PLANNING  
INTERIOR DESIGN  
212 E. Second Street  
307.234.9999  
amundsen@aol.com  
Casper, Wyoming 82601  
fax: 307.234.4542

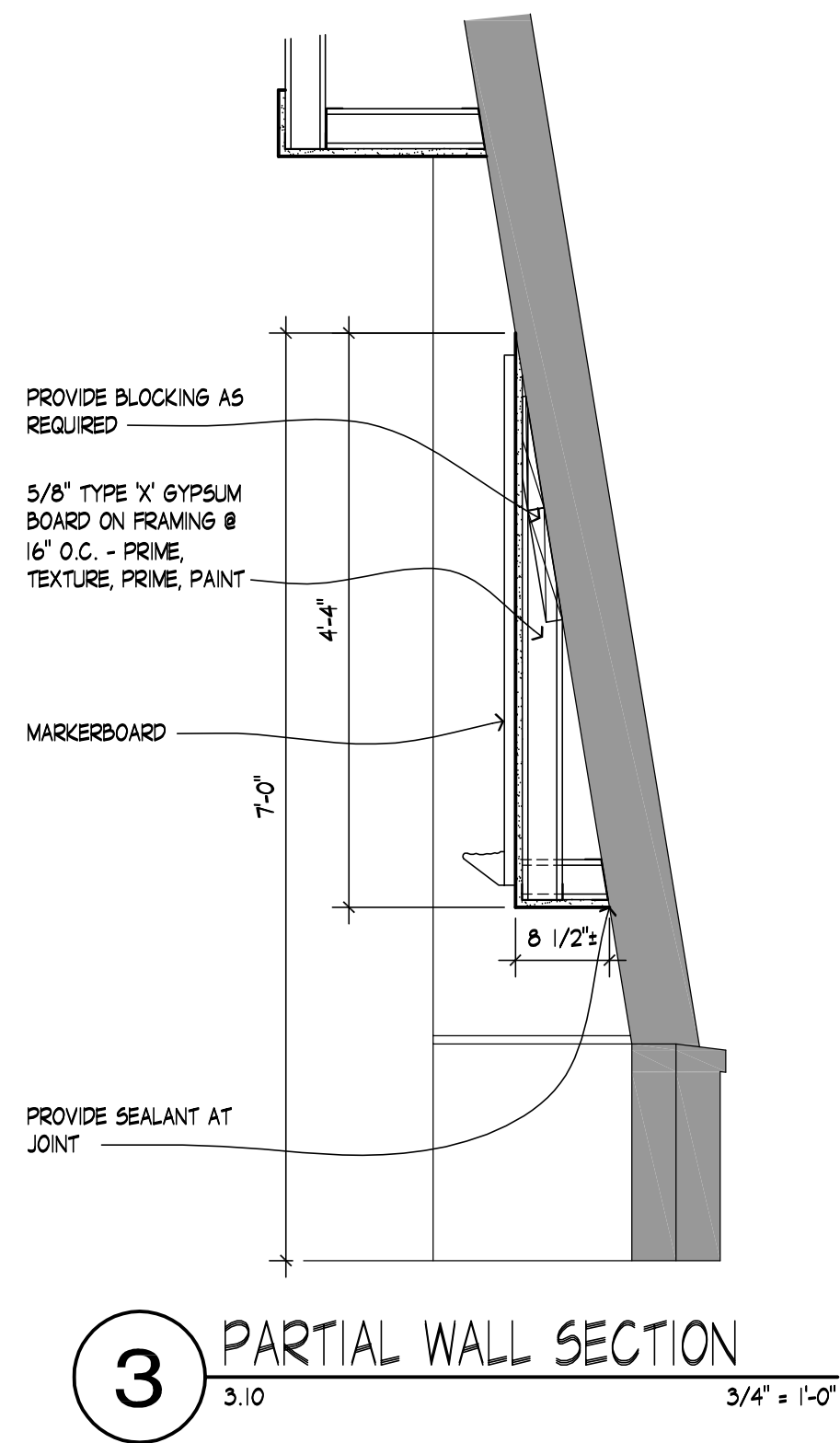


RENOVATION FOR:  
**HEALTH SCIENCE**  
SIMULATION LAB RENOVATION  
CASPER, WYOMING

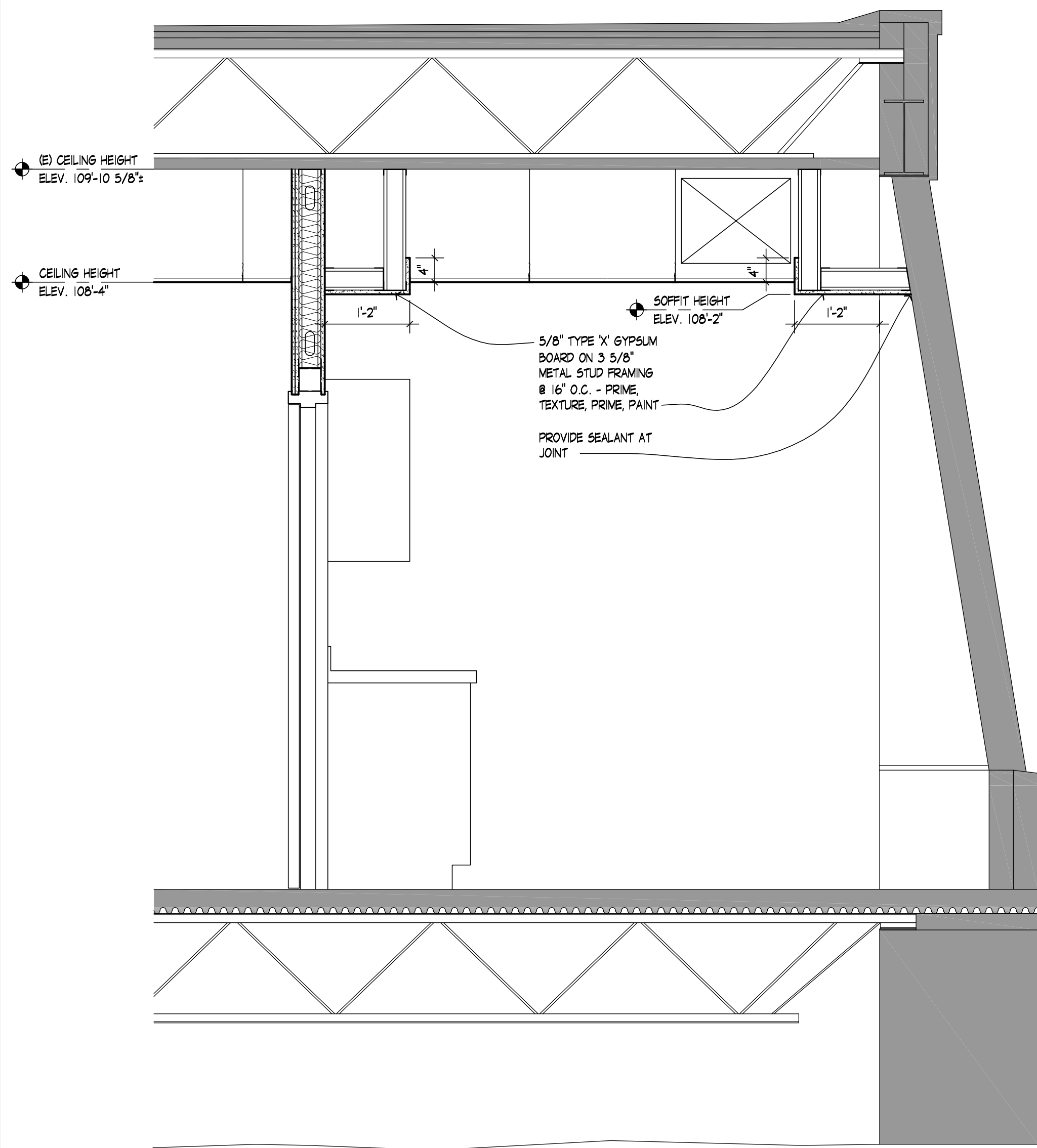
JOB NUMBER:  
12196  
DATE:  
MARCH 21, 2013  
DRAWN BY:  
SRA, AMP  
SHEET TITLE:  
PARTIAL UPPER FLOOR PLAN

3.30  
OF

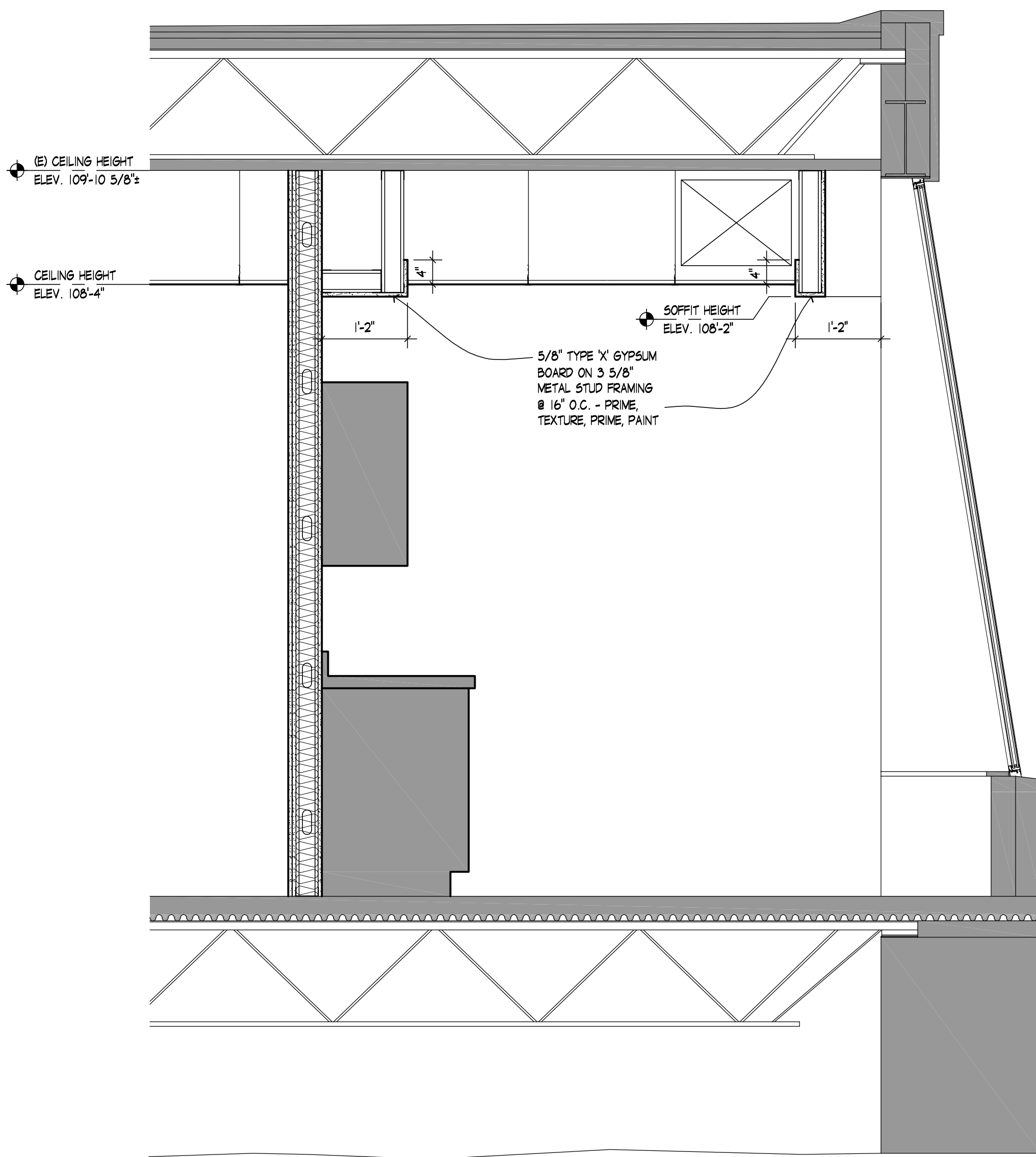




3 PARTIAL WALL SECTION  
3.10 3/4" = 1'-0"



2 PARTIAL BUILDING SECTION  
3.10 3/4" = 1'-0"

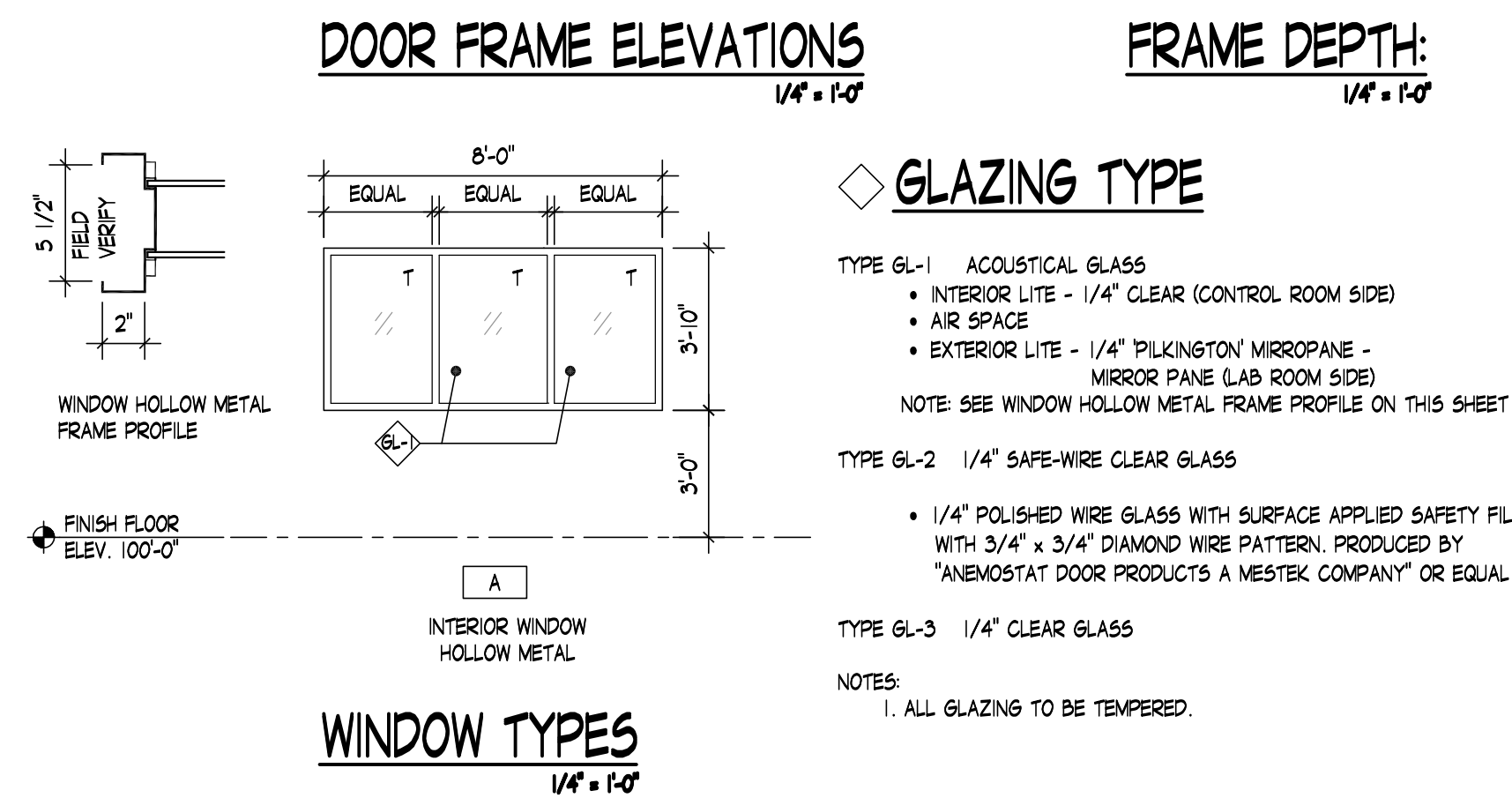
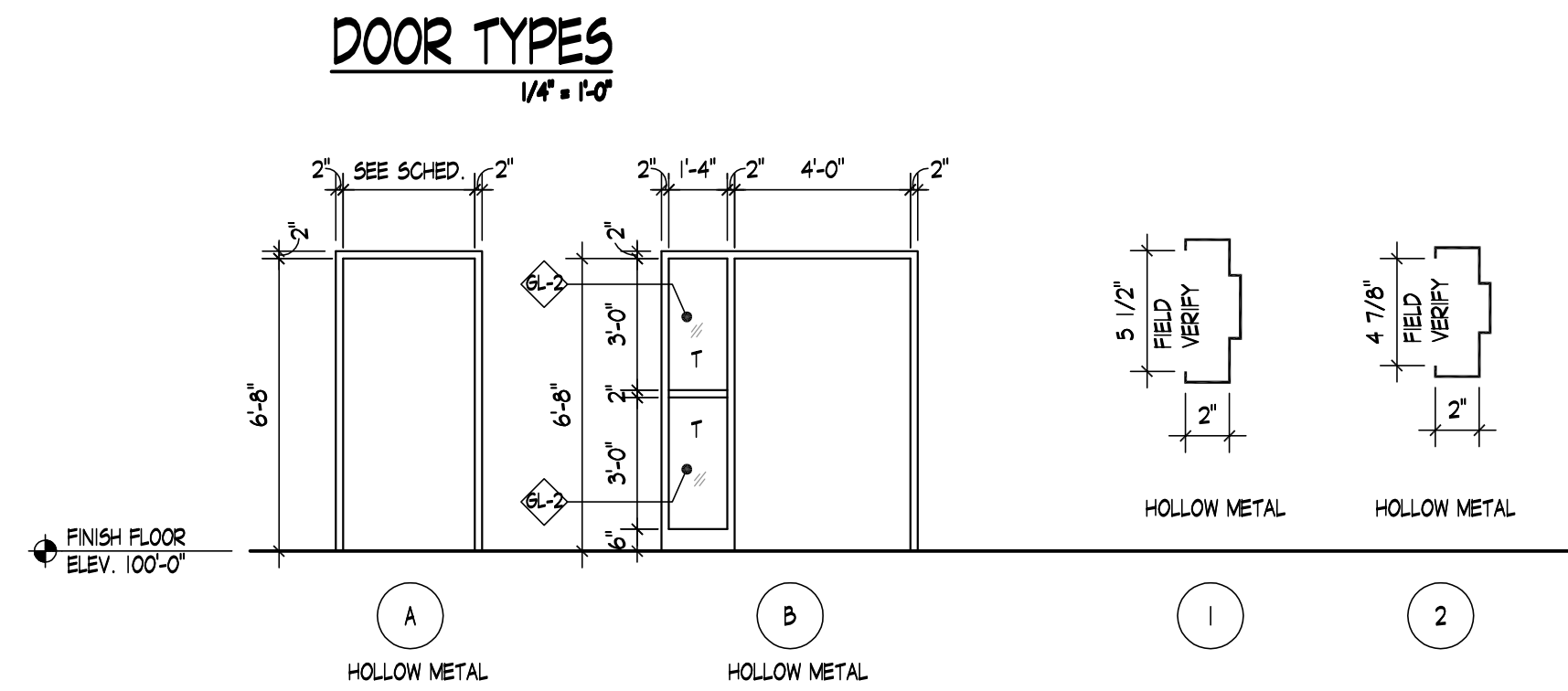
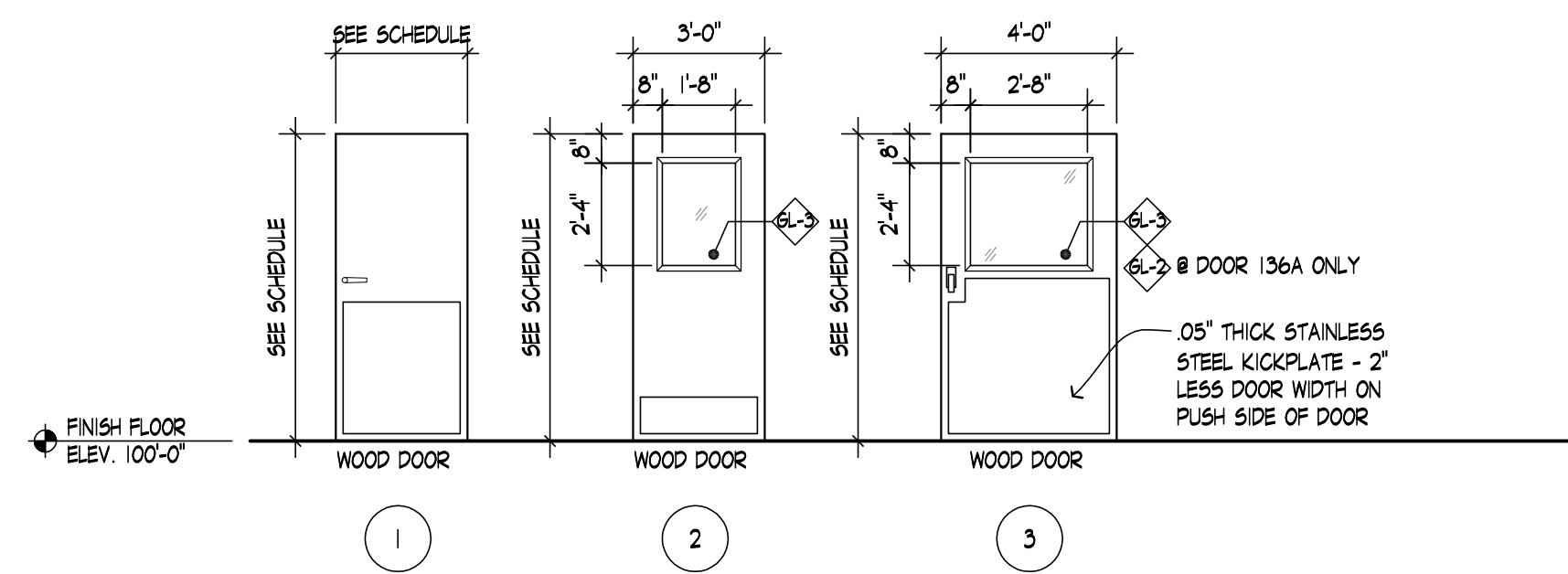


1 PARTIAL BUILDING SECTION  
3.10 3/4" = 1'-0"

### HARDWARE SCHEDULE:

HDW GRP #1 - 134B, 134D, 136B, & 136D				HDW GRP #2 - 134C & 136C				HDW GRP #3 - 134E				HDW GRP #4 - 136A			
EACH DOOR TO HAVE				EACH DOOR TO HAVE				EACH DOOR TO HAVE				EACH DOOR TO HAVE			
4	BUTTS	58B1	HW X 4.5 X 4.5	652	IVES			3	BUTTS	58B1	HW X 4.5 X 4.5	652	IVES		
1	PUSH-PULL LATCH	HL-6	X B X 2 3/4 X A (PUSH DOWN/PULL UP)	626	GYLNN JOHNSON			1	ENTERANCE LOCK	ND3SLD	X SAT X 2 3/4	626	SCHLAGE		
1	CLOSER	404	(XP X HEDA X TB	ALUM	LCN			1	CYLINDER	BY OWNER			MEDECO		
1	KICKPLATE	42"	X 2" LESS DR WIDTH X CUSTOM MADE	US32D	IVES			1	KICKPLATE	10"	X 2" LESS DR WIDTH	US32D	IVES		
3	SILENCERS	SR 64		BLK	IVES			3	SILENCERS	SR 64		BLK	IVES		
1	FLOOR STOP	F5436		US32D	IVES			1	W/STOP	W5407CCV	- DR. 136C	US32D	IVES		
								1	FLOOR STOP	F5436	- DR. 134C	US32D	IVES		
HDW GRP #1 - 134B, 134D, 136B, & 136D				HDW GRP #2 - 134C & 136C				HDW GRP #3 - 134E				HDW GRP #4 - 136A			
EACH DOOR TO HAVE				EACH DOOR TO HAVE				EACH DOOR TO HAVE				EACH DOOR TO HAVE			
4	BUTTS	58B1	HW X 4.5 X 4.5	652	IVES			3	BUTTS	58B1	HW X 4.5 X 4.5	652	IVES		
1	PUSH-PULL LATCH	HL-6	X B X 2 3/4 X A (PUSH DOWN/PULL UP)	626	GYLNN JOHNSON			1	ENTERANCE LOCK	ND3SLD	X SAT X 2 3/4	626	SCHLAGE		
1	CLOSER	404	(XP X HEDA X TB	ALUM	LCN			1	CYLINDER	BY OWNER			MEDECO		
1	KICKPLATE	42"	X 2" LESS DR WIDTH X CUSTOM MADE	US32D	IVES			1	KICKPLATE	10"	X 2" LESS DR WIDTH	US32D	IVES		
3	SILENCERS	SR 64		BLK	IVES			3	SILENCERS	SR 64		BLK	IVES		
1	FLOOR STOP	F5436		US32D	IVES			1	W/STOP	W5407CCV	- DR. 136C	US32D	IVES		
								1	FLOOR STOP	F5436	- DR. 134C	US32D	IVES		
HDW GRP #1 - 134B, 134D, 136B, & 136D				HDW GRP #2 - 134C & 136C				HDW GRP #3 - 134E				HDW GRP #4 - 136A			
EACH DOOR TO HAVE				EACH DOOR TO HAVE				EACH DOOR TO HAVE				EACH DOOR TO HAVE			
4	BUTTS	58B1	HW X 4.5 X 4.5	652	IVES			3	BUTTS	58B1	HW X 4.5 X 4.5	652	IVES		
1	PUSH-PULL LATCH	HL-6	X B X 2 3/4 X A (PUSH DOWN/PULL UP)	626	GYLNN JOHNSON			1	ENTERANCE LOCK	ND3SLD	X SAT X 2 3/4	626	SCHLAGE		
1	CLOSER	404	(XP X HEDA X TB	ALUM	LCN			1	CYLINDER	BY OWNER			MEDECO		
1	KICKPLATE	42"	X 2" LESS DR WIDTH X CUSTOM MADE	US32D	IVES			1	KICKPLATE	10"	X 2" LESS DR WIDTH	US32D	IVES		
3	SILENCERS	SR 64		BLK	IVES			3	SILENCERS	SR 64		BLK	IVES		
1	FLOOR STOP	F5436		US32D	IVES			1	W/STOP	W5407CCV	- DR. 136C	US32D	IVES		
								1	FLOOR STOP	F5436	- DR. 134C	US32D	IVES		

DOOR & FRAME SCHEDULE																			
DOOR NUMBER	DOOR							RATING (MINUTES)	HARDWARE GRP.	FRAME				DETAILS			NOTES	DOOR NUMBER	
	QUANTITY	WIDTH	HEIGHT	MATERIAL	TYPE	GLAZING	FINISH			MATERIAL	ELEVATION	GLAZING	DEPTH	FINISH	HEAD	JAMB			SILL
X134	1	EX	EX	EX	EX	-	EX	-	EX	EX	EX	-	EX	P	-	-	-	I	X134
X135	1	EX	EX	EX	EX	-	EX	-	EX	EX	EX	-	EX	P	-	-	-	I	X135
134B	1	4'-0"	6'-8"	SC	3	GL-3	S	-	1	HM	A	-	1	P	-	-	-	2.3	134B
134C	1	3'-0"	6'-8"	SC	2	GL-3	S	-	2	HM	A	-	1	P	-	-	-	2.3	134C
134D	1	4'-0"	6'-8"	SC	3	GL-3	S	-	1	HM	A	-	1	P	-	-	-	2.3	134D
134E	1	3'-0"	6'-8"	SC	1	-	S	-	3	HM	A	-	2	P	-	-	-	2.3,4	134E
136A	1	4'-0"	6'-8"	SC	3	GL-2	S	20	4	HM	B	GL-2	2	P	-	-	-	2.3,5,6	136A
136B	1	4'-0"	6'-8"	SC	3	GL-3	S	-	1	HM	A	-	1	P	-	-	-	2.3	136B
136C	1	3'-0"	6'-8"	SC	2	GL-3	S	-	2	HM	A	-	1	P	-	-	-	2.3	136C
136D	1	4'-0"	6'-8"	SC	3	GL-3	S	-	1	HM	A	-	1	P	-	-	-	2.3	136D
LEGEND																			
HM	HOLLOW METAL			GL-1 1" INSULATED & TEMPERED				5	STAIN - FACTORY			F	FACTORY FINISH			RC	ROLLING COUNTER DOOR		
WD	WOOD			GL-2 1/4" SAFE WIRE				SC	SOLID CORE- WOOD			FG	FIBER GLASS			WR	WOOD - ROLL UP DOOR		
ALUM	ALUMINUM			GL-3 1/4" TEMPERED GLASS				HC	HOLLOW CORE			ST	STAINLESS STEEL			V	VINYL		
P	PAINT			T TEMPERED GLASS				EX	EXISTING			ACRYL	ACRYLIC						
NOTES																			
1. PRIME AND PAINT EXISTING HOLLOW METAL FRAME.																			
2. NEW WOOD DOORS TO MATCH EXISTING WOOD SPECIES AND COLOR.																			
3. NEW HARDWARE TO MATCH EXISTING.																			
4. PROVIDE 1" UNDER-CUT FOR VENTILATION.																			
5. HOLLOW METAL FRAME TO BE A KNOCK DOWN FRAME.																			
6. FIELD VERIFY EXACT FRAME DEPTH PRIOR TO ORDERING HOLLOW METAL FRAME.																			
GENERAL NOTES:																			
1. ALL DOOR JAMBS 4" FROM FACE OF PERPENDICULAR WALL, UNLESS NOTED OTHERWISE.																			
2. VERIFY ALL FRAME DEPTHS WITH TYPE OF STUDS USED.																			
3. PROVIDE WALL MOUNTED WHERE APPLICABLE OR FLOOR MOUNTED STOPS, ALSO INSTALL ADEQUATE BLOCKING FOR ATTACHMENT, UNLESS NOTED OR SCHEDULED OTHERWISE.																			
4. ALL LOCKS AND LATCH SETS TO BE LEVER HANDLES.																			
5. 1 3/4" FLUSH DOORS - MARSHFIELD- 5 PLY, PRE MACHINED, MATCH EXISTING SPECIES AND COLOR - FIELD VERIFY.																			
6. RE-PAINT ALL EXISTING HOLLOW METAL FRAMES.																			
7. MATCH EXISTING HARDWARE FINISH ON ALL NEW HARDWARE.																			
8. DOOR SUPPLIER TO SUPPLY EITHER WALL STOPS OR FLOOR STOPS AT ALL EXISTING DOORS UNLESS OTHERWISE NOTED. SUPPLIER TO VERIFY QUANTITY. CONTRACTOR TO PROVIDE ADEQUATE BLOCKING IN WALLS TO RECEIVE WALLSTOPS.																			



AMUNDSEN ASSOCIATES, LLC  
ARCHITECTURE  
PLANNING  
INTERIOR DESIGN

212 E. Second Street  
Casper, Wyoming 82601  
307.234.9999  
amundsen@aol.com  
307.234.4542

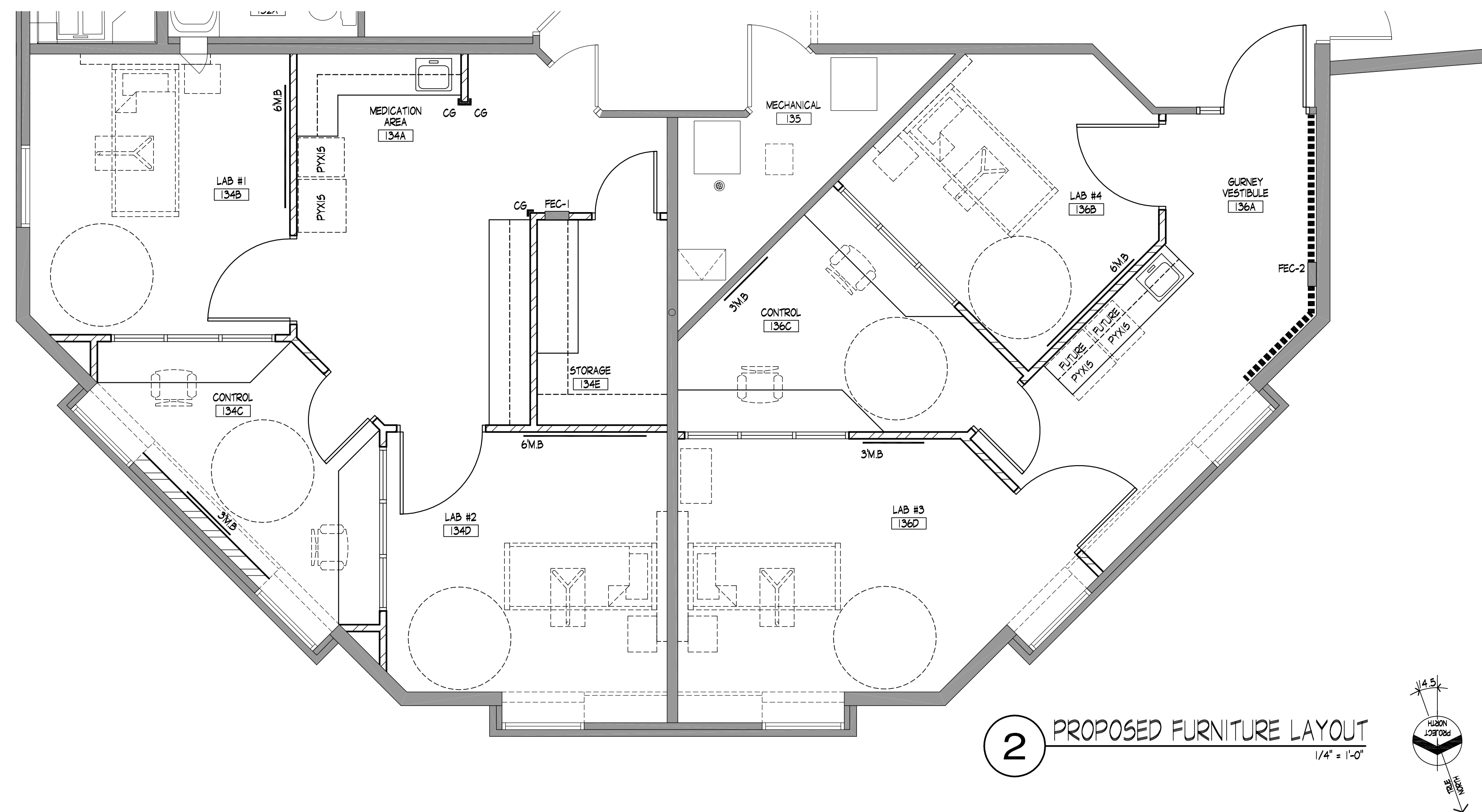
RENOVATION FOR:  
**Casper College**  
**HEALTH SCIENCE**  
SIMULATION LAB RENOVATION  
CASPER, WYOMING

JOB NUMBER:  
12196

DATE:  
MARCH 21, 2013

DRAWN BY:  
SRA, AMP

SHEET TITLE:  
DOOR SCHEDULE, DOOR FRAME  
ELEV., DOOR & WINDOW TYPES,  
GLAZING TYPES, HARDWARE SCH.,  
PARTIAL BUILDING SECTIONS

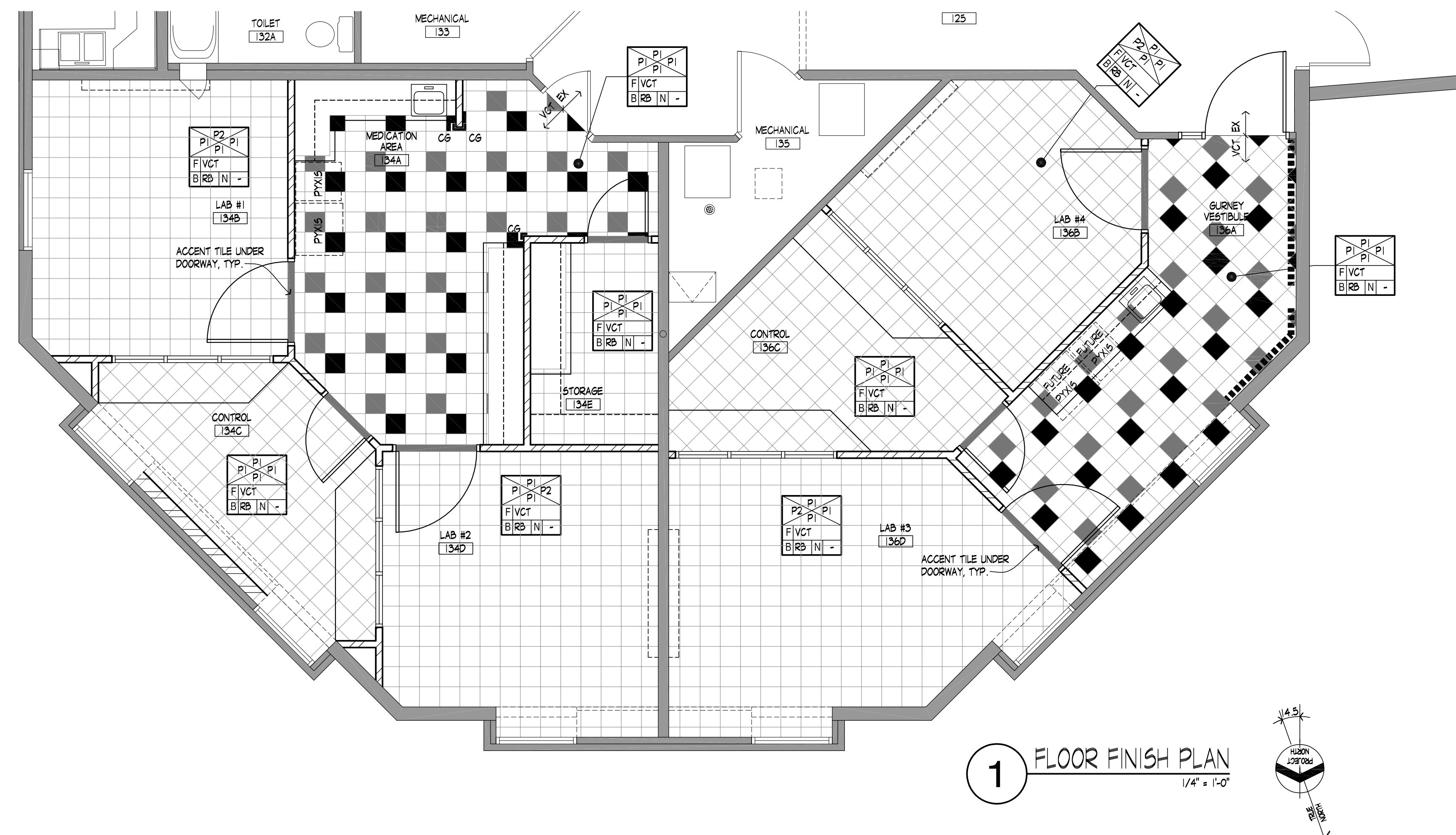


LEGEND: FLOOR FINISHES

VCT VINYL COMPOSITE TILE, COLOR TO BE SELECTED BY OWNER  
EX EXISTING FLOORING TO REMAIN

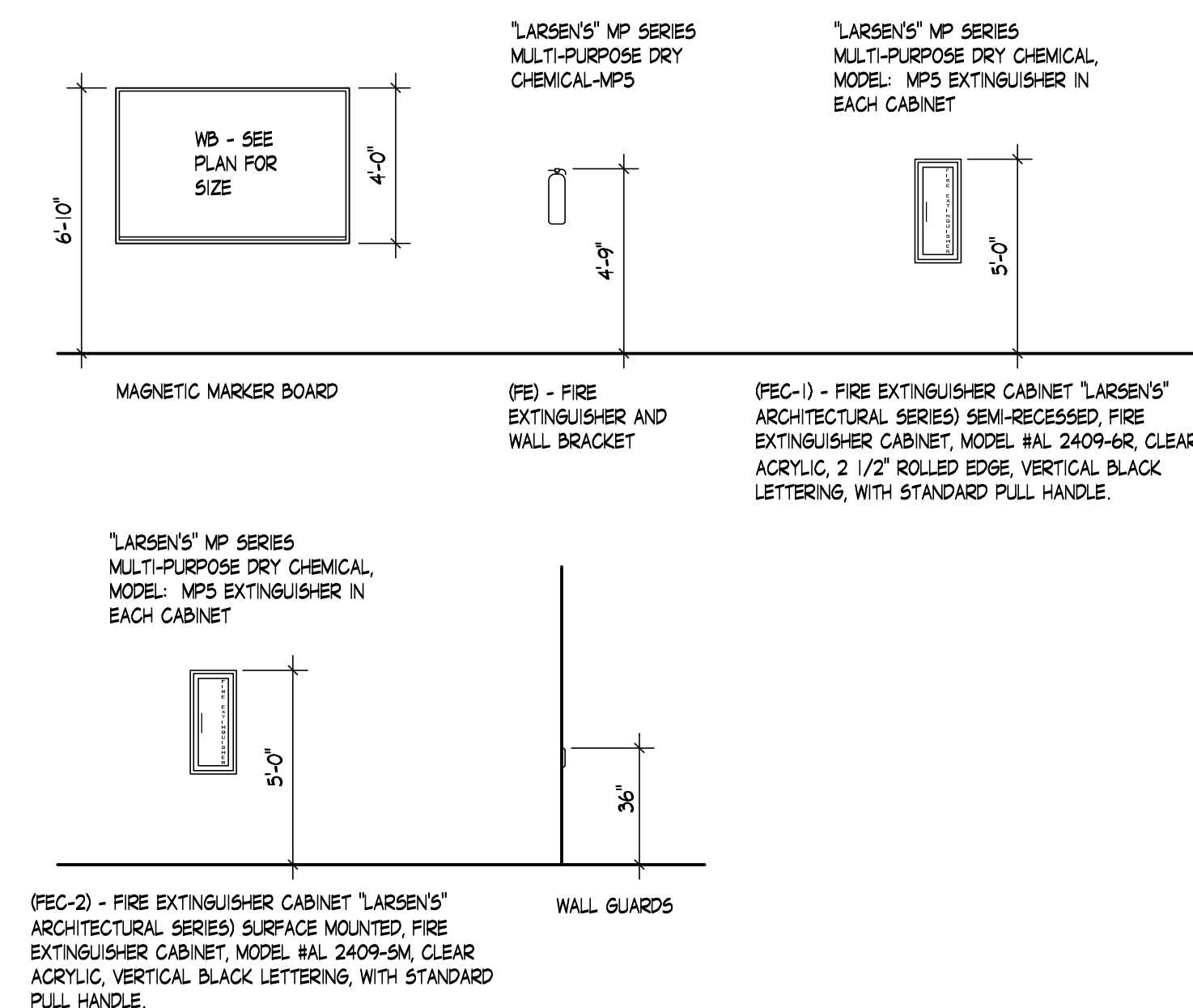
NOTES:

1. INTERIOR HOLLOW METAL DOOR & WINDOW FRAMES - COLOR TO BE SELECTED BY OWNER/ARCHITECT. REPAINT ALL EXISTING HOLLOW METAL DOOR FRAMES.
2. WOOD DOORS - NEW WOOD DOORS TO MATCH EXISTING WOOD SPECIES.
3. CABINETS - PLASTIC LAMINATE "WILSONART" OR "FORMICA" - COLOR TO BE SELECTED BY OWNER/ARCHITECT. DOELKEN 1MM EDGE BANDING - COLOR TO BE SELECTED. INTERIOR TO BE WHITE MELAMINE.
4. COUNTERTOPS - "WILSONART" OR "FORMICA" - COLOR TO BE SELECTED BY OWNER/ARCHITECT. DOELKEN 3MM EDGE BANDING - COLOR TO BE SELECTED.
5. ALL EXPOSED CABINET END PANELS AND TOPS OF WALL CABINETS TO BE PLASTIC LAMINATE "WILSONART" OR "FORMICA" - COLOR TO BE SELECTED BY OWNER/ARCHITECT.
6. PROVIDE RUBBER BASE AT TOE KICK UNDER ALL CASEWORK.



## ACCESSORY MOUNTING HEIGHTS

NOTE: ACCESSORY MOUNTING HEIGHTS ARE SHOWN FOR REFERENCE ONLY THE GENERAL CONTRACTOR IS TO COORDINATE ALL ACCESSORY MOUNTING HEIGHTS WITH PLUMBING FIXTURES TO AVOID CONFLICTS SUCH AS ACCESSORY DOORS NOT OPENING FULLY.



RENOVATION FOR:

---

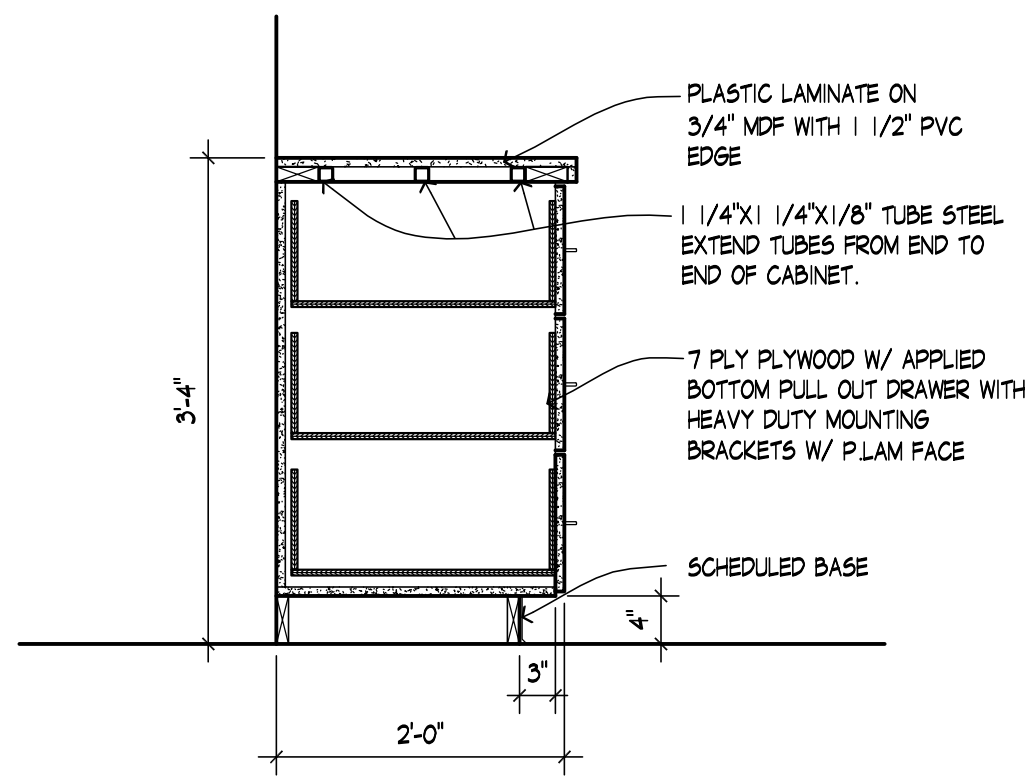
DB NU

12196

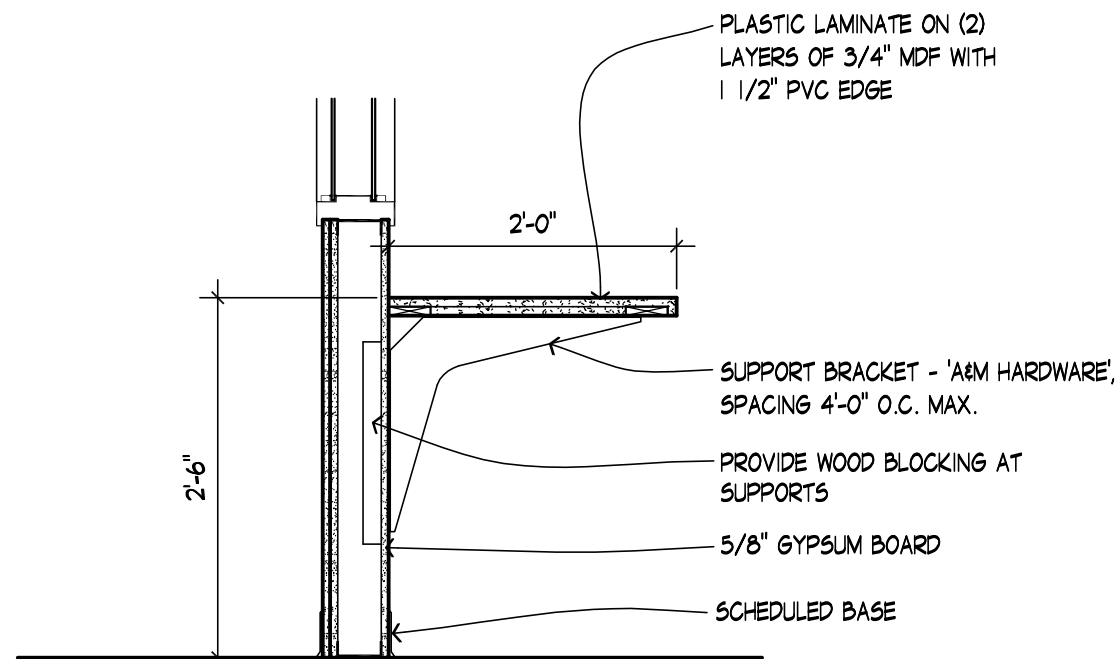
**DATE:**

MARCH

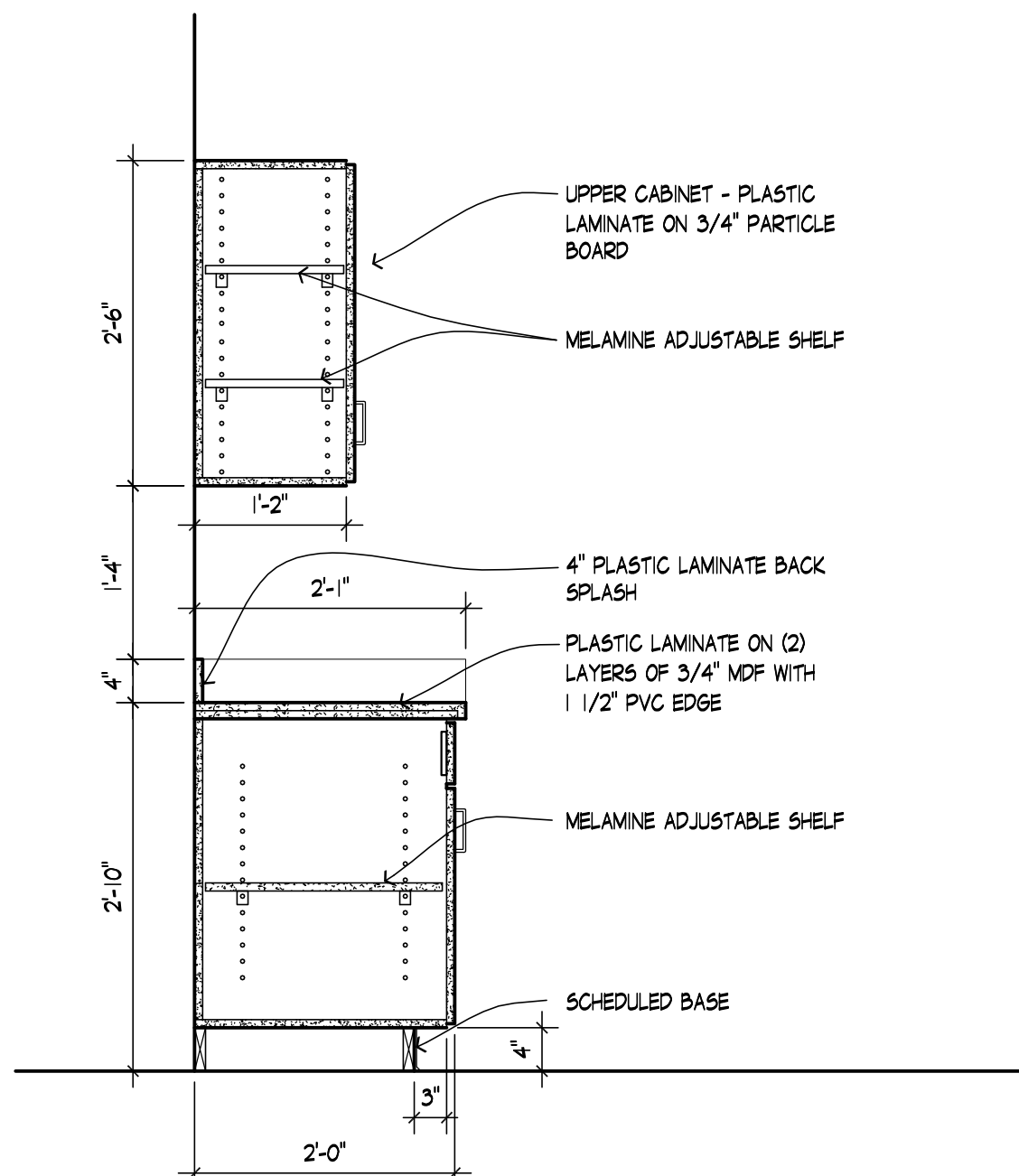




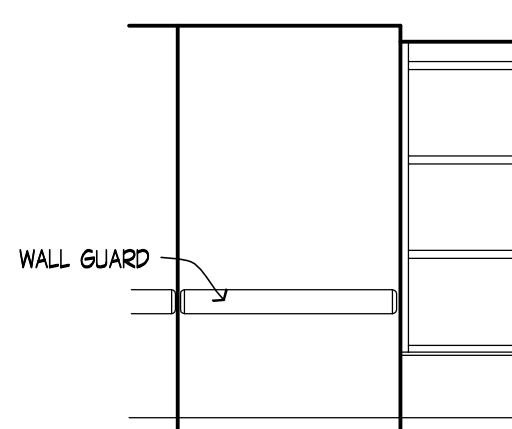
22 MANNEQUIN DRAWER SECTION  
3/4" = 1'-0"



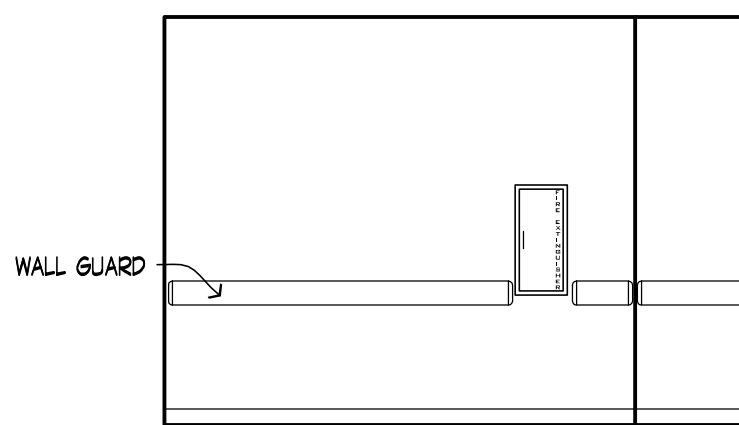
21  
3/4" = 1'-0"



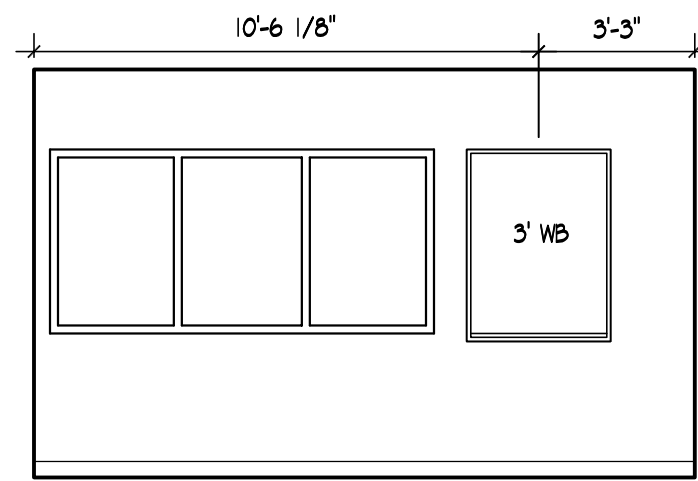
20 TYPICAL SECTION  
3/4" = 1'-0"



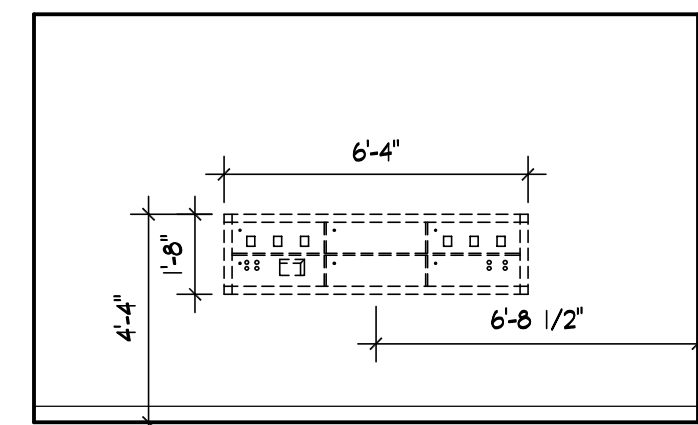
19 GUREY VEST. - 136A  
1/4" = 1'-0"



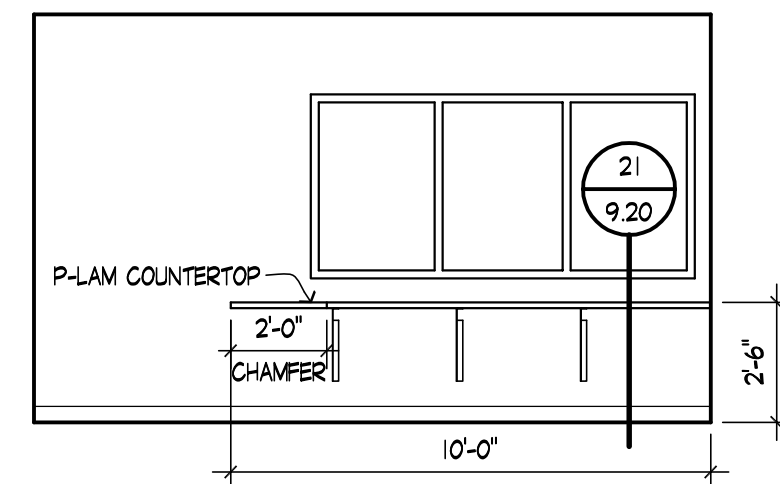
18 GUREY VEST. - 136A  
1/4" = 1'-0"



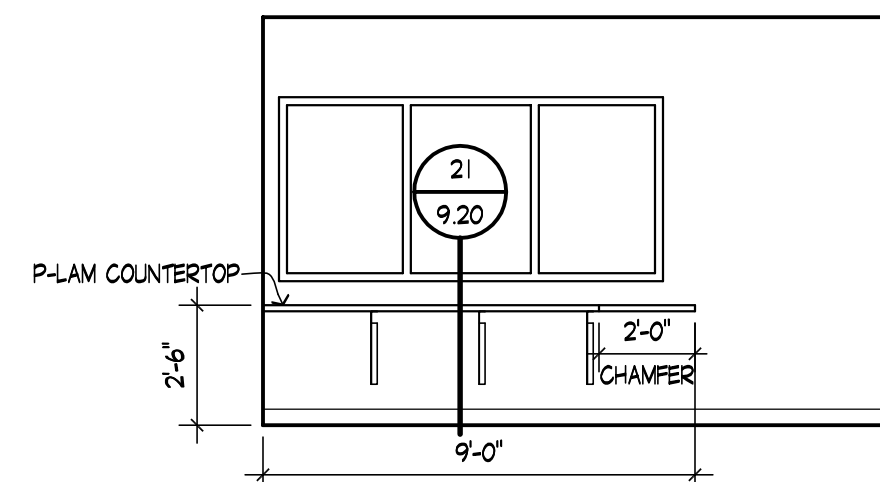
17 LAB #3 - 136D  
1/4" = 1'-0"



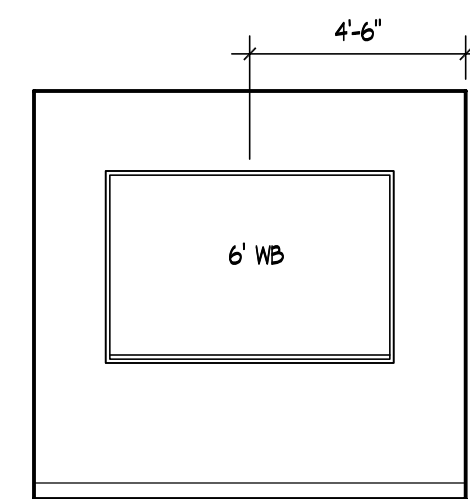
16 LAB #3 - 136D  
1/4" = 1'-0"



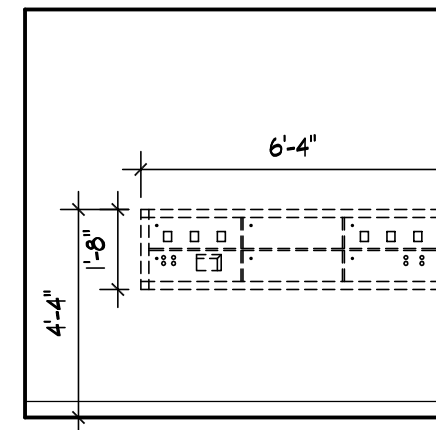
15 CONTROL - 136C  
1/4" = 1'-0"



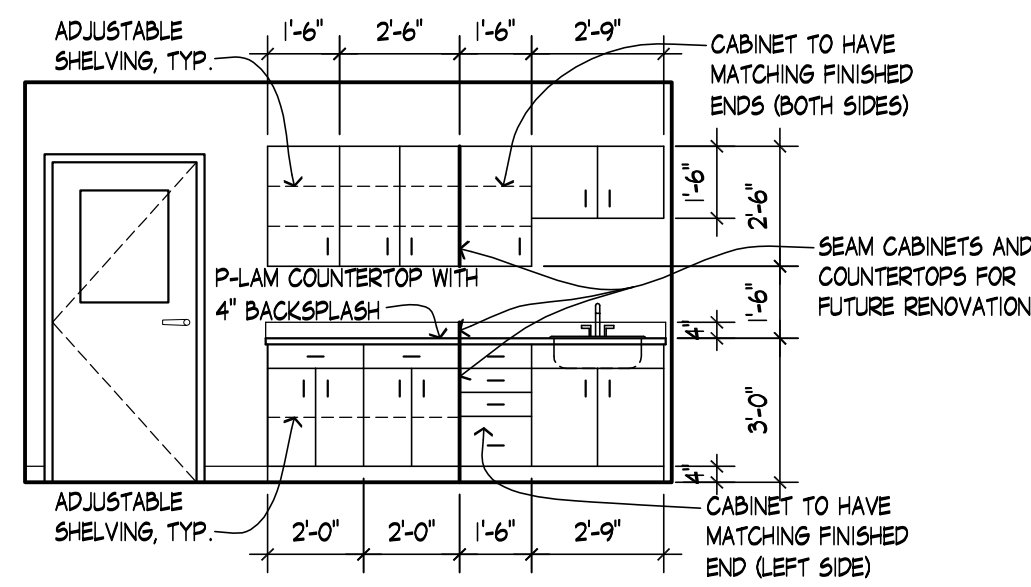
14 CONTROL - 136C  
1/4" = 1'-0"



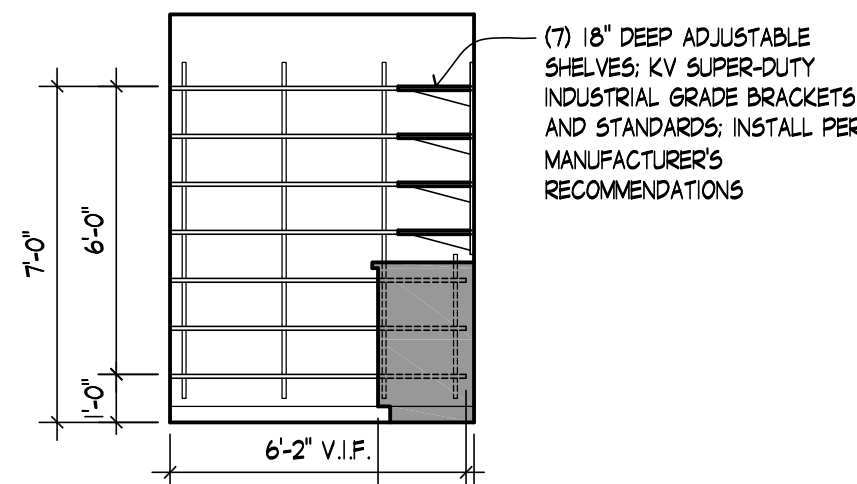
13 LAB #4 - 136B  
1/4" = 1'-0"



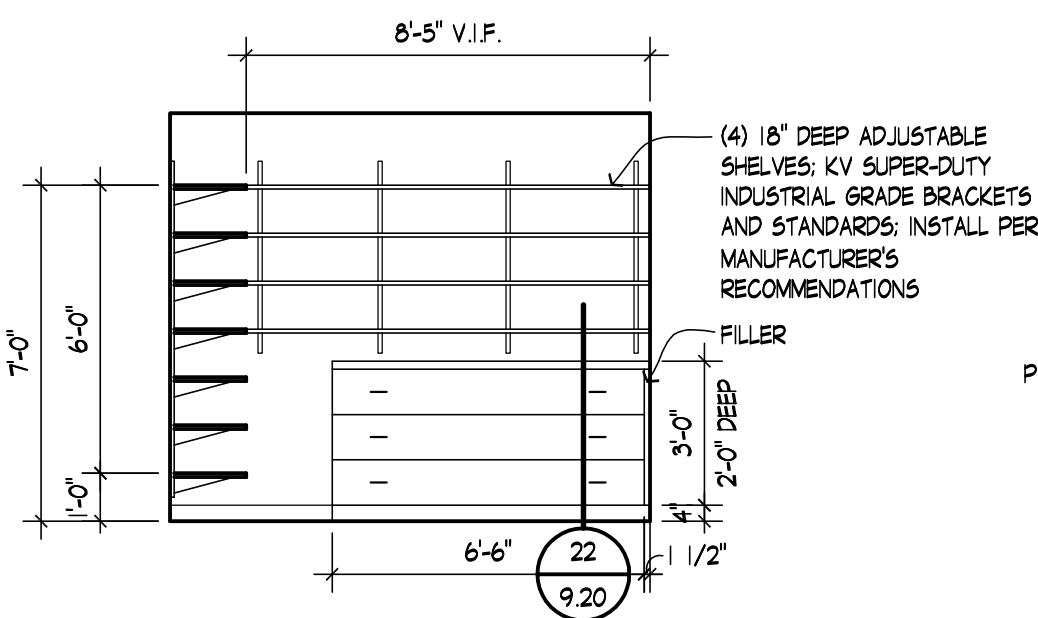
12 LAB #4 - 136B  
1/4" = 1'-0"



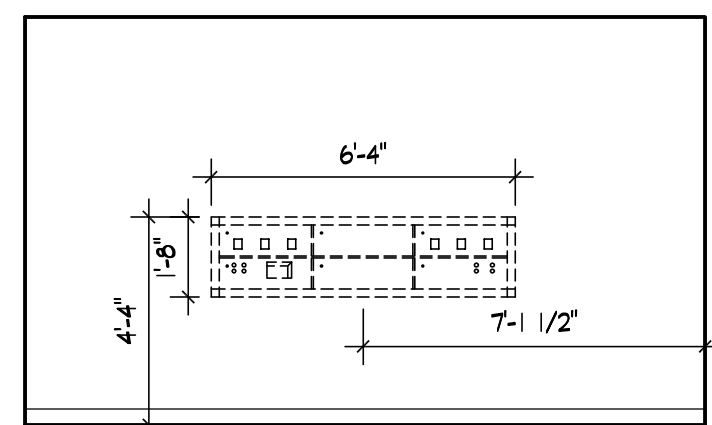
11 GURNEY VESTIBULE - 136A  
1/4" = 1'-0"



10A STORAGE - 134E  
1/4" = 1'-0"



10 STORAGE - 134E  
1/4" = 1'-0"



9 LAB #2 - 134D  
1/4" = 1'-0"

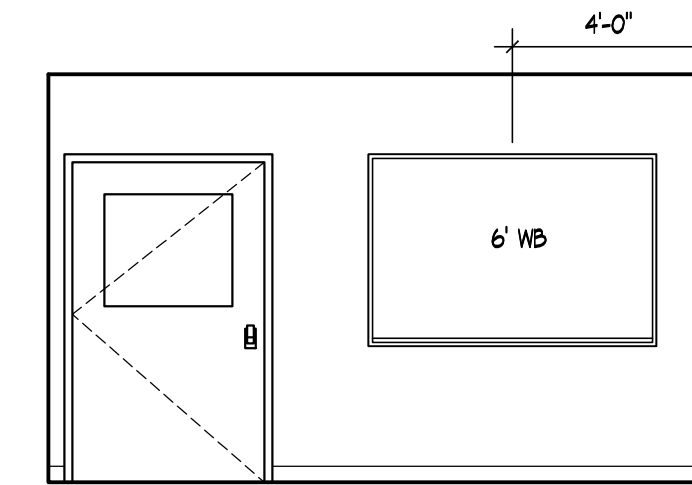
## CASEWORK HARDWARE:

USE CASPER COLLEGE STANDARD HARDWARE

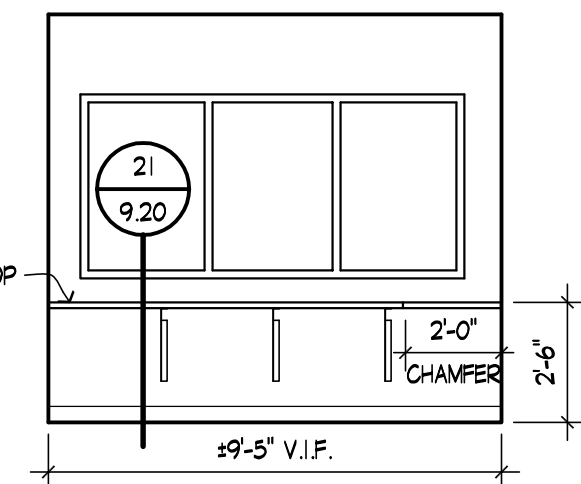
DRAWER SLIDES:  
75 LB. LOAD BEARING  
EPOXY COATED STEEL  
BOTTOM CORNER MOUNTED

FILE DRAWER SLIDES:  
100 LB. LOAD BEARING FULL EXTENSION @ FILE DRAWERS ONLY  
EPOXY COATED STEEL  
BOTTOM CORNER MOUNTED  
PROVIDE BUILT-IN FILE FOLDER SUPPORTS

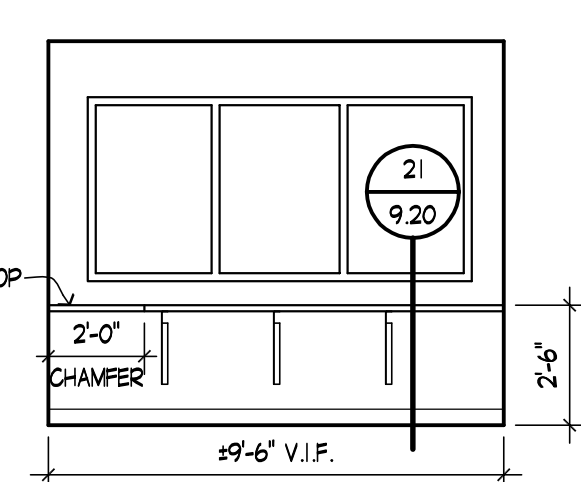
MANNEQUIN DRAWER SLIDES:  
150 LB. LOAD BEARING FULL EXTENSION  
HEAVY DUTY MOUNTING BRACKETS



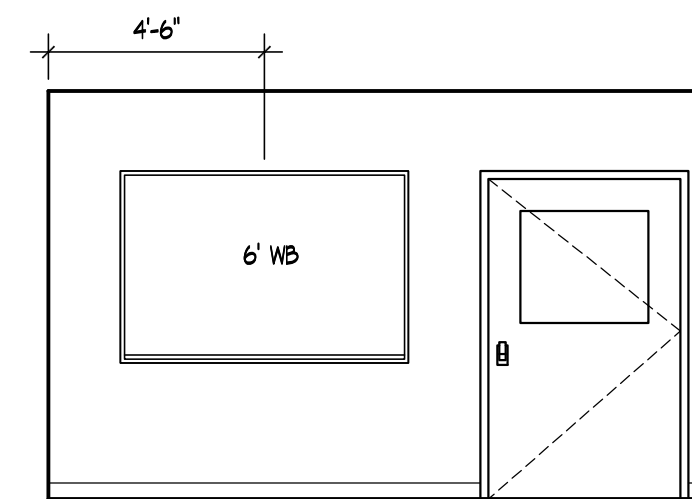
8 LAB #2 - 134D  
1/4" = 1'-0"



7 CONTROL - 134C  
1/4" = 1'-0"



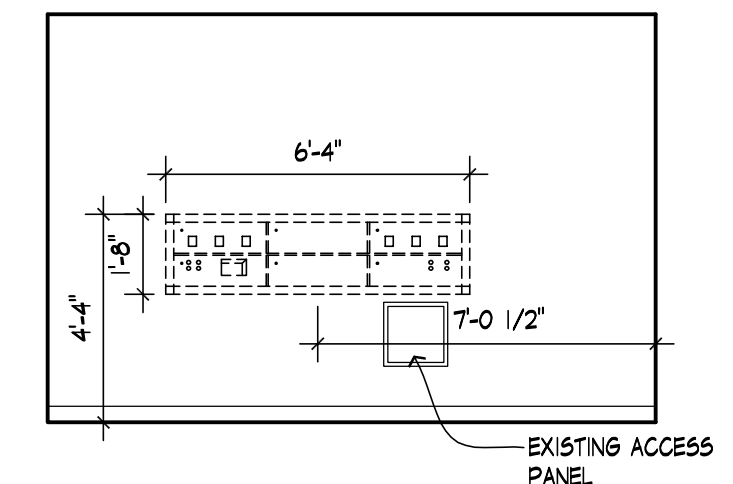
6 CONTROL - 134C  
1/4" = 1'-0"



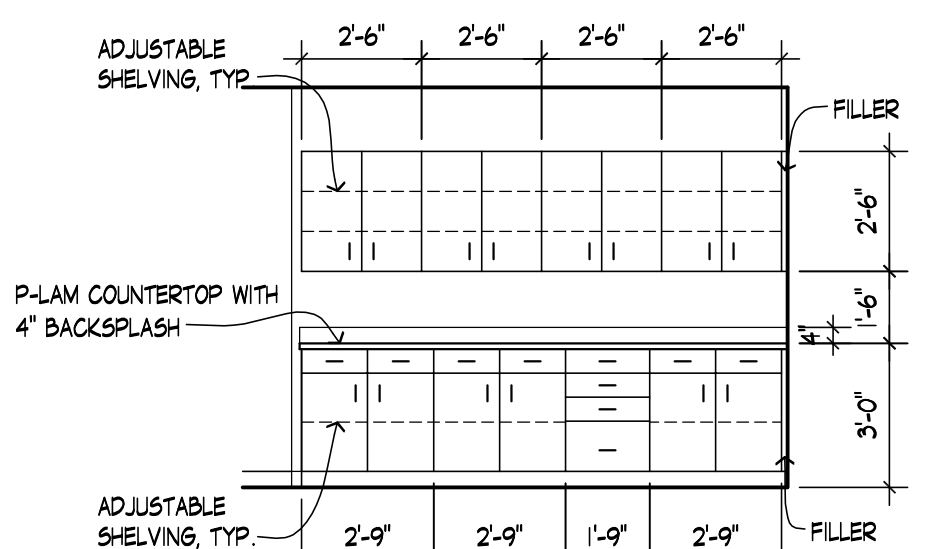
5 LAB #1 - 134B  
1/4" = 1'-0"

## CASEWORK NOTES:

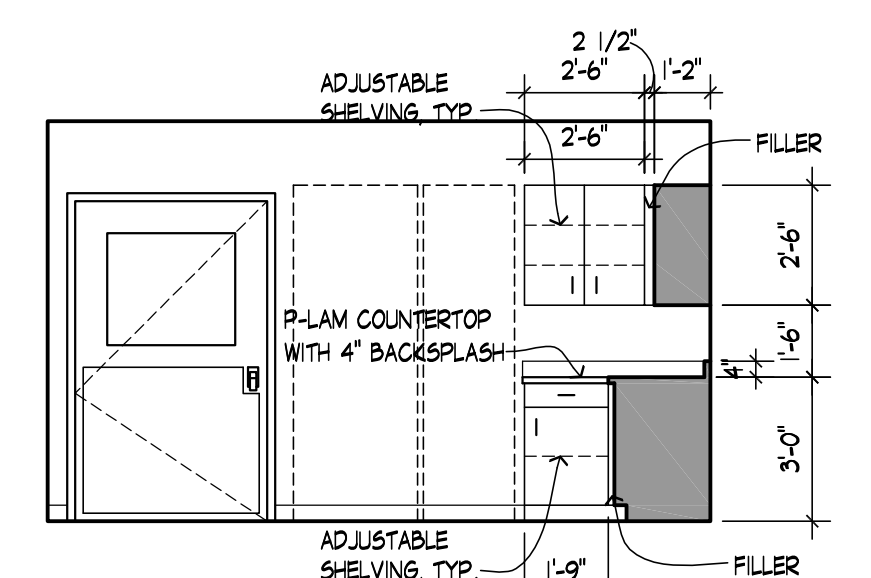
- UNLESS OTHERWISE NOTED - ALL CASEWORK TO BE PLASTIC LAMINATE ON EXTERIOR AND MELAMINE ON INTERIOR. ALL ADJUSTABLE SHELVING TO BE MELAMINE.
- ALL CABINET DIMENSIONS ARE TO BE FIELD VERIFIED.
- ALL SHELVES ARE TO BE ADJUSTABLE UNLESS NOTED OTHERWISE.
- RETURN ALL COUNTER BACKSPLASH AT END WALLS.
- FINISH END PANELS AT ALL EXPOSED ENDS.
- PROVIDE WOOD BLOCKING FOR ALL ACCESSORIES, SHELVING & CABINETS.
- PROVIDE ACCESS PANELS @ ALL PLUMBING VALVES & PIPE CLEANOUTS COORDINATE W/ MECHANICAL.
- PROVIDE 2" DIAMETER PLASTIC GROMMETS @ ALL COUNTERS W/ OUTLETS BELOW. FIELD VERIFY W/ OWNER.
- ALL CUSTOM CASEWORK: SHOP DRAWINGS REQUIRED.
- ALL BASE CASEWORK TO BE 2'-0" WIDE. ALL UPPER CASEWORK TO BE 1'-2" (14) WIDE UNLESS NOTED OTHERWISE.
- CABINET SUPPLIER TO PROVIDE ALL FILLER MATERIALS AND SUPPORT BRACKETS AS REQUIRED.
- CASEWORK CORE MATERIAL TO BE 3/4" PARTICLE BOARD, CABINET BACK TO BE 1/2" PARTICLE BOARD ON SETBACKS. DOOR AND DRAWER EDGING TO BE 1MM PVC. PVC EDGING TO MATCH PLASTIC LAMINATE AND MELAMINE FINISH OR AS SELECTED BY ARCHITECT.
- CAULK CASEWORK EDGES TO ADJACENT WALL SURFACES.
- COORDINATE ALL FIXTURES WITH MECHANICAL AND ELECTRICAL SCHEDULES AS REQUIRED.



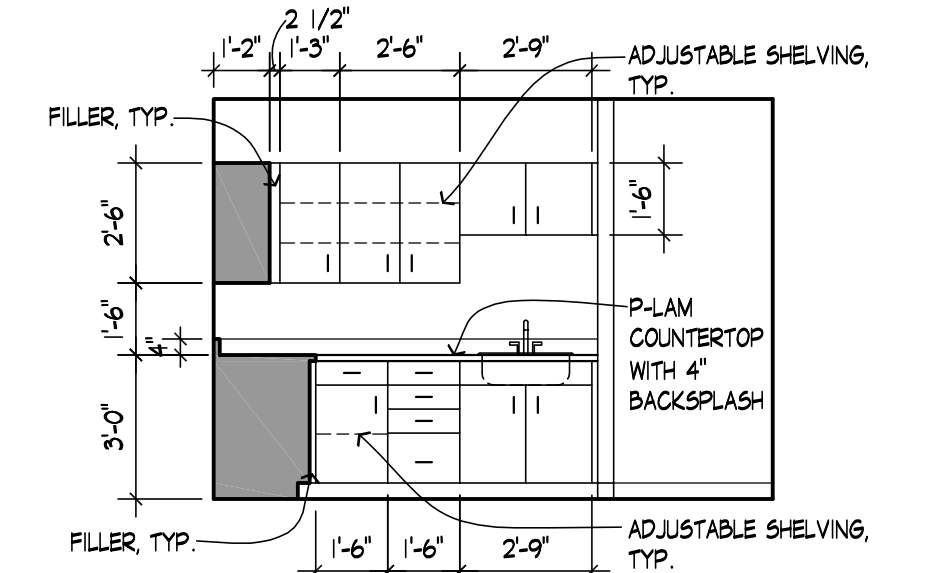
4 LAB #1 - 134B  
1/4" = 1'-0"



3 MEDICATION AREA - 134A  
1/4" = 1'-0"



2 MEDICATION AREA - 134A  
1/4" = 1'-0"



1 MEDICATION AREA - 134A  
1/4" = 1'-0"