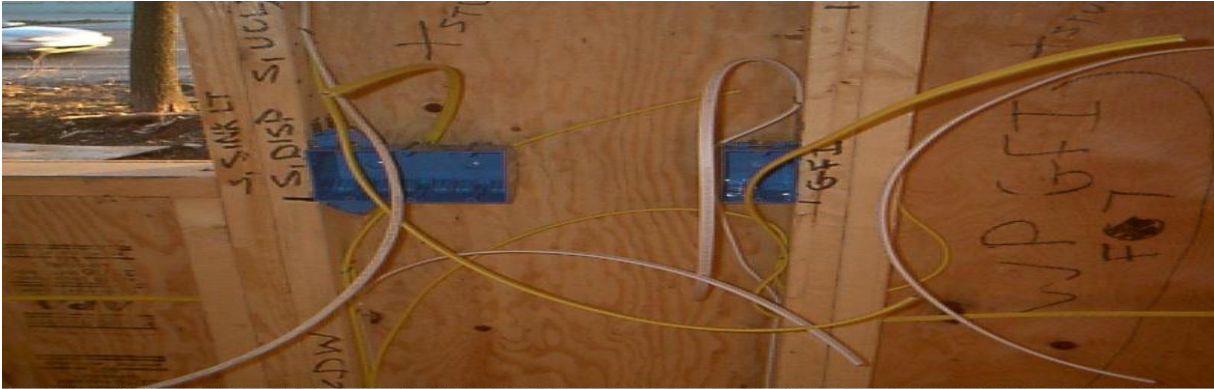


United Tribes Technical College



20040121: Home addition: This is an example of the electrical rough-in partially done. The contractor makes notes on the studs and panels what each thing is for. It looks like PVC boxes are used for residential wiring these days instead of the metal boxes.

Residential Wiring with Lab (ELC- 103) – LAB REPORT

TECHNICIAN _____ Date _____

Booth # _____

Provide the lab job # and a complete description of the classroom and lab work you performed daily this week. **(Please write this report legibly and with complete sentences.)**

Day 1 _____

Material Used:

Residential Wiring - LAB REPORT

Day 2 _____

Material Used:

Day 3 _____

Material Used:

LIST TWO SPECIFIC THINGS THAT YOU LEARNED THIS WEEK

Assessment is worth 11 pts.