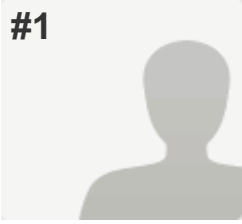


**#1**



**COMPLETE**

**Collector:** Web Link (Web Link)  
**Started:** Monday, September 08, 2014 3:43:02 PM  
**Last Modified:** Monday, September 08, 2014 3:49:16 PM  
**Time Spent:** 00:06:13  
**IP Address:** 208.73.177.89

PAGE 2

**Q1: How long have you been using the JobTrakPA platform?** 1-3 years

PAGE 3

**Q2: How often do you use the JobTrakPA platform?** Once per week or more

---

**Q3: Did you participate in the Empyra/Monster training for the TAACCCT online platform?** Yes

PAGE 4

**Q4: Which 2013 training session did you attend?** Other (please specify),  
Other (please specify) virtual

---

**Q5: Please rate your responses about Empyra's Job Trak PA online platform training.**

Training met my expectations	Agree
The information shared was new to me	Disagree
The session objectives were identified and followed	Agree
The content was organized and easy to follow	Disagree
The training materials were useful	Agree
The trainer was knowledgeable	Agree
The trainer was prepared	Disagree
Participation and interaction were encouraged	Agree

---

**Q6: Overall how would you rate the Empyra training for JobTrak PA online platform?** Mildly good

<b>Q7: Please use the space below for any additional comments.</b>	<i>Respondent skipped this question</i>
<b>Q8: Did you participate in JobTrakPA online platform training with TAACCCT Grant Administration?</b>	No

PAGE 5

<b>Q9: Please rate your training experience with TAACCCT Administrative Team.</b>	<i>Respondent skipped this question</i>
<b>Q10: Overall how do you rate the training with the TAACCCT Grant Administration Team?</b>	<i>Respondent skipped this question</i>
<b>Q11: Please use the space below for any additional comments.</b>	<i>Respondent skipped this question</i>

PAGE 6

**Q12: How satisfied are you with the following features of the JobTrak PA online platform?**

Log in	Very satisfied
Entering student information	Somewhat dissatisfied
Updating student information	Somewhat dissatisfied
Locating students	Somewhat satisfied
Resume builder	Did not use this feature
Adding events	Did not use this feature
Network group site area	Did not use this feature
Creating communication from the system	Somewhat dissatisfied
Sending communication from the system	Somewhat dissatisfied
Printing from the system	Did not use this feature
Creating reports	Did not use this feature
Accessing and using forms (i.e. training application)	Somewhat dissatisfied
Help functions	Did not use this feature
Adding funding to student records	Did not use this feature
Adding training programs to student records	Somewhat dissatisfied
Updating student records	Somewhat dissatisfied
Self service student portal (i.e. job search, email)	Did not use this feature

**Q13: Do you use the JobTrakPA platform to connect to participants?** No

**PAGE 7**

**Q14: Which if any, of the following features do you use with your program participants? (Check all that apply)**

*Respondent skipped this question*

**Q15: If no, how do you connect to program participants?**

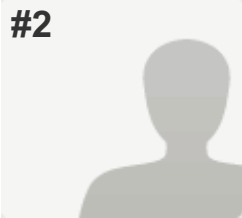
one on one contacts via appointments or calssroom visits

**PAGE 8**

<b>Q16: Have you encountered any technical issues when using the JobTrakPA online platform?</b>	Yes
---	-----

PAGE 9

<b>Q17: How often do you encounter technical problems when using the system?</b>	25% -- 1 out of 4 times
<b>Q18: Have the technical problems you encountered impacted your ability to: (Please check all that apply)</b>	Enter data into system, Be productive
<b>Q19: How would you typically resolve your technical problems? (Check all that apply.)</b>	Send an email to TAACCCT Administration
<b>Q20: How quickly were your technical problems resolved?</b>	Moderately quickly
<b>Q21: Overall, how would you rate the usefulness of the JobTrakPA online platform as a data management system for PA TAACCCT Consortium?</b>	Somewhat useful
<b>Q22: Which college are you from?</b>	Northampton
<b>Q23: Which best describes your position in the TAACCCT program?</b>	Administrator
<b>Q24: Please use the space below for any additional comments.</b>	<i>Respondent skipped this question</i>
<b>Q25: Optional to include your name and contact information</b>	<i>Respondent skipped this question</i>

<p><b>#2</b></p> 	<p><b>COMPLETE</b></p> <p><b>Collector:</b> Web Link (Web Link)  <b>Started:</b> Monday, September 08, 2014 4:19:01 PM  <b>Last Modified:</b> Monday, September 08, 2014 4:21:39 PM  <b>Time Spent:</b> 00:02:38  <b>IP Address:</b> 70.192.129.137</p>
---	---

PAGE 2

<b>Q1: How long have you been using the JobTrakPA platform?</b>	6 months - 1 year
---	-------------------

## PAGE 3

<b>Q2: How often do you use the JobTrakPA platform?</b>	Once per week or more
---	-----------------------

<b>Q3: Did you participate in the Empyra/Monster training for the TAACCCT online platform?</b>	No
--	----

## PAGE 4

<b>Q4: Which 2013 training session did you attend?</b>	<i>Respondent skipped this question</i>
--	---

<b>Q5: Please rate your responses about Empyra's Job Trak PA online platform training.</b>	<i>Respondent skipped this question</i>
--	---

<b>Q6: Overall how would you rate the Empyra training for JobTrak PA online platform?</b>	<i>Respondent skipped this question</i>
---	---

<b>Q7: Please use the space below for any additional comments.</b>	<i>Respondent skipped this question</i>
--	---

<b>Q8: Did you participate in JobTrakPA online platform training with TAACCCT Grant Administration?</b>	No
---	----

## PAGE 5

<b>Q9: Please rate your training experience with TAACCCT Administrative Team.</b>	<i>Respondent skipped this question</i>
---	---

<b>Q10: Overall how do you rate the training with the TAACCCT Grant Administration Team?</b>	<i>Respondent skipped this question</i>
--	---

<b>Q11: Please use the space below for any additional comments.</b>	<i>Respondent skipped this question</i>
---	---

## PAGE 6

**Q12: How satisfied are you with the following features of the JobTrak PA online platform?**

Log in	Very satisfied
Entering student information	Very satisfied
Updating student information	Very satisfied
Locating students	Very satisfied
Resume builder	Did not use this feature
Adding events	Very dissatisfied
Network group site area	Very dissatisfied
Creating communication from the system	Very dissatisfied
Sending communication from the system	Very dissatisfied
Printing from the system	Very dissatisfied
Creating reports	Did not use this feature
Accessing and using forms (i.e. training application)	Somewhat dissatisfied
Help functions	Very dissatisfied
Adding funding to student records	Very dissatisfied
Adding training programs to student records	Very dissatisfied
Updating student records	Somewhat satisfied
Self service student portal (i.e. job search, email)	Somewhat satisfied

**Q13: Do you use the JobTrakPA platform to connect to participants?** No

**PAGE 7**

**Q14: Which if any, of the following features do you use with your program participants? (Check all that apply)**

*Respondent skipped this question*

**Q15: If no, how do you connect to program participants?**

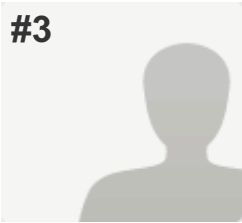
*Respondent skipped this question*

**PAGE 8**

<b>Q16: Have you encountered any technical issues when using the JobTrakPA online platform?</b>	Yes
---	-----

PAGE 9

<b>Q17: How often do you encounter technical problems when using the system?</b>	75% -- 3 out of 4 times
<b>Q18: Have the technical problems you encountered impacted your ability to: (Please check all that apply)</b>	Submit reports, Enter data into system, Complete daily tasks, Be productive
<b>Q19: How would you typically resolve your technical problems? (Check all that apply.)</b>	Reboot, Call TAACCCT Grant Administration
<b>Q20: How quickly were your technical problems resolved?</b>	Not at all quickly
<b>Q21: Overall, how would you rate the usefulness of the JobTrakPA online platform as a data management system for PA TAACCCT Consortium?</b>	Not useful at all
<b>Q22: Which college are you from?</b>	Lehigh
<b>Q23: Which best describes your position in the TAACCCT program?</b>	<i>Respondent skipped this question</i>
<b>Q24: Please use the space below for any additional comments.</b>	<i>Respondent skipped this question</i>
<b>Q25: Optional to include your name and contact information</b>	<i>Respondent skipped this question</i>

<p><b>#3</b></p> 	<p><b>INCOMPLETE</b></p> <p><b>Collector:</b> Web Link (Web Link)  <b>Started:</b> Monday, September 08, 2014 5:22:48 PM  <b>Last Modified:</b> Monday, September 08, 2014 5:23:20 PM  <b>Time Spent:</b> 00:00:32  <b>IP Address:</b> 208.73.177.89</p>
---	--

PAGE 2

**Q1: How long have you been using the JobTrakPA platform?** 1-3 years

## PAGE 3

**Q2: How often do you use the JobTrakPA platform?** Less than once a month

**Q3: Did you participate in the Empyra/Monster training for the TAACCCT online platform?** No

## PAGE 4

**Q4: Which 2013 training session did you attend?** *Respondent skipped this question*

**Q5: Please rate your responses about Empyra's Job Trak PA online platform training.** *Respondent skipped this question*

**Q6: Overall how would you rate the Empyra training for JobTrak PA online platform?** *Respondent skipped this question*

**Q7: Please use the space below for any additional comments.** *Respondent skipped this question*

**Q8: Did you participate in JobTrakPA online platform training with TAACCCT Grant Administration?** Yes

## PAGE 5

**Q9: Please rate your training experience with TAACCCT Administrative Team.** *Respondent skipped this question*

**Q10: Overall how do you rate the training with the TAACCCT Grant Administration Team?** *Respondent skipped this question*

**Q11: Please use the space below for any additional comments.** *Respondent skipped this question*

## PAGE 6



**Q12: How satisfied are you with the following features of the JobTrak PA online platform?**

*Respondent skipped this question*

**Q13: Do you use the JobTrakPA platform to connect to participants?**

*Respondent skipped this question*

**PAGE 7**

**Q14: Which if any, of the following features do you use with your program participants? (Check all that apply)**

*Respondent skipped this question*

**Q15: If no, how do you connect to program participants?**

*Respondent skipped this question*

**PAGE 8**

**Q16: Have you encountered any technical issues when using the JobTrakPA online platform?**

*Respondent skipped this question*

**PAGE 9**

**Q17: How often do you encounter technical problems when using the system?**

*Respondent skipped this question*

**Q18: Have the technical problems you encountered impacted your ability to: (Please check all that apply)**

*Respondent skipped this question*

**Q19: How would you typically resolve your technical problems? (Check all that apply.)**

*Respondent skipped this question*

**Q20: How quickly were your technical problems resolved?**

*Respondent skipped this question*

**Q21: Overall, how would you rate the usefulness of the JobTrakPA online platform as a data management system for PA TAACCCT Consortium?**


*Respondent skipped this question*

**Q22: Which college are you from?**

*Respondent skipped this question*

<b>Q23: Which best describes your position in the TAACCCT program?</b>	<i>Respondent skipped this question</i>
<b>Q24: Please use the space below for any additional comments.</b>	<i>Respondent skipped this question</i>
<b>Q25: Optional to include your name and contact information</b>	<i>Respondent skipped this question</i>

**#4**



**COMPLETE**

**Collector:** Web Link (Web Link)  
**Started:** Tuesday, September 09, 2014 8:08:21 AM  
**Last Modified:** Tuesday, September 09, 2014 8:20:56 AM  
**Time Spent:** 00:12:35  
**IP Address:** 74.43.82.10

PAGE 2

<b>Q1: How long have you been using the JobTrakPA platform?</b>	6 months - 1 year
---	-------------------

PAGE 3

<b>Q2: How often do you use the JobTrakPA platform?</b>	Less than once a month
<b>Q3: Did you participate in the Empyra/Monster training for the TAACCCT online platform?</b>	No

PAGE 4

<b>Q4: Which 2013 training session did you attend?</b>	<i>Respondent skipped this question</i>
<b>Q5: Please rate your responses about Empyra's Job Trak PA online platform training.</b>	<i>Respondent skipped this question</i>
<b>Q6: Overall how would you rate the Empyra training for JobTrak PA online platform?</b>	<i>Respondent skipped this question</i>
<b>Q7: Please use the space below for any additional comments.</b>	<i>Respondent skipped this question</i>

<p><b>Q8: Did you participate in JobTrakPA online platform training with TAACCCT Grant Administration?</b></p>	<p>Yes</p>
--	------------

PAGE 5

<p><b>Q9: Please rate your training experience with TAACCCT Administrative Team.</b></p>	
<p>Training met my expectations</p>	<p>Agree</p>
<p>The information shared was new to me</p>	<p>Strongly agree</p>
<p>The session objectives were identified and followed</p>	<p>Agree</p>
<p>The content was organized and easy to follow</p>	<p>Agree</p>
<p>The training materials were useful</p>	<p>Agree</p>
<p>The trainer was knowledgeable</p>	<p>Agree</p>
<p>The trainer was prepared</p>	<p>Agree</p>
<hr/> <p><b>Q10: Overall how do you rate the training with the TAACCCT Grant Administration Team?</b></p>	
	<p>Good</p>
<hr/> <p><b>Q11: Please use the space below for any additional comments.</b></p>	
	<p><i>Respondent skipped this question</i></p>

PAGE 6

**Q12: How satisfied are you with the following features of the JobTrak PA online platform?**

Log in	Somewhat satisfied
Entering student information	Very satisfied
Updating student information	Somewhat dissatisfied
Locating students	Somewhat satisfied
Resume builder	Did not use this feature
Adding events	Did not use this feature
Network group site area	Did not use this feature
Creating communication from the system	Did not use this feature
Sending communication from the system	Did not use this feature
Printing from the system	Did not use this feature
Creating reports	Did not use this feature
Accessing and using forms (i.e. training application)	Did not use this feature
Help functions	Did not use this feature
Adding funding to student records	Did not use this feature
Adding training programs to student records	Did not use this feature
Updating student records	Somewhat satisfied
Self service student portal (i.e. job search, email)	Did not use this feature

**Q13: Do you use the JobTrakPA platform to connect to participants?** No

**PAGE 7**

**Q14: Which if any, of the following features do you use with your program participants? (Check all that apply)**

*Respondent skipped this question*

**Q15: If no, how do you connect to program participants?**

email or phone

**PAGE 8**

**Q16: Have you encountered any technical issues when using the JobTrakPA online platform?** Yes

## PAGE 9

**Q17: How often do you encounter technical problems when using the system?** 50% -- 2 out of 4 times,  
Please describe the technical problems you encountered  
Signing in

**Q18: Have the technical problems you encountered impacted your ability to: (Please check all that apply)** Submit reports, Enter data into system,  
Complete daily tasks, Be productive,  
Retrieve data, Connect with students

**Q19: How would you typically resolve your technical problems? (Check all that apply.)** Reboot, Call TAACCCT Grant Administration

**Q20: How quickly were your technical problems resolved?** Moderately quickly

**Q21: Overall, how would you rate the usefulness of the JobTrakPA online platform as a data management system for PA TAACCCT Consortium?** Somewhat useful

**Q22: Which college are you from?** Luzerne

**Q23: Which best describes your position in the TAACCCT program?** Career Coach

**Q24: Please use the space below for any additional comments.** *Respondent skipped this question*

**Q25: Optional to include your name and contact information** *Respondent skipped this question*

#5

**COMPLETE****Collector:** Web Link (Web Link)**Started:** Tuesday, September 09, 2014 8:52:12 AM**Last Modified:** Tuesday, September 09, 2014 9:00:52 AM**Time Spent:** 00:08:39**IP Address:** 66.216.141.66

## PAGE 2

<b>Q1: How long have you been using the JobTrakPA platform?</b>	less than 6 months
---	--------------------

## PAGE 3

<b>Q2: How often do you use the JobTrakPA platform?</b>	2 - 3 times per month
---	-----------------------

<b>Q3: Did you participate in the Emyra/Monster training for the TAACCCT online platform?</b>	No
---	----

## PAGE 4

<b>Q4: Which 2013 training session did you attend?</b>	<i>Respondent skipped this question</i>
--	---

<b>Q5: Please rate your responses about Emyra's Job Trak PA online platform training.</b>	<i>Respondent skipped this question</i>
---	---

<b>Q6: Overall how would you rate the Emyra training for JobTrak PA online platform?</b>	<i>Respondent skipped this question</i>
--	---

<b>Q7: Please use the space below for any additional comments.</b>	<i>Respondent skipped this question</i>
--	---

<b>Q8: Did you participate in JobTrakPA online platform training with TAACCCT Grant Administration?</b>	No
---	----

## PAGE 5

<b>Q9: Please rate your training experience with TAACCCT Administrative Team.</b>	<i>Respondent skipped this question</i>
---	---

<b>Q10: Overall how do you rate the training with the TAACCCT Grant Administration Team?</b>	<i>Respondent skipped this question</i>
--	---

<b>Q11: Please use the space below for any additional comments.</b>	<i>Respondent skipped this question</i>
---	---

PAGE 6

**Q12: How satisfied are you with the following features of the JobTrak PA online platform?**

Log in	Somewhat satisfied
Entering student information	Somewhat dissatisfied
Updating student information	Somewhat dissatisfied
Locating students	Very satisfied
Resume builder	Did not use this feature
Adding events	Did not use this feature
Network group site area	Did not use this feature
Creating communication from the system	Did not use this feature
Sending communication from the system	Did not use this feature
Printing from the system	Did not use this feature
Creating reports	Did not use this feature
Accessing and using forms (i.e. training application)	Somewhat satisfied
Help functions	Did not use this feature
Adding funding to student records	Somewhat satisfied
Adding training programs to student records	Somewhat satisfied
Updating student records	Did not use this feature
Self service student portal (i.e. job search, email)	Did not use this feature

---

**Q13: Do you use the JobTrakPA platform to connect to participants?** No

PAGE 7

**Q14: Which if any, of the following features do you use with your program participants? (Check all that apply)** *Respondent skipped this question*

---


**Q15: If no, how do you connect to program participants?**  
 see them in person

PAGE 8

<b>Q16: Have you encountered any technical issues when using the JobTrakPA online platform?</b>	Yes
---	-----

PAGE 9

<b>Q17: How often do you encounter technical problems when using the system?</b>	25% -- 1 out of 4 times ,  Please describe the technical problems you encountered less than 25%. Not being able to log in or get to specific areas
<b>Q18: Have the technical problems you encountered impacted your ability to: (Please check all that apply)</b>	Enter data into system, Complete daily tasks, Be productive
<b>Q19: How would you typically resolve your technical problems? (Check all that apply.)</b>	Send an email to TAACCCT Administration , Other (please specify) wait until another day
<b>Q20: How quickly were your technical problems resolved?</b>	Slightly quickly
<b>Q21: Overall, how would you rate the usefulness of the JobTrakPA online platform as a data management system for PA TAACCCT Consortium?</b>	Not very useful
<b>Q22: Which college are you from?</b>	Reading
<b>Q23: Which best describes your position in the TAACCCT program?</b>	Career Coach
<b>Q24: Please use the space below for any additional comments.</b>	<i>Respondent skipped this question</i>
<b>Q25: Optional to include your name and contact information</b>	<i>Respondent skipped this question</i>

<p><b>#6</b></p> 	<p><b>INCOMPLETE</b></p> <p><b>Collector:</b> Web Link (Web Link)  <b>Started:</b> Tuesday, September 09, 2014 8:50:27 AM  <b>Last Modified:</b> Tuesday, September 09, 2014 9:14:08 AM  <b>Time Spent:</b> 00:23:41  <b>IP Address:</b> 66.216.141.66</p>
--	--



PAGE 2

<b>Q1: How long have you been using the JobTrakPA platform?</b>	1-3 years
---	-----------

PAGE 3

<b>Q2: How often do you use the JobTrakPA platform?</b>	Once per week or more
<b>Q3: Did you participate in the Empyra/Monster training for the TAACCCT online platform?</b>	Yes

PAGE 4

<b>Q4: Which 2013 training session did you attend?</b>	Reading
<b>Q5: Please rate your responses about Empyra's Job Trak PA online platform training.</b>	
Training met my expectations	Agree
The information shared was new to me	Disagree
The session objectives were identified and followed	Agree
The content was organized and easy to follow	Agree
The training materials were useful	Agree
The trainer was knowledgeable	Agree
The trainer was prepared	Agree
Participation and interaction were encouraged	Agree
<b>Q6: Overall how would you rate the Empyra training for JobTrak PA online platform?</b>	Fairly Good
<b>Q7: Please use the space below for any additional comments.</b>	
Training provided was fine, the JobTrakPA system application however was very disappointing. the Issue with JobTrak is not the training has been the actualy system	
<b>Q8: Did you participate in JobTrakPA online platform training with TAACCCT Grant Administration?</b>	Yes

PAGE 5

**Q9: Please rate your training experience with TAACCCT Administrative Team.**

Training met my expectations	Agree
The information shared was new to me	Agree
The session objectives were identified and followed	Agree
The content was organized and easy to follow	Agree
The training materials were useful	Agree
The trainer was knowledgeable	Agree
The trainer was prepared	Agree

---

**Q10: Overall how do you rate the training with the TAACCCT Grant Administration Team?** Good

---

**Q11: Please use the space below for any additional comments.** *Respondent skipped this question*

**Q12: How satisfied are you with the following features of the JobTrak PA online platform?**

Log in	Very dissatisfied
Entering student information	Very dissatisfied
Updating student information	Very dissatisfied
Locating students	Very dissatisfied
Resume builder	Did not use this feature
Adding events	Did not use this feature
Network group site area	Did not use this feature
Creating communication from the system	Did not use this feature
Sending communication from the system	Did not use this feature
Printing from the system	Did not use this feature
Creating reports	Did not use this feature
Accessing and using forms (i.e. training application)	Very dissatisfied
Help functions	Did not use this feature
Adding funding to student records	Very dissatisfied
Adding training programs to student records	Very dissatisfied
Updating student records	Very dissatisfied
Self service student portal (i.e. job search, email)	Very dissatisfied

**Q13: Do you use the JobTrakPA platform to connect to participants?** No

**PAGE 7**

**Q14: Which if any, of the following features do you use with your program participants? (Check all that apply)**

*Respondent skipped this question*

**Q15: If no, how do you connect to program participants?**

Face to face

**PAGE 8**

**Q16: Have you encountered any technical issues when using the JobTrakPA online platform?** Yes

## PAGE 9

**Q17: How often do you encounter technical problems when using the system?** 50% -- 2 out of 4 times,  
Please describe the technical problems you encountered  
The current version is much better than previous, Every revision brought its own set of problems. Data entry is complicated, There have been ongoing problems since the beginning

**Q18: Have the technical problems you encountered impacted your ability to: (Please check all that apply)** Enter data into system, Complete daily tasks, Be productive, Retrieve data

**Q19: How would you typically resolve your technical problems? (Check all that apply.)** Send an email to TAACCCT Administration, Other, Other (please specify) flag my hadcopy files and return to them at a later time/date

**Q20: How quickly were your technical problems resolved?** Not at all quickly

**Q21: Overall, how would you rate the usefulness of the JobTrakPA online platform as a data management system for PA TAACCCT Consortium?** Not useful at all


**Q22: Which college are you from?** Reading

**Q23: Which best describes your position in the TAACCCT program?** Career Coach

**Q24: Please use the space below for any additional comments.** *Respondent skipped this question*

**Q25: Optional to include your name and contact information**

Name Judy Vecchio  
College RACC  
Position Career Coach  
Email address jvecchio@racc.edu  
Telephone number 610-372-4721 Ext. 5716

<p><b>#7</b></p> 	<p><b>INCOMPLETE</b></p> <p><b>Collector:</b> Web Link (Web Link)  <b>Started:</b> Tuesday, September 09, 2014 9:35:57 AM  <b>Last Modified:</b> Tuesday, September 09, 2014 9:36:42 AM  <b>Time Spent:</b> 00:00:44  <b>IP Address:</b> 38.87.49.138</p>
---	---

PAGE 2

<p><b>Q1: How long have you been using the JobTrakPA platform?</b></p>	<p>1-3 years</p>
--	------------------

PAGE 3

<p><b>Q2: How often do you use the JobTrakPA platform?</b></p>	<p>2 - 3 times per month</p>
<p><b>Q3: Did you participate in the Empyra/Monster training for the TAACCCT online platform?</b></p>	<p>Yes</p>

PAGE 4

<p><b>Q4: Which 2013 training session did you attend?</b></p>	<p><i>Respondent skipped this question</i></p>
<p><b>Q5: Please rate your responses about Empyra's Job Trak PA online platform training.</b></p>	<p><i>Respondent skipped this question</i></p>
<p><b>Q6: Overall how would you rate the Empyra training for JobTrak PA online platform?</b></p>	<p><i>Respondent skipped this question</i></p>
<p><b>Q7: Please use the space below for any additional comments.</b></p>	<p><i>Respondent skipped this question</i></p>
<p><b>Q8: Did you participate in JobTrakPA online platform training with TAACCCT Grant Administration?</b></p>	<p><i>Respondent skipped this question</i></p>

PAGE 5

**Q9: Please rate your training experience with TAACCCT Administrative Team.**

*Respondent skipped this question*

**Q10: Overall how do you rate the training with the TAACCCT Grant Administration Team?**

*Respondent skipped this question*

**Q11: Please use the space below for any additional comments.**

*Respondent skipped this question*

**PAGE 6**

**Q12: How satisfied are you with the following features of the JobTrak PA online platform?**

*Respondent skipped this question*

**Q13: Do you use the JobTrakPA platform to connect to participants?**

*Respondent skipped this question*

**PAGE 7**

**Q14: Which if any, of the following features do you use with your program participants? (Check all that apply)**

*Respondent skipped this question*

**Q15: If no, how do you connect to program participants?**

*Respondent skipped this question*

**PAGE 8**

**Q16: Have you encountered any technical issues when using the JobTrakPA online platform?**

*Respondent skipped this question*

**PAGE 9**

**Q17: How often do you encounter technical problems when using the system?**

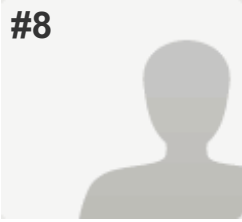
*Respondent skipped this question*

**Q18: Have the technical problems you encountered impacted your ability to: (Please check all that apply)**

*Respondent skipped this question*

<b>Q19: How would you typically resolve your technical problems? (Check all that apply.)</b>	<i>Respondent skipped this question</i>
<b>Q20: How quickly were your technical problems resolved?</b>	<i>Respondent skipped this question</i>
<b>Q21: Overall, how would you rate the usefulness of the JobTrakPA online platform as a data management system for PA TAACCCT Consortium?</b>	<i>Respondent skipped this question</i>
<b>Q22: Which college are you from?</b>	<i>Respondent skipped this question</i>
<b>Q23: Which best describes your position in the TAACCCT program?</b>	<i>Respondent skipped this question</i>
<b>Q24: Please use the space below for any additional comments.</b>	<i>Respondent skipped this question</i>
<b>Q25: Optional to include your name and contact information</b>	<i>Respondent skipped this question</i>

#8



**COMPLETE**

**Collector:** Web Link (Web Link)  
**Started:** Tuesday, September 09, 2014 10:13:08 AM  
**Last Modified:** Tuesday, September 09, 2014 10:18:28 AM  
**Time Spent:** 00:05:19  
**IP Address:** 162.223.16.106

PAGE 2

<b>Q1: How long have you been using the JobTrakPA platform?</b>	1-3 years
---	-----------

PAGE 3

<b>Q2: How often do you use the JobTrakPA platform?</b>	2 - 3 times per month
<b>Q3: Did you participate in the Empyra/Monster training for the TAACCCT online platform?</b>	Yes

PAGE 4

**Q4: Which 2013 training session did you attend?** Other (please specify),  
Other (please specify) philadelphia

**Q5: Please rate your responses about Empyra's Job Trak PA online platform training.**

Training met my expectations	Disagree
The information shared was new to me	Agree
The session objectives were identified and followed	Disagree
The content was organized and easy to follow	Disagree
The training materials were useful	Agree
The trainer was knowledgeable	Agree
The trainer was prepared	Disagree
Participation and interaction were encouraged	Agree

**Q6: Overall how would you rate the Empyra training for JobTrak PA online platform?** Mildly good

**Q7: Please use the space below for any additional comments.** *Respondent skipped this question*

**Q8: Did you participate in JobTrakPA online platform training with TAACCCT Grant Administration?** No

PAGE 5

**Q9: Please rate your training experience with TAACCCT Administrative Team.** *Respondent skipped this question*

**Q10: Overall how do you rate the training with the TAACCCT Grant Administration Team?** *Respondent skipped this question*

**Q11: Please use the space below for any additional comments.**  
The JobTrak PA platform is cumbersome to use. Although useful for running reports I found it too time consuming to use other functions such as scheduling.

PAGE 6



**Q12: How satisfied are you with the following features of the JobTrak PA online platform?**

Log in	Very satisfied
Entering student information	Somewhat satisfied
Updating student information	Somewhat satisfied
Locating students	Very satisfied
Resume builder	Did not use this feature
Adding events	Did not use this feature
Network group site area	Did not use this feature
Creating communication from the system	Did not use this feature
Sending communication from the system	Did not use this feature
Printing from the system	Did not use this feature
Creating reports	Did not use this feature
Accessing and using forms (i.e. training application)	Did not use this feature
Help functions	Did not use this feature
Adding funding to student records	Somewhat satisfied
Adding training programs to student records	Somewhat satisfied
Updating student records	Somewhat satisfied
Self service student portal (i.e. job search, email)	Did not use this feature

**Q13: Do you use the JobTrakPA platform to connect to participants?** No

**PAGE 7**

**Q14: Which if any, of the following features do you use with your program participants? (Check all that apply)**

*Respondent skipped this question*

**Q15: If no, how do you connect to program participants?**

Face to face


**PAGE 8**

<b>Q16: Have you encountered any technical issues when using the JobTrakPA online platform?</b>	No
---	----

PAGE 9

<b>Q17: How often do you encounter technical problems when using the system?</b>	<i>Respondent skipped this question</i>
<b>Q18: Have the technical problems you encountered impacted your ability to: (Please check all that apply)</b>	<i>Respondent skipped this question</i>
<b>Q19: How would you typically resolve your technical problems? (Check all that apply.)</b>	<i>Respondent skipped this question</i>
<b>Q20: How quickly were your technical problems resolved?</b>	<i>Respondent skipped this question</i>
<b>Q21: Overall, how would you rate the usefulness of the JobTrakPA online platform as a data management system for PA TAACCCT Consortium?</b>	Somewhat useful
<b>Q22: Which college are you from?</b>	Philadelphia
<b>Q23: Which best describes your position in the TAACCCT program?</b>	Career Coach
<b>Q24: Please use the space below for any additional comments.</b>	<i>Respondent skipped this question</i>
<b>Q25: Optional to include your name and contact information</b>	<i>Respondent skipped this question</i>

#9



**COMPLETE**

**Collector:** Web Link (Web Link)  
**Started:** Tuesday, September 09, 2014 11:10:46 AM  
**Last Modified:** Tuesday, September 09, 2014 11:14:45 AM  
**Time Spent:** 00:03:58  
**IP Address:** 192.245.50.50

PAGE 2

<b>Q1: How long have you been using the JobTrakPA platform?</b>	1-3 years
---	-----------

PAGE 3

<b>Q2: How often do you use the JobTrakPA platform?</b>	2 - 3 times per month
<b>Q3: Did you participate in the Empyra/Monster training for the TAACCCT online platform?</b>	Yes

PAGE 4

<b>Q4: Which 2013 training session did you attend?</b>	Reading
<b>Q5: Please rate your responses about Empyra's Job Trak PA online platform training.</b>	
Training met my expectations	Disagree
The information shared was new to me	Agree
The session objectives were identified and followed	Agree
The content was organized and easy to follow	Disagree
The training materials were useful	Agree
The trainer was knowledgeable	Disagree
The trainer was prepared	Disagree
Participation and interaction were encouraged	Disagree
<b>Q6: Overall how would you rate the Empyra training for JobTrak PA online platform?</b>	Fairly Good
<b>Q7: Please use the space below for any additional comments.</b>	<i>Respondent skipped this question</i>
<b>Q8: Did you participate in JobTrakPA online platform training with TAACCCT Grant Administration?</b>	No

PAGE 5

<b>Q9: Please rate your training experience with TAACCCT Administrative Team.</b>	<i>Respondent skipped this question</i>
<b>Q10: Overall how do you rate the training with the TAACCCT Grant Administration Team?</b>	<i>Respondent skipped this question</i>
<b>Q11: Please use the space below for any additional comments.</b>	<i>Respondent skipped this question</i>

**PAGE 6**

<b>Q12: How satisfied are you with the following features of the JobTrak PA online platform?</b>	
Log in	Somewhat satisfied
Entering student information	Somewhat satisfied
Updating student information	Somewhat satisfied
Locating students	Somewhat satisfied
Resume builder	Did not use this feature
Adding events	Did not use this feature
Network group site area	Did not use this feature
Creating communication from the system	Did not use this feature
Sending communication from the system	Did not use this feature
Printing from the system	Did not use this feature
Creating reports	Did not use this feature
Accessing and using forms (i.e. training application)	Did not use this feature
Help functions	Did not use this feature
Adding funding to student records	Somewhat satisfied
Adding training programs to student records	Somewhat satisfied
Updating student records	Somewhat satisfied
Self service student portal (i.e. job search, email)	Did not use this feature
<b>Q13: Do you use the JobTrakPA platform to connect to participants?</b>	No

**PAGE 7**

**Q14: Which if any, of the following features do you use with your program participants? (Check all that apply)**

*Respondent skipped this question*

**Q15: If no, how do you connect to program participants?**

phone and email

PAGE 8

**Q16: Have you encountered any technical issues when using the JobTrakPA online platform?**

Yes

PAGE 9

**Q17: How often do you encounter technical problems when using the system?**

25% -- 1 out of 4 times

**Q18: Have the technical problems you encountered impacted your ability to: (Please check all that apply)**

Retrieve data

**Q19: How would you typically resolve your technical problems? (Check all that apply.)**

Call TAACCCT Grant Administration

**Q20: How quickly were your technical problems resolved?**

Moderately quickly

**Q21: Overall, how would you rate the usefulness of the JobTrakPA online platform as a data management system for PA TAACCCT Consortium?**

Somewhat useful

**Q22: Which college are you from?**

Montgomery

**Q23: Which best describes your position in the TAACCCT program?**

Administrative/Clerical

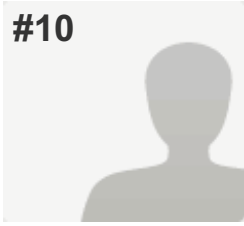
**Q24: Please use the space below for any additional comments.**

*Respondent skipped this question*

**Q25: Optional to include your name and contact information**

*Respondent skipped this question*

#10



**COMPLETE**

**Collector:** Web Link (Web Link)  
**Started:** Tuesday, September 09, 2014 11:04:59 AM  
**Last Modified:** Tuesday, September 09, 2014 11:15:25 AM  
**Time Spent:** 00:10:25  
**IP Address:** 162.223.16.2

PAGE 2

<b>Q1: How long have you been using the JobTrakPA platform?</b>	less than 6 months
---	--------------------

PAGE 3

<b>Q2: How often do you use the JobTrakPA platform?</b>	Once per week or more
<b>Q3: Did you participate in the Empyra/Monster training for the TAACCCT online platform?</b>	No

PAGE 4

<b>Q4: Which 2013 training session did you attend?</b>	<i>Respondent skipped this question</i>
<b>Q5: Please rate your responses about Empyra's Job Trak PA online platform training.</b>	<i>Respondent skipped this question</i>
<b>Q6: Overall how would you rate the Empyra training for JobTrak PA online platform?</b>	<i>Respondent skipped this question</i>
<b>Q7: Please use the space below for any additional comments.</b>	<i>Respondent skipped this question</i>
<b>Q8: Did you participate in JobTrakPA online platform training with TAACCCT Grant Administration?</b>	No

PAGE 5

**Q9: Please rate your training experience with TAACCCT Administrative Team.**

*Respondent skipped this question*

**Q10: Overall how do you rate the training with the TAACCCT Grant Administration Team?**

*Respondent skipped this question*

**Q11: Please use the space below for any additional comments.**

*Respondent skipped this question*

**PAGE 6**

**Q12: How satisfied are you with the following features of the JobTrak PA online platform?**

Log in	Very satisfied
Entering student information	Very satisfied
Updating student information	Very satisfied
Locating students	Very satisfied
Resume builder	Did not use this feature
Adding events	Did not use this feature
Network group site area	Did not use this feature
Creating communication from the system	Did not use this feature
Sending communication from the system	Did not use this feature
Printing from the system	Somewhat satisfied
Creating reports	Did not use this feature
Accessing and using forms (i.e. training application)	Somewhat satisfied
Help functions	Somewhat satisfied
Adding funding to student records	Somewhat satisfied
Adding training programs to student records	Somewhat satisfied
Updating student records	Somewhat satisfied
Self service student portal (i.e. job search, email)	Did not use this feature

**Q13: Do you use the JobTrakPA platform to connect to participants?** No

**PAGE 7**

**Q14: Which if any, of the following features do you use with your program participants? (Check all that apply)**

*Respondent skipped this question*

**Q15: If no, how do you connect to program participants?**

I contact them via phone and email.

PAGE 8

**Q16: Have you encountered any technical issues when using the JobTrakPA online platform?**

No

PAGE 9

**Q17: How often do you encounter technical problems when using the system?**

*Respondent skipped this question*

**Q18: Have the technical problems you encountered impacted your ability to: (Please check all that apply)**

*Respondent skipped this question*

**Q19: How would you typically resolve your technical problems? (Check all that apply.)**

*Respondent skipped this question*

**Q20: How quickly were your technical problems resolved?**

*Respondent skipped this question*

**Q21: Overall, how would you rate the usefulness of the JobTrakPA online platform as a data management system for PA TAACCCT Consortium?**

Somewhat useful

**Q22: Which college are you from?**

Westmoreland

**Q23: Which best describes your position in the TAACCCT program?**

Career Coach

**Q24: Please use the space below for any additional comments.**

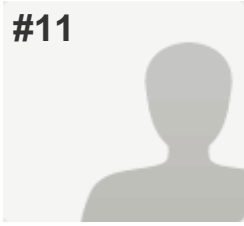
*Respondent skipped this question*

**Q25: Optional to include your name and contact information**

*Respondent skipped this question*



#11



**INCOMPLETE**

**Collector:** Web Link (Web Link)  
**Started:** Tuesday, September 09, 2014 11:45:44 AM  
**Last Modified:** Tuesday, September 09, 2014 11:46:52 AM  
**Time Spent:** 00:01:07  
**IP Address:** 162.223.16.106

PAGE 2

<b>Q1: How long have you been using the JobTrakPA platform?</b>	Never
---	-------

PAGE 3

<b>Q2: How often do you use the JobTrakPA platform?</b>	<i>Respondent skipped this question</i>
<b>Q3: Did you participate in the Empyra/Monster training for the TAACCCT online platform?</b>	No

PAGE 4

<b>Q4: Which 2013 training session did you attend?</b>	<i>Respondent skipped this question</i>
<b>Q5: Please rate your responses about Empyra's Job Trak PA online platform training.</b>	<i>Respondent skipped this question</i>
<b>Q6: Overall how would you rate the Empyra training for JobTrak PA online platform?</b>	<i>Respondent skipped this question</i>
<b>Q7: Please use the space below for any additional comments.</b>	<i>Respondent skipped this question</i>
<b>Q8: Did you participate in JobTrakPA online platform training with TAACCCT Grant Administration?</b>	No

PAGE 5

<b>Q9: Please rate your training experience with TAACCCT Administrative Team.</b>	<i>Respondent skipped this question</i>
<b>Q10: Overall how do you rate the training with the TAACCCT Grant Administration Team?</b>	<i>Respondent skipped this question</i>
<b>Q11: Please use the space below for any additional comments.</b>	<i>Respondent skipped this question</i>

**PAGE 6**

<b>Q12: How satisfied are you with the following features of the JobTrak PA online platform?</b>	
Log in	Did not use this feature
Entering student information	Did not use this feature
Updating student information	Did not use this feature
Locating students	Did not use this feature
Resume builder	Did not use this feature
Adding events	Did not use this feature
Network group site area	Did not use this feature
Creating communication from the system	Did not use this feature
Sending communication from the system	Did not use this feature
Printing from the system	Did not use this feature
Creating reports	Did not use this feature
Accessing and using forms (i.e. training application)	Did not use this feature
Help functions	Did not use this feature
Adding funding to student records	Did not use this feature
Adding training programs to student records	Did not use this feature
Updating student records	Did not use this feature
Self service student portal (i.e. job search, email)	Did not use this feature
<b>Q13: Do you use the JobTrakPA platform to connect to participants?</b>	No

**PAGE 7**

**Q14: Which if any, of the following features do you use with your program participants? (Check all that apply)**

*Respondent skipped this question*

**Q15: If no, how do you connect to program participants?**

*Respondent skipped this question*

PAGE 8

**Q16: Have you encountered any technical issues when using the JobTrakPA online platform?**

No

PAGE 9

**Q17: How often do you encounter technical problems when using the system?**

*Respondent skipped this question*

**Q18: Have the technical problems you encountered impacted your ability to: (Please check all that apply)**

*Respondent skipped this question*

**Q19: How would you typically resolve your technical problems? (Check all that apply.)**

*Respondent skipped this question*

**Q20: How quickly were your technical problems resolved?**

*Respondent skipped this question*

**Q21: Overall, how would you rate the usefulness of the JobTrakPA online platform as a data management system for PA TAACCCT Consortium?**

Not useful at all

**Q22: Which college are you from?**

Philadelphia

**Q23: Which best describes your position in the TAACCCT program?**

Administrative/Clerical

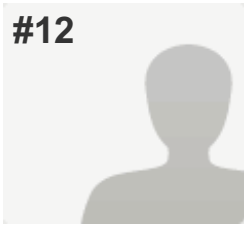
**Q24: Please use the space below for any additional comments.**

*Respondent skipped this question*

**Q25: Optional to include your name and contact information**

*Respondent skipped this question*

#12



**COMPLETE**

**Collector:** Web Link (Web Link)  
**Started:** Tuesday, September 09, 2014 1:58:18 PM  
**Last Modified:** Tuesday, September 09, 2014 2:03:54 PM  
**Time Spent:** 00:05:35  
**IP Address:** 192.112.54.2

PAGE 2

**Q1: How long have you been using the JobTrakPA platform?** 1-3 years

PAGE 3

**Q2: How often do you use the JobTrakPA platform?** Less than once a month

**Q3: Did you participate in the Empyra/Monster training for the TAACCCT online platform?** Yes

PAGE 4

**Q4: Which 2013 training session did you attend?** Reading

**Q5: Please rate your responses about Empyra's Job Trak PA online platform training.**

Training met my expectations	Disagree
The information shared was new to me	Agree
The session objectives were identified and followed	Agree
The content was organized and easy to follow	Agree
The training materials were useful	Agree
The trainer was knowledgeable	Disagree
The trainer was prepared	Disagree
Participation and interaction were encouraged	Agree

**Q6: Overall how would you rate the Empyra training for JobTrak PA online platform?** Mildly good

**Q7: Please use the space below for any additional comments.**

The training session could have been shorter by an hour and we would have left as informed as we did.

**Q8: Did you participate in JobTrakPA online platform training with TAACCCT Grant Administration?** No

PAGE 5

**Q9: Please rate your training experience with TAACCCT Administrative Team.** *Respondent skipped this question*

**Q10: Overall how do you rate the training with the TAACCCT Grant Administration Team?** *Respondent skipped this question*

**Q11: Please use the space below for any additional comments.** *Respondent skipped this question*

PAGE 6

**Q12: How satisfied are you with the following features of the JobTrak PA online platform?**

Log in	Very satisfied
Entering student information	Somewhat satisfied
Updating student information	Somewhat satisfied
Locating students	Somewhat satisfied
Resume builder	Very dissatisfied
Adding events	Did not use this feature
Network group site area	Did not use this feature
Creating communication from the system	Did not use this feature
Sending communication from the system	Did not use this feature
Printing from the system	Did not use this feature
Creating reports	Did not use this feature
Accessing and using forms (i.e. training application)	Did not use this feature
Help functions	Did not use this feature
Adding funding to student records	Somewhat satisfied
Adding training programs to student records	Very satisfied
Updating student records	Very satisfied
Self service student portal (i.e. job search, email)	Did not use this feature

**Q13: Do you use the JobTrakPA platform to connect to participants?** No

**PAGE 7**

**Q14: Which if any, of the following features do you use with your program participants? (Check all that apply)**

*Respondent skipped this question*

**Q15: If no, how do you connect to program participants?**


Telephone, email and class visits.

**PAGE 8**

<b>Q16: Have you encountered any technical issues when using the JobTrakPA online platform?</b>	No
---	----

PAGE 9

<b>Q17: How often do you encounter technical problems when using the system?</b>	<i>Respondent skipped this question</i>
<b>Q18: Have the technical problems you encountered impacted your ability to: (Please check all that apply)</b>	<i>Respondent skipped this question</i>
<b>Q19: How would you typically resolve your technical problems? (Check all that apply.)</b>	<i>Respondent skipped this question</i>
<b>Q20: How quickly were your technical problems resolved?</b>	<i>Respondent skipped this question</i>
<b>Q21: Overall, how would you rate the usefulness of the JobTrakPA online platform as a data management system for PA TAACCCT Consortium?</b>	Somewhat useful
<b>Q22: Which college are you from?</b>	Bucks
<b>Q23: Which best describes your position in the TAACCCT program?</b>	Career Coach
<b>Q24: Please use the space below for any additional comments.</b>	<i>Respondent skipped this question</i>
<b>Q25: Optional to include your name and contact information</b>	<i>Respondent skipped this question</i>

<p><b>#13</b></p> 	<p><b>COMPLETE</b></p> <p><b>Collector:</b> Web Link (Web Link)  <b>Started:</b> Tuesday, September 09, 2014 1:55:15 PM  <b>Last Modified:</b> Tuesday, September 09, 2014 2:05:01 PM  <b>Time Spent:</b> 00:09:45  <b>IP Address:</b> 192.112.54.2</p>
---	---

PAGE 2

<b>Q1: How long have you been using the JobTrakPA platform?</b>	1-3 years
---	-----------

PAGE 3

<b>Q2: How often do you use the JobTrakPA platform?</b>	1 time per month
<b>Q3: Did you participate in the Empyra/Monster training for the TAACCCT online platform?</b>	Yes

PAGE 4

<b>Q4: Which 2013 training session did you attend?</b>	Other (please specify), Other (please specify) Neither Training Session attended.
<b>Q5: Please rate your responses about Empyra's Job Trak PA online platform training.</b>	
Training met my expectations	Agree
The information shared was new to me	Agree
The session objectives were identified and followed	Agree
The content was organized and easy to follow	Agree
The training materials were useful	Agree
The trainer was knowledgeable	Agree
The trainer was prepared	Agree
Participation and interaction were encouraged	Agree
<b>Q6: Overall how would you rate the Empyra training for JobTrak PA online platform?</b>	Not good at all
<b>Q7: Please use the space below for any additional comments.</b>	
Megan came to Bucks and gave us an abbreviated, personal version of the training. Only answered questions 5 & 6 because I couldn't move on without answering.	
<b>Q8: Did you participate in JobTrakPA online platform training with TAACCCT Grant Administration?</b>	Yes

PAGE 5



**Q9: Please rate your training experience with TAACCCT Administrative Team.**

Training met my expectations	Agree
The information shared was new to me	Agree
The session objectives were identified and followed	Agree
The content was organized and easy to follow	Agree
The training materials were useful	Agree
The trainer was knowledgeable	Agree
The trainer was prepared	Agree

---

**Q10: Overall how do you rate the training with the TAACCCT Grant Administration Team?** Good

---

**Q11: Please use the space below for any additional comments.** *Respondent skipped this question*

**Q12: How satisfied are you with the following features of the JobTrak PA online platform?**

Log in	Very satisfied
Entering student information	Somewhat dissatisfied
Updating student information	Somewhat satisfied
Locating students	Somewhat satisfied
Resume builder	Did not use this feature
Adding events	Did not use this feature
Network group site area	Did not use this feature
Creating communication from the system	Did not use this feature
Sending communication from the system	Did not use this feature
Printing from the system	Very dissatisfied
Creating reports	Very dissatisfied
Accessing and using forms (i.e. training application)	Did not use this feature
Help functions	Did not use this feature
Adding funding to student records	Somewhat satisfied
Adding training programs to student records	Somewhat satisfied
Updating student records	Somewhat satisfied
Self service student portal (i.e. job search, email)	Did not use this feature

**Q13: Do you use the JobTrakPA platform to connect to participants?** No

**PAGE 7**

**Q14: Which if any, of the following features do you use with your program participants? (Check all that apply)**

*Respondent skipped this question*

**Q15: If no, how do you connect to program participants?**

Phone and email

**PAGE 8**

**Q16: Have you encountered any technical issues when using the JobTrakPA online platform?** Yes

## PAGE 9

**Q17: How often do you encounter technical problems when using the system?** 25% -- 1 out of 4 times,  
Please describe the technical problems you encountered  
Duplicates, and being blocked from accessing students records.

**Q18: Have the technical problems you encountered impacted your ability to: (Please check all that apply)** Enter data into system, Be productive,  
Retrieve data

**Q19: How would you typically resolve your technical problems? (Check all that apply.)** Call TAACCCT Grant Administration,  
Send an email to TAACCCT Administration

**Q20: How quickly were your technical problems resolved?** Quite quickly

**Q21: Overall, how would you rate the usefulness of the JobTrakPA online platform as a data management system for PA TAACCCT Consortium?** Not very useful

**Q22: Which college are you from?** Bucks

**Q23: Which best describes your position in the TAACCCT program?** Career Coach

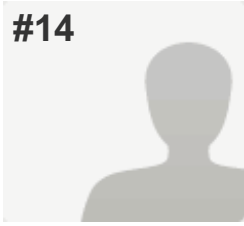
**Q24: Please use the space below for any additional comments.**

The program was being updated and changed early on and by the time it became a whole program, it was too late into the grant. Also, program forms did not follow the actual forms so data entry was cumbersome and inefficient.

**Q25: Optional to include your name and contact information**

Name	Denise Glick
College	Bucks
Position	Career Coach
Email address	denise.glick@bucks.edu
Telephone number	215-497-8779

#14



**INCOMPLETE**

**Collector:** Web Link (Web Link)  
**Started:** Tuesday, September 09, 2014 2:05:30 PM  
**Last Modified:** Tuesday, September 09, 2014 2:12:51 PM  
**Time Spent:** 00:07:20  
**IP Address:** 162.223.16.106

PAGE 2

<b>Q1: How long have you been using the JobTrakPA platform?</b>	Never
---	-------

PAGE 3

<b>Q2: How often do you use the JobTrakPA platform?</b>	<i>Respondent skipped this question</i>
<b>Q3: Did you participate in the Empyra/Monster training for the TAACCCT online platform?</b>	No

PAGE 4

<b>Q4: Which 2013 training session did you attend?</b>	<i>Respondent skipped this question</i>
<b>Q5: Please rate your responses about Empyra's Job Trak PA online platform training.</b>	<i>Respondent skipped this question</i>
<b>Q6: Overall how would you rate the Empyra training for JobTrak PA online platform?</b>	<i>Respondent skipped this question</i>
<b>Q7: Please use the space below for any additional comments.</b>	<i>Respondent skipped this question</i>
<b>Q8: Did you participate in JobTrakPA online platform training with TAACCCT Grant Administration?</b>	No

PAGE 5

<b>Q9: Please rate your training experience with TAACCCT Administrative Team.</b>	<i>Respondent skipped this question</i>
<b>Q10: Overall how do you rate the training with the TAACCCT Grant Administration Team?</b>	<i>Respondent skipped this question</i>
<b>Q11: Please use the space below for any additional comments.</b>	<i>Respondent skipped this question</i>

**PAGE 6**

<b>Q12: How satisfied are you with the following features of the JobTrak PA online platform?</b>	
Log in	Very satisfied
Entering student information	Did not use this feature
Updating student information	Did not use this feature
Locating students	Did not use this feature
Resume builder	Did not use this feature
Adding events	Did not use this feature
Network group site area	Did not use this feature
Creating communication from the system	Did not use this feature
Sending communication from the system	Did not use this feature
Printing from the system	Did not use this feature
Creating reports	Did not use this feature
Accessing and using forms (i.e. training application)	Did not use this feature
Help functions	Did not use this feature
Adding funding to student records	Did not use this feature
Adding training programs to student records	Did not use this feature
Updating student records	Did not use this feature
Self service student portal (i.e. job search, email)	Did not use this feature
<b>Q13: Do you use the JobTrakPA platform to connect to participants?</b>	No

**PAGE 7**

<p><b>Q14: Which if any, of the following features do you use with your program participants? (Check all that apply)</b></p>	<p><i>Respondent skipped this question</i></p>
<p><b>Q15: If no, how do you connect to program participants?</b></p>	<p><i>Respondent skipped this question</i></p>

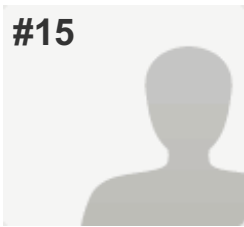
PAGE 8

<p><b>Q16: Have you encountered any technical issues when using the JobTrakPA online platform?</b></p>	<p>No</p>
--	-----------

PAGE 9

<p><b>Q17: How often do you encounter technical problems when using the system?</b></p>	<p><i>Respondent skipped this question</i></p>
<p><b>Q18: Have the technical problems you encountered impacted your ability to: (Please check all that apply)</b></p>	<p><i>Respondent skipped this question</i></p>
<p><b>Q19: How would you typically resolve your technical problems? (Check all that apply.)</b></p>	<p><i>Respondent skipped this question</i></p>
<p><b>Q20: How quickly were your technical problems resolved?</b></p>	<p><i>Respondent skipped this question</i></p>
<p><b>Q21: Overall, how would you rate the usefulness of the JobTrakPA online platform as a data management system for PA TAACCCT Consortium?</b></p>	<p>Not very useful</p>
<p><b>Q22: Which college are you from?</b></p>	<p>Philadelphia</p>
<p><b>Q23: Which best describes your position in the TAACCCT program?</b></p>	<p>Administrator</p>
<p><b>Q24: Please use the space below for any additional comments.</b></p>	<p><i>Respondent skipped this question</i></p>
<p><b>Q25: Optional to include your name and contact information</b></p>	<p><i>Respondent skipped this question</i></p>

#15



**COMPLETE**

**Collector:** Web Link (Web Link)  
**Started:** Tuesday, September 09, 2014 5:04:26 PM  
**Last Modified:** Tuesday, September 09, 2014 5:49:04 PM  
**Time Spent:** 00:44:38  
**IP Address:** 50.164.45.107

PAGE 2

**Q1: How long have you been using the JobTrakPA platform?** 1-3 years

PAGE 3

**Q2: How often do you use the JobTrakPA platform?** 2 - 3 times per month

**Q3: Did you participate in the Empyra/Monster training for the TAACCCT online platform?** Yes

PAGE 4

**Q4: Which 2013 training session did you attend?** Reading,  
 Other (please specify)  
 Also trained at CCP in beginning of grant

**Q5: Please rate your responses about Empyra's Job Trak PA online platform training.**

Training met my expectations	Agree
The information shared was new to me	Strongly Agree
The session objectives were identified and followed	Agree
The content was organized and easy to follow	Agree
The training materials were useful	Agree
The trainer was knowledgeable	Agree
The trainer was prepared	Strongly Agree
Participation and interaction were encouraged	Agree

**Q6: Overall how would you rate the Empyra training for JobTrak PA online platform?** Very Good

**Q7: Please use the space below for any additional comments.**

CCP first training presenter seemed more knowledgeable on computer programs. Reading training was a little harder for me to keep up and follow, but we arrived a little late due to getting mixed up on where to park and taking a wrong turn getting there.

**Q8: Did you participate in JobTrakPA online platform training with TAACCCT Grant Administration?** No

PAGE 5

**Q9: Please rate your training experience with TAACCCT Administrative Team.**

*Respondent skipped this question*

**Q10: Overall how do you rate the training with the TAACCCT Grant Administration Team?**

*Respondent skipped this question*

**Q11: Please use the space below for any additional comments.**

Problems I had with the platform seemed to have cleared up. Lately, I have no problems.

Previous data entered seems to have disappeared and now I have to go back and re-enter information in the participant's profile that was previously entered.

PAGE 6



**Q12: How satisfied are you with the following features of the JobTrak PA online platform?**

Log in	Very satisfied
Entering student information	Somewhat satisfied
Updating student information	Very satisfied
Locating students	Somewhat dissatisfied
Resume builder	Did not use this feature
Adding events	Did not use this feature
Network group site area	Did not use this feature
Creating communication from the system	Did not use this feature
Sending communication from the system	Did not use this feature
Printing from the system	Did not use this feature
Creating reports	Did not use this feature
Accessing and using forms (i.e. training application)	Did not use this feature
Help functions	Did not use this feature
Adding funding to student records	Very dissatisfied
Adding training programs to student records	Somewhat satisfied
Updating student records	Did not use this feature
Self service student portal (i.e. job search, email)	Did not use this feature

**Q13: Do you use the JobTrakPA platform to connect to participants?** No

**PAGE 7**

**Q14: Which if any, of the following features do you use with your program participants? (Check all that apply)**

*Respondent skipped this question*

**Q15: If no, how do you connect to program participants?**

In person during class (coaches provide skills identification, job search/interviewing and resume development training and/or to collect TAACCCT documentation) or during their lunch break from class for follow-up, at CareerLink, scheduled appointments, Outlook email.

**PAGE 8**

**Q16: Have you encountered any technical issues when using the JobTrakPA online platform?** Yes

## PAGE 9

**Q17: How often do you encounter technical problems when using the system?**

25% -- 1 out of 4 times,

Please describe the technical problems you encountered

Used to be more. Sometimes not all parts of the system would be there - couldn't get into the individual sections to enter or update information. Couldn't find some students by name, but could by social security number. Sometimes it's just confusing as to what is going on. As I said before, I'm not experiencing as many problems now. Pretty good now.

**Q18: Have the technical problems you encountered impacted your ability to: (Please check all that apply)**

Enter data into system, Be productive,  
Retrieve data

**Q19: How would you typically resolve your technical problems? (Check all that apply.)**

Reboot, Call TAACCCT Grant Administration,  
Other,  
Other (please specify)  
Use different browser. Do something else then come back to it another time.

**Q20: How quickly were your technical problems resolved?**

Slightly quickly,

Additional comments

I have been delayed in getting information completed and accurate in the platform and kept up to date because the process is slow. My main issue is having to check every single person again to make sure what I already entered is not missing. That is extremely timely since I alone have served over 200 individuals.

**Q21: Overall, how would you rate the usefulness of the JobTrakPA online platform as a data management system for PA TAACCCT Consortium?**

Somewhat useful

**Q22: Which college are you from?**

Harrisburg

**Q23: Which best describes your position in the TAACCCT program?**

Career Coach

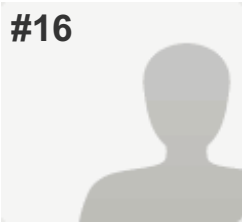
**Q24: Please use the space below for any additional comments.**

*Respondent skipped this question*

**Q25: Optional to include your name and contact information**

Name	Karen Buck
College	HACC
Position	Career Coach
Email address	kbbuck@hacc.edu
Telephone number	717-920-1904

#16



**COMPLETE**

**Collector:** Web Link (Web Link)  
**Started:** Monday, September 15, 2014 9:49:47 AM  
**Last Modified:** Monday, September 15, 2014 9:54:21 AM  
**Time Spent:** 00:04:34  
**IP Address:** 162.51.33.201

PAGE 2

**Q1: How long have you been using the JobTrakPA platform?** 1-3 years

PAGE 3

**Q2: How often do you use the JobTrakPA platform?** Less than once a month

**Q3: Did you participate in the Empyra/Monster training for the TAACCCT online platform?** Yes

PAGE 4

**Q4: Which 2013 training session did you attend?** Allegheny

**Q5: Please rate your responses about Empyra's Job Trak PA online platform training.**

Training met my expectations	Strongly Disagree
The information shared was new to me	Disagree
The session objectives were identified and followed	Agree
The content was organized and easy to follow	Strongly Disagree
The training materials were useful	Strongly Disagree
The trainer was knowledgeable	Strongly Disagree
The trainer was prepared	Strongly Disagree
Participation and interaction were encouraged	Strongly Disagree

**Q6: Overall how would you rate the Empyra training for JobTrak PA online platform?** Not good at all

**Q7: Please use the space below for any additional comments.** *Respondent skipped this question*

**Q8: Did you participate in JobTrakPA online platform training with TAACCCT Grant Administration?** Yes

PAGE 5

**Q9: Please rate your training experience with TAACCCT Administrative Team.**

Training met my expectations	Disagree
The information shared was new to me	Disagree
The session objectives were identified and followed	Disagree
The content was organized and easy to follow	Disagree
The training materials were useful	Disagree
The trainer was knowledgeable	Agree
The trainer was prepared	Agree

**Q10: Overall how do you rate the training with the TAACCCT Grant Administration Team?** Poor

**Q11: Please use the space below for any additional comments.** *Respondent skipped this question*

PAGE 6

**Q12: How satisfied are you with the following features of the JobTrak PA online platform?**

Log in	Somewhat satisfied
Entering student information	Very dissatisfied
Updating student information	Very dissatisfied
Locating students	Very dissatisfied
Resume builder	Very dissatisfied
Adding events	Very dissatisfied
Network group site area	Very dissatisfied
Creating communication from the system	Very dissatisfied
Sending communication from the system	Very dissatisfied
Printing from the system	Very dissatisfied
Creating reports	Very dissatisfied
Accessing and using forms (i.e. training application)	Very dissatisfied
Help functions	Very dissatisfied
Adding funding to student records	Very dissatisfied
Adding training programs to student records	Very dissatisfied
Updating student records	Very dissatisfied
Self service student portal (i.e. job search, email)	Very dissatisfied

---

**Q13: Do you use the JobTrakPA platform to connect to participants?** No

PAGE 7

**Q14: Which if any, of the following features do you use with your program participants? (Check all that apply)** *Respondent skipped this question*

---

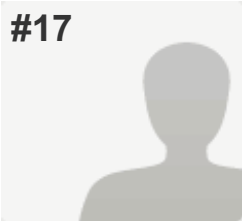
**Q15: If no, how do you connect to program participants?**  
 Face to face. Student do not use JobTrakPA platform because it serves NO purpose.

PAGE 8

<b>Q16: Have you encountered any technical issues when using the JobTrakPA online platform?</b>	Yes
---	-----

PAGE 9

<b>Q17: How often do you encounter technical problems when using the system?</b>	50% -- 2 out of 4 times
<b>Q18: Have the technical problems you encountered impacted your ability to: (Please check all that apply)</b>	Enter data into system, Be productive
<b>Q19: How would you typically resolve your technical problems? (Check all that apply.)</b>	Other, Other (please specify) Wait for it to go back online.
<b>Q20: How quickly were your technical problems resolved?</b>	Not at all quickly
<b>Q21: Overall, how would you rate the usefulness of the JobTrakPA online platform as a data management system for PA TAACCCT Consortium?</b>	Not useful at all
<b>Q22: Which college are you from?</b>	Allegheny
<b>Q23: Which best describes your position in the TAACCCT program?</b>	Career Coach
<b>Q24: Please use the space below for any additional comments.</b>	<i>Respondent skipped this question</i>
<b>Q25: Optional to include your name and contact information</b>	<i>Respondent skipped this question</i>

<p><b>#17</b></p> 	<p><b>COMPLETE</b></p> <p><b>Collector:</b> Web Link (Web Link)  <b>Started:</b> Monday, September 15, 2014 12:24:08 PM  <b>Last Modified:</b> Monday, September 15, 2014 12:30:17 PM  <b>Time Spent:</b> 00:06:08  <b>IP Address:</b> 162.223.16.106</p>
--	---

PAGE 2

<b>Q1: How long have you been using the JobTrakPA platform?</b>	1-3 years
---	-----------

## PAGE 3

<b>Q2: How often do you use the JobTrakPA platform?</b>	2 - 3 times per month
---	-----------------------

<b>Q3: Did you participate in the Emyra/Monster training for the TAACCCT online platform?</b>	No
---	----

## PAGE 4

<b>Q4: Which 2013 training session did you attend?</b>	<i>Respondent skipped this question</i>
--	---

<b>Q5: Please rate your responses about Emyra's Job Trak PA online platform training.</b>	<i>Respondent skipped this question</i>
---	---

<b>Q6: Overall how would you rate the Emyra training for JobTrak PA online platform?</b>	<i>Respondent skipped this question</i>
--	---

<b>Q7: Please use the space below for any additional comments.</b>	<i>Respondent skipped this question</i>
--	---

<b>Q8: Did you participate in JobTrakPA online platform training with TAACCCT Grant Administration?</b>	No
---	----

## PAGE 5

<b>Q9: Please rate your training experience with TAACCCT Administrative Team.</b>	<i>Respondent skipped this question</i>
---	---

<b>Q10: Overall how do you rate the training with the TAACCCT Grant Administration Team?</b>	<i>Respondent skipped this question</i>
--	---

<b>Q11: Please use the space below for any additional comments.</b>	<i>Respondent skipped this question</i>
---	---

## PAGE 6

**Q12: How satisfied are you with the following features of the JobTrak PA online platform?**

Log in	Very satisfied
Entering student information	Somewhat satisfied
Updating student information	Somewhat satisfied
Locating students	Somewhat satisfied
Resume builder	Did not use this feature
Adding events	Did not use this feature
Network group site area	Did not use this feature
Creating communication from the system	Did not use this feature
Sending communication from the system	Did not use this feature
Printing from the system	Very satisfied
Creating reports	Did not use this feature
Accessing and using forms (i.e. training application)	Did not use this feature
Help functions	Did not use this feature
Adding funding to student records	Did not use this feature
Adding training programs to student records	Did not use this feature
Updating student records	Very satisfied
Self service student portal (i.e. job search, email)	Did not use this feature

**Q13: Do you use the JobTrakPA platform to connect to participants?** No

**PAGE 7**

**Q14: Which if any, of the following features do you use with your program participants? (Check all that apply)**

*Respondent skipped this question*

**Q15: If no, how do you connect to program participants?**

via work e-mail, phone, or in person.

**PAGE 8**

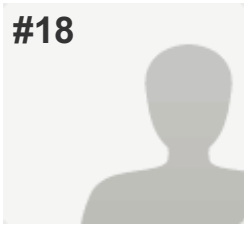


<b>Q16: Have you encountered any technical issues when using the JobTrakPA online platform?</b>	Yes
---	-----

PAGE 9

<b>Q17: How often do you encounter technical problems when using the system?</b>	25% -- 1 out of 4 times, Please describe the technical problems you encountered Date entered switches backwards and must manually correct.
<b>Q18: Have the technical problems you encountered impacted your ability to: (Please check all that apply)</b>	Other (please specify), Other (please specify) extra data entering to correct date of casenote.
<b>Q19: How would you typically resolve your technical problems? (Check all that apply.)</b>	Other, Other (please specify) Make correction by re-entering the date
<b>Q20: How quickly were your technical problems resolved?</b>	Additional comments N/A
<b>Q21: Overall, how would you rate the usefulness of the JobTrakPA online platform as a data management system for PA TAACCCT Consortium?</b>	Somewhat useful
<b>Q22: Which college are you from?</b>	Philadelphia
<b>Q23: Which best describes your position in the TAACCCT program?</b>	Job Developer
<b>Q24: Please use the space below for any additional comments.</b>	<i>Respondent skipped this question</i>
<b>Q25: Optional to include your name and contact information</b>	
Name	Wanda D. Gibson
College	CCP
Position	Job Developer
Email address	wdgibson@ccp.edu
Telephone number	267 299-5895

#18



**COMPLETE**

**Collector:** Web Link (Web Link)  
**Started:** Monday, September 15, 2014 12:28:25 PM  
**Last Modified:** Monday, September 15, 2014 12:36:45 PM  
**Time Spent:** 00:08:20  
**IP Address:** 209.50.138.253

PAGE 2

<b>Q1: How long have you been using the JobTrakPA platform?</b>	6 months - 1 year
---	-------------------

PAGE 3

<b>Q2: How often do you use the JobTrakPA platform?</b>	1 time per month
<b>Q3: Did you participate in the Empyra/Monster training for the TAACCCT online platform?</b>	No

PAGE 4

<b>Q4: Which 2013 training session did you attend?</b>	<i>Respondent skipped this question</i>
<b>Q5: Please rate your responses about Empyra's Job Trak PA online platform training.</b>	<i>Respondent skipped this question</i>
<b>Q6: Overall how would you rate the Empyra training for JobTrak PA online platform?</b>	<i>Respondent skipped this question</i>
<b>Q7: Please use the space below for any additional comments.</b>	<i>Respondent skipped this question</i>
<b>Q8: Did you participate in JobTrakPA online platform training with TAACCCT Grant Administration?</b>	Yes

PAGE 5

**Q9: Please rate your training experience with TAACCCT Administrative Team.**

Training met my expectations	Strongly agree
The information shared was new to me	Strongly agree
The session objectives were identified and followed	Strongly agree
The content was organized and easy to follow	Strongly agree
The training materials were useful	Strongly agree
The trainer was knowledgeable	Strongly agree
The trainer was prepared	Strongly agree

---

**Q10: Overall how do you rate the training with the TAACCCT Grant Administration Team?**      Excellent

---

**Q11: Please use the space below for any additional comments.**      *Respondent skipped this question*

**Q12: How satisfied are you with the following features of the JobTrak PA online platform?**

Log in	Very satisfied
Entering student information	Very satisfied
Updating student information	Very satisfied
Locating students	Very satisfied
Resume builder	Did not use this feature
Adding events	Did not use this feature
Network group site area	Did not use this feature
Creating communication from the system	Did not use this feature
Sending communication from the system	Did not use this feature
Printing from the system	Did not use this feature
Creating reports	Somewhat dissatisfied
Accessing and using forms (i.e. training application)	Very satisfied
Help functions	Did not use this feature
Adding funding to student records	Very satisfied
Adding training programs to student records	Very satisfied
Updating student records	Very satisfied
Self service student portal (i.e. job search, email)	Did not use this feature

**Q13: Do you use the JobTrakPA platform to connect to participants?** Yes

**PAGE 7**

**Q14: Which if any, of the following features do you use with your program participants? (Check all that apply)** Follow up

**Q15: If no, how do you connect to program participants?** *Respondent skipped this question*


**PAGE 8**

<b>Q16: Have you encountered any technical issues when using the JobTrakPA online platform?</b>	No
---	----

PAGE 9

<b>Q17: How often do you encounter technical problems when using the system?</b>	<i>Respondent skipped this question</i>
<b>Q18: Have the technical problems you encountered impacted your ability to: (Please check all that apply)</b>	<i>Respondent skipped this question</i>
<b>Q19: How would you typically resolve your technical problems? (Check all that apply.)</b>	<i>Respondent skipped this question</i>
<b>Q20: How quickly were your technical problems resolved?</b>	<i>Respondent skipped this question</i>
<b>Q21: Overall, how would you rate the usefulness of the JobTrakPA online platform as a data management system for PA TAACCCT Consortium?</b>	Extremely useful
<b>Q22: Which college are you from?</b>	Lehigh
<b>Q23: Which best describes your position in the TAACCCT program?</b>	Administrative/Clerical
<b>Q24: Please use the space below for any additional comments.</b>	<i>Respondent skipped this question</i>
<b>Q25: Optional to include your name and contact information</b>	
Name	Kescha Bell-Ross
College	Lehigh Carbon Community College
Position	Data Support
Email address	kbellross@lccc.edu
Telephone number	610-799-1779

**#19**



**COMPLETE**

**Collector:** Web Link (Web Link)  
**Started:** Monday, September 15, 2014 12:30:24 PM  
**Last Modified:** Monday, September 15, 2014 12:37:54 PM  
**Time Spent:** 00:07:29  
**IP Address:** 204.108.244.86

## PAGE 2

<b>Q1: How long have you been using the JobTrakPA platform?</b>	1-3 years
---	-----------

## PAGE 3

<b>Q2: How often do you use the JobTrakPA platform?</b>	2 - 3 times per month
---	-----------------------

<b>Q3: Did you participate in the Empyra/Monster training for the TAACCCT online platform?</b>	No
--	----

## PAGE 4

<b>Q4: Which 2013 training session did you attend?</b>	<i>Respondent skipped this question</i>
--	---

<b>Q5: Please rate your responses about Empyra's Job Trak PA online platform training.</b>	<i>Respondent skipped this question</i>
--	---

<b>Q6: Overall how would you rate the Empyra training for JobTrak PA online platform?</b>	<i>Respondent skipped this question</i>
---	---

<b>Q7: Please use the space below for any additional comments.</b>	<i>Respondent skipped this question</i>
--	---

<b>Q8: Did you participate in JobTrakPA online platform training with TAACCCT Grant Administration?</b>	No
---	----

## PAGE 5

<b>Q9: Please rate your training experience with TAACCCT Administrative Team.</b>	<i>Respondent skipped this question</i>
---	---

<b>Q10: Overall how do you rate the training with the TAACCCT Grant Administration Team?</b>	<i>Respondent skipped this question</i>
--	---

<b>Q11: Please use the space below for any additional comments.</b>	<i>Respondent skipped this question</i>
---	---

PAGE 6

**Q12: How satisfied are you with the following features of the JobTrak PA online platform?**

Log in	Very satisfied
Entering student information	Somewhat satisfied
Updating student information	Very satisfied
Locating students	Somewhat satisfied
Resume builder	Did not use this feature
Adding events	Did not use this feature
Network group site area	Did not use this feature
Creating communication from the system	Did not use this feature
Sending communication from the system	Did not use this feature
Printing from the system	Did not use this feature
Creating reports	Did not use this feature
Accessing and using forms (i.e. training application)	Did not use this feature
Help functions	Did not use this feature
Adding funding to student records	Very satisfied
Adding training programs to student records	Very satisfied
Updating student records	Somewhat satisfied
Self service student portal (i.e. job search, email)	Did not use this feature

**Q13: Do you use the JobTrakPA platform to connect to participants?** No

PAGE 7

**Q14: Which if any, of the following features do you use with your program participants? (Check all that apply)** *Respondent skipped this question*

**Q15: If no, how do you connect to program participants?**


Telephone, email, face-to-face at class location or in the office.

PAGE 8

<b>Q16: Have you encountered any technical issues when using the JobTrakPA online platform?</b>	Yes
---	-----

PAGE 9

<b>Q17: How often do you encounter technical problems when using the system?</b>	25% -- 1 out of 4 times ,  Please describe the technical problems you encountered I encountered some technical problems early on, but they have all been resolved.
<b>Q18: Have the technical problems you encountered impacted your ability to: (Please check all that apply)</b>	Enter data into system
<b>Q19: How would you typically resolve your technical problems? (Check all that apply.)</b>	Call TAACCCT Grant Administration
<b>Q20: How quickly were your technical problems resolved?</b>	Moderately quickly
<b>Q21: Overall, how would you rate the usefulness of the JobTrakPA online platform as a data management system for PA TAACCCT Consortium?</b>	Somewhat useful
<b>Q22: Which college are you from?</b>	Delaware
<b>Q23: Which best describes your position in the TAACCCT program?</b>	Career Coach
<b>Q24: Please use the space below for any additional comments.</b>	<i>Respondent skipped this question</i>
<b>Q25: Optional to include your name and contact information</b>	<i>Respondent skipped this question</i>

<b>#20</b>		<b>INCOMPLETE</b>	<b>Collector:</b> Web Link (Web Link) <b>Started:</b> Monday, September 15, 2014 12:57:07 PM <b>Last Modified:</b> Monday, September 15, 2014 12:59:18 PM <b>Time Spent:</b> 00:02:10 <b>IP Address:</b> 192.112.54.2
------------	---	-------------------	---



## PAGE 2

<b>Q1: How long have you been using the JobTrakPA platform?</b>	1-3 years
---	-----------

## PAGE 3

<b>Q2: How often do you use the JobTrakPA platform?</b>	Less than once a month
---	------------------------

<b>Q3: Did you participate in the Empyra/Monster training for the TAACCCT online platform?</b>	Yes
--	-----

## PAGE 4

<b>Q4: Which 2013 training session did you attend?</b>	Reading
--	---------

**Q5: Please rate your responses about Empyra's Job Trak PA online platform training.**

Training met my expectations	Disagree
------------------------------	----------

The information shared was new to me	Agree
--------------------------------------	-------

The session objectives were identified and followed	Disagree
---	----------

The content was organized and easy to follow	Disagree
--	----------

The training materials were useful	Disagree
------------------------------------	----------

The trainer was knowledgeable	Agree
-------------------------------	-------

The trainer was prepared	Disagree
--------------------------	----------

Participation and interaction were encouraged	Agree
---	-------

<b>Q6: Overall how would you rate the Empyra training for JobTrak PA online platform?</b>	Mildly good
---	-------------

<b>Q7: Please use the space below for any additional comments.</b>	<i>Respondent skipped this question</i>
--	---

<b>Q8: Did you participate in JobTrakPA online platform training with TAACCCT Grant Administration?</b>	No
---	----

## PAGE 5

**Q9: Please rate your training experience with TAACCCT Administrative Team.**

*Respondent skipped this question*

**Q10: Overall how do you rate the training with the TAACCCT Grant Administration Team?**

*Respondent skipped this question*

**Q11: Please use the space below for any additional comments.**

*Respondent skipped this question*

**PAGE 6**

**Q12: How satisfied are you with the following features of the JobTrak PA online platform?**

*Respondent skipped this question*

**Q13: Do you use the JobTrakPA platform to connect to participants?**

*Respondent skipped this question*

**PAGE 7**

**Q14: Which if any, of the following features do you use with your program participants? (Check all that apply)**

*Respondent skipped this question*

**Q15: If no, how do you connect to program participants?**

*Respondent skipped this question*

**PAGE 8**

**Q16: Have you encountered any technical issues when using the JobTrakPA online platform?**

*Respondent skipped this question*

**PAGE 9**

**Q17: How often do you encounter technical problems when using the system?**


*Respondent skipped this question*

**Q18: Have the technical problems you encountered impacted your ability to: (Please check all that apply)**

*Respondent skipped this question*

<b>Q19: How would you typically resolve your technical problems? (Check all that apply.)</b>	<i>Respondent skipped this question</i>
<b>Q20: How quickly were your technical problems resolved?</b>	<i>Respondent skipped this question</i>
<b>Q21: Overall, how would you rate the usefulness of the JobTrakPA online platform as a data management system for PA TAACCCT Consortium?</b>	<i>Respondent skipped this question</i>
<b>Q22: Which college are you from?</b>	<i>Respondent skipped this question</i>
<b>Q23: Which best describes your position in the TAACCCT program?</b>	<i>Respondent skipped this question</i>
<b>Q24: Please use the space below for any additional comments.</b>	<i>Respondent skipped this question</i>
<b>Q25: Optional to include your name and contact information</b>	<i>Respondent skipped this question</i>

**#21**



**COMPLETE**

**Collector:** Web Link (Web Link)  
**Started:** Monday, September 15, 2014 1:18:19 PM  
**Last Modified:** Monday, September 15, 2014 1:20:18 PM  
**Time Spent:** 00:01:58  
**IP Address:** 67.208.164.86

PAGE 2

<b>Q1: How long have you been using the JobTrakPA platform?</b>	6 months - 1 year
---	-------------------

PAGE 3

<b>Q2: How often do you use the JobTrakPA platform?</b>	Less than once a month
<b>Q3: Did you participate in the Empyra/Monster training for the TAACCCT online platform?</b>	No

PAGE 4

<b>Q4: Which 2013 training session did you attend?</b>	<i>Respondent skipped this question</i>
<b>Q5: Please rate your responses about Empyra's Job Trak PA online platform training.</b>	<i>Respondent skipped this question</i>
<b>Q6: Overall how would you rate the Empyra training for JobTrak PA online platform?</b>	<i>Respondent skipped this question</i>
<b>Q7: Please use the space below for any additional comments.</b>	<i>Respondent skipped this question</i>
<b>Q8: Did you participate in JobTrakPA online platform training with TAACCCT Grant Administration?</b>	No

## PAGE 5

<b>Q9: Please rate your training experience with TAACCCT Administrative Team.</b>	<i>Respondent skipped this question</i>
<b>Q10: Overall how do you rate the training with the TAACCCT Grant Administration Team?</b>	<i>Respondent skipped this question</i>
<b>Q11: Please use the space below for any additional comments.</b>	<i>Respondent skipped this question</i>

## PAGE 6

**Q12: How satisfied are you with the following features of the JobTrak PA online platform?**

Log in	Very satisfied
Entering student information	Very satisfied
Updating student information	Very satisfied
Locating students	Somewhat satisfied
Resume builder	Did not use this feature
Adding events	Did not use this feature
Network group site area	Did not use this feature
Creating communication from the system	Did not use this feature
Sending communication from the system	Did not use this feature
Printing from the system	Did not use this feature
Creating reports	Did not use this feature
Accessing and using forms (i.e. training application)	Did not use this feature
Help functions	Did not use this feature
Adding funding to student records	Very satisfied
Adding training programs to student records	Very satisfied
Updating student records	Very satisfied
Self service student portal (i.e. job search, email)	Did not use this feature

**Q13: Do you use the JobTrakPA platform to connect to participants?** No

**PAGE 7**

**Q14: Which if any, of the following features do you use with your program participants? (Check all that apply)**

*Respondent skipped this question*

**Q15: If no, how do you connect to program participants?**

Via e-mail


**PAGE 8**

<b>Q16: Have you encountered any technical issues when using the JobTrakPA online platform?</b>	No
---	----

PAGE 9

<b>Q17: How often do you encounter technical problems when using the system?</b>	<i>Respondent skipped this question</i>
<b>Q18: Have the technical problems you encountered impacted your ability to: (Please check all that apply)</b>	<i>Respondent skipped this question</i>
<b>Q19: How would you typically resolve your technical problems? (Check all that apply.)</b>	<i>Respondent skipped this question</i>
<b>Q20: How quickly were your technical problems resolved?</b>	<i>Respondent skipped this question</i>
<b>Q21: Overall, how would you rate the usefulness of the JobTrakPA online platform as a data management system for PA TAACCCT Consortium?</b>	Extremely useful
<b>Q22: Which college are you from?</b>	Delaware
<b>Q23: Which best describes your position in the TAACCCT program?</b>	Career Coach
<b>Q24: Please use the space below for any additional comments.</b>	<i>Respondent skipped this question</i>
<b>Q25: Optional to include your name and contact information</b>	<i>Respondent skipped this question</i>

**#22**



**INCOMPLETE**

**Collector:** Web Link (Web Link)  
**Started:** Monday, September 15, 2014 1:29:47 PM  
**Last Modified:** Monday, September 15, 2014 1:30:11 PM  
**Time Spent:** 00:00:24  
**IP Address:** 74.43.82.10

PAGE 2

<b>Q1: How long have you been using the JobTrakPA platform?</b>	1-3 years
---	-----------

## PAGE 3

<b>Q2: How often do you use the JobTrakPA platform?</b>	Less than once a month
---	------------------------

<b>Q3: Did you participate in the Empyra/Monster training for the TAACCCT online platform?</b>	Yes
--	-----

## PAGE 4

<b>Q4: Which 2013 training session did you attend?</b>	<i>Respondent skipped this question</i>
--	---

<b>Q5: Please rate your responses about Empyra's Job Trak PA online platform training.</b>	<i>Respondent skipped this question</i>
--	---

<b>Q6: Overall how would you rate the Empyra training for JobTrak PA online platform?</b>	<i>Respondent skipped this question</i>
---	---

<b>Q7: Please use the space below for any additional comments.</b>	<i>Respondent skipped this question</i>
--	---

<b>Q8: Did you participate in JobTrakPA online platform training with TAACCCT Grant Administration?</b>	<i>Respondent skipped this question</i>
---	---

## PAGE 5

<b>Q9: Please rate your training experience with TAACCCT Administrative Team.</b>	<i>Respondent skipped this question</i>
---	---

<b>Q10: Overall how do you rate the training with the TAACCCT Grant Administration Team?</b>	<i>Respondent skipped this question</i>
--	---

<b>Q11: Please use the space below for any additional comments.</b>	<i>Respondent skipped this question</i>
---	---

## PAGE 6

**Q12: How satisfied are you with the following features of the JobTrak PA online platform?**

*Respondent skipped this question*

**Q13: Do you use the JobTrakPA platform to connect to participants?**

*Respondent skipped this question*

**PAGE 7**

**Q14: Which if any, of the following features do you use with your program participants? (Check all that apply)**

*Respondent skipped this question*

**Q15: If no, how do you connect to program participants?**

*Respondent skipped this question*

**PAGE 8**

**Q16: Have you encountered any technical issues when using the JobTrakPA online platform?**

*Respondent skipped this question*

**PAGE 9**

**Q17: How often do you encounter technical problems when using the system?**

*Respondent skipped this question*

**Q18: Have the technical problems you encountered impacted your ability to: (Please check all that apply)**

*Respondent skipped this question*

**Q19: How would you typically resolve your technical problems? (Check all that apply.)**

*Respondent skipped this question*

**Q20: How quickly were your technical problems resolved?**

*Respondent skipped this question*

**Q21: Overall, how would you rate the usefulness of the JobTrakPA online platform as a data management system for PA TAACCCT Consortium?**

*Respondent skipped this question*


**Q22: Which college are you from?**

*Respondent skipped this question*



Q23: Which best describes your position in the TAACCCT program?	<i>Respondent skipped this question</i>
Q24: Please use the space below for any additional comments.	<i>Respondent skipped this question</i>
Q25: Optional to include your name and contact information	<i>Respondent skipped this question</i>

**#23**



**INCOMPLETE**

**Collector:** Web Link (Web Link)  
**Started:** Monday, September 15, 2014 1:28:38 PM  
**Last Modified:** Monday, September 15, 2014 1:30:42 PM  
**Time Spent:** 00:02:03  
**IP Address:** 192.245.50.50

PAGE 2

Q1: How long have you been using the JobTrakPA platform?	less than 6 months
--	--------------------

PAGE 3

Q2: How often do you use the JobTrakPA platform?	Less than once a month
Q3: Did you participate in the Empyra/Monster training for the TAACCCT online platform?	No

PAGE 4

Q4: Which 2013 training session did you attend?	<i>Respondent skipped this question</i>
Q5: Please rate your responses about Empyra's Job Trak PA online platform training.	<i>Respondent skipped this question</i>
Q6: Overall how would you rate the Empyra training for JobTrak PA online platform?	<i>Respondent skipped this question</i>
Q7: Please use the space below for any additional comments.	<i>Respondent skipped this question</i>

<b>Q8: Did you participate in JobTrakPA online platform training with TAACCCT Grant Administration?</b>	No
---	----

PAGE 5

<b>Q9: Please rate your training experience with TAACCCT Administrative Team.</b>	<i>Respondent skipped this question</i>
<b>Q10: Overall how do you rate the training with the TAACCCT Grant Administration Team?</b>	<i>Respondent skipped this question</i>
<b>Q11: Please use the space below for any additional comments.</b>	<i>Respondent skipped this question</i>

PAGE 6

**Q12: How satisfied are you with the following features of the JobTrak PA online platform?**

Log in	Somewhat satisfied
Entering student information	Did not use this feature
Updating student information	Did not use this feature
Locating students	Somewhat satisfied
Resume builder	Did not use this feature
Adding events	Did not use this feature
Network group site area	Did not use this feature
Creating communication from the system	Did not use this feature
Sending communication from the system	Did not use this feature
Printing from the system	Did not use this feature
Creating reports	Did not use this feature
Accessing and using forms (i.e. training application)	Did not use this feature
Help functions	Did not use this feature
Adding funding to student records	Did not use this feature
Adding training programs to student records	Did not use this feature
Updating student records	Did not use this feature
Self service student portal (i.e. job search, email)	Did not use this feature

**Q13: Do you use the JobTrakPA platform to connect to participants?** No

**PAGE 7**

**Q14: Which if any, of the following features do you use with your program participants? (Check all that apply)**

*Respondent skipped this question*

**Q15: If no, how do you connect to program participants?**

*Respondent skipped this question*


**PAGE 8**

<b>Q16: Have you encountered any technical issues when using the JobTrakPA online platform?</b>	No
---	----

PAGE 9

<b>Q17: How often do you encounter technical problems when using the system?</b>	<i>Respondent skipped this question</i>
<b>Q18: Have the technical problems you encountered impacted your ability to: (Please check all that apply)</b>	<i>Respondent skipped this question</i>
<b>Q19: How would you typically resolve your technical problems? (Check all that apply.)</b>	<i>Respondent skipped this question</i>
<b>Q20: How quickly were your technical problems resolved?</b>	<i>Respondent skipped this question</i>
<b>Q21: Overall, how would you rate the usefulness of the JobTrakPA online platform as a data management system for PA TAACCCT Consortium?</b>	Not useful at all
<b>Q22: Which college are you from?</b>	Montgomery
<b>Q23: Which best describes your position in the TAACCCT program?</b>	Job Developer
<b>Q24: Please use the space below for any additional comments.</b>	<i>Respondent skipped this question</i>
<b>Q25: Optional to include your name and contact information</b>	<i>Respondent skipped this question</i>

**#24**



**INCOMPLETE**

**Collector:** Web Link (Web Link)  
**Started:** Monday, September 15, 2014 1:28:36 PM  
**Last Modified:** Monday, September 15, 2014 1:45:30 PM  
**Time Spent:** 00:16:53  
**IP Address:** 24.101.25.254

PAGE 2

<b>Q1: How long have you been using the JobTrakPA platform?</b>	1-3 years
---	-----------

PAGE 3

<b>Q2: How often do you use the JobTrakPA platform?</b>	1 time per month
<b>Q3: Did you participate in the Empyra/Monster training for the TAACCCT online platform?</b>	Yes

PAGE 4

<b>Q4: Which 2013 training session did you attend?</b>	Allegheny
<b>Q5: Please rate your responses about Empyra's Job Trak PA online platform training.</b>	
Training met my expectations	Disagree
The information shared was new to me	Agree
The session objectives were identified and followed	Agree
The content was organized and easy to follow	Disagree
The training materials were useful	Disagree
The trainer was knowledgeable	Agree
The trainer was prepared	Agree
Participation and interaction were encouraged	Agree
<b>Q6: Overall how would you rate the Empyra training for JobTrak PA online platform?</b>	Fairly Good
<b>Q7: Please use the space below for any additional comments.</b>	
It is very difficult to remember the specifics of a training that happened that long ago.	
<b>Q8: Did you participate in JobTrakPA online platform training with TAACCCT Grant Administration?</b>	Yes

PAGE 5

**Q9: Please rate your training experience with TAACCCT Administrative Team.**

Training met my expectations	Agree
The information shared was new to me	Agree
The session objectives were identified and followed	Agree
The content was organized and easy to follow	Disagree
The training materials were useful	Disagree
The trainer was knowledgeable	Agree
The trainer was prepared	Agree

---

**Q10: Overall how do you rate the training with the TAACCCT Grant Administration Team?** Good

---

**Q11: Please use the space below for any additional comments.**

Again, Difficult to remember the training specifics

**Q12: How satisfied are you with the following features of the JobTrak PA online platform?**

Log in	Somewhat satisfied
Entering student information	Somewhat satisfied
Updating student information	Somewhat satisfied
Locating students	Somewhat satisfied
Resume builder	Did not use this feature
Adding events	Did not use this feature
Network group site area	Did not use this feature
Creating communication from the system	Did not use this feature
Sending communication from the system	Did not use this feature
Printing from the system	Somewhat satisfied
Creating reports	Somewhat satisfied
Accessing and using forms (i.e. training application)	Did not use this feature
Help functions	Did not use this feature
Adding funding to student records	Somewhat satisfied
Adding training programs to student records	Somewhat satisfied
Updating student records	Somewhat satisfied
Self service student portal (i.e. job search, email)	Did not use this feature

**Q13: Do you use the JobTrakPA platform to connect to participants?** No

**PAGE 7**

**Q14: Which if any, of the following features do you use with your program participants? (Check all that apply)**

*Respondent skipped this question*

**Q15: If no, how do you connect to program participants?**

Email lists, phone calls

**PAGE 8**

**Q16: Have you encountered any technical issues when using the JobTrakPA online platform?** No

## PAGE 9

**Q17: How often do you encounter technical problems when using the system?** *Respondent skipped this question*

**Q18: Have the technical problems you encountered impacted your ability to: (Please check all that apply)** *Respondent skipped this question*

**Q19: How would you typically resolve your technical problems? (Check all that apply.)** *Respondent skipped this question*

**Q20: How quickly were your technical problems resolved?** *Respondent skipped this question*

**Q21: Overall, how would you rate the usefulness of the JobTrakPA online platform as a data management system for PA TAACCCT Consortium?** Somewhat useful

**Q22: Which college are you from?** Butler

**Q23: Which best describes your position in the TAACCCT program?** Project Director,  
Other (please specify)  
Administrator, and career coach, one man show

**Q24: Please use the space below for any additional comments.**

This website was too complicated. It was designed to collect much more data than was needed and to perform too many functions that were more easily done in other ways. When a student indicated interest, they automatically were added to my participant lists, which seemed to indicate they were enrolled, when that was not the case.

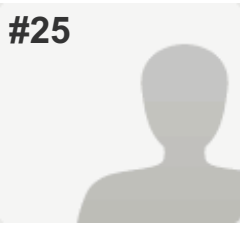
There are too many links and too many landing pages for functions that are not useful. The site asks for Marital status and primary language, things not requested on the enrollment form. There are 13 separate webpages for each individual's profile to navigate among when updating status, employment, completion, etc. Overwhelming to decipher, and more timeconsuming than valuable.

**Q25: Optional to include your name and contact information**

Name Karen Zapp  
College BC3  
Position Project Manager  
Email address karen.zapp@bc3.edu  
Telephone number 724-287-8711 X8172



#25



**COMPLETE**

**Collector:** Web Link (Web Link)  
**Started:** Monday, September 15, 2014 4:26:10 PM  
**Last Modified:** Monday, September 15, 2014 4:36:33 PM  
**Time Spent:** 00:10:23  
**IP Address:** 162.51.33.198

PAGE 2

**Q1: How long have you been using the JobTrakPA platform?** 1-3 years

PAGE 3

**Q2: How often do you use the JobTrakPA platform?** Less than once a month

**Q3: Did you participate in the Empyra/Monster training for the TAACCCT online platform?** Yes

PAGE 4

**Q4: Which 2013 training session did you attend?** Allegheny

**Q5: Please rate your responses about Empyra's Job Trak PA online platform training.**

Training met my expectations	Strongly Disagree
The information shared was new to me	Agree
The session objectives were identified and followed	Strongly Disagree
The content was organized and easy to follow	Strongly Disagree
The training materials were useful	Strongly Disagree
The trainer was knowledgeable	Strongly Disagree
The trainer was prepared	Strongly Disagree
Participation and interaction were encouraged	Agree

**Q6: Overall how would you rate the Empyra training for JobTrak PA online platform?** Not good at all

**Q7: Please use the space below for any additional comments.**

The training was the worst computer training I have ever attended. It was unorganized, the trainer was not able to answer questions. In fact I would say it was a total waste of time.

**Q8: Did you participate in JobTrakPA online platform training with TAACCCT Grant Administration?** Yes

PAGE 5

**Q9: Please rate your training experience with TAACCCT Administrative Team.**

Training met my expectations	Agree
The information shared was new to me	Agree
The session objectives were identified and followed	Agree
The content was organized and easy to follow	Agree
The training materials were useful	Agree
The trainer was knowledgeable	Agree
The trainer was prepared	Agree

**Q10: Overall how do you rate the training with the TAACCCT Grant Administration Team?** Good

**Q11: Please use the space below for any additional comments.** *Respondent skipped this question*

PAGE 6

**Q12: How satisfied are you with the following features of the JobTrak PA online platform?**

Log in	Somewhat satisfied
Entering student information	Very dissatisfied
Updating student information	Very dissatisfied
Locating students	Very dissatisfied
Resume builder	Very dissatisfied
Adding events	Very dissatisfied
Network group site area	Very dissatisfied
Creating communication from the system	Very dissatisfied
Sending communication from the system	Somewhat dissatisfied
Printing from the system	Somewhat dissatisfied
Creating reports	Somewhat dissatisfied
Accessing and using forms (i.e. training application)	Somewhat dissatisfied
Help functions	Somewhat dissatisfied
Adding funding to student records	Somewhat dissatisfied
Adding training programs to student records	Somewhat dissatisfied
Updating student records	Somewhat dissatisfied
Self service student portal (i.e. job search, email)	Somewhat dissatisfied

**Q13: Do you use the JobTrakPA platform to connect to participants?** No

**PAGE 7**

**Q14: Which if any, of the following features do you use with your program participants? (Check all that apply)** *Respondent skipped this question*

**Q15: If no, how do you connect to program participants?**

Through our marketing and website.

**PAGE 8**

**Q16: Have you encountered any technical issues when using the JobTrakPA online platform?** No

## PAGE 9

**Q17: How often do you encounter technical problems when using the system?** *Respondent skipped this question*

**Q18: Have the technical problems you encountered impacted your ability to: (Please check all that apply)** *Respondent skipped this question*

**Q19: How would you typically resolve your technical problems? (Check all that apply.)** *Respondent skipped this question*

**Q20: How quickly were your technical problems resolved?** *Respondent skipped this question*

**Q21: Overall, how would you rate the usefulness of the JobTrakPA online platform as a data management system for PA TAACCCT Consortium?** Not useful at all

**Q22: Which college are you from?** Allegheny

**Q23: Which best describes your position in the TAACCCT program?** Project Director

**Q24: Please use the space below for any additional comments.** *Respondent skipped this question*

**Q25: Optional to include your name and contact information** *Respondent skipped this question*