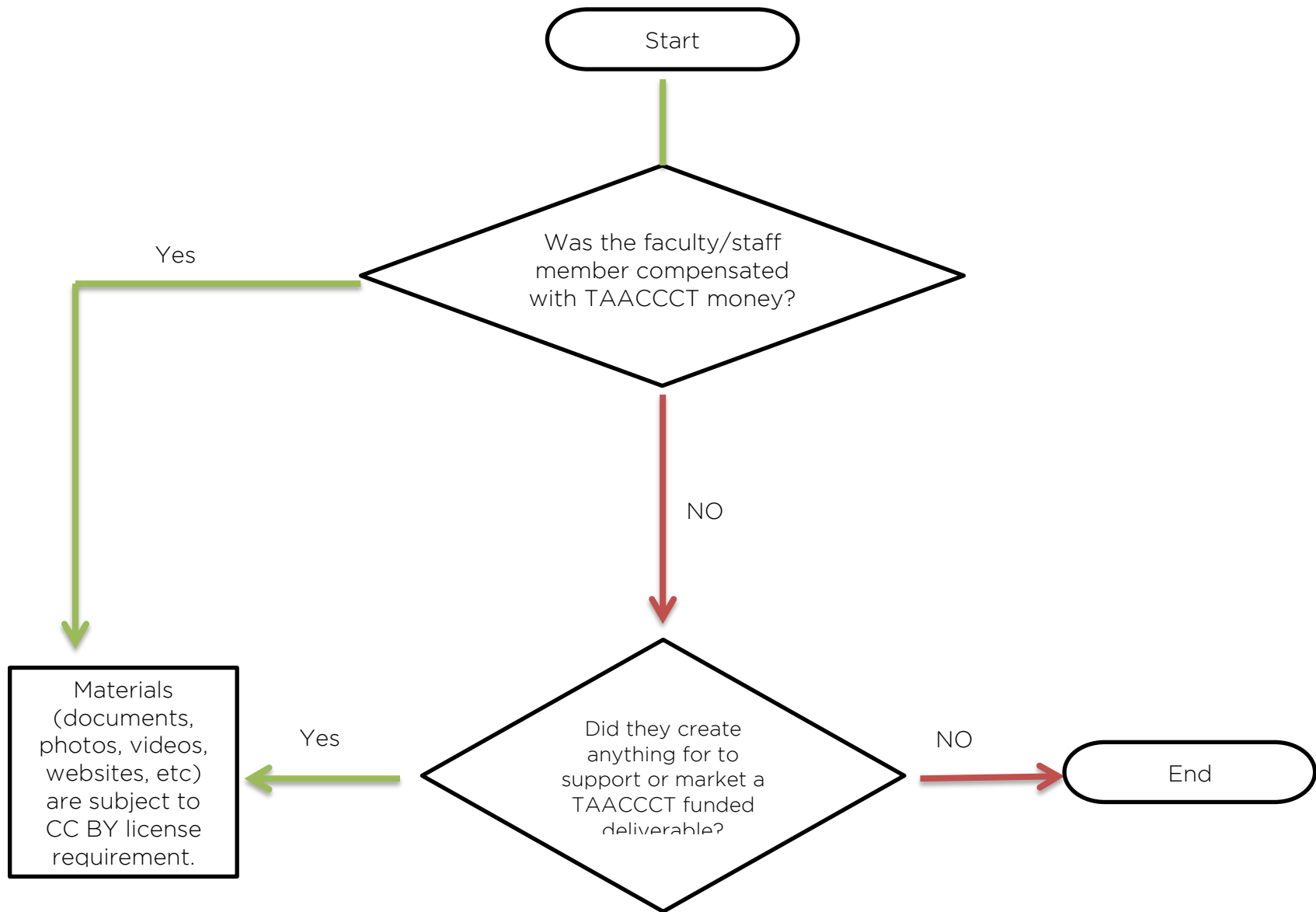
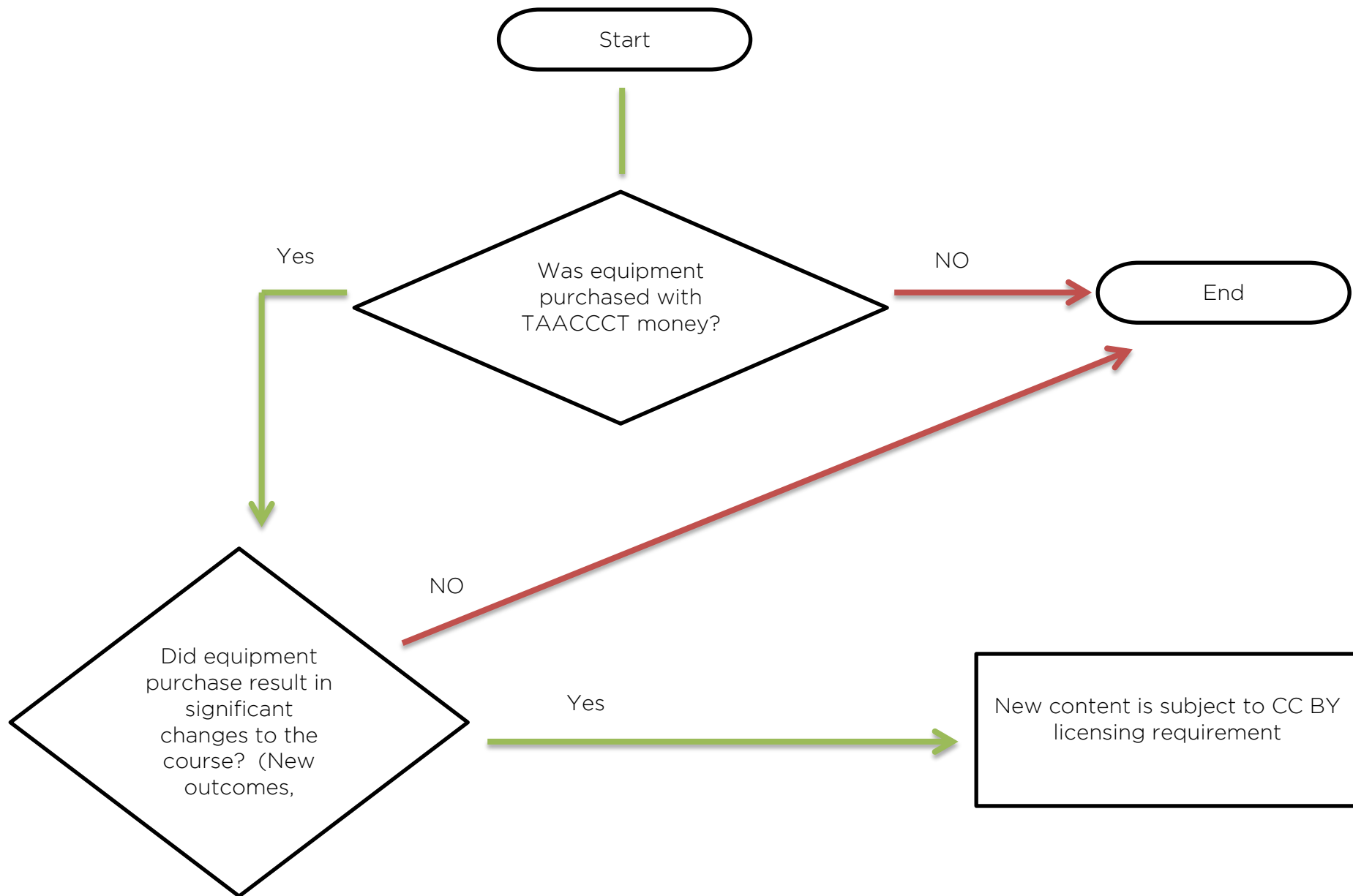


Determine who CC BY content creators are



This work by Jennifer Marcolongo is licensed under the Creative Commons Attribution 4.0 International License. To view a copy of this license, visit http://creativecommons.org/licenses/by/4.0/deed.en_US.

Determine if equipment purchase resulted in materials subject to CC BY licensing requirement.



CC BY Charts by Jennifer Marcolongo is licensed under the Creative Commons Attribution 4.0 International License. To view a copy of this license, visit, http://creativecommons.org/licenses/by/4.0/deed.en_US

This workforce solution was funded by a grant awarded by the U.S. Department of Labor's Employment and Training Administration. The solution was created by the grantee and does not necessarily reflect the official position of the U.S. Department of Labor. The Department of Labor makes no guarantees, warranties, or assurances of any kind, express or implied, with respect to such information, including any information on linked sites, and including, but not limited to accuracy of the information or its completeness, timeliness, usefulness, adequacy, continued availability or ownership.



AMPed NH is sponsored by a \$19.97 million grant from the U.S. Department of Labor, Employment & Training Administration TAACCCT Grant #TC-22504-11-60-A-33. The Community College System of NH is an equal opportunity employer, and adaptive equipment is available upon request to persons with disabilities.



This work by Jennifer Marcolongo is licensed under the Creative Commons Attribution 4.0 International License. To view a copy of this license, visit http://creativecommons.org/licenses/by/4.0/deed.en_US.