

LAVATORY FIXTURE

A handout containing the highlights of the video titled *Residential Plumbing and Repair: Lavatory Fixture*

Lavatory drain line system

The lavatory has a detailed drain line system and uses a p-trap to drain waste, and shut-off valves that are attached to the water supply system that leads back to the waste line.



FIGURE 1. THE INSTRUCTOR STANDS IN FRONT OF A MOCK-UP SINK FIXTURE AND POINTS AT THE P-TRAP INSTALLED UNDERNEATH THE SINK

Underneath the sink is the tailpiece, which is the drain, and the tailpiece extension, which connects the sink to the p-trap.



FIGURE 2. A CLOSE-UP PHOTO OF THE INSTRUCTOR POINTING AT THE TAILPIECE.



FIGURE 3. A CLOSE-UP PHOTO OF THE INSTRUCTOR POINTING AT THE TAILPIECE EXTENSION

The P-trap

The p-trap is used for sinks in the kitchen and the bathroom. P-traps are also found underneath showers, bathtubs, and floor drains. Its purpose is to trap water and stop harmful gases from the sewer lines from backing up into the house. The trapped water will stop the gas, and you won't have the septic or sewer smell.



FIGURE 4. THE INSTRUCTOR POINTS AT THE P-TRAP. THE P-TRAP TRAPS WATER AND PREVENTS HARMFUL SEWER GASES FROM BACKING UP INTO THE HOME.

A p-trap is connected by a slip joint. This makes the p-trap easy to assemble and disassemble for repairing.



FIGURE 5. THE INSTRUCTOR HOLDS A DISASSEMBLED P-TRAP

Supply line

The PEX water supply line installed on the sink terminates and converts into copper in order to install compression shut off valves.

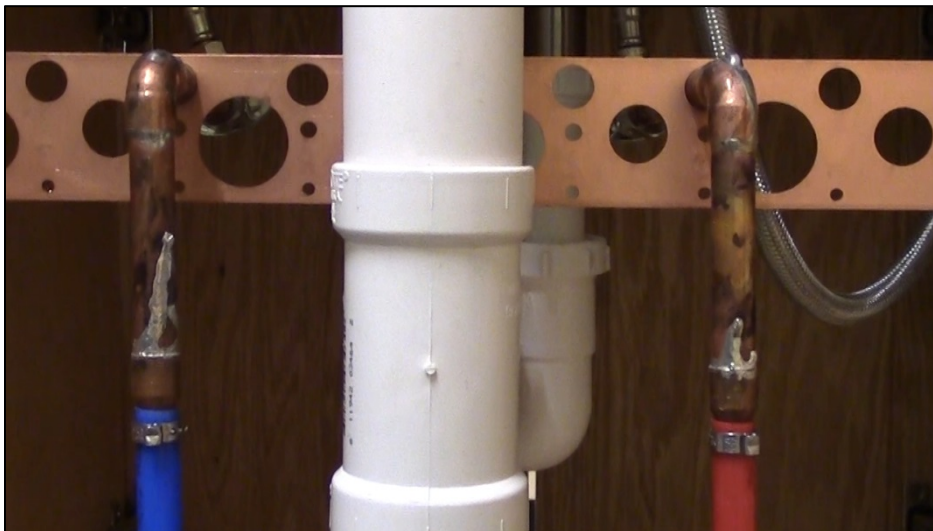


FIGURE 6. A CLOSE-UP OF THE PEX WATER SUPPLY LINE (THE RED AND BLUE COLORED SUPPLY LINES) WITH THE VENT IN BETWEEN. THE PEX SUPPLY LINES CONVERTS TO COPPER, WHICH IS CONNECTED TO THE INSTALLED COMPRESSION SHUT-OFF VALVES. (THE VALVES ARE HIDDEN FROM VIEW IN THIS PHOTO.)

Looking for other learning materials?

The [Residential Plumbing and Repair iTunes U course](#) has video and other learning materials for you to view. You can [download iTunes for free](#) to view the course and course materials.

Disclaimer and License information

This workforce product was funded by a grant awarded by the U.S. Department of Labor's Employment and Training Administration. The product was created by the grantee and does not necessarily reflect the official position of the U.S. Department of Labor. The U.S. Department of Labor makes no guarantees, warranties, or assurances of any kind, express or implied, with respect to such information, including any information on linked sites and including, but not limited to, accuracy of the information or its completeness, timeliness, usefulness, adequacy, continued availability, or ownership.



Unless otherwise noted, this work is licensed under the [Creative Commons Attribution 4.0 International License](http://creativecommons.org/licenses/by/4.0/). To view a copy of this license, go to <http://creativecommons.org/licenses/by/4.0/> on your web browser.



"Making Life Better"
**Kansas City Kansas
Community College**

**DR. THOMAS R. BURKE
TECHNICAL EDUCATION CENTER**