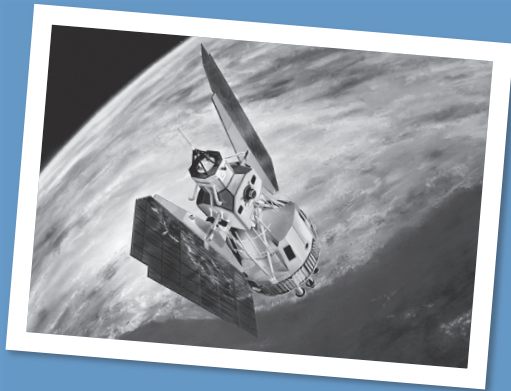


You've Got the Whole  
World in Your Hands

Geographic  
Information Systems  
Certificate of Completion



Salt Lake  
Community  
College

STEP AHEAD.

Salt Lake  
Community  
College



P.O. Box 30808  
Salt Lake City, UT 84130-0808

Non-Profit  
Organization  
U.S. Postage  
**PAID**  
Permit No. 1538  
Salt Lake City, UT

# What is GIS?

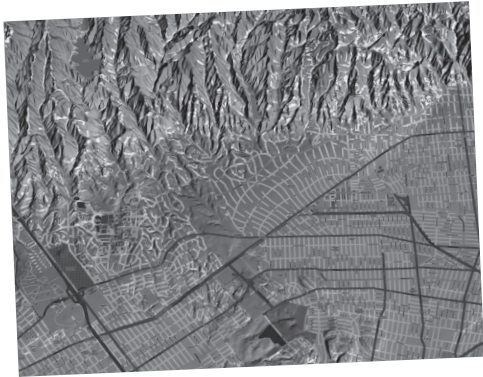
GIS is any system that captures, stores, analyzes, manages, and presents data that are linked to a location. Geography and digital mapping are all around us. Geospatial technology; such as Google Earth, Bing Maps, map-based smart phone apps, satellite imagery, Global Positioning Systems (GPS), and GIS are used by citizens, government and private industry daily.



STEP AHEAD.

## GIS offers careers in:

- Business and Marketing
- Criminal Justice and Law Enforcement
- Urban Planning and Transportation
- Environmental Science and Ecology
- Oceanography
- Geography and Surveying
- Environmental Geology
- Homeland Security and Military
- Local, State, and Federal Government
- Municipalities
- Sociology and History
- Political Science
- Archeology
- Environmental
- Energy Management
- Computer Science
- Meteorology and Climatology
- Anything that requires spatial thinking & analysis!



AA/EO Institution

### Contact:

R. Adam Dastrup,  
Geoscience Coordinator

[www.slcc.edu/gis](http://www.slcc.edu/gis)

[adam.dastrup@slcc.edu](mailto:adam.dastrup@slcc.edu) (801) 957-4880

### **GIS Certificate: 30 credit hours total**

9 credit hours of general education

6 credit hours of student electives

15 hours of GIS courses

Those students earning an associate's degree or who have a degree need the following five GIS courses to complete the certificate.

GEOG 1800: Geospatial Technology

GEOG 1820: Applied GIS I

GEOG 2100: Maps & Measurements

GEOG 2900: Independent Projects

GEOG 2920: Applied GIS II