



CASE Career Center



EMPLOYER FORUM

Networking & Hiring Practices

FEATURING

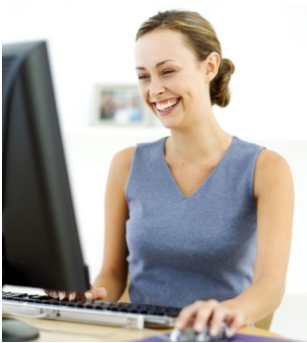
LOCAL EMPLOYERS FROM

Culinary Arts • Business • Welding • Clerical • Health
Computer Information Systems

ACTIVITIES INCLUDE

Interactive Discussion Panel • Mock Interviews • Networking

DRESS FOR SUCCESS FASHION SHOW
“WHAT NOT TO WEAR”



MAY 8, 2013
3:00 – 5:30 PM



EMPIRE HALL SWOCC CAMPUS

FOR MORE INFORMATION 541-888-1621

careercenter@socc.edu



Equal Employment Opportunity CASE is a WIA Title I- financially assisted program and is therefore an equal opportunity employer/program which provides auxiliary aids and services upon request to individuals with disabilities by calling 711 or 800.648.3458 TTY. US Department of Labor The CASE grant project (\$18,679,289) is 100% funded through the US Department of Labor's Trade Adjustment Assistance Community College and Career Training program. DOL Attribution This workforce solution was funded by a grant awarded by the US Department of Labor's Employment and Training Administration. The solution was created by the grantee and does not necessarily reflect the official position of the US Department of Labor. The Department of Labor makes no guarantees, warranties or assurances of any kind, express or implied, with respect to such information, including any information on linked sites and including, but not limited to, accuracy of the information or its completeness, timeliness, usefulness, adequacy, continued availability or ownership.

This work is licensed under a Creative Commons Attribution 4.0 International License.

