



FG2

What is Smart Old Home?

- Simply put- **Home efficiency Solutions for living space and health**
- Fits within the framework of FC2's commitment to community engagement, expanding access, and inclusion
- Combines the use of building technology research and data backed remedies to provide solutions for homeowners
- Information is presented in a approachable manner, easy to understand and implement



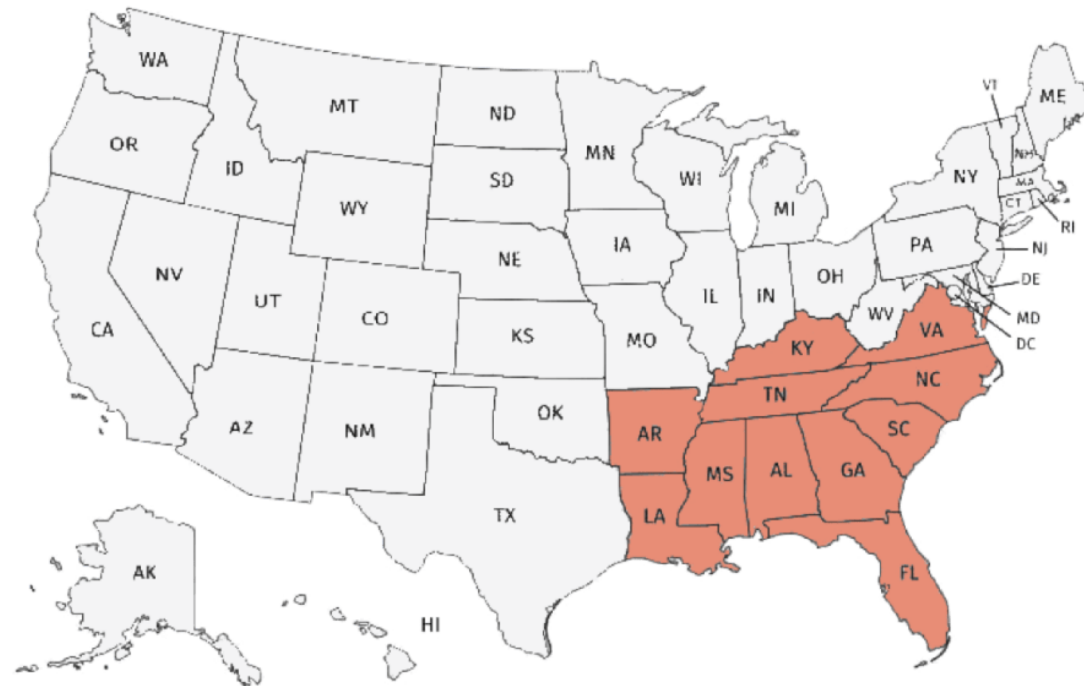
Joann desires a better living situation. *"I am just getting by, I cannot save money because I am spending so much on my utilities, but I dont know how to fix that."*

Nick shared this about one of his neighbors. *"I went to visit my friend and was shocked to see the thermostat set at 90 degrees. It was the middle of winter, but that was unreal. What was even more shocking was the house was not overly hot, it actually felt comfortable. This is clearly not right."*

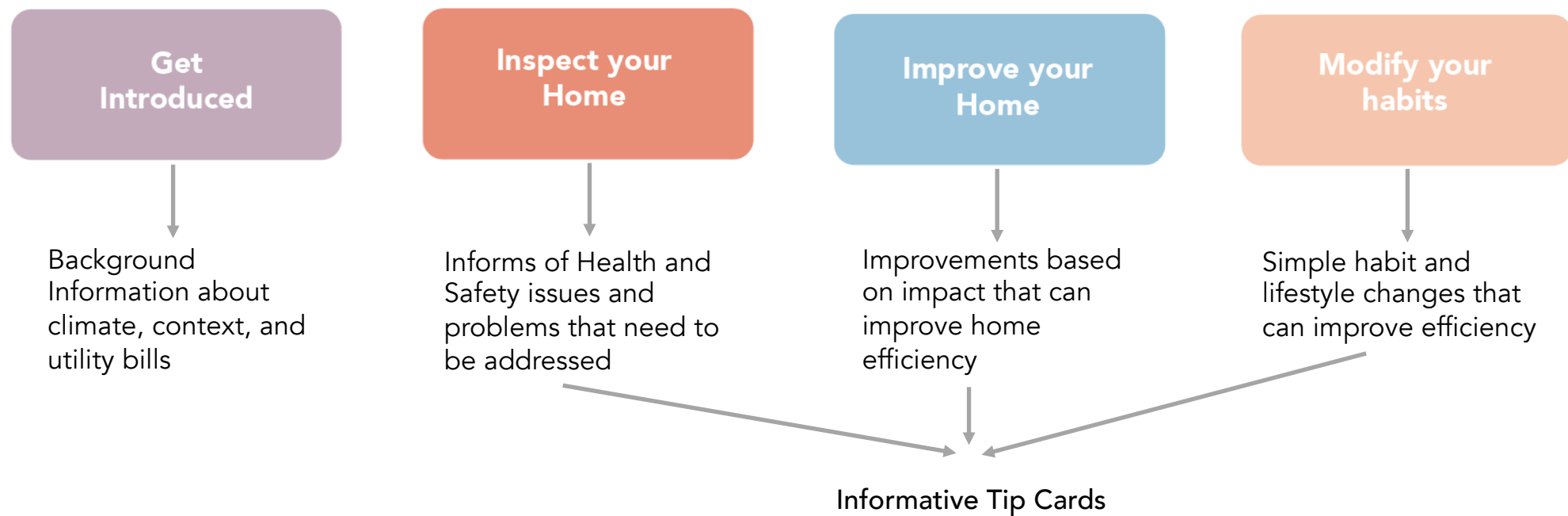
Testimonials that drove our research

Who can Benefit from Smart Old Home?

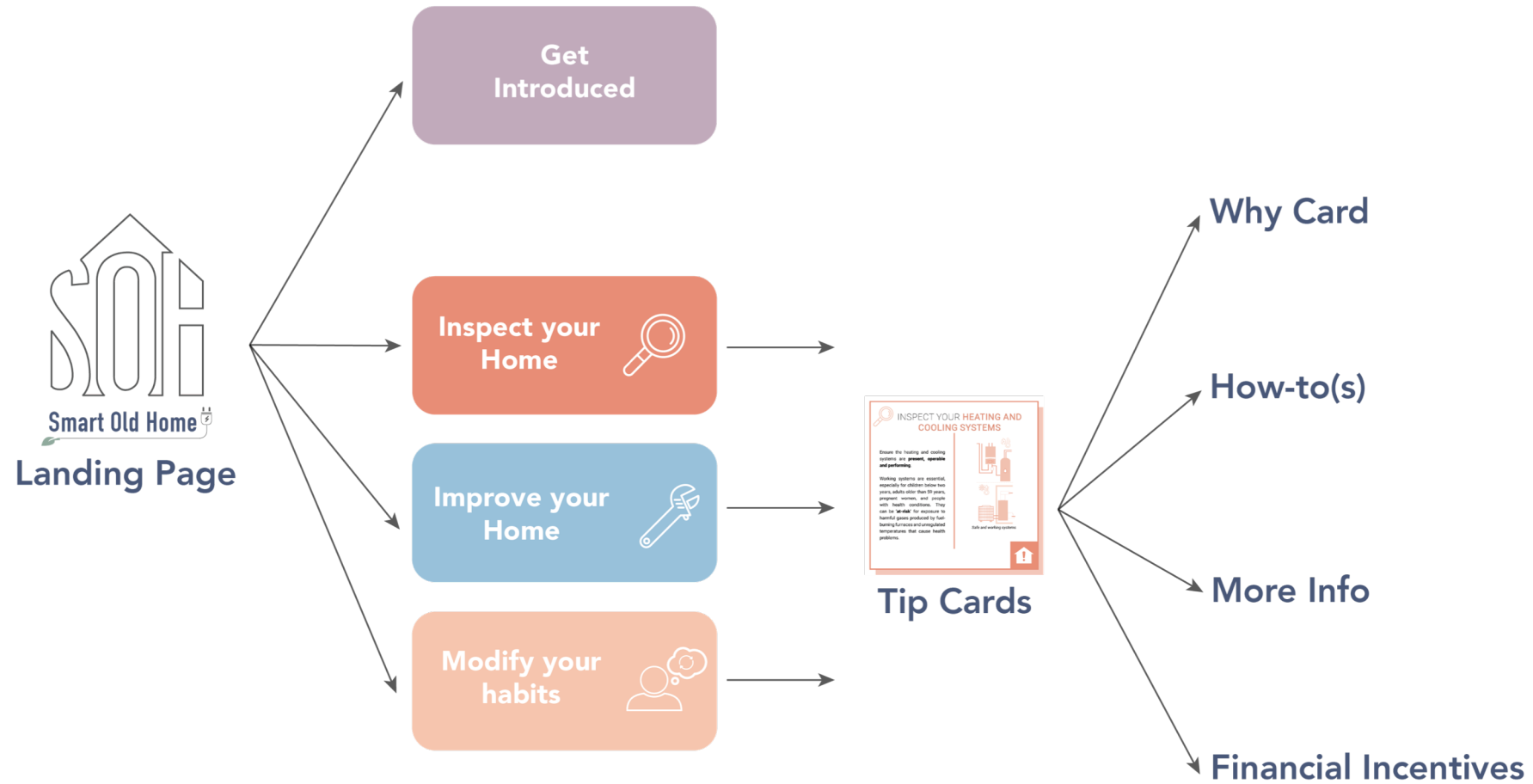
- Developed for Atlanta, in particular the English Avenue neighborhood, it applies to the Southeast U.S.



How is Smart Old Home organized?



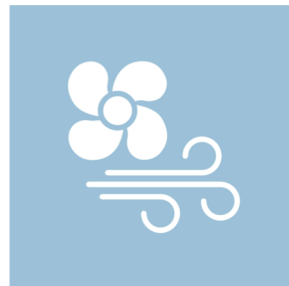
How does that organization fit within the website?



What Systems do the Tip Card address?



Health and Safety



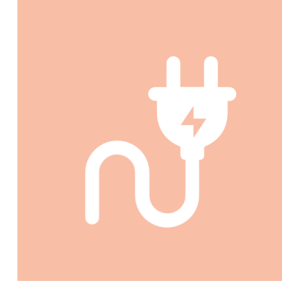
Heating, Ventilation, and Air Conditioning



Water



Exterior



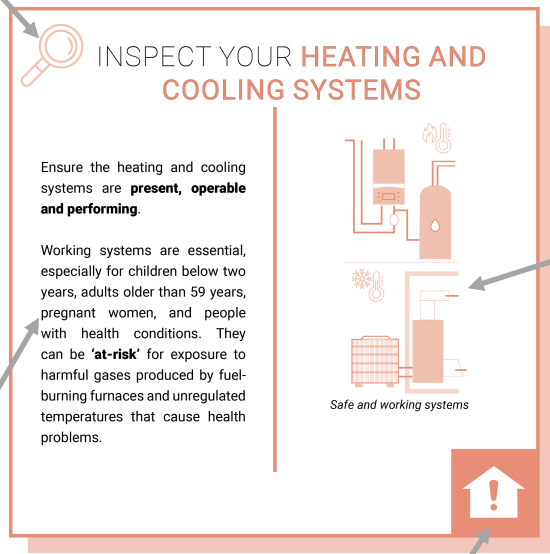
Appliances and Lighting



Building Envelope

What is a Tip Card?

Inspect
Icon



Icon shows system to inspect

Color and Health and Safety Icon indicate system

Overview of Information

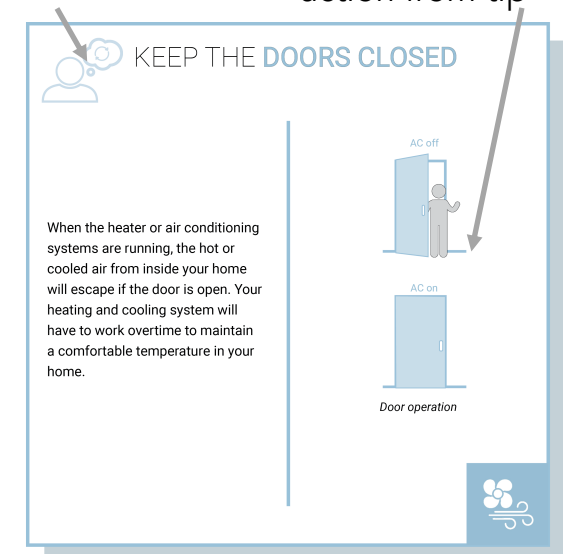
Improve
Icon



Icon demonstrating action from tip

Color and Building Envelope Icon indicate system

Modify
Icon



Icon demonstrating action from tip


Color and HVAC Icon indicate system



What is a Why Card?

- Informs of potential hazards
- Highlights importance and rationale behind the tip
- Notes the savings if the tip is implemented

WHY SAFE SYSTEM?

POTENTIAL HAZARDS	ENERGY + WATER BILL SAVINGS
<ul style="list-style-type: none">• A failing gas water heating system causes discomfort, has poor durability, is inefficient, and can be dangerous if not addressed.• Gas-based water heaters are homes' most easily backdrafted combustion appliances.• Look for any red flags: Visible corrosion, water leaking, rust in your water, lack of available hot water, or rumbling noises.	<p>10% to 20% </p> <p>Inspect your water heater once a year. Regular maintenance can significantly extend your water heater's life and minimize loss of efficiency. Read and follow instructions in the owner's manual for specific maintenance recommendations. If your water heater is more than ten years old, it's time to consider replacing it before it creates any emergency.</p>

DISCLAIMER: These are offered as general guidelines. For more complicated situations, seek the guidance of a professional.

GT Georgia Tech College of Design School of Architecture



What is a How-to?

- Improvements that apply to the tip have How-tos to explain how to implement them
- Step by step guide
- Includes an image and explanations to guide the user through the importance of this action

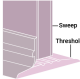
HOW TO WEATHERSTRIP DOORS?




Weatherstripping is the process of sealing the gaps in the moving parts of the windows and doors.

Weatherstripping a door helps prevent hot and cold air from escaping or coming into your house. It can help prevent rain from being driven under your door and into your home and can also be a barrier to bugs.

- 01 CLEAN AND MEASURE**
Clean your doorway, and then proceed to take some measurements of your door.
- 02 TIGHTEN DOOR HINGES**
Examine your door hinges to see if they need to be tightened. Use the doorknob to lift door upwards. If the door moves upward, then tighten the screws on the top hinge. Tighten the screws in the bottom hinge as well. By tightening your screws, you ensure that your new weatherstripping installation will fit the gaps evenly and function properly.
- 03 MEASURE THE JAMB**
Measure the distance between your door and jamb at all sides. This distance will let you know how thick the weatherstripping must be.
- 04 CUT THE WEATHERSTRIPPING**
Cut the weatherstrip into three different segments. Two of those segments will be for the door sides, while the last segment will be for the top of the door. Ensure the material is cut at the correct lengths to match the door sides.
- 05 APPLY THE WEATHERSTRIPPING**
Clean the surface and apply the weatherstripping into its slots starting from the top. Check the installation by shutting the door from the outside and look for gaps.
- 06 INSTALL THE SWEEP**
Attach a sweep along the bottom of the door. The sweep should match the width of the door. If you are having trouble finding the correct width, you can trim a larger door sweep so that it matches the width of your door. Predrill holes in your door sweep with an electric drill or driver. Once the holes are drilled, install the door sweep by using screws to secure the sweep in place.
- 07 INSTALL A DOOR THRESHOLD**
Vinyl gaskets are good choice for doors. If the door needs a new threshold, install a simple adjustable threshold with vinyl gasket. If the door is square, install a non-adjustable type. The same process can be repeated for attic storage doors and other openings that are located between a conditioned and a non-conditioned space.





DISCLAIMER: These are offered as general guidelines. For more complicated situations, seek the guidance of a professional.






What is the More Info Card?

- Notes the Key areas for inspection or materials used
- Lists the resources found during the research process

MORE INFO ON **WORKING SYSTEMS**

KEY AREAS TO INSPECT	RESOURCES
<p>To maintain your air conditioner in a working condition, inspect the following at least once a year:</p> <ul style="list-style-type: none">• AC filters and coils• Ductwork for dirt streaks• Systems controls for proper and safe operation• Flue piping for rusting and any disconnections• Thermostat settings• Condensate drains for clogging	<ul style="list-style-type: none">• "Maintaining Your Air Conditioner." -Energy.gov.• "A Guide to Energy-Efficient Heating and Cooling" -EPA Energy Star, Createspace Independent Publishing Platform, 2013.

DISCLAIMER: These are offered as general guidelines. For more complicated situations, seek the guidance of a professional.


 Georgia Tech College of Design
School of Architecture




What are the Financial Incentives?

- Different programs around Atlanta and the Southeast provide financial assistance for home improvements
- This card highlights the programs that are applicable for the certain tip
- Users would be linked to the contact/application for the financial assistance


FINANCIAL INCENTIVES



GA POWER'S HOME ENERGY IMPROVEMENT PROGRAM
Home Energy Assessment Up to \$75 - \$150 in rebates




REPAIR WITH KINDNESS PROGRAM
Up to a maximum of \$20,000 on critical home repairs



LOW INCOME HOME ENERGY ASSISTANCE
\$350, \$450, or \$500 once per program year on home energy bill

[Click here to for more information and to apply!](#)

DISCLAIMER: The above incentives are for residents in Atlanta. Look for your local utility provider website and state incentives for rebates.



Georgia Tech College of Design
School of Architecture



How can SOH influence decisions and actions?

- Introducing the Impact factor - a value for cost effectiveness of recommended measures using simple Savings to Investment Ratio calculations.

Example Measure

Assumptions based on BEOpt and literature Review:

Savings/yr: \$100

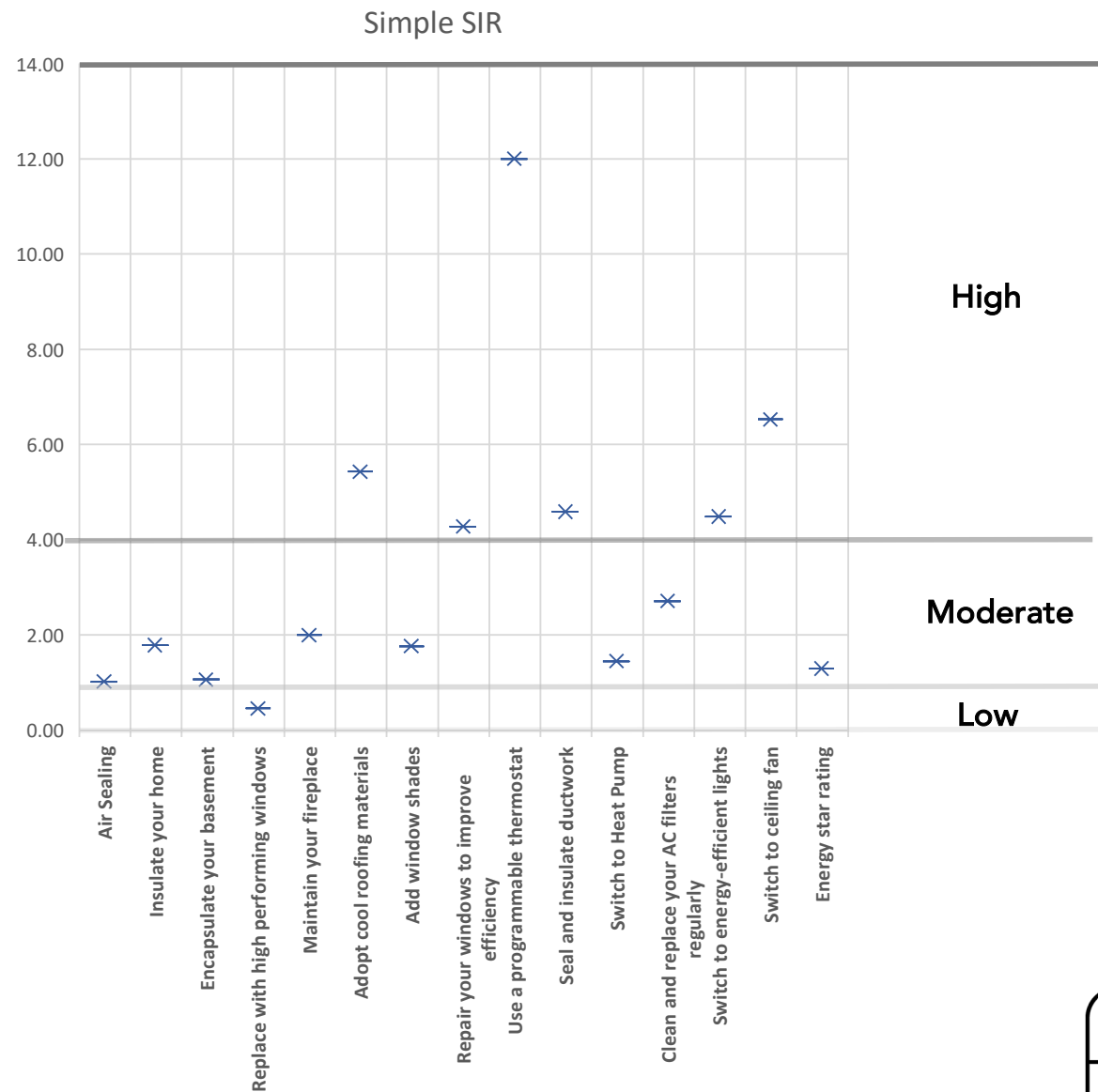
Lifetime: 10 years (average)

Investment: \$400

$SIR = \text{Lifetime Savings} / \text{Investment}$

$SIR = 10 \times 100 / 400$

SIR = 2.5





To the Website!

Conclusion

