

Young Adults Facing Homelessness Data Chat

We want to learn
from your
experience!



**Francisca
García-Cobián
Richter, PhD**
Research Associate
Professor at the Jack,
Joseph and Morton
Mandel School of Applied
Social Sciences



Alice Jackson
Founder and Director of
Thinking CAPP



Nicole Coury
Third-year MSSA/MBA
Student at the Jack,
Joseph and Morton
Mandel School of Applied
Social Sciences and
Weatherhead School of
Management

**Emily Nelson, MPH,
PhD**
Post-Doctoral Scholar,
Department of
Population and
Quantitative Health
Sciences
at the Mary Ann
Swetland Center for
Environmental Health
School of Medicine



Welcome to The Center on Poverty and Community Development's Young Adults Facing Homelessness Data Chat!

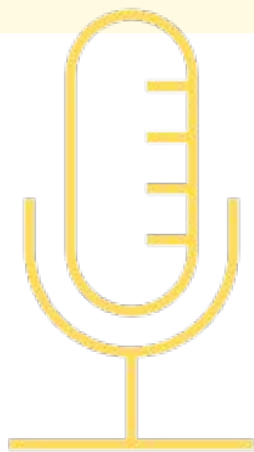
Our goals for this data chat:

- We will be sharing some data about the experiences of young adults facing homelessness and trying to get access to services
- We want to learn from your experience **with the data intake process** for coordinated intake and what may influence participants' ability to access services or not
- We also want to get your ideas on what could be done to reduce barriers to service for young adults who face or are at risk of homelessness.
- After this session, we will write a report on how community knowledge enriches the understanding of data on youth homelessness
- In our second session we want to share the report and give you a chance to provide feedback

Before we get started...

Our Conversation will be Recorded

We will tell you when the recording starts and stops. No identifying information about you will be included and the recorded files will be destroyed no later than one year after the meeting.



We Want to Hear Your Voice!

We may call on you if you have not spoken for a while. You may always refuse to answer any question or stop participating at any time.



We Want to be Respectful of All Voices and Experiences

We all agree to maintain a respectful tone when sharing, even if we disagree with each other.



What You Say is Confidential!

What you say is confidential, and we would really like to hear from all of you.



Today's Plan

- 1 Introductions
- 2 Data Exercise
- 3 Sharing Data for your Feedback
- 4 Your Data Intake Experience
- 5 Your Advice

Let's begin!

Any questions before we start?

Introductions

This session will involve a lot of sharing so before we start with the session, let's warm up a little with this icebreaker question:

What neighborhood or community do you currently call home and what is something that you like about it?

Please introduce yourself to the group with your first name and neighborhood/community!

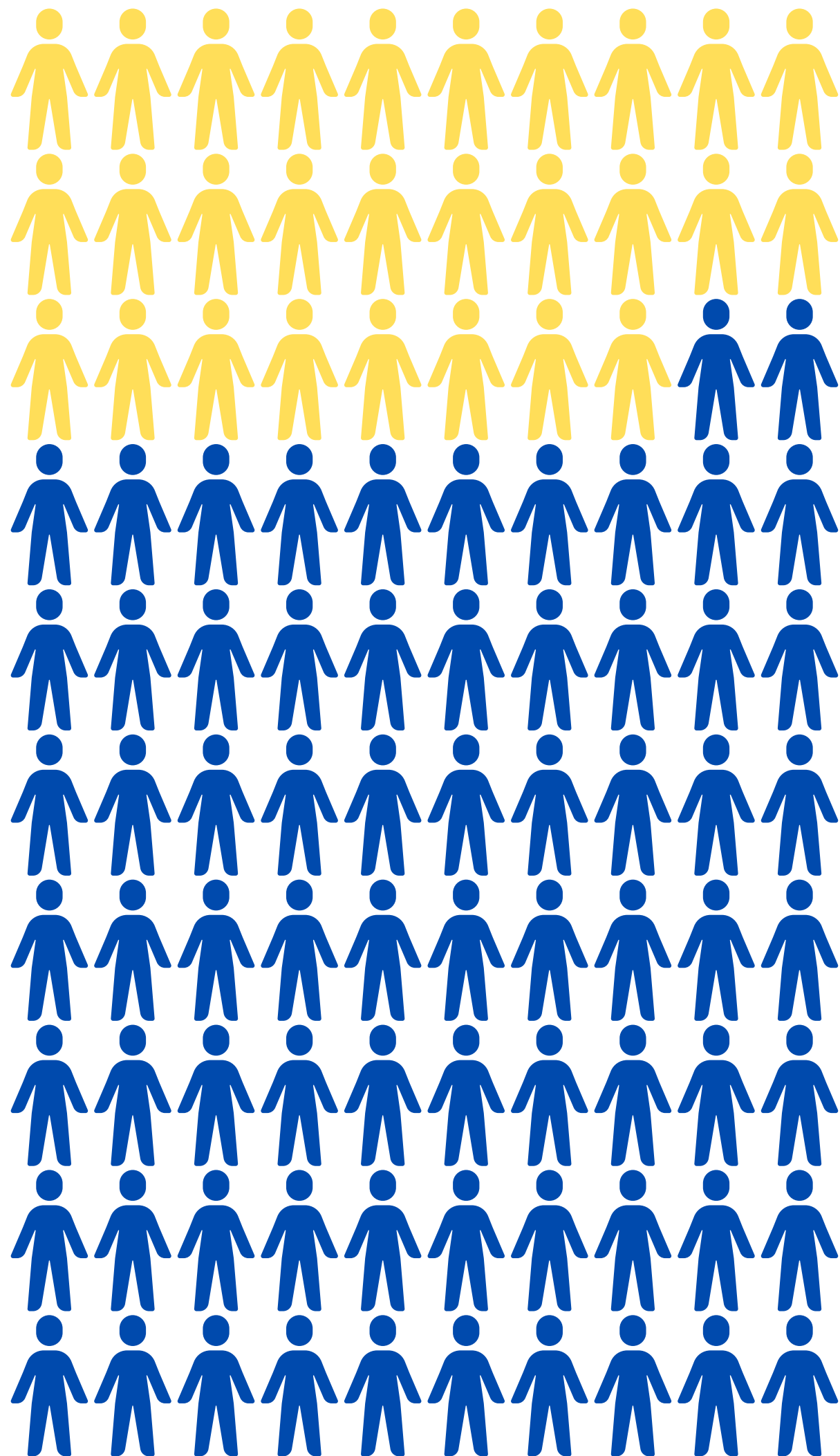


Data Exercise

Please, respond to these questions **from your own experience**. Each participant has a unique experience so there are **no right or wrong answers**.

Data Exercise

- How many young people (under the age of 26) that you know have **experienced homelessness** this year?
- How many young people (under the age of 26) that you know spent some time **in shelter** this year?
- How many young people (under the age of 26) that you know have spent some time **doubled-up** (with friends or family out of necessity) or **living in their car** this year?



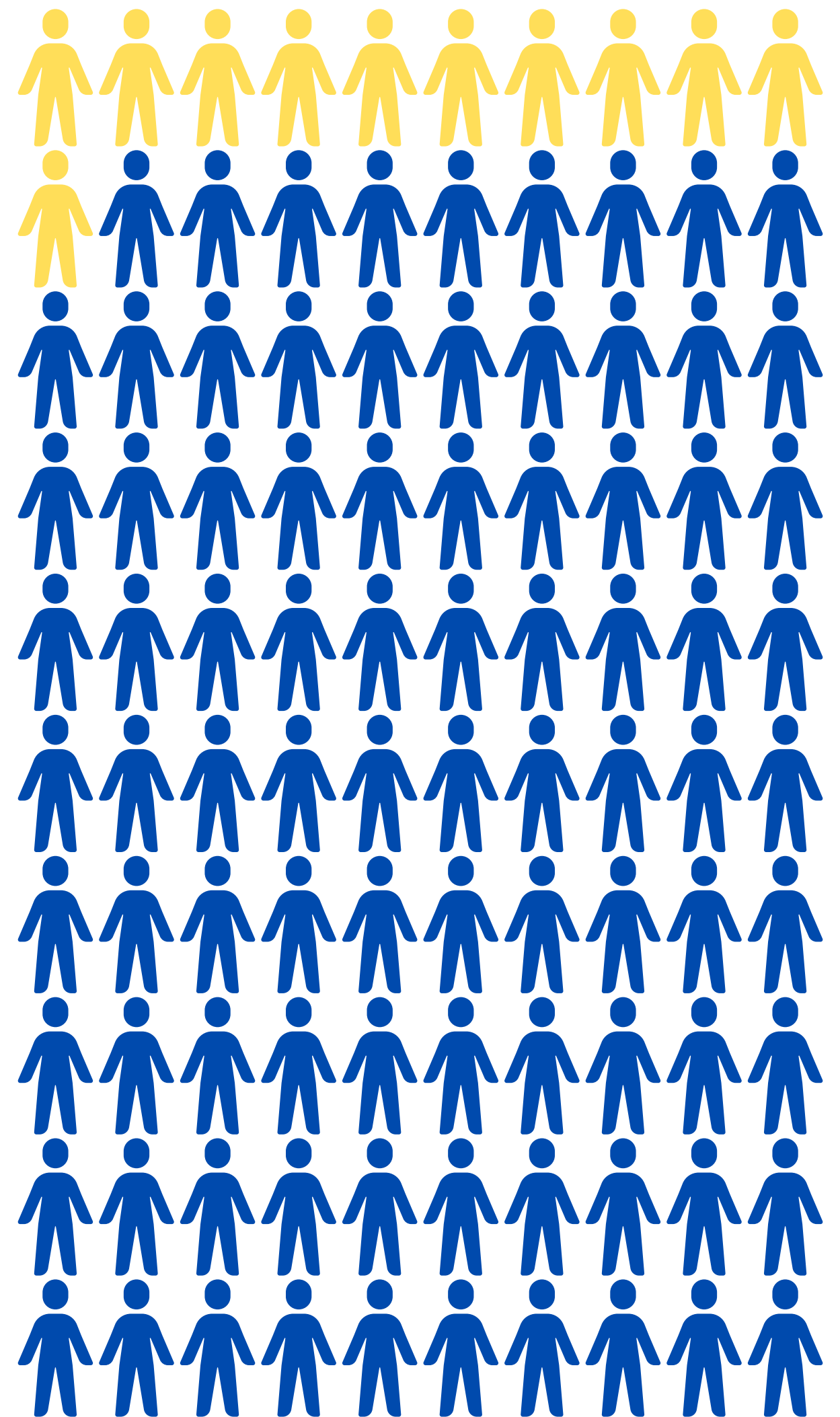
Data from Ohio Homeless Services (OHS) for Cuyahoga County identifies **4,550 youth, ages 13-26** (proportion in **blue**) connected with homeless services sometime in 2017-2019.

The Cleveland Metropolitan School District identifies an additional **1,786 youth** (proportion in **yellow**) for homeless services **not seen through OHS coordinated intake.**

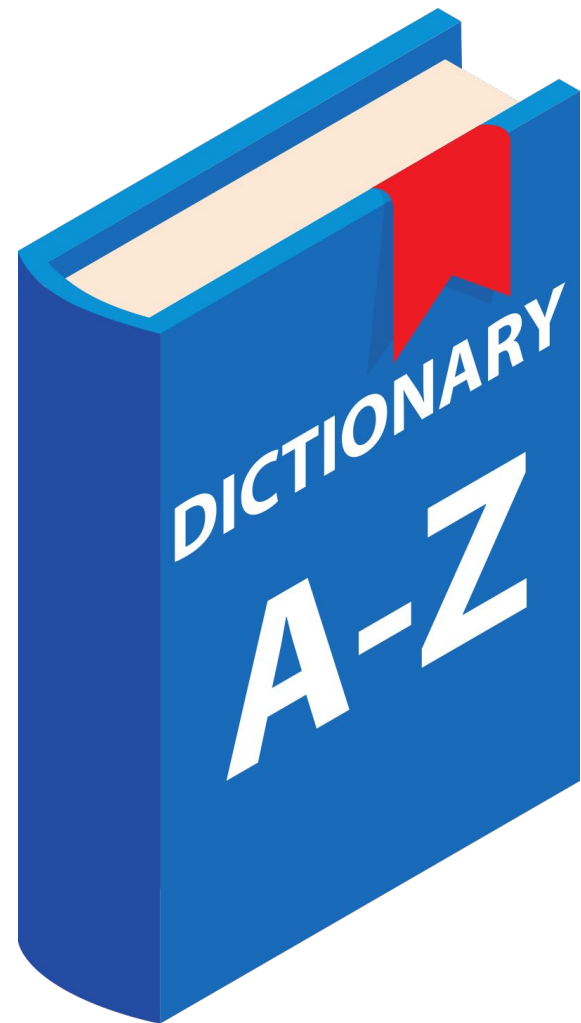
During the last quarter of 2019 (October–December), **526 youth 13-18 were identified as homeless** (represented here in **blue**) by CMSD, mostly in a doubled-up arrangement. Among them, **only 60 (11%)** (represented here in **yellow**) were identified by Coordinated Intake.

Do you think this data reflects the entire population of people in need of homeless services?

Discussion



As seen with the previous exercise, data are imperfect
- they provide an incomplete view of homelessness
and there is not just one definition of homelessness.



Definitions of Homelessness

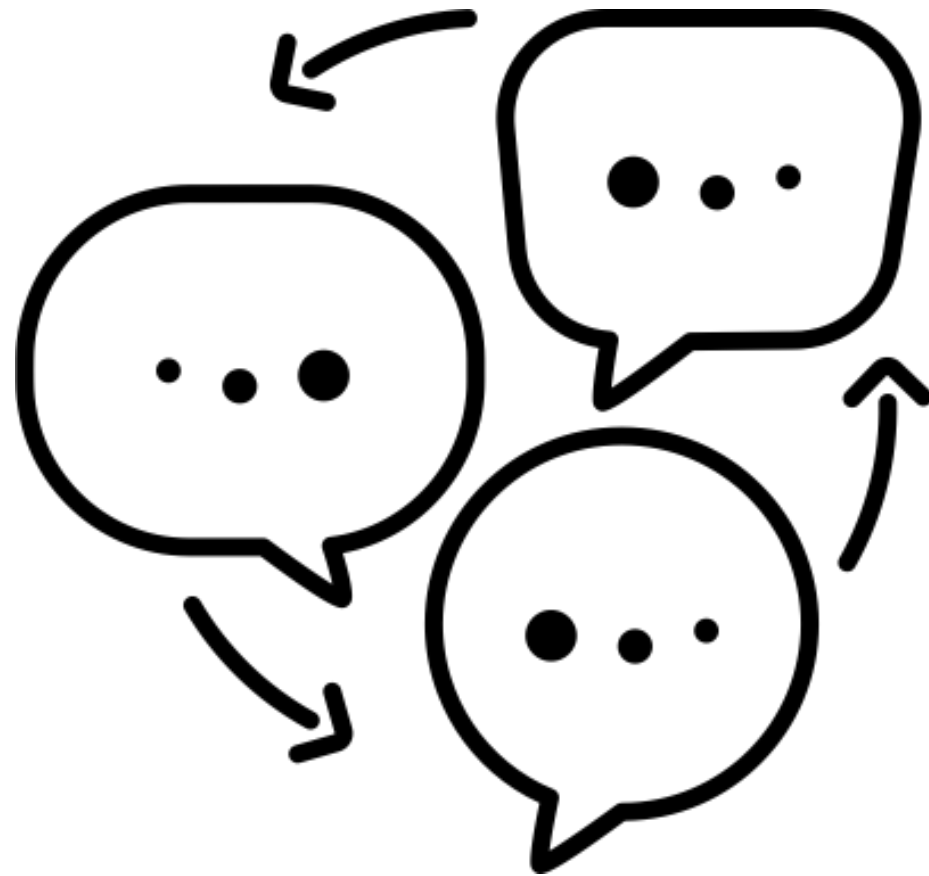
Your feedback can help us gain a better understanding of what the data may miss and why.

Discussion

Do you think the following definitions capture all circumstances that reflect homelessness?

What may be missing?

What is your definition of homelessness?



Narrow definition

*used by **HUD** and **OHS** to provide services*

Living in:

- A place not meant for habitation (public spaces, car)
- A hotel or motel paid for by agency or government
- A Warming Center
- An Emergency Shelter
- A hospital, rehab, or other institution if homeless prior to entry and staying 90 days or less; or
- Fleeing or attempting to flee abuse or domestic violence

Broader definition

*used by school districts like **CMSSD** to provide services*

Lacking a fixed, regular, and adequate nighttime residence
(including the narrow definition and cases where people “double
up” with more than one-family in a household due to loss of
housing or economic hardship)

Discussion

Do you think these definitions capture all circumstances that reflect homelessness? What may be missing? **What is your definition of homelessness?**



Data Intake Experience

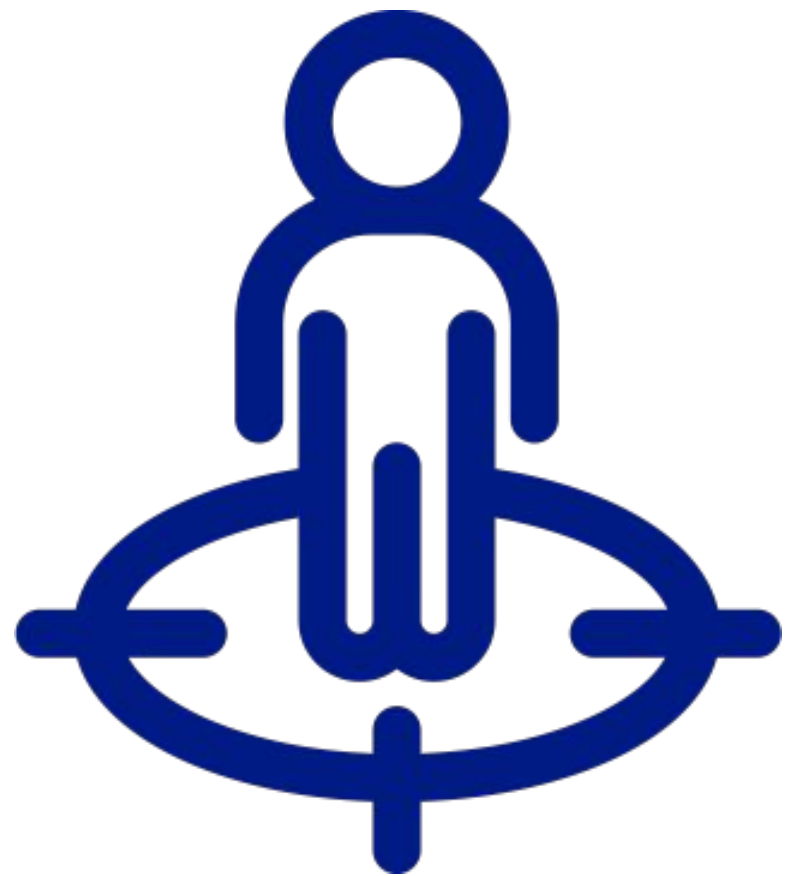
Based on your
experience...



- **Who entered the information** you provided in the intake form or computer?
- **Were you offered an explanation** for the need to gather this information from you?
- **Do you think the intake of this data is necessary** to provide the appropriate services?
- If you have enrolled in other assistance programs, **do you find that the data intake process is more demanding for one program than another?**

Data Intake on Demographics

Discussion



- How was this data collected from you?
- Is it **important** to capture this data?
- Do you have any **recommendations** on how to collect this data?

Your Advice



Based on your experience, what could help **reduce the burden** of data intake for people facing homelessness?

In a perfect world, what **housing, shelter, or transitional resources** would be available to people facing homelessness?

Thank You!

Thank you for sharing your knowledge with us. We hope to see you at our final meeting, where we'll share a summary of this work for your feedback.

