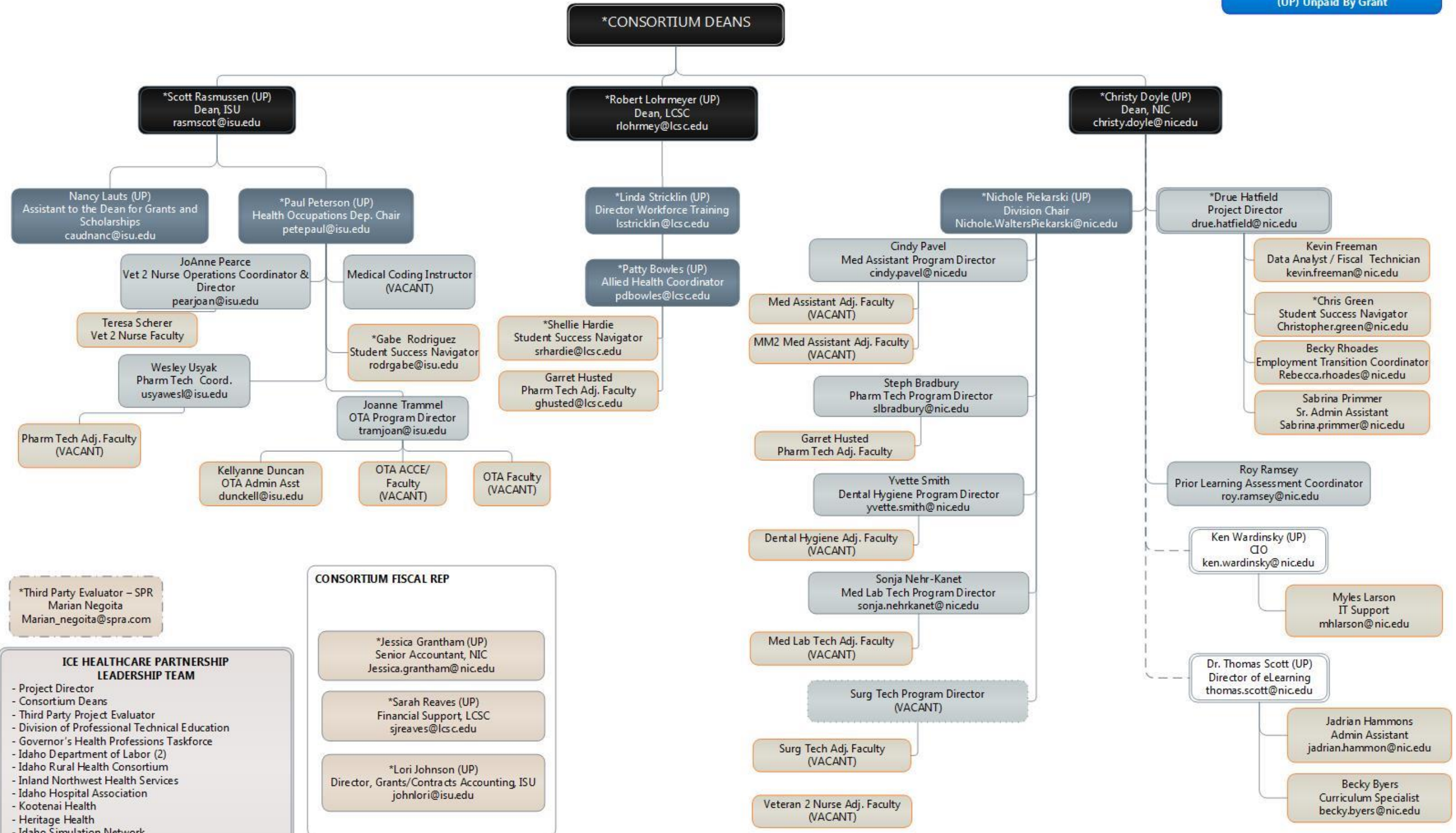


ICE HEALTHCARE PARTNERSHIP ORGANIZATION CHART

Dotted Lines Indicate Communication
Solid Lines Indicate Reports To
(*) Serves on Project Team
(UP) Unpaid By Grant



This workforce solution was funded \$643,050 (100% of its total cost), from a grant awarded under the Trade Adjustment Assistance Community College and Career Training Grants, as implemented by the U.S. Department of Labor's Employment and Training Administration. (ETC-26479-14-60-A-16). The solution was created by the grantee and does not necessarily reflect the official position of the U.S. Department of Labor. The Department of Labor makes no guarantees, warranties, or assurances of any kind, express or implied, with respect to such information, including any information linked on sites and including, but not limited to, accuracy of the information or its completeness, timeliness, usefulness, adequacy, continued availability or ownership. North Idaho College is an Equal Opportunity institution. Auxiliary aids and services are available upon request to individuals with disabilities.

This workforce solution was funded \$6,438,050 (100% of its total cost), from a grant awarded under the Trade Adjustment Assistance Community College and Career Training Grants, as implemented by the U.S. Department of Labor's Employment and Training Administration. (#TC-26479-14-60-A-16). The solution was created by the grantee and does not necessarily reflect the official position of the U.S. Department of Labor. The Department of Labor makes no guarantees, warranties, or assurances of any kind, express or implied, with respect to such information, including any information linked on sites and including, but not limited to, accuracy of the information or its completeness, timeliness, usefulness, adequacy, continued availability or ownership.



This work is licensed under a [Creative Commons Attribution 4.0 International License](https://creativecommons.org/licenses/by/4.0/).