



Map Elements

Map elements

- ◆ borders - frame line,
- ◆ neat line
- ◆ mapped area
- ◆ title, subtitle
- ◆ inset
- ◆ legend
- ◆ legend title
- ◆ scale indicator
- ◆ orientation indicator
- ◆ data source
- ◆ author's name
- ◆ text blocks
- ◆ other graphics
- ◆ map series

Map elements

- ◆ Which map elements are used...
- ◆ ...and their placement and style...
- ◆ ...will vary depending upon audience and message

Map title

- ◆ ...should generally indicate what, where, when
- ◆ ...use “natural breaks” in text blocks
- ◆ ...simplify

Map title

◆ ...simplify...

A Map of the Population Growth in the
United States of America between
1980 and 1990, Displayed by County

replaced with

1980-1990 U.S. Population Growth by County

or

Colonies Controlled or Ruled by Spain on the Eve
Of the Span-American War

replaced with

The Spanish Empire in 1898

BRUSH FIRE HAZARD

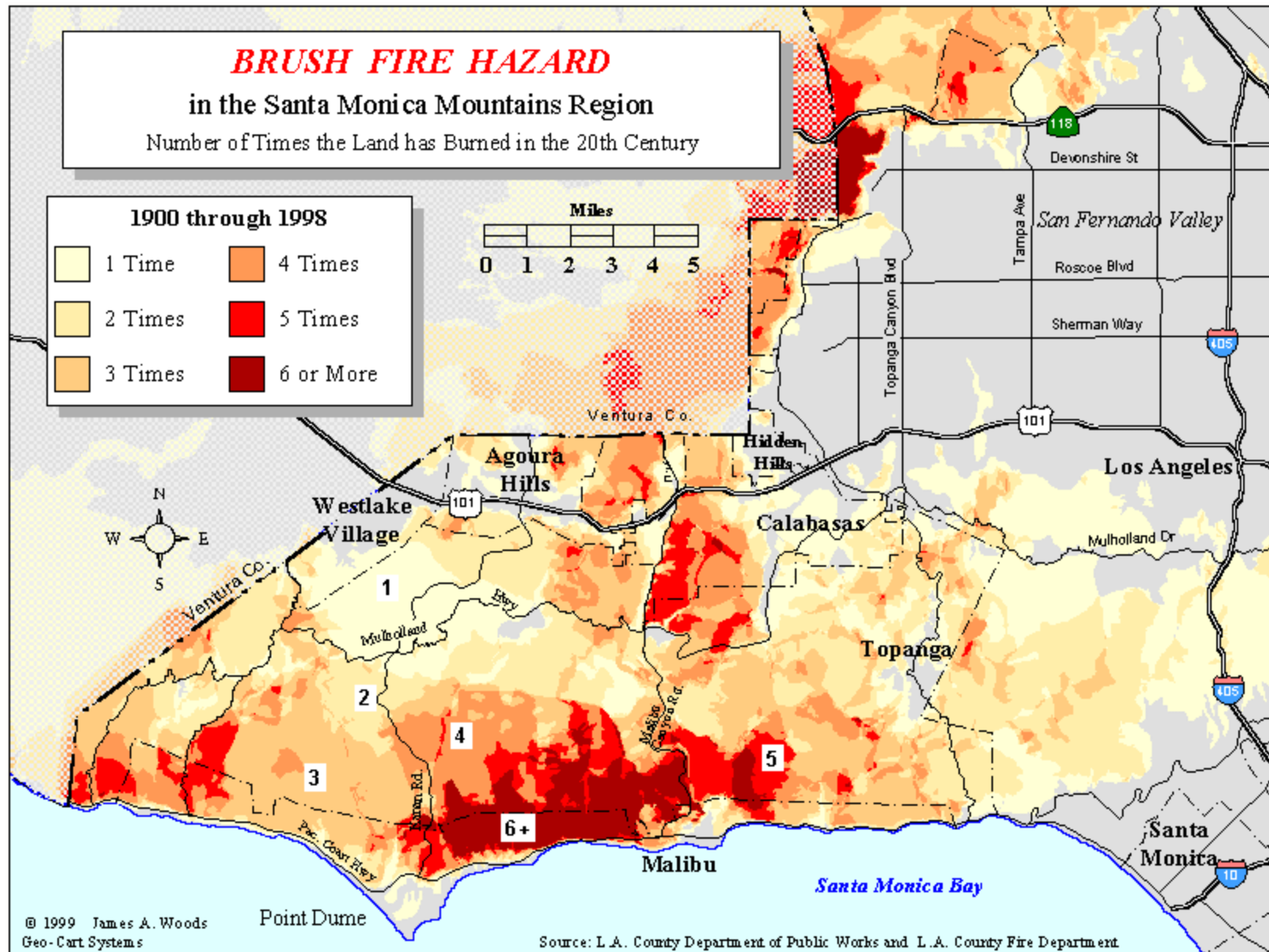
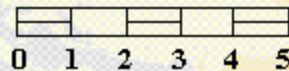
in the Santa Monica Mountains Region

Number of Times the Land has Burned in the 20th Century

1900 through 1998

1 Time	4 Times
2 Times	5 Times
3 Times	6 or More

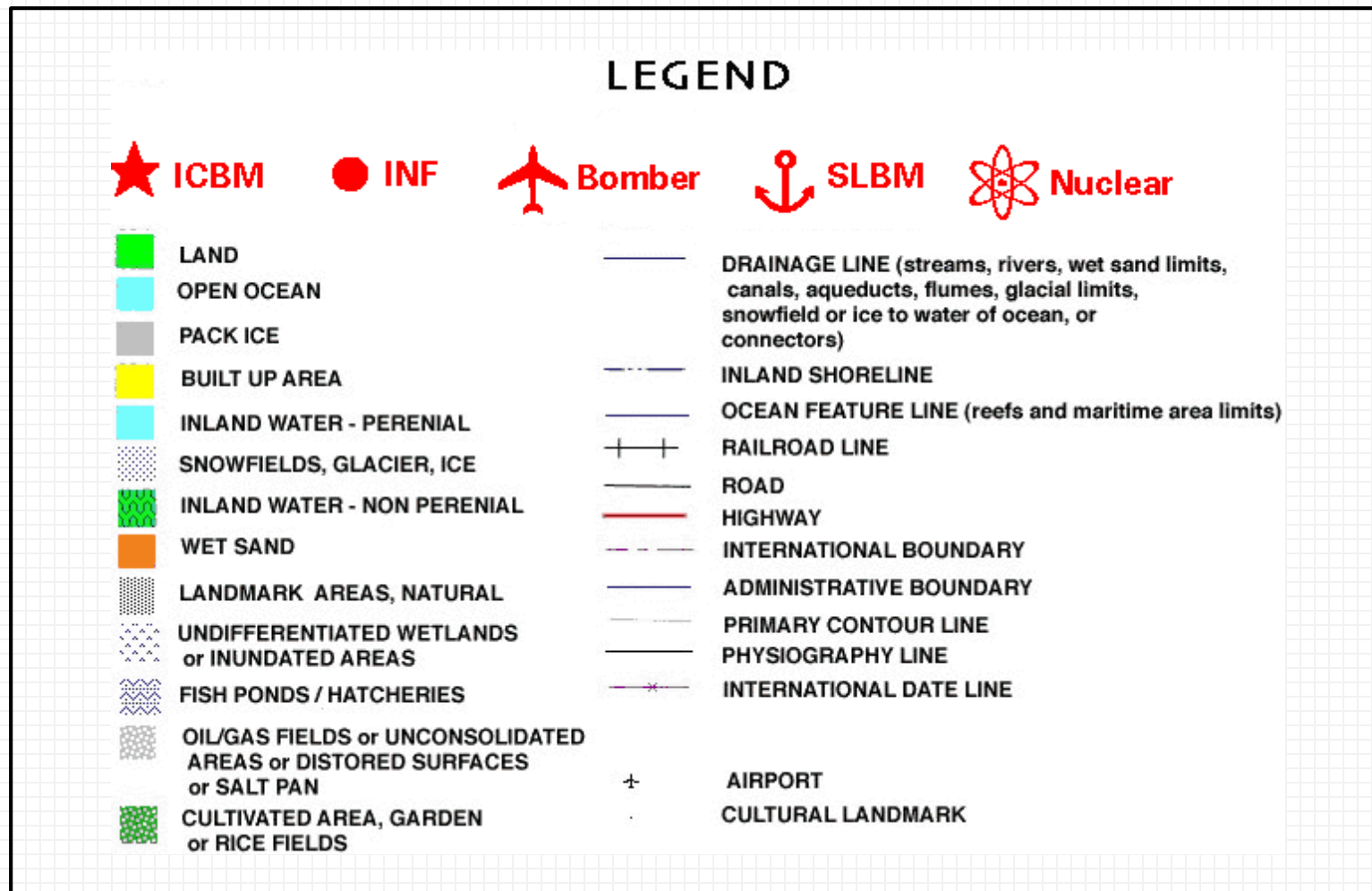
Miles







Legend

- ◆ "On maps depicting the natural environment, the extent to which a legend is needed is an indication of the degree of failure of the cartographer."
(Shelton)

Legend



Legend

-  Approved Acquisition Boundary
-  Land Owned by USFWS
-  Easement/Right of Way
-  Proposed Addition/Subject Tract



Compiled by the US Fish and Wildlife Service,
Region 5 Cartography and Spatial Data Services
Branch, Hadley, Massachusetts using USFWS
(1998) and US Geological Survey (1988) data.



MBCC APPROVED BOUNDARY



PREVIOUSLY ACQUIRED - - FEE



FOR APPROVAL - - FEE

DATE OF MBCC MEETING

Data sources - contributors

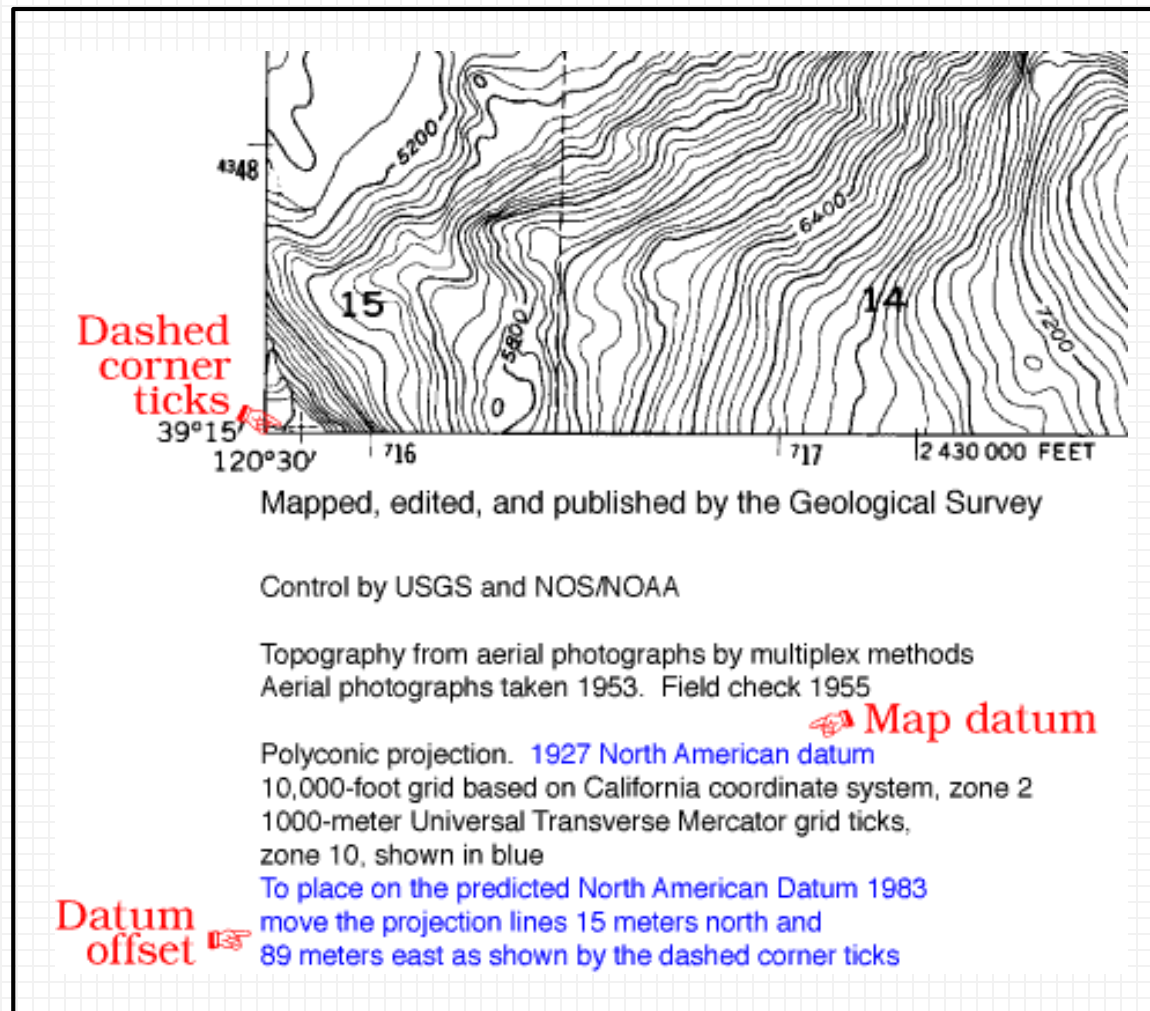
◆ lends authority to the map

COMPILED IN THE DIVISION OF REALTY
FROM SURVEYS BY USFWS AND USGS
UTM ZONE 18, NAD 1927, METERS

HADLEY, MASSACHUSETTS JANUARY, 2001
REVISED: 02/07/01

COMPILED IN THE DIVISION OF REALTY,
CARTOGRAPHY AND SPATIAL DATA SERVICES
FROM SURVEYS BY USFWS AND USGS
ADDITIONAL DATA FROM THE CITY OF VIRGINIA BEACH,
THE LANDMARK DESIGN GROUP, WILEY & WILSON, INC.,
JOHNSON, MIRMIRAN & THOMPSON, INC. & WOOLPERT LLP
UTM ZONE 18N, NAD 1983, METERS
PHOTO DATE : MARCH 06, 1994
HADLEY, MASSACHUSETTS DECEMBER 2000
REVISED : 03/07/2001

Information about the datum, projection, coordinate system



Using dates

Increasingly specific dates

1995

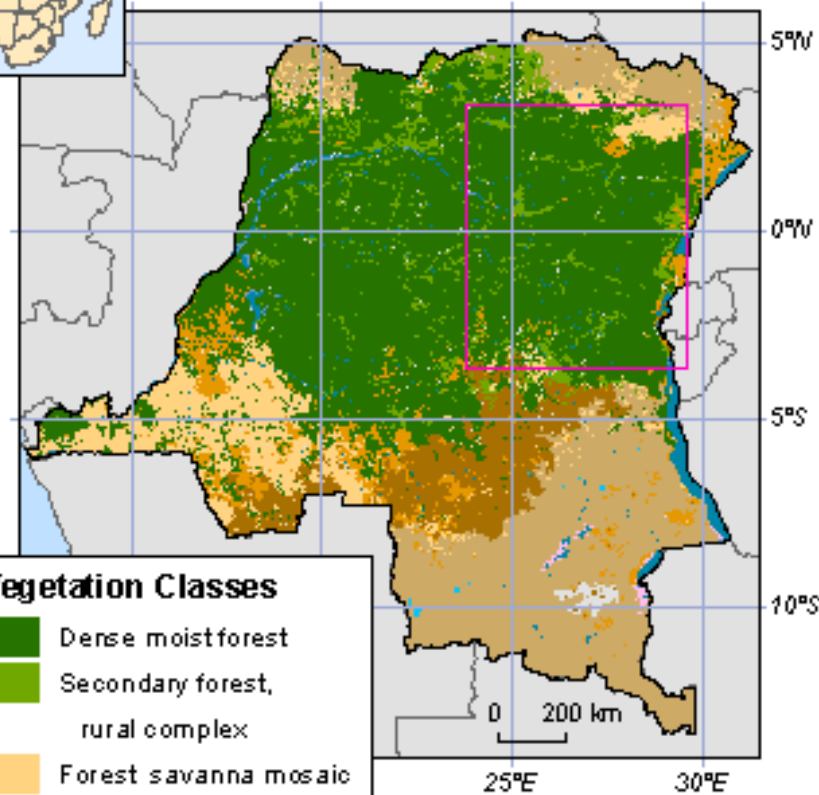
February 1995

25 February 1995

25 February 1995 20:45:16



Vegetation: Democratic Republic of Congo



Vegetation Classes

- Dense moist forest
- Secondary forest, rural complex
- Forest savanna mosaic
- Miombo woodland, dense dry forest
- Woodland, tree savanna
- Grasslands, bare soil
- Mangroves

**Enlarged Area:
National Parks in the Northeast
Congolian Lowland Forests**



Sources: TREES/JRC and World Conservation Monitoring Centre

Placement of map elements

Map intended to stand alone. All the essential elements of the map are included within its frame.



Use descriptive titles. Avoid things like "Legend" and "Map of..."

Important information not discussed in the caption must be included on the map.

The bibliographic and production data should, in most cases, be in a subordinate position on the map.

Map prepared for publication in a book or journal. The caption will serve the functions of the title and bibliographic information.



Experiment with map layouts

◆ use sketch maps



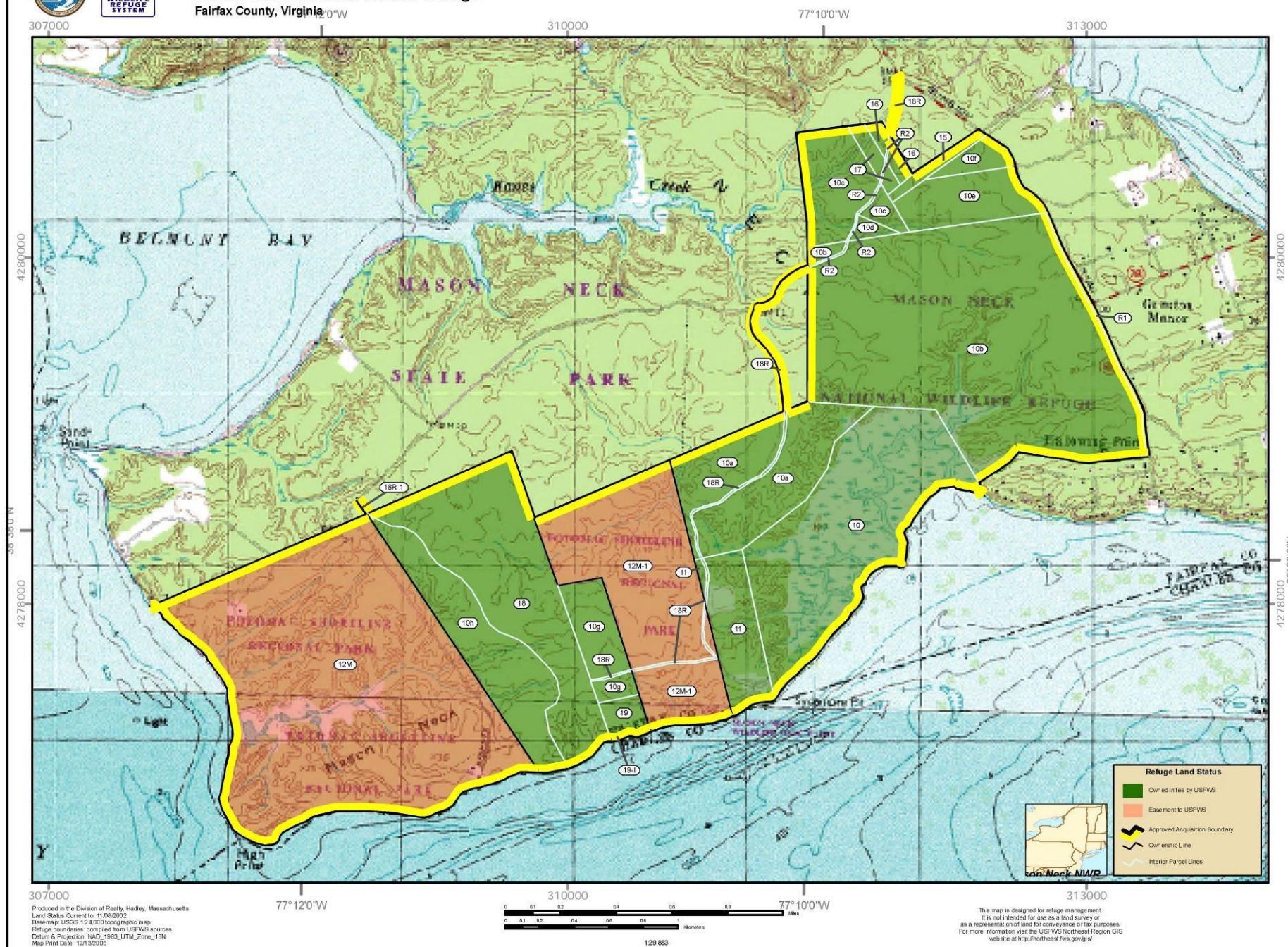


U.S. Fish & Wildlife Service

Mason Neck National Wildlife Refuge

Fairfax County, Virginia

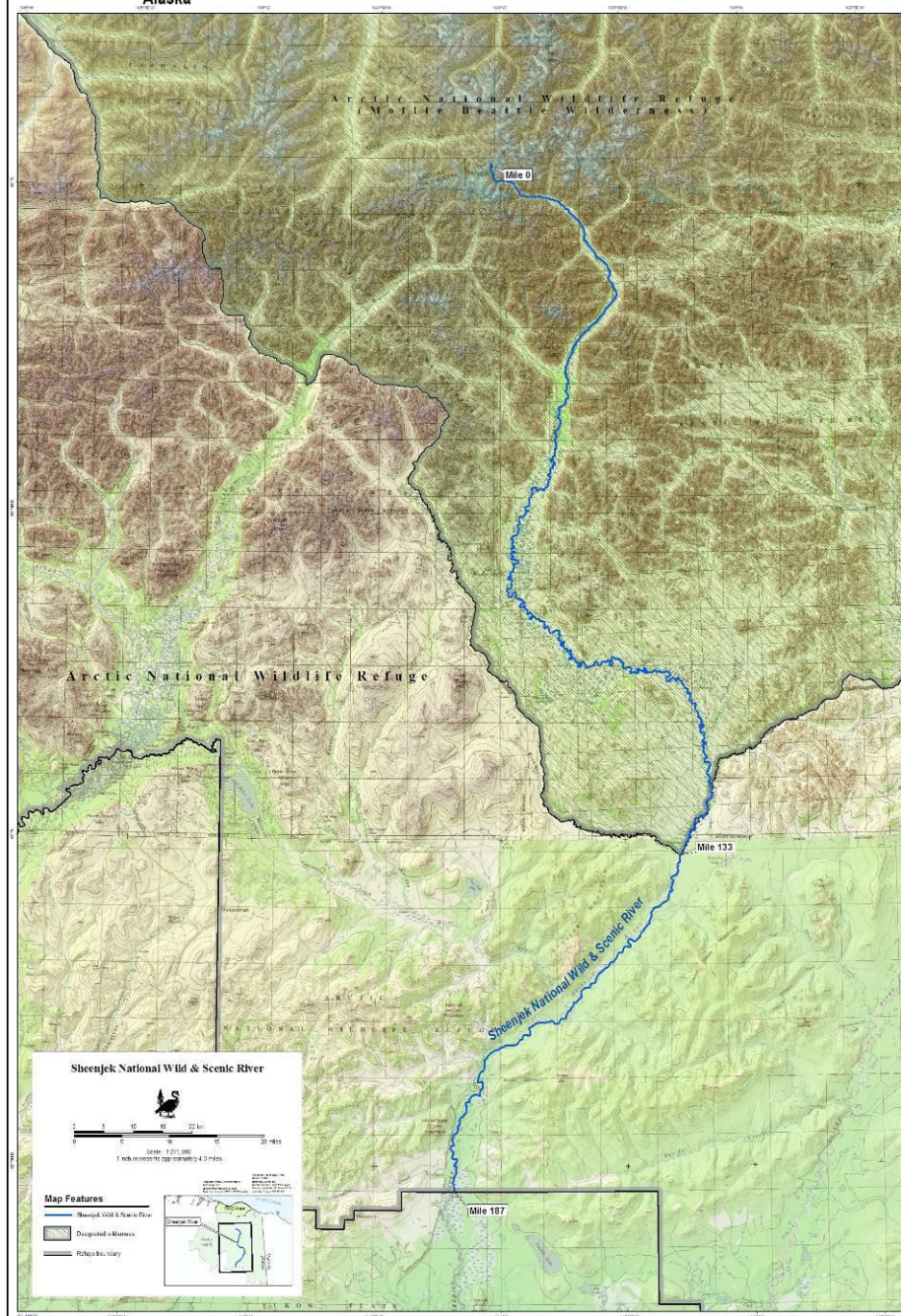
Land Status





U.S. Fish & Wildlife Service
Arctic National Wildlife Refuge
Alaska

Sheenjek National Wild & Scenic River



Remember ...

- ◆ ...there should be a defensible reason for each element placed on a map and for its composition
- ◆ ...the goal is to achieve balance (not to be confused with symmetry)
- ◆ ...sometimes, less is more

College to Careers (C2) is a WIOA Title I – financially assisted program and is therefore an equal opportunity employer/program which provides auxiliary aids and services upon request to individuals with disabilities by calling 711 or 800.648.6458 TTY. The C2 grant project (\$2,394,110) is 100% funded through the US Department of Labor's Trade Adjustment Assistance Community College and Career Training program (TC-26516-14-60-A-41). This workforce solution was funded by a grant awarded by the U.S. Department of Labor's Employment and Training Administration. The solution was created by the grantee and does not necessarily reflect the official position of the U.S. Department of Labor. The Department of Labor makes no guarantees, warranties or assurances of any kind, express or implied, with respect to such information, including any information on linked sites and including, but not limited to, accuracy of the information or its completeness, timeliness, usefulness, adequacy, continued availability or ownership. This work is licensed under the Creative Commons Attribution 4.0 International License. For more information about Creative Commons Licensing: <http://creativecommons.org/licenses/by/4.0/>.

