

Learn on Demand Myths

Myth 1: Online courses are more difficult than on-campus courses.

Reality: Online courses are equivalent to their on-campus counterparts in both difficulty and content. You will complete the same level of work, just delivered in an online format.

Myth 2: If I take an online course, I will never have to come to campus.

Reality: Though rare, it may be necessary to travel to campus once or twice per semester. Some courses have exams that must be taken in person, and others might have a resource only available at the college bookstore. Check with your professor for details.

Myth 3: I can complete my online course without my own computer or high-speed internet access.

Reality: You don't have to own a computer to enroll in online courses, but many students who try to complete online courses without their own computer and high-speed internet access have trouble performing their best. To set yourself up for success, make sure that you have reliable access to a computer with a good internet connection. Keep in mind that public computer labs may sometimes get crowded or have limited hours.

Myth 4: Online courses require less time outside of class than in-person courses.

Reality: Online courses often require more time outside of lectures and required activities. Online learners must spend time communicating with faculty, posting to discussion boards and reaching out to classmates.

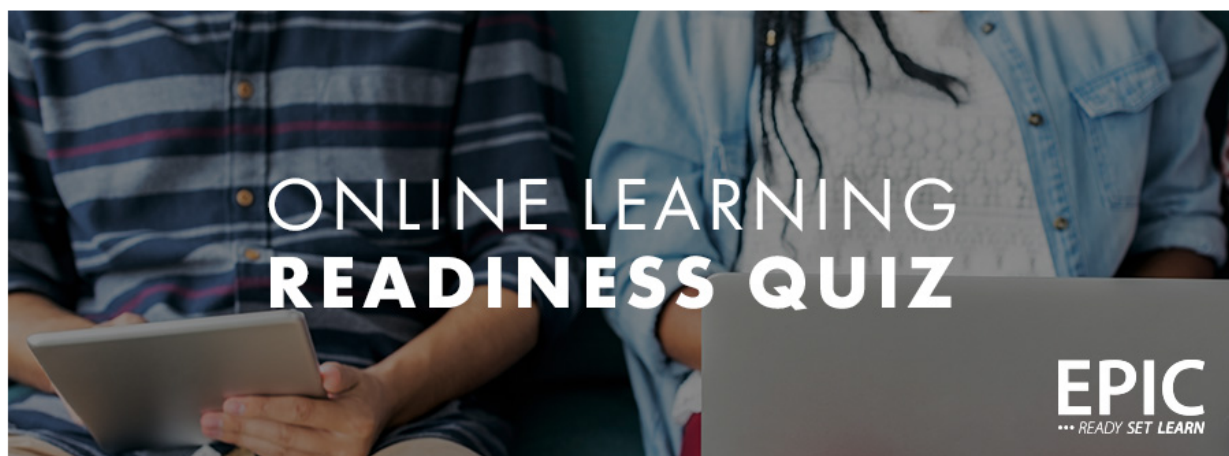
As a general rule, you should plan for 9-15 hours of time per course, per week for a semester-length course.

Myth 5: I can complete my work for an online course in any order I want and at any time.

Reality: Most online courses have similar deadlines to an in-person course, and assignments are often arranged in a sequence to maximize your learning.

Myth 6: In an online learning course, my professor will keep track of all my work.

Reality: Online learners must be comfortable working independently and managing their own time. KCTCS provides many support resources, but students must know when to reach out for help when they need it.

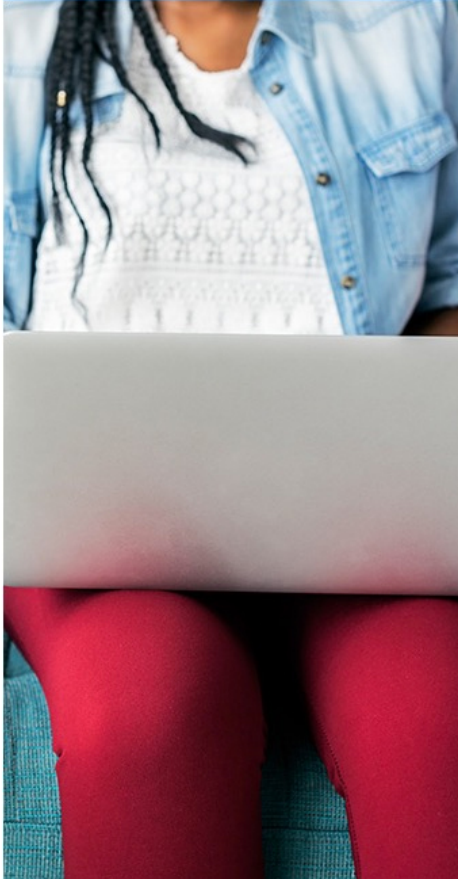


Wondering about Online Courses?

Life is busy and trying to add college classes to your already crowded schedule can be a challenge. Kentucky Community and Technical Colleges offer a wide range of online classes that can be completed on your own time – but are they a good fit for you? Take this quiz to find out if you are ready for online courses and get access to our free Online Learning Guide!

[TAKE THE QUIZ ►](#)

ONLINE LEARNING READINESS QUIZ



QUESTION #1

I have access to a computer.

- ☒ 1 Never
- ☐ 2 A few times per month
- ☐ 3 Once per week
- ☐ 4 A few times a week
- ☐ 5 Every day

FYI Regular Computer Access: Computer access is important for EPIC Learn on Demand students. Make sure you can plan to use a computer, connected to the internet, every day either at home or a nearby location such as a library.

NEXT ►

ONLINE LEARNING READINESS QUIZ



QUESTION #2

I have access to the internet other than through my smartphone.

- ☐ 1 Never
- ☒ 2 A few times per month
- ☐ 3 Once per week
- ☐ 4 A few times a week
- ☐ 5 Every day

FYI Broadband Internet: EPIC Learn on Demand classes require high-speed internet access. You should plan for how you can get online to complete your coursework. Consider places where internet access might be available, or invest in a broadband connection.

◀ BACK

NEXT ▶

ONLINE LEARNING READINESS QUIZ



QUESTION #3

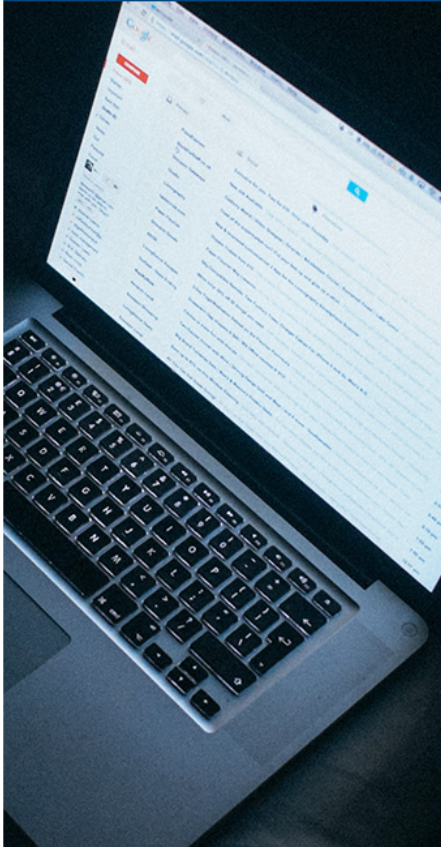
I browse the internet.

- ☐ 1 Never
- ☐ 2 A few times per month
- ☐ 3 Once per week
- ☐ 4 A few times a week
- ☒ 5 Every day

◀ BACK

NEXT ▶

ONLINE LEARNING READINESS QUIZ



QUESTION #4

I use email.

- ☒ 1 Never
- ☐ 2 A few times per month
- ☐ 3 Once per week
- ☐ 4 A few times a week
- ☐ 5 Every day

◀ BACK

NEXT ▶

ONLINE LEARNING READINESS QUIZ



QUESTION #5

I use Microsoft Office products such as Word, PowerPoint, Excel.

- ☐ 1 Never
- ☐ 2 A few times per month
- ☐ 3 Once per week
- ☒ 4 A few times a week
- ☐ 5 Every day

FYI Computer literacy: To make the most out of EPIC Learn on Demand classes, students should have an understanding of basic computer technology. If you need to brush up on your computer skills, check out [this site](#) or similar sites.

◀ BACK

NEXT ▶

ONLINE LEARNING READINESS QUIZ



QUESTION #6

I am motivated to develop computer skills.

Strongly
Disagree

Disagree

Unsure

Agree

Strongly
Agree

1

2

3

4

5

◀ BACK

NEXT ▶

ONLINE LEARNING READINESS QUIZ



QUESTION #7

I enjoy working on my own.

Strongly
Disagree

Disagree

Unsure

Agree

Strongly
Agree

1

2

3

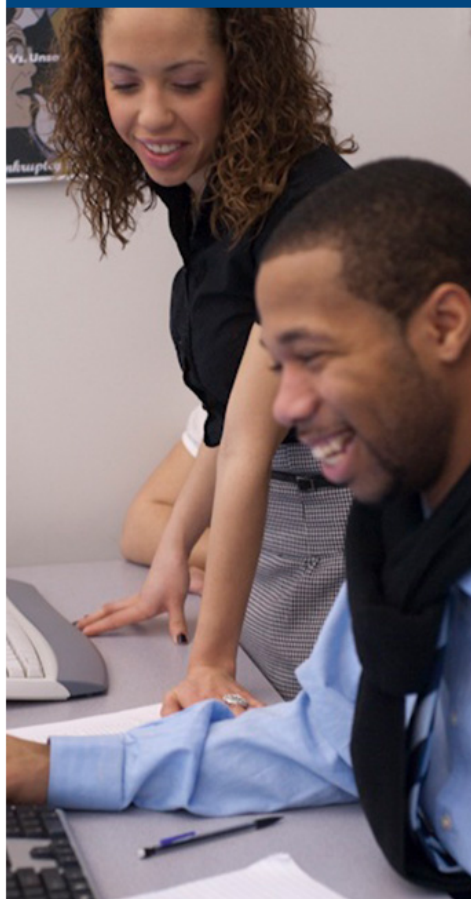
4

5

◀ BACK

NEXT ▶

ONLINE LEARNING READINESS QUIZ



QUESTION #8

I can seek assistance when I am having trouble solving a problem.

Strongly
Disagree

Disagree

Unsure

Agree

Strongly
Agree

1

2

3

4

5

◀ BACK

NEXT ▶

ONLINE LEARNING READINESS QUIZ



QUESTION #9

I am comfortable working on my own to fix a problem with my technology.

Strongly
Disagree

Disagree

Unsure

Agree

Strongly
Agree

1

2

3

4

5

◀ BACK

NEXT ▶

ONLINE LEARNING READINESS QUIZ



QUESTION #10

I am an organized person.

Strongly
Disagree

Disagree

Unsure

Agree

Strongly
Agree

1

2

3

4

5

FYI

Working style: Students who take classes with EPIC must often work independently, manage their own time, and reach out for help when they need it.

◀ BACK

NEXT ▶

ONLINE LEARNING READINESS QUIZ



QUESTION #11

I can get to campus once or twice a semester if I have to.

Strongly
Disagree

Disagree

Unsure

Agree

Strongly
Agree

1

2

3

4

5

FYI Transportation: Sometimes, EPIC Learn on Demand classes will require a student to attend a proctored exam, or purchase a textbook from the college bookstore. Some Learn on Demand students might need to travel to campus once or twice per semester.

◀ BACK

NEXT ▶

ONLINE LEARNING READINESS QUIZ

EPIC
... READY SET LEARN



QUESTIONS 12-17

YES

NO

I am currently working part time (less than 30 hours per week)

YES

NO

I am currently working full time or more than one job (more than 30 hours per week)

YES

NO

I am the primary caregiver/guardian for a child

YES

NO

I am the primary caregiver/guardian for an elder

YES

NO

I am a single parent

YES

NO

I have a flexible daily schedule

FYI

Time constraints: To succeed in EPIC Learn on Demand classes, students must have sufficient time to complete coursework and assessments: at least 9-15 hours per course. Plan for how you will be able to accommodate this work into your schedule.

◀ BACK

NEXT ▶

ONLINE LEARNING READINESS QUIZ

EPIC
... READY SET LEARN



QUESTION #18

YES

NO

Do you live in the state of Kentucky?

FYI Paying for College: In addition to Federal Pell Grants (find out more at: <https://fafsa.ed.gov/>), the state of Kentucky has agencies and resources available to assist you with your education. The Kentucky Higher Education Assistance Authority (KHEAA) is a good place to start: <https://www.kheaa.com/website/kheaa/home>.

◀ BACK

NEXT ▶

ONLINE LEARNING READINESS QUIZ

EPIC
... READY SET LEARN



QUESTION #19

YES

NO

Are you unemployed?

FYI Paying for College: Some employers offer tuition assistance if the education program is related to your job. Ask your human resources office if this benefit is available through your company.

◀ BACK

NEXT ▶

ONLINE LEARNING READINESS QUIZ

EPIC
... READY SET LEARN



QUESTION #20

YES

NO

Do you live in Bell, Clay, Harlan, Knox, Leslie, Letcher, Perry, or Whitley County and receive or qualify for Supplemental Nutritional Assistance (SNAP) benefits?

FYI Paying for College: Paths2Promise is a program to help individuals in those counties prepare for a new career in a high-demand occupation. Find out more information here: <http://www.ekcep.org/paths-2-promise>

◀ BACK

NEXT ▶

ONLINE LEARNING READINESS QUIZ

EPIC
... READY SET LEARN



QUESTION #21

YES

NO

Have you already earned an Associate degree or higher?

FYI Paying for College: The Work Ready KY scholarship may be able to help you earn credentials for work in high demand fields. See the Work Ready KY scholarship page on KHEAA's website:
https://www.kheaa.com/website/kheaa/work_ready?main=1

◀ BACK

NEXT ▶



You should contact epicsuccess@kctcs.edu to find the right fit for your needs. Check your results below for specific topics to bring up in the conversation.

Tips based on your answers:

- ① **Regular Computer Access:** Computer access is important for EPIC Learn on Demand students. Make sure you can plan to use a computer, connected to the internet, every day either at home or a nearby location such as a library.
- ① **Broadband Internet:** EPIC Learn on Demand classes require high-speed internet access. You should plan for how you can get online to complete your coursework. Consider places where internet access might be available, or invest in a broadband connection.
- ① **Computer literacy:** To make the most out of EPIC Learn on Demand classes, students should have an understanding of basic computer technology. If you need to brush up on your computer skills, check out <https://www.gcflearnfree.org/computerbasics/> or similar sites.
- ① **Working style:** Students who take classes with EPIC must often work independently, manage their own time, and reach out for help when they need it.
- ① **Transportation:** Sometimes, EPIC Learn on Demand classes will require a student to attend a proctored exam, or purchase a textbook from the college bookstore. Some Learn on Demand students might need to travel to campus once or twice per semester.
- ① **Time constraints:** To succeed in EPIC Learn on Demand classes, students must have sufficient time to complete coursework and assessments: at least 9-15 hours per course. Plan for how you will be able to accommodate this work into your schedule.
- ① **Paying for college:** Each Kentucky Community and Technical College has a financial aid office staffed with knowledgeable advisors who can help you identify financial aid options to pay for college. Find out more: https://kctcs.edu/affording_college/paying_for_college/

START WITH THESE HELPFUL RESOURCES ►