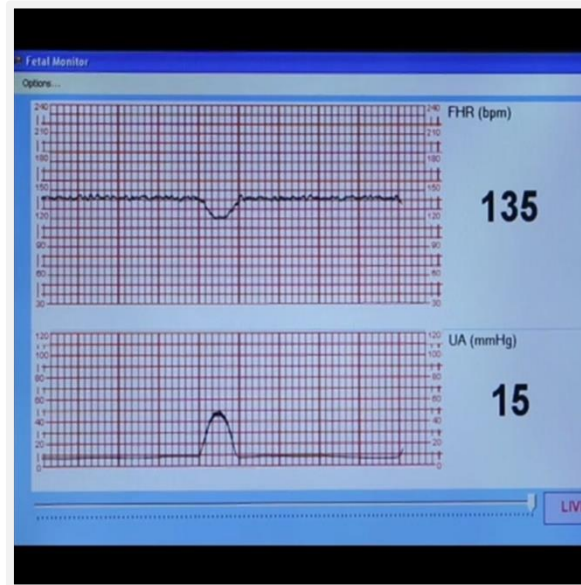


# OB FETAL MONITORING

Estimated Time: 15 minutes



Scan to Begin



## SCENARIO OVERVIEW

In this serious game, students interpret four fetal monitoring strips and answer associated multiple choice questions. The purpose of this game is to practice interpreting fetal monitoring strips and select appropriate interventions, before caring for a patient in labor in simulation and/or clinical practice. See Overview of Serious Games document for further faculty instructions.

## INSTRUCTIONS

Instruct the student(s) to scan the Start QR Code to begin the game. Stars are earned for each correct answer with a final score provided at the end of the game. Students may be instructed to obtain a screen shot of their final score to provide to the instructor.

## LEARNING OBJECTIVES

1. Correctly interpret fetal monitoring strips
2. Select appropriate nursing care

## CURRICULUM MAPPING

### WTCS NURSING PROGRAM OUTCOMES

- Plan nursing care during uncomplicated labor and delivery

## SURVEY

Print this page and provide to students.

Students, please complete a brief (2-3 minute) survey regarding your experience with this ARISE simulation. There are two options:

1. Use QR Code: Survey
  - a. Note: You will need to download a QR Code reader/scanner onto your own device (smartphone or tablet). There are multiple free scanner apps available for both Android and Apple devices from the app store.
  - b. This QR Code will not work in the ARIS app.



2. Copy and paste the following survey link into your browser.
  - a. [https://ircvtc.co1.qualtrics.com/SE/?SID=SV\\_6Mwfv98ShBfRnBX](https://ircvtc.co1.qualtrics.com/SE/?SID=SV_6Mwfv98ShBfRnBX)

## REFERENCES

- Funai, E, and Norwitz, E (2017). Management of normal labor and delivery. In: UptoDate, Lockwood, C (Ed), UptoDate, Waltham, MA. (Accessed on July 26, 2017)
- Sweha, A., and Hacker, TW. (1999) Interpretation of the electronic fetal heart rate during labor. American Family Physician, 1; 59(9): 2487-500. Accessed at <https://www.ncbi.nlm.nih.gov/pubmed/10323356?dopt=Abstract>



This work by the Wisconsin Technical College System TAACCCT IV Consortium is licensed under a Creative Commons Attribution 4.0 International license.

Third party marks and brands are the property of their respective holders. Please respect the copyright and terms of use on any webpage links that may be included in this document.

This workforce product was funded by a grant awarded by the U.S. Department of Labor's Employment and Training Administration. The product was created by the grantee and does not necessarily reflect the official position of the U.S. Department of Labor. The U.S. Department of Labor makes no guarantees, warranties, or assurances of any kind, express or implied, with respect to such information, including any information on linked sites and including, but not limited to, accuracy of the information or its completeness, timeliness, usefulness, adequacy, continued availability, or ownership. This is an equal opportunity program. Assistive technologies are available upon request and include Voice/TTY (771 or 800-947-6644).c