

Grant Title: **Accelerated Pathways in Advanced Manufacturing (APAM)**

Author: **Community College of Rhode Island**

Link: <http://www.ccri.edu/>

**Document:** \_\_\_\_\_

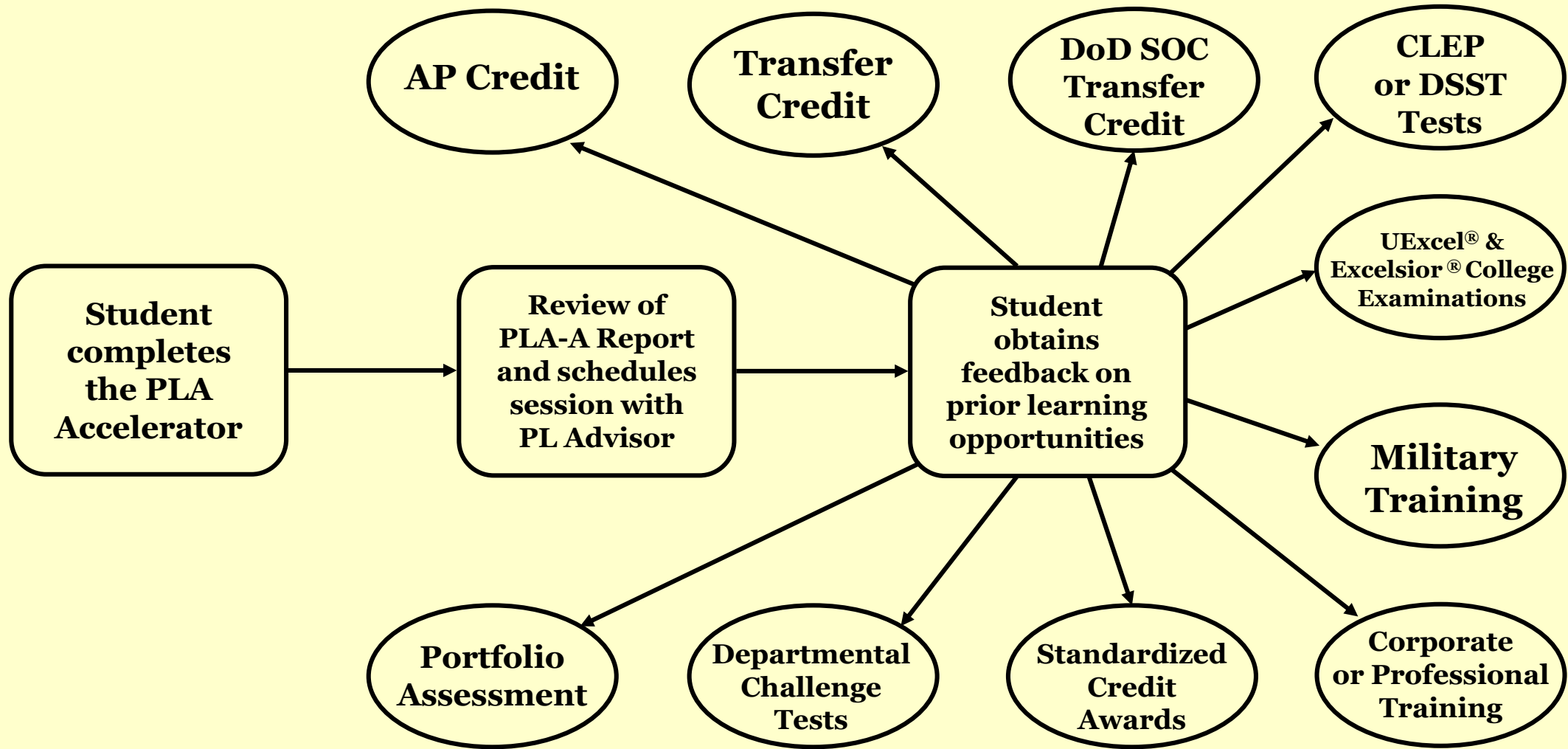
**DOL Disclaimer Statement:**



“This workforce product was funded by a grant awarded by the U.S. Department of Labor’s Employment and Training Administration. The product was created by the grantee and does not necessarily reflect the official position of the U.S. Department of Labor. The U.S. Department of Labor makes no guarantees, warranties, or assurances of any kind, express or implied, with respect to such information, including any information on linked sites and including, but not limited to, accuracy of the information or its completeness, timeliness, usefulness, adequacy, continued availability, or ownership.”



Unless otherwise noted - this work is licensed under the Creative Commons Attribution 4.0 International License. To view a copy of this license, visit <http://creativecommons.org/licenses/by/4.0/>.



GED College Ready Plus, Advanced Placement (AP),  
International Baccalaureate Diploma Program (IB),  
College Level Examination Program (CLEP),  
DoD Servicemembers Opportunity College (DoD SOC),  
and DANTES Subject Standardized Test (DSST)

American Council on Education (ACE)  
recommended credit transcripts  
regarding Professional, Military, and  
Corporate, and Training Programs, as  
well as some UExcel<sup>®</sup> exams

Corporate & Professional Training not  
recognized by ACE, Standardized  
Credit Awards, Departmental  
Challenge Tests, some  
UExcel<sup>®</sup> exams,  
Prior Learning  
Assessments  
(PLA)

**Accelerated  
pathways  
that have  
the broadest  
recognition  
for transfer  
of credit**

**Accelerated pathway  
options that have the least  
recognition for transfer of  
credit**

**Accelerated pathway  
options that have broad  
recognition for transfer  
of credit**

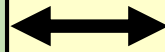
**Academic  
Affairs**

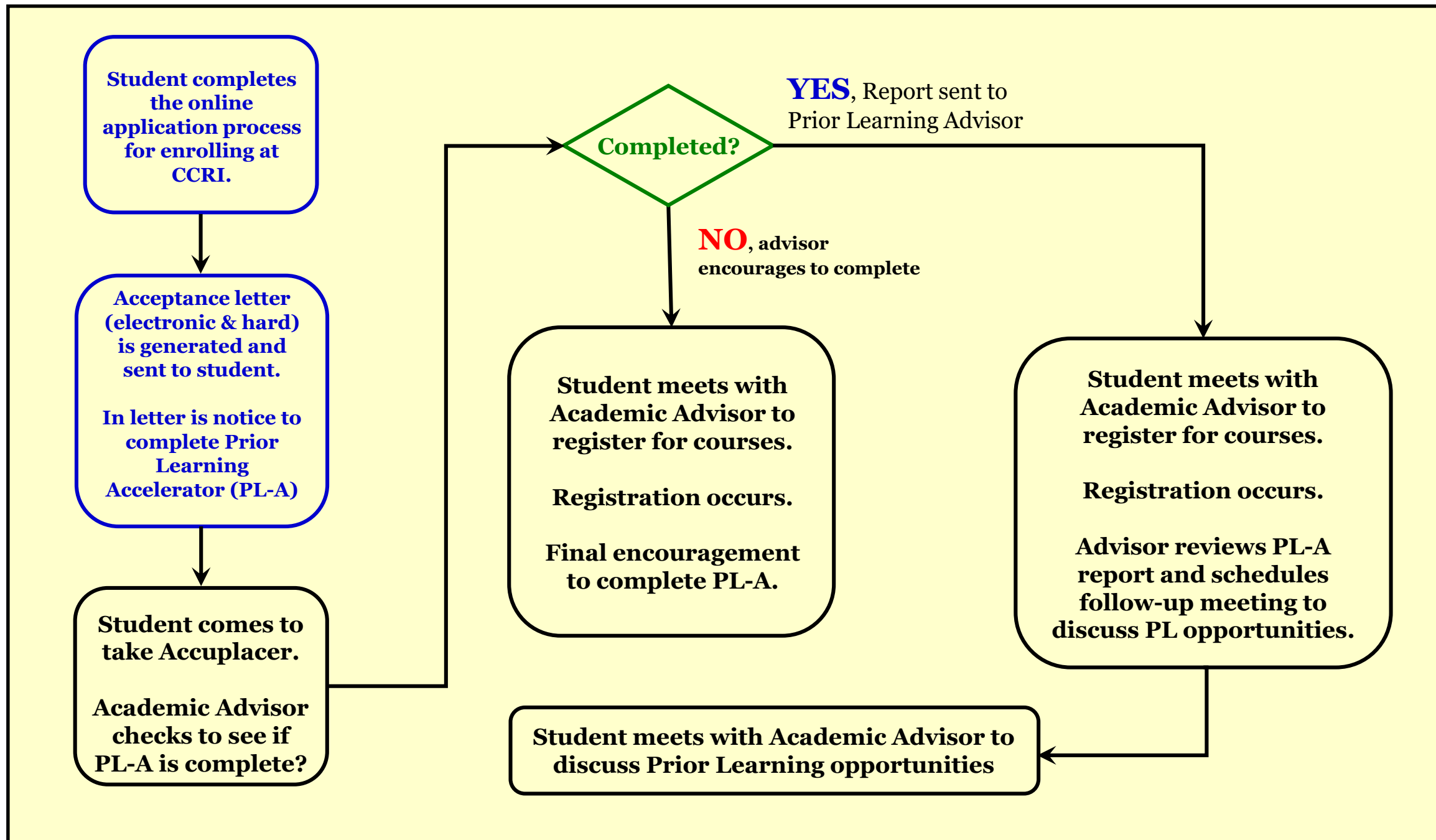
**Student  
Affairs**

**Dean – Arts, Humanities, &  
Social Sciences**  
**Dean – Business, Science, &  
Technology**  
**Dean – Health &  
Rehabilitation Sciences**  
**Assistant Dean - Nursing**

**Prior  
Learning**

**Admissions**  
**Advising & Counseling**  
**Records**





Student completes the online application process for enrolling at CCRI.

Acceptance letter (electronic & hard) is generated and sent to student.

In letter is notice to complete Prior Learning Accelerator (PL-A)

Student comes to take Accuplacer.

Academic Advisor checks to see if PL-A is complete?

Completed?

YES, Report sent to Prior Learning Advisor

NO, advisor encourages to complete

Student meets with Academic Advisor to register for courses.

Registration occurs.

Final encouragement to complete PL-A.

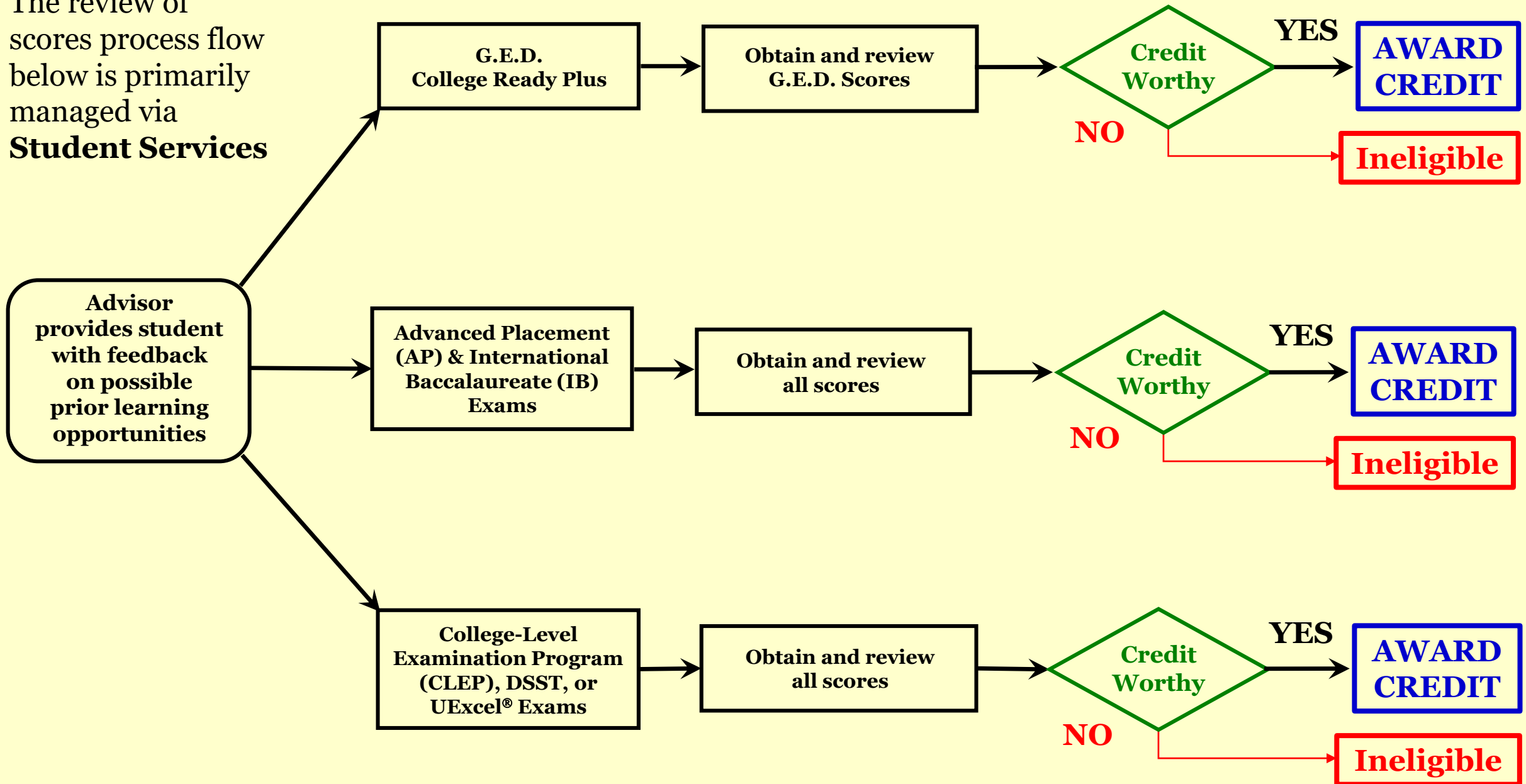
Student meets with Academic Advisor to register for courses.

Registration occurs.

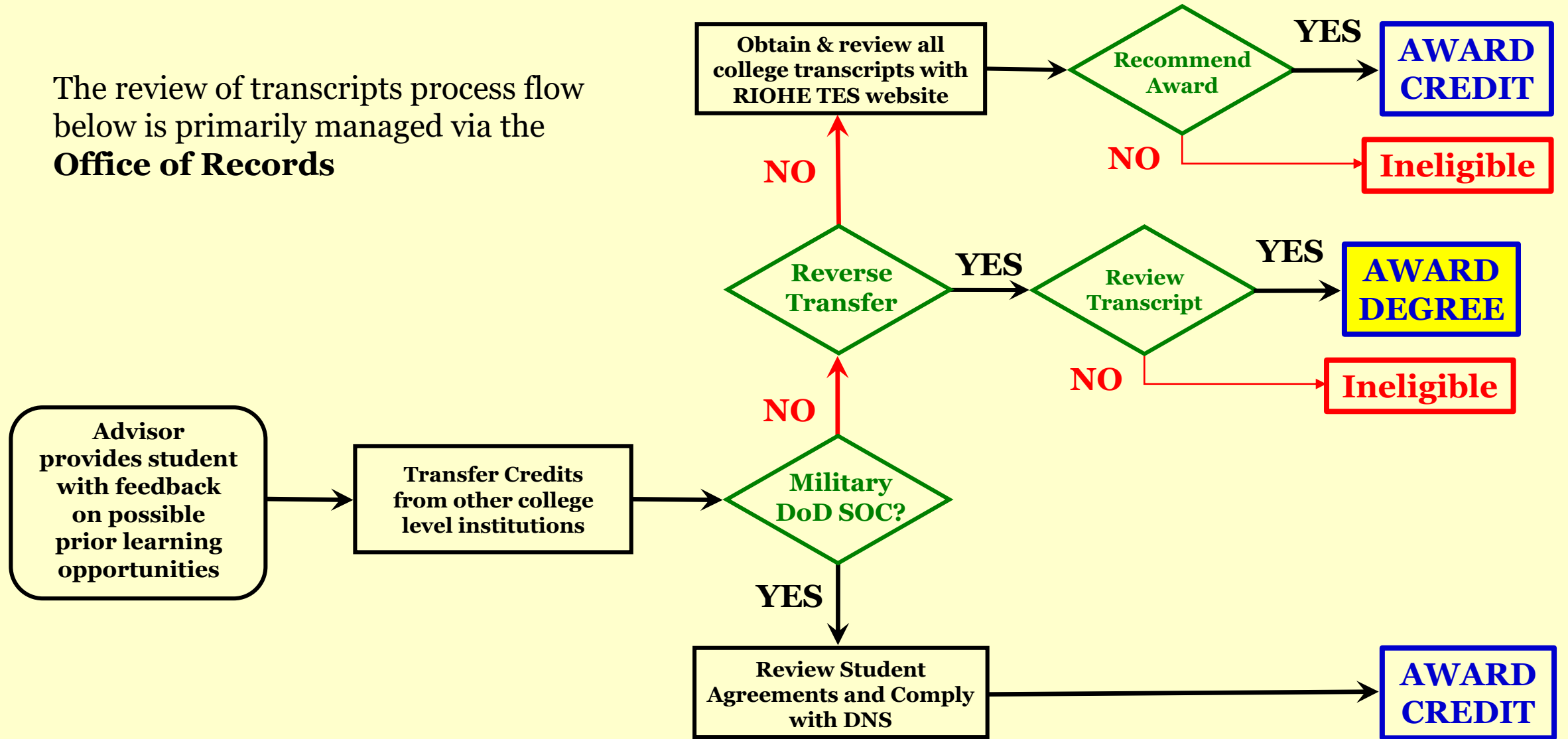
Advisor reviews PL-A report and schedules follow-up meeting to discuss PL opportunities.

Student meets with Academic Advisor to discuss Prior Learning opportunities

The review of scores process flow below is primarily managed via **Student Services**



The review of transcripts process flow below is primarily managed via the **Office of Records**



The review of scores process flow below is primarily managed via the **Dean of Prior Learning**

