



NCTC IT Career Connection Center

Located across the street from the Corinth Campus
1400 North Corinth Street
Suites 101-102
Corinth, Texas 76208

- Tutoring Lab
- Education & Employment Coaches
- Industry Certification Testing Ctr
- Assistance with Job Placement & Interview Preparation



NORTH CENTRAL TEXAS COLLEGE
nctc.edu

NCTC IT Career Connection Center
(940)498-6440
ITCCC@nctc.edu



<http://www.nctc.edu/CTE/CITE/gaming.aspx>



The Rural Information Technology Alliance (RITA) is a four community college consortium involving North Central Texas College, as well as Central Lakes College, Ridgewater College, and Pine Technical and Community College, funded by the Department of Labor through the Trade Adjustment Assistance Community College and Career Training (TAACCCT) grant program. This work force product was funded by a grant awarded by the U.S. Department of Labor's Employment and Training Administration. The product was created by the grantee and does not necessarily reflect the official position of the U.S. Department of Labor. The U.S. Department of Labor makes no guarantees, warranties, or assurances of any kind, express or implied, with respect to such information, including any information on linked sites and including, but not limited to, accuracy of the information or its completeness, timeliness, usefulness, adequacy, continued availability, or ownership. North Central Texas College does not discriminate on the basis of race, color, national origin, gender, religion, age, or disability in the employment or the provision of service.



NORTH CENTRAL TEXAS COLLEGE

Computer Information
Technology

Gaming & Application Programming

Associate of Applied Science
Degree and Certificate



Gaming/Application Programming Associate of Applied Science Degree

Students enrolling in a CITE program must be able to type 40 wpm to enter the program.

FIRST SEMESTER:

ARTC1325	Introduction to Computer Graphics	3 SCH
GAME1306	Design and Creation of Games	3 SCH
ITSE 2321	Object-Oriented Program	3 SCH
ITSW1307	Introduction to Database	3 SCH
GAME1309	Introduction to Animation Programming	3 SCH

TOTAL 15 SCH

SECOND SEMESTER:

GAME1343	Game and Simulation Programming I	3 SCH
ITSE1391	Special Topics - Android Programming	3 SCH
EECT1300	Technical Customer Service	3 SCH
GAME1328	Video Game Design	3 SCH
ITSE2310	iOS Application Programming	3 SCH

TOTAL 15 SCH

THIRD SEMESTER:

IMED1345	Interactive Digital Media I	3 SCH
GAME2342	Game Development Using C++	3 SCH
ITSE2317	Java Programming	3 SCH
GAME1303	Introduction to Game Design and Development	3 SCH
ENGL1301	Composition I	3 SCH

TOTAL 15 SCH

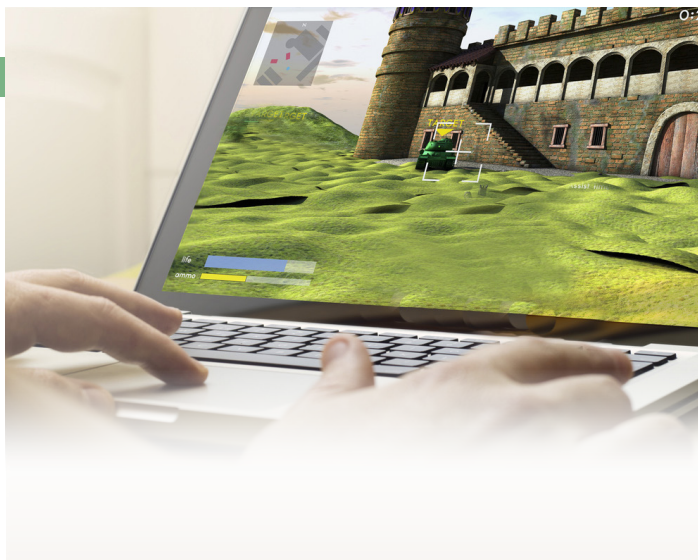
FOURTH SEMESTER:

MATH1332	Contemporary Mathematics	3 SCH
ARTS1301	Art Appreciation	3 SCH
GOVT2305	Federal Government	3 SCH
ENGL2311	Technical & Business Writing	3 SCH
GAME2308	Portfolio for Game Development	3 SCH

TOTAL 15 SCH

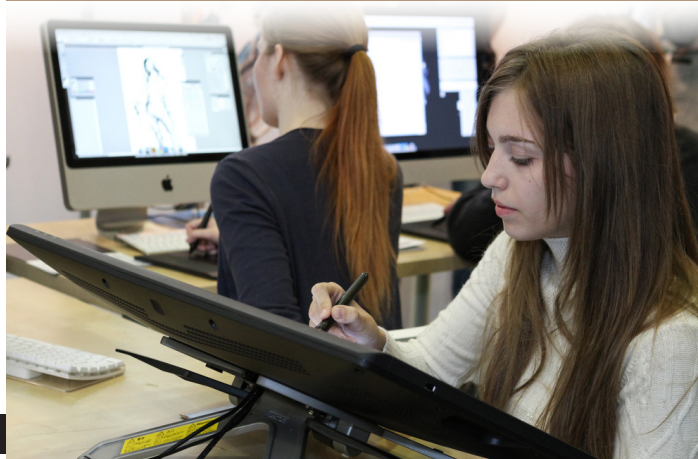
TOTAL CREDIT HOURS 60

GAME2308 will constitute the capstone experience for this program.



The Gaming & Application Programming Associate of Applied Science Degree and the one-year certificate at NCTC are designed to prepare students for a variety of careers in gaming and mobile app design. The curriculum provides learning and hands-on training in a variety of skills related to this exciting field, including game development, application programming, animation programming and video game design.

Upon completion of this program, students can seek gaming companies and businesses looking for multimedia artists and animators, graphic designers, video game developers, and application programmers.



Game Design Certificate

Students enrolling in a CITE program must be able to type 40 wpm to enter the program.

FIRST SEMESTER:

ARTC1325	Introduction to Computer Graphics	3 SCH
GAME1306	Design and Creation of Games	3 SCH
ITSE 2321	Object-Oriented Program	3 SCH
ITSW1307	Introduction to Database	3 SCH
GAME1309	Introduction to Animation Programming	3 SCH

TOTAL 15 SCH

SECOND SEMESTER:

GAME1343	Game & Simulation Programming I	3 SCH
ITSE1391	Special Topics - Android Programming	3 SCH
EECT1300	Technical Customer Service	3 SCH
GAME1328	Video Game Design	3 SCH
ITSE2310	iOS Application Programming	3 SCH

TOTAL 15 SCH

TOTAL CREDIT HOURS 30 SCH

A comprehensive program exam will constitute the capstone experience for this certificate. Students must pass the exam with a score of 70 or higher.

