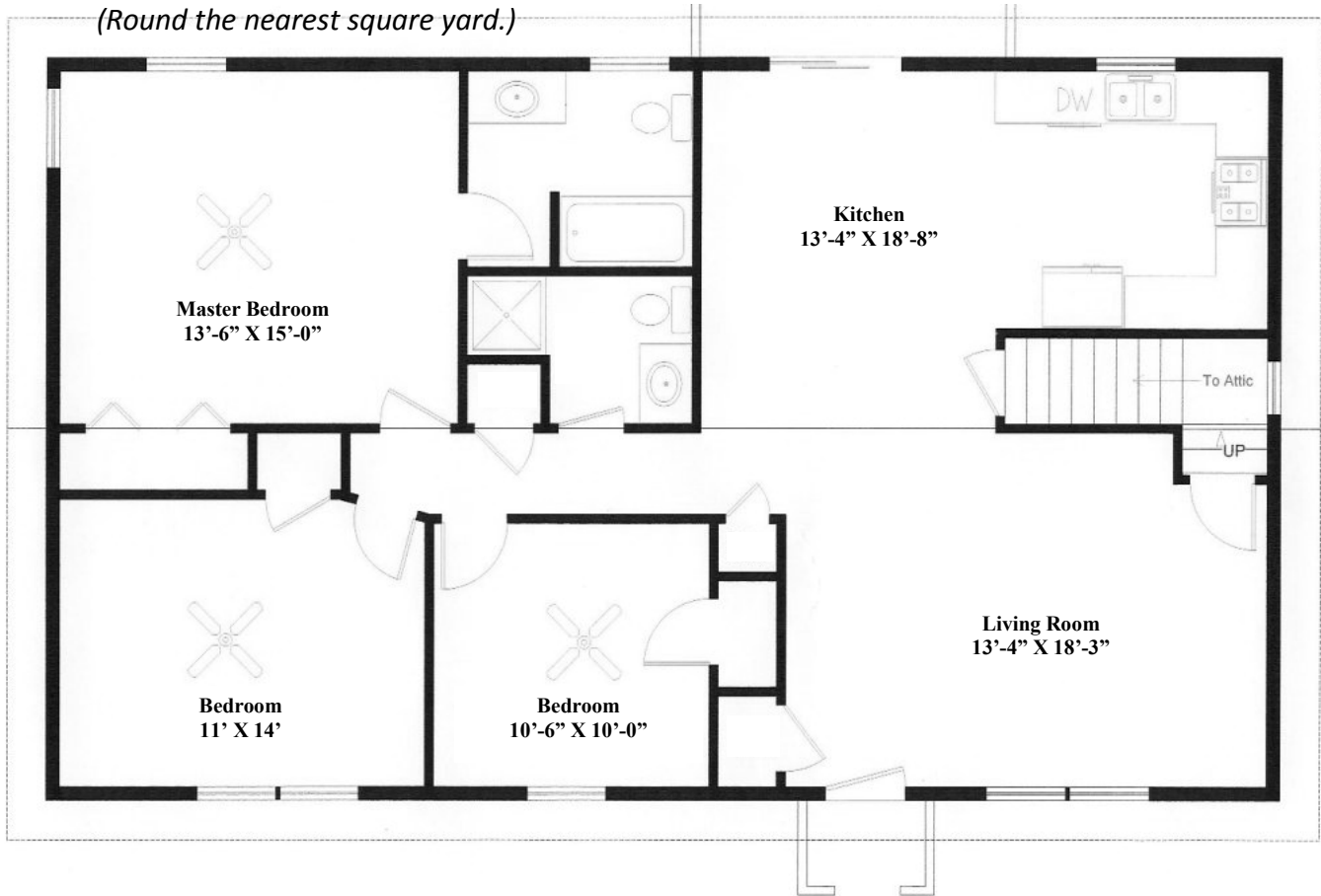


Practical Problems

1. Calculate the amount of carpet needed to cover the three bedrooms using the following floor plan.

(Round the nearest square yard.)



This work is licensed under a Creative Commons Attribution 4.0 International License. To view a copy of this license, visit [Creative Commons](https://creativecommons.org/licenses/by/4.0/).

The GCMCA program at Cincinnati State is an equal opportunity program, auxiliary aids and services are available upon request to individuals with disabilities. This workforce solution was funded by a grant awarded under the Trade Adjustment Community College and Career Training Grants as implemented by the U.S. Dept. of Labor's Employment and Training Administration.