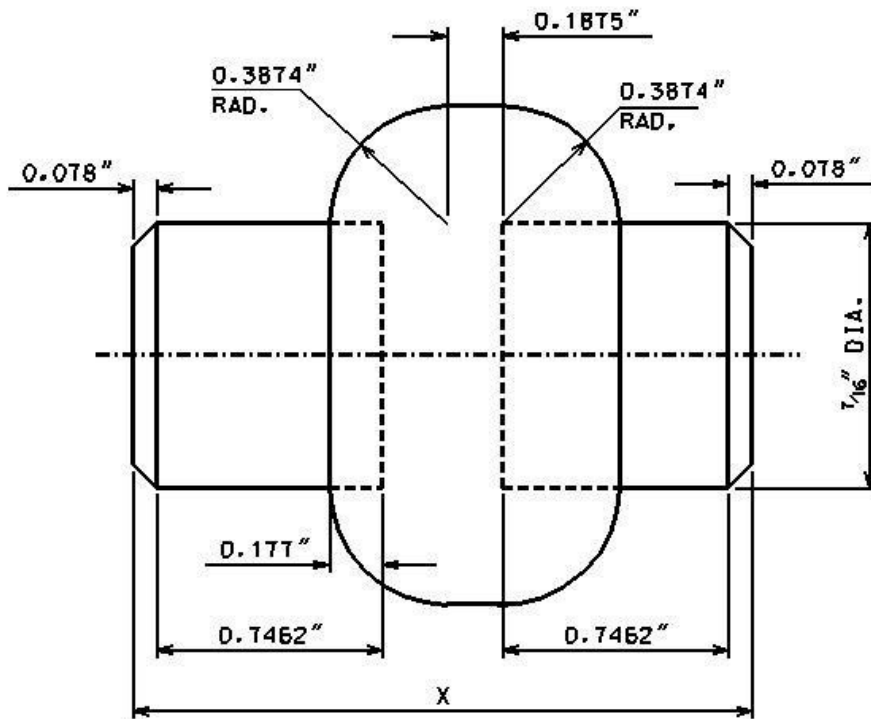
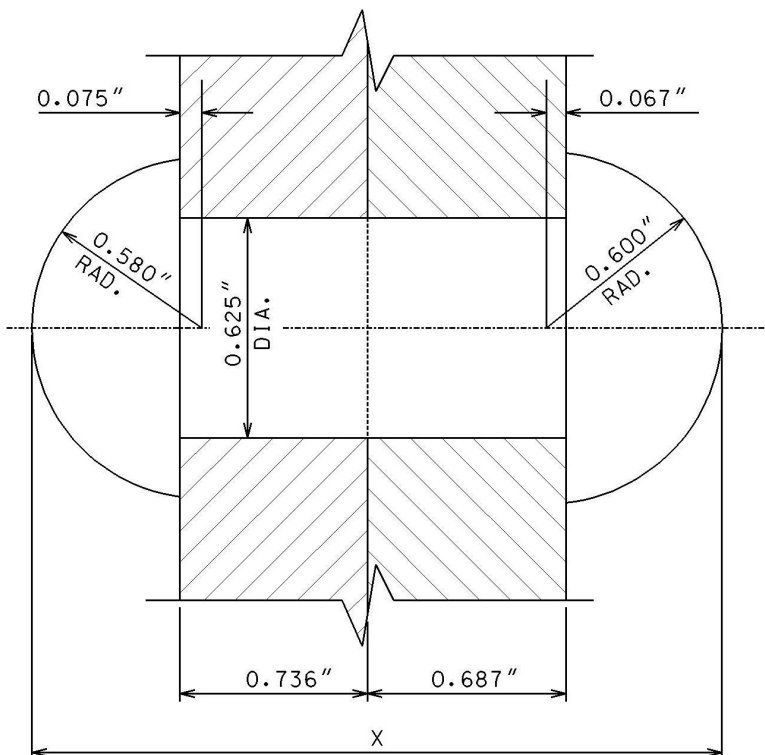


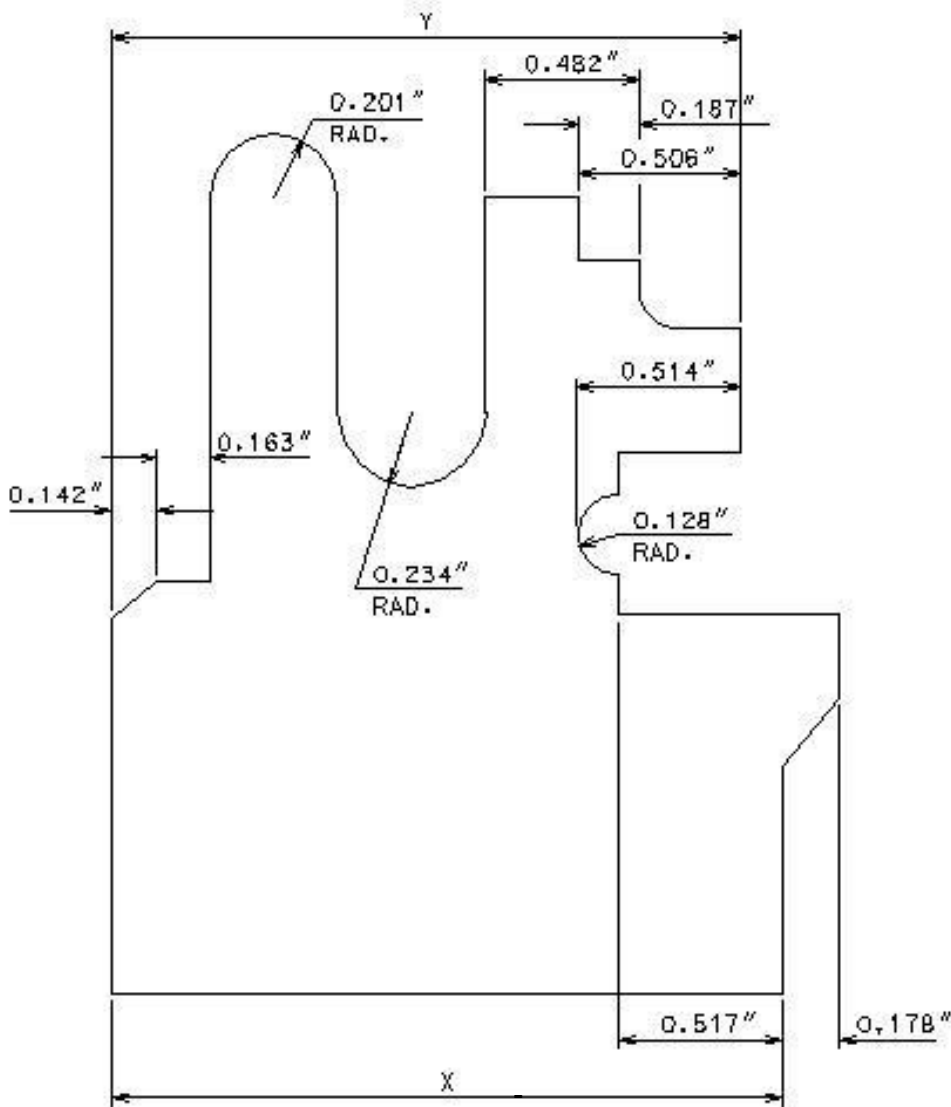
1. Find the total length X of the assembled unit shown.



2. Find the total length X of the buttonhead assembled rivet shown.



3. Find dimensions X and Y of the profile gage shown.



4. Complete the following invoice for flooring.

Amount	Unit Price	Subtotal
$3\frac{3}{4} \text{ ft}^2$	\$12.37 per $\text{ft}^2 =$	
$10\frac{5}{6} \text{ ft}^2$	\$16.25 per $\text{ft}^2 =$	
$32\frac{3}{4} \text{ ft}^2$	\$9.95 per $\text{ft}^2 =$	
$15\frac{2}{3} \text{ ft}^2$	\$17.75 per $\text{ft}^2 =$	
<b>TOTAL =</b>		



This work is licensed under a Creative Commons Attribution 4.0 International License. To view a copy of this license, visit [Creative Commons](https://creativecommons.org/licenses/by/4.0/).

This workforce solution was funded by a grant awarded by the U.S. Department of Labor's Employment and Training Administration. The solution was created by the grantee and does not necessarily reflect the official position of the U.S. Department of Labor. The Department of Labor makes no guarantees, warranties, or assurances of any kind, express or implied, with respect to such information, including any information on linked sites and including, but not limited to, accuracy of the information or its completeness, timeliness, usefulness, adequacy, continued availability, or ownership.