

The background of the slide is a light gray gradient with several realistic water droplets of various sizes scattered across it. The droplets have highlights and shadows, giving them a three-dimensional appearance.

MARINE POLICY PRACTICUM: THE INTERNATIONAL PACIFIC HALIBUT COMMISSION FT 193

JOEL MARKIS

OUTLINE

- Rcap – Joel
- The IPHC Process
- What we saw
- Catch Limits / Proposal Determinations
- Presentations
- THANK YOU

WHAT IS THE IPHC

- An international Fisheries Organization
 - USA & Canada only members
- Responsible for Pacific Halibut Management & Research
- Established in 1923 by International Treaty
 - The preservation of Pacific Halibut in waters off Canada and the USA
 - Originally called the International Fisheries Commission

INTERNATIONAL PACIFIC HALIBUT COMMISSION

“The Commission was charged with studying the life history of halibut and with recommending regulations for the preservation of the resource and development of the fishery”

IPHC MAKEUP

- 3 Commissioners from each country (6 total)
 - Governor General of Canada & President of the United States of America
 - Chairmanship of the Commission alternates annually between countries

CURRENT COMMISSIONERS

- Robert Alverson United States
- Ted Assu Canada
- James Balsiger United States (Chair)
- David Boyes Canada (bow tie)
- Jeff Kauffman United States (New)
- Paul Ryall Canada



BRUCE M. LEAMAN
DIRECTOR

ROBERT ALVERSON
COMMISSIONER

JAMES BALSIGER
CHAIR

JEFF KAUFFMAN
COMMISSIONER



D ASSU
MISSIONNER
(CANADA)

PAUL RYALL
VICE CHAIR
(CANADA)

DIRECTOR

- Bruce M. Leaman 1997-2016
 - Oversees IPHC Staff and Scientists
 - Commissioners appoint Director who supervises scientific staff
 - New Commissioner announced - Dr. David Wilson
 - Head of International Fisheries Section of the Australian Bureau of Agricultural and Resources Economics and Sciences,



ADVISORY BODIES

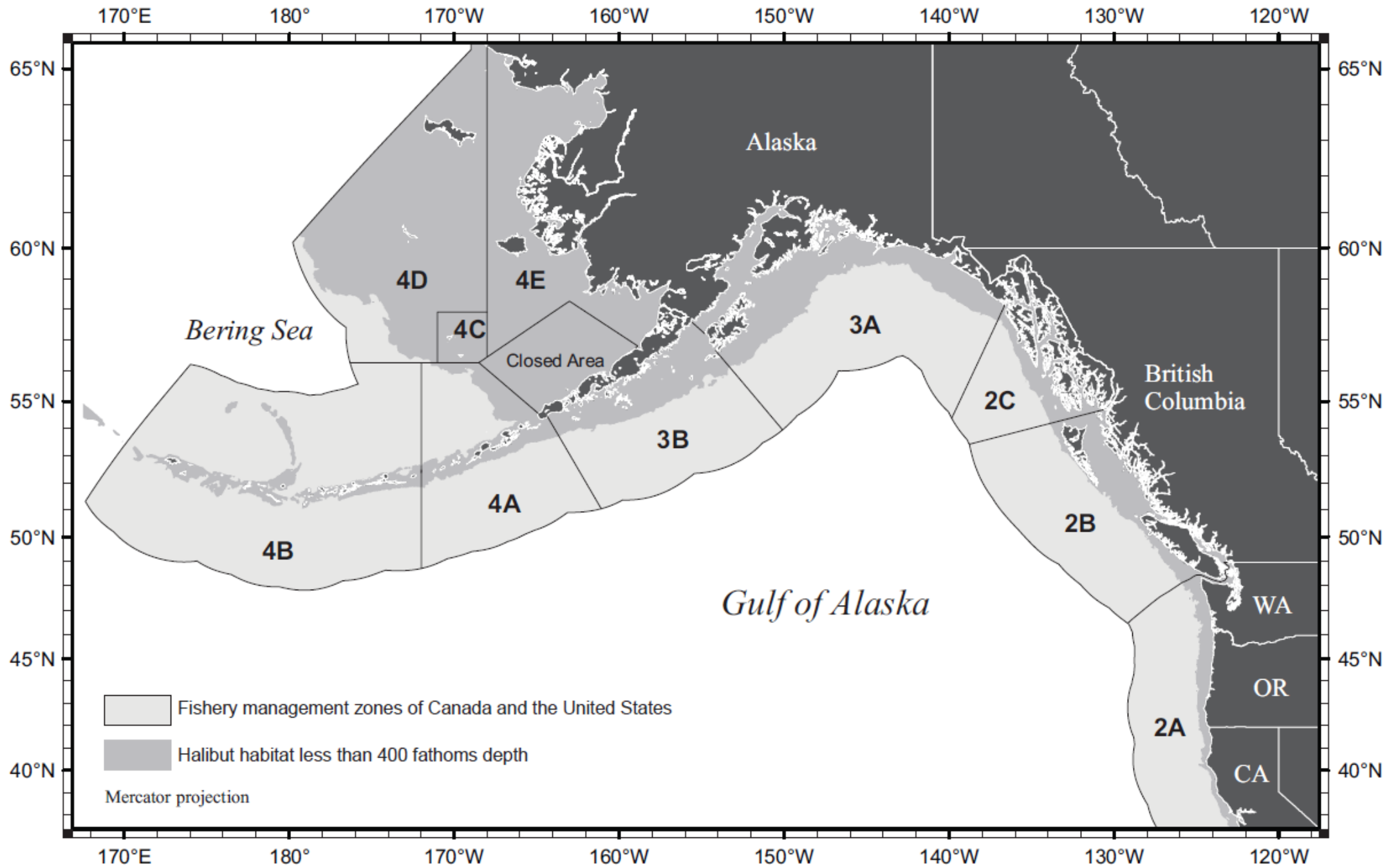
- Conference Board -1931
 - Panel representing Canadian and American commercial and sport halibut fishers
- Processor Advisory Group (PAG) -1996
 - Panel representing halibut processors
 - Research Advisory Board (RAB) -2013
 - fishers and processors who suggest where research should focus
 - Management Strategy Advisory Board (MSAB) -2013
 - harvesters, fisheries managers, processors, Staff, Commissioners, science advisors, and academics
 - Scientific Review Board (SRB) -2013
 - small group of fisheries science experts

Management

DONE BY IPHC

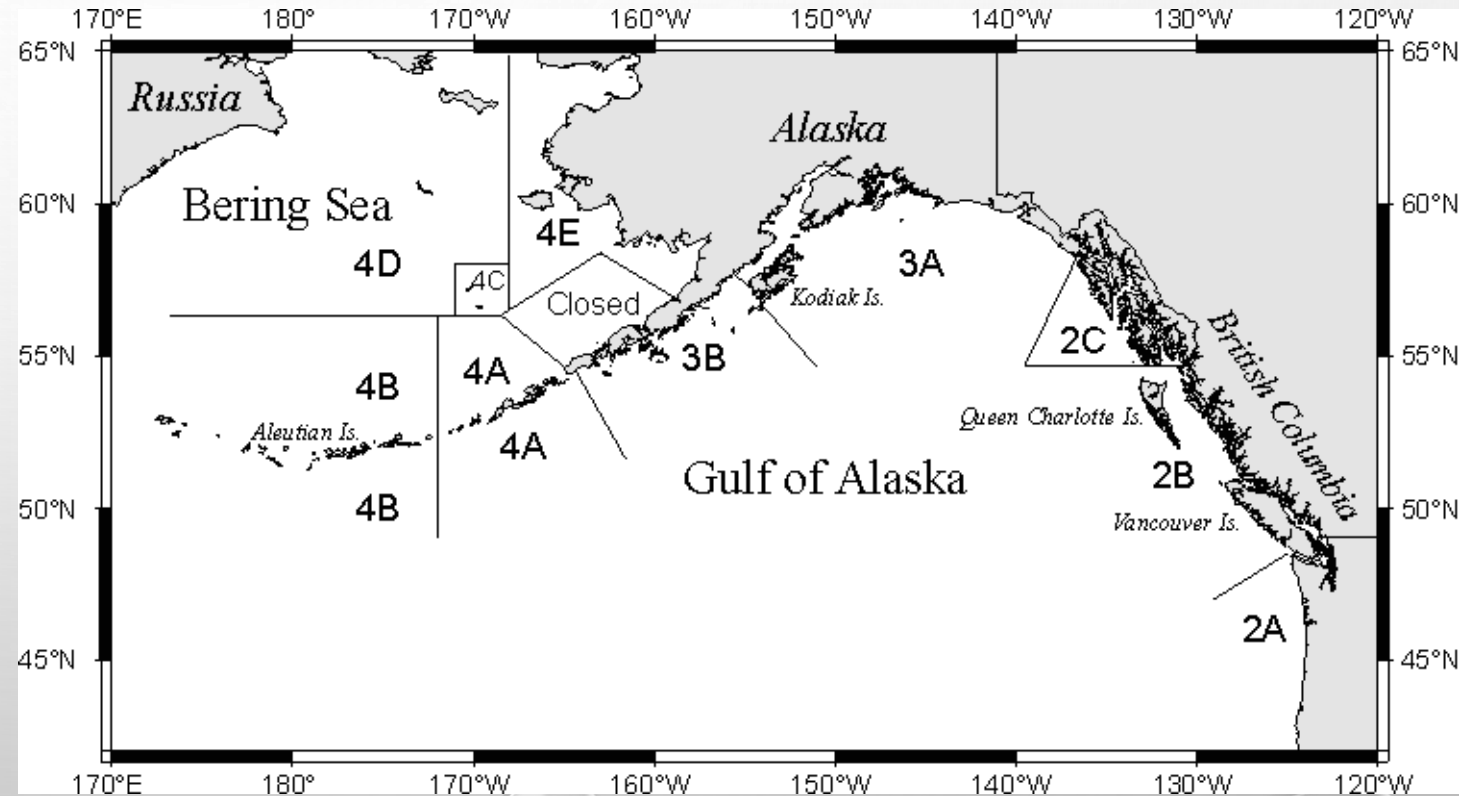
- RECOMMEND CATCH LIMITS
- LIMITS ENACTED BY NPFMC
 - OR FAO CANADA
- ENFORCEMENT BY NMFS





Management

- Size, gear, season, area and catch restrictions
- IFQ, IVQ and derbies



IPHC

- Estimate the abundance of Halibut in N. Pacific
 - Fishery independent Setline Survey
 - NMFS Trawl survey data
 - Estimate all removals of halibut from U.S. and Canadian Waters
 - commercial, recreational, subsistence, bycatch, incidental, and wastage
 - 42.1 M 2015
- Make Catch Recommendations
- Review Proposals, Research, & Budgets

IPHC GENERAL OUTLINE

State of the fishery (report on fishery)

Current year stock assessment

Harvest decision table

Agency Reports by Region

Regulatory proposals (6 in 2016) – more really

Receive recommendations and Reports (Boards & Groups)

DISCUSSION & PUBLIC COMMENT

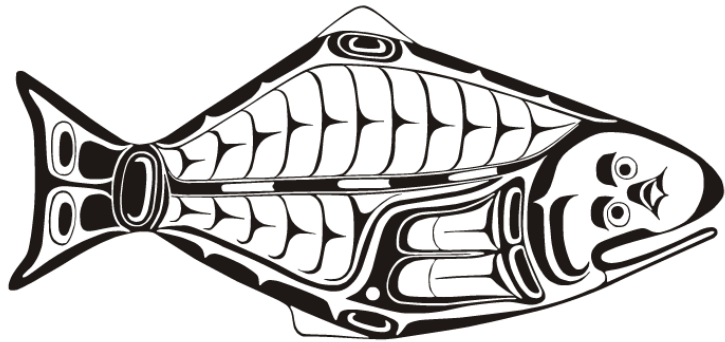
Approve regulations and catch limits for Year

Approve other actions as needed

IPHC PROCESS

- Open to the public and most user groups are involved & represented
- Voting is done by the commissioners (similar to BOF)
- Implementation & Allocation is done by countries themselves

INTERNATIONAL PACIFIC



HALIBUT COMMISSION

WHAT WE SAW

- Introductions
 - State of the fishery 2015
 - What does it look like?
 - Report - Survey expansion
 - What does that mean for fish # / Biomass
 - The 2015 stock assessment and 2016 harvest decision table

STOCK ASSESSMENT

- ????

CONFERENCE BOARD

- Roll Call – Took a while 150 or so represented organizations
- App for management “Shine ?” presentation
- Recommended harvests and Timing

PROCESSORS GROUP

- Much fewer participants
- Recommended harvests and Timing



BYCATCH

- Amendment 80 Group
 - Fines for going over
 - Abundance vs numbers
- Fisheries Footprint

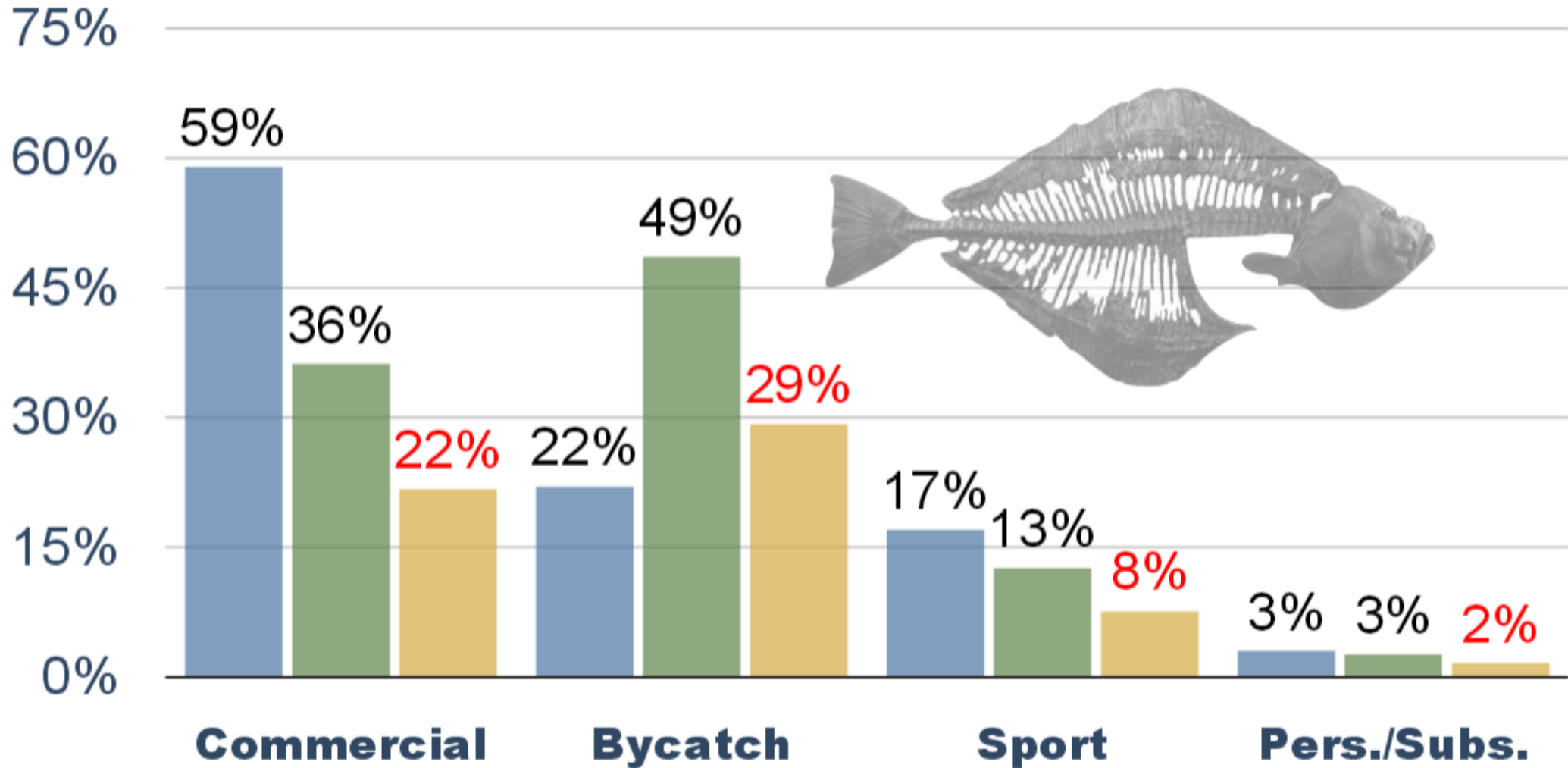
Sector	# of Halibut per mt
Commercial	125
Bycatch	465
Sport	158
Personal	205

2014 Fisheries

POUNDS

NUMBERS

EFFECT ON STOCK



DECISION TABLE

Area	Blue line	Allocation	Change
2A	1.02	1.14	111.76%
2B	5.22	7.3	139.85%
2C	4.62	4.95	107.14%
3A	9.27	9.6	103.56%
3B	2.71	2.71	100.00%
4A	1.3	1.39	106.92%
4B	0.92	1.14	123.91%
4CDE	1.64	1.66	101.22%
Tota	26.7	29.89	111.95%

PROPOSALS

- The Commissioners set an opening date of March 19th and a closing date of Nov 7th
- They increased the size limit of the sport caught halibut in area 2c (sitka) from 42 – 43 inches
- They approved the use of Pots to retain halibut if captured in the sablefish/blackcod fishery
- They approved making a tagged fish not count toward your bag limit

PROPOSALS

- They approved the use of electronic log books when recording fishing information
- The commissioners split the vote on reducing the size limit for commercial caught fish from 32 – 30 in. this motion failed. Canada was opposed and the US was in favor. This proposal FAILED
- They approved the use of Tribal ID's
- The commissioners took no action on the proposal to Revise US commercial fishing logbook requirements for operators to complete a logbook for fishing trips, from the current definition of when fishing for halibut, to if a landing occurs.

PROPOSALS

- The commissioners made no comment and took no action on the proposal to establish a maximum size retention limit of 60 inches for Pacific Halibut in all regulatory areas for both the sport and commercial fisheries.
- The commissioners made no comment and took no action on the proposal to document and release halibut >72". Use of barbless hooks.

WHAT WE SAW

- Introductions
 - State of the fishery 2015
 - Blue Line Decision Table
 - Report - Survey expansion
 - The 2015 stock assessment and 2016 harvest decision table
 - Regulatory proposals for 2016
- Public comments
- Discussion

IN CONCLUSION

	0.082	0.117	0.7815	0.781
Total	29,223	28,700	31,750	32,840
27,000				

1 Combined sport and commercial allocation (2A includes tribe)
2 Includes commercial and recreational charter Catch Sharing Plan
3 Allocation for combined Areas 4C, 4D, 4E
4 WPFMC Plan: 4C, 4C: 46.43% of 80K less than 4CDE quota, 4E: 7.41% + 8K
80K implemented if at or above 1.8576









EVALUATIONS

- Spring-2016 FT193P-TD1: Fisheries Policy Practicum
- START HERE!!
- Announcements
- UAS Syllabus
- Scholarship Application
- Meeting Info
- Discussions
- WebMeeting
- Classlist
- ePortfolio
- UAS Resources
- Egan Library
- Help
- Student Course Rating**

COURSE MANAGEMENT



INTERNATIONAL PACIFIC HALIBUT COMMISSION

Fisheries Policy Practicum FT 193

Understanding the IPHC



Institution Course View All

Announcements

IPHC final determinations MONDAY

Posted on: Sunday, 11/22/15 10:53:55 AM AKST

I wanted to send out an email with the results of the IPHC final decisions / voting and a brief summary of what happened. In brief I think we chose the right portions of the meeting to attend. The final decisions were more of a formality, but the commissioners did provide some information about their reasons for making the various determinations. In general the commissioners typically approved harvests above the blue line that IPHC staff presented, but typically Lower than the Conference Board CB(harvesters groups) and Processers Advisory Group PAG(processors) recommended.

Posted by: Joel Markis
Posted to: Spring-2016
FT193P-TD1: Fisheries Policy Practicum



THANK YOU

- This is what makes teaching worthwhile
- Please fill out evaluations

