

The background of the slide is a light gray gradient with several realistic water droplets of various sizes scattered across it. The droplets have highlights and shadows, giving them a three-dimensional appearance.

MARINE POLICY PRACTICUM: THE INTERNATIONAL PACIFIC HALIBUT COMMISSION FT 193

JOEL MARKIS

INTRODUCTION

- 1 at a time mic check / Intros
- Course Structure / Syllabus
- Intro to IPHC
- Halibut
- The IPHC Process
- Homework!

INTRODUCTIONS

- Joel Markis

LOGISTICS

- IPHC Annual Meeting Jan 25 – 27 +28 +29 Juneau, AK
 - Centennial Hall Convention Center (101 Egan Drive)
- Jan 25th meet @ 10:30am TBD
- Jan 26th meet @ 8:30am Centennial Hall
- Jan 27th meet @ 8:30am Centennial Hall

WHAT IS THE IPHC

- An international Fisheries Organization
 - USA & Canada only members
- Responsible for Pacific Halibut Management & Research
 - *Hippoglossus stenolepis*
- Established in 1923 by International Treaty
 - The preservation of Pacific Halibut in waters off Canada and the USA
 - Originally called the International Fisheries Commission

INTERNATIONAL PACIFIC HALIBUT COMMISSION

“The Commission was charged with studying the life history of halibut and with recommending regulations for the preservation of the resource and development of the fishery”

IPHC HISTORY

- 1880's Atlantic Halibut fleet moves to N. Pacific
- By 1914 extended to Aleutians and stocks appeared depleted
- Industry petitioned governments to step in
- Convention for the Preservation of the Halibut Fishery of the Northern Pacific Ocean on March 2, 1923
 - 3 month closed season and Bycatch

IPHC MAKEUP

- 3 Commissioners from each country (6 total)
 - Governor General of Canada & President of the United States of America each appoint three
 - Federal Fisheries Employee
 - Fisher
 - Byer/Processor
 - Chairmanship of the Commission alternates annually between countries
 - Commissioners appoint **Director** who supervises scientific staff

CURRENT COMMISSIONERS

- Robert Alverson United States
- Ted Assu Canada
- James Balsiger United States
- David Boyes Canada
- Donald Lane United States
- Paul Ryall Canada

DIRECTOR

- Bruce M. Leaman 1997-current
 - Oversees IPhC Staff and Scientists
 - Leaving early 2016



ADVISORY BODIES

- Conference Board -1931
 - Panel representing Canadian and American commercial and sport halibut fishers
- Processor Advisory Group (PAG) -1996
 - Panel representing halibut processors
- Research Advisory Board (RAB) -2013
 - fishers and processors who suggest where research should focus
- Management Strategy Advisory Board (MSAB) -2013
 - harvesters, fisheries managers, processors, Staff, Commissioners, science advisors, and academics
- Scientific Review Board (SRB) -2013
 - small group of fisheries science experts

PACIFIC HALIBUT
HIPPOGLOSSUS STENOLEPIS



PACIFIC HALIBUT

HIPPOGLOSSUS STENOLEPIS

Size

- Length to over 8 feet, weight to over 500 lb
- Both eyes on the right (upper side), with rare exceptions

Lifespan

- 55 years (males and females)

Distribution/Range

- California to the Bering Sea, west to the Sea of Japan

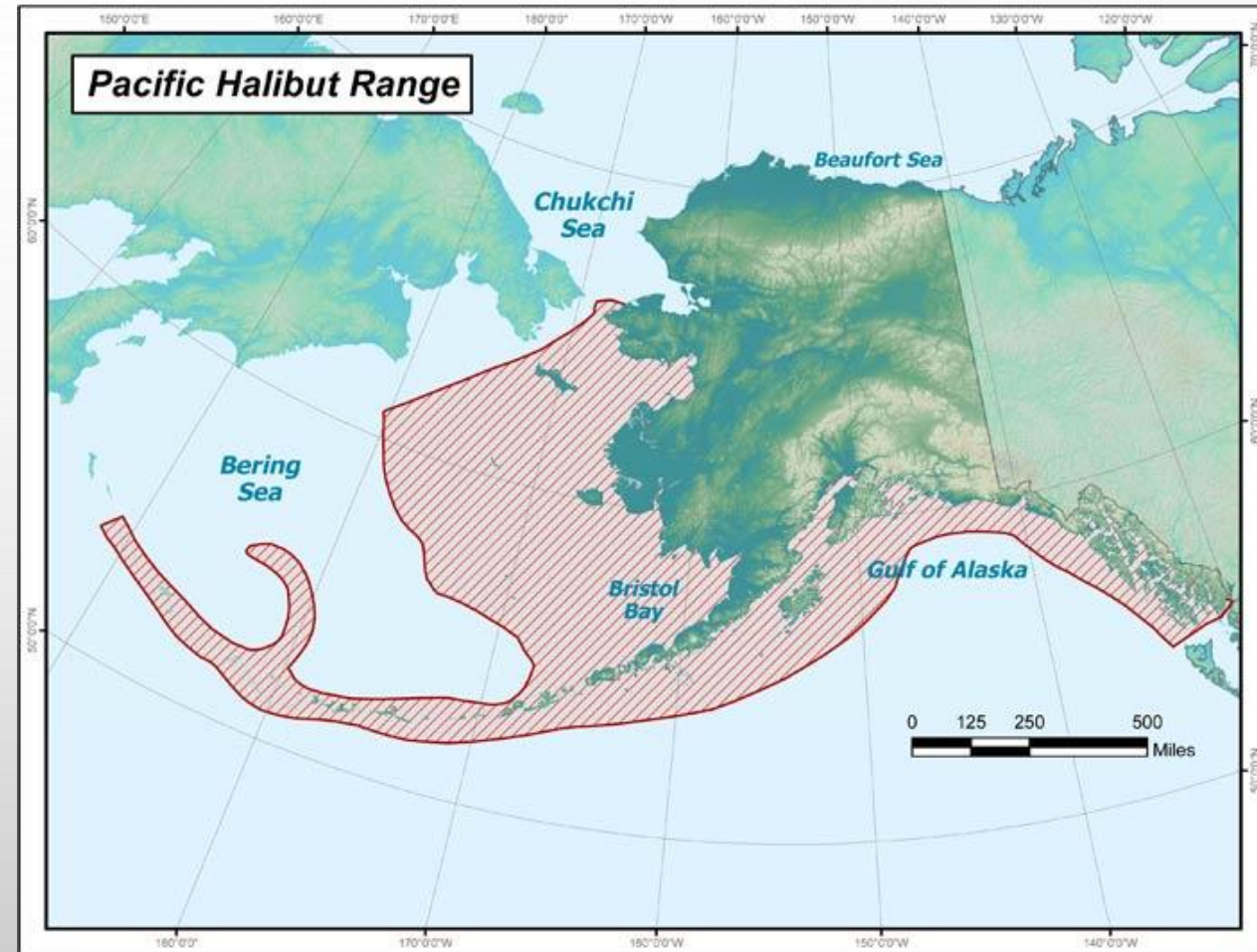
BIOLOGY

- Asymmetrical
 - Shift in: neurocranium, eye socket, eye, nostril, inner ear
- Laterally compressed
- Most right-handed
- Camouflage
- Bury themselves
- No swimbladder



ECOLOGY

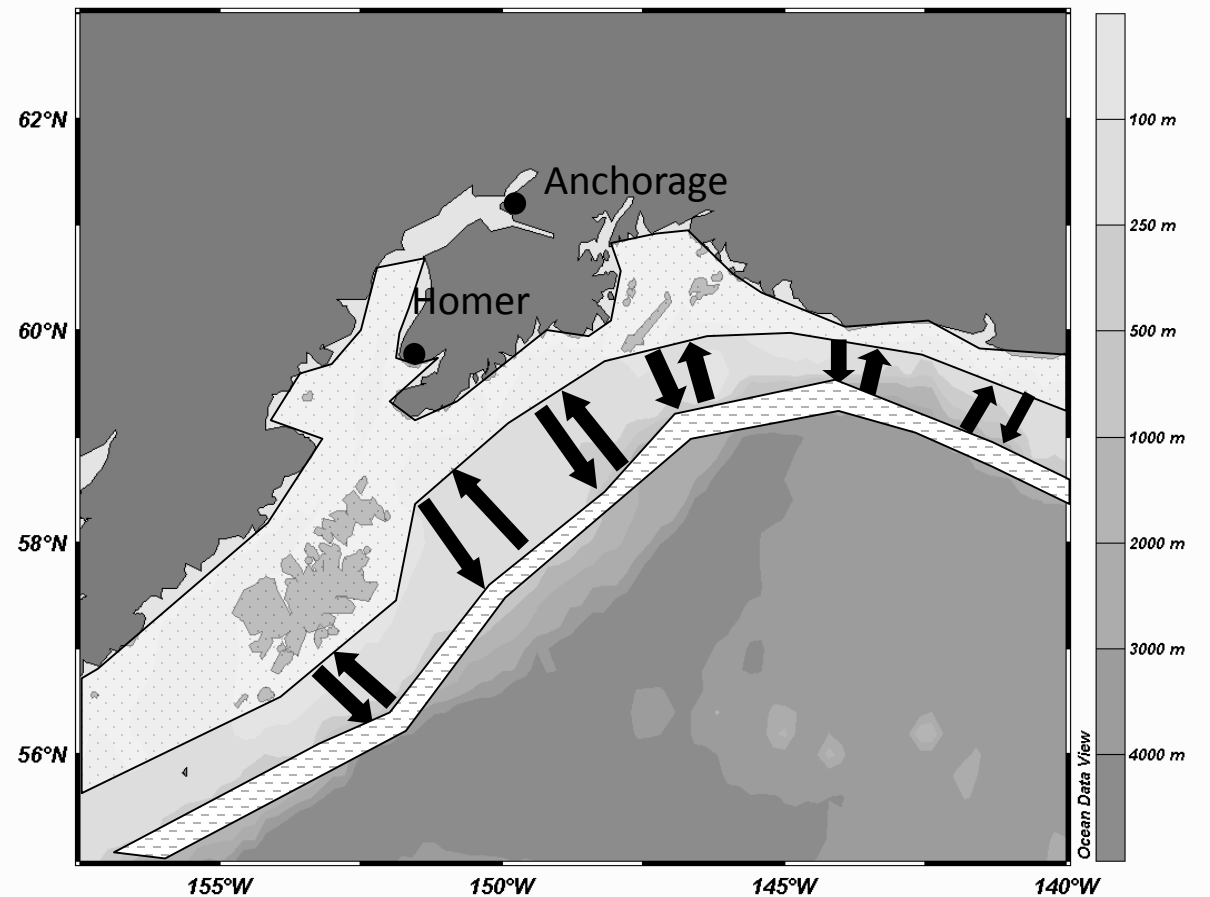
- Inhabit shelf/slope, with other fishes
- Inhabit benthos
 - may swim in water column
- Young eaten by a variety of animals
- Adults, Big top level predators
 - Start eating inverts
 - As adults, shift to fish



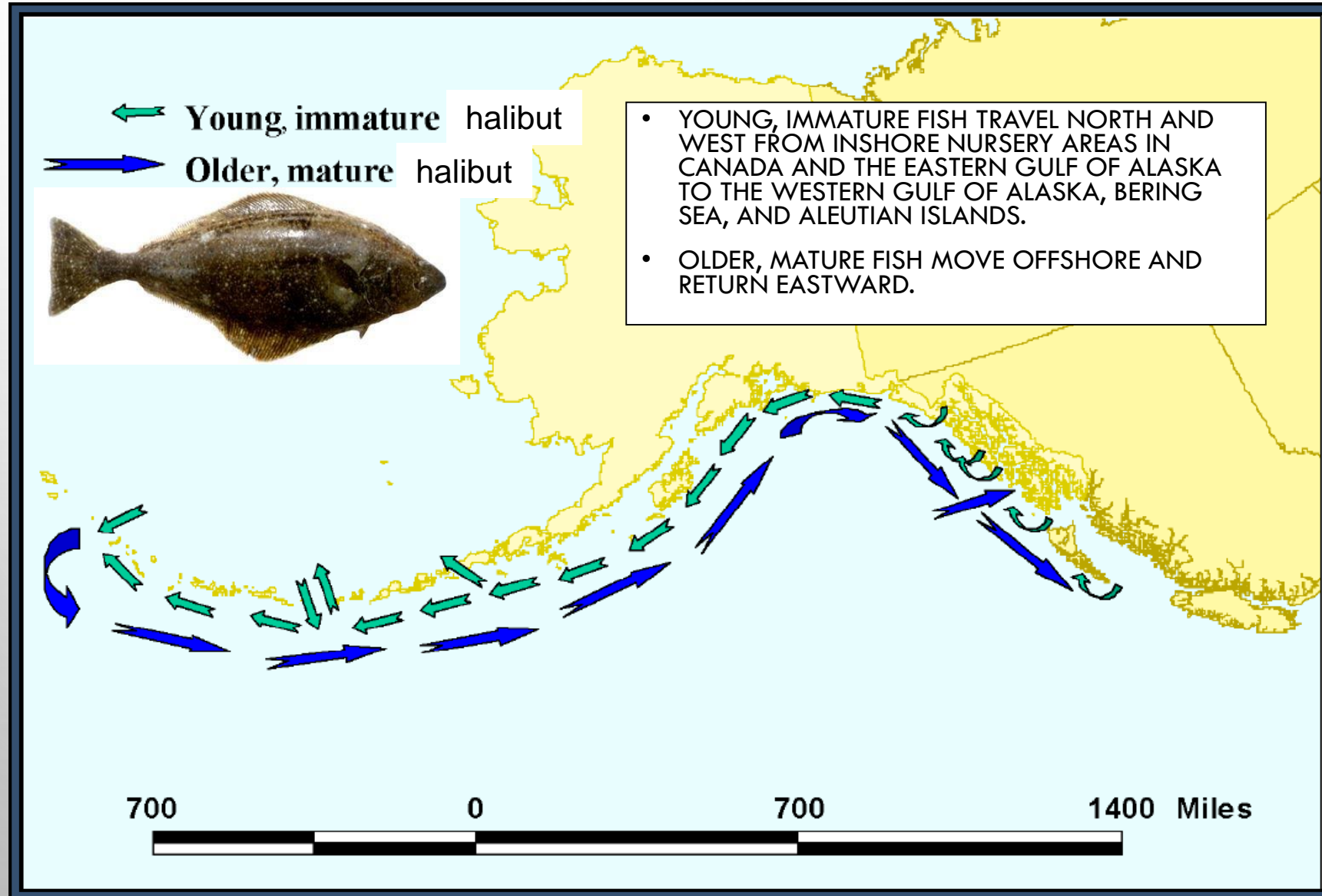
MIGRATIONS

Adult seasonal movement

- Summer feeding grounds nearshore
- In late fall, migrate offshore to spawn
- In spring, migrate back to summer grounds



BASIC MIGRATION PATTERN OF HALIBUT IN THE NORTHEAST PACIFIC OCEAN



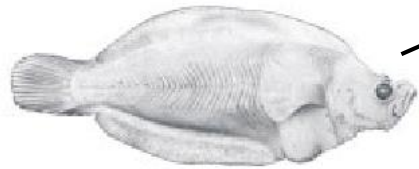
BIOLOGY



Approximately 35 mm in length.



Approximately 25 mm in length.



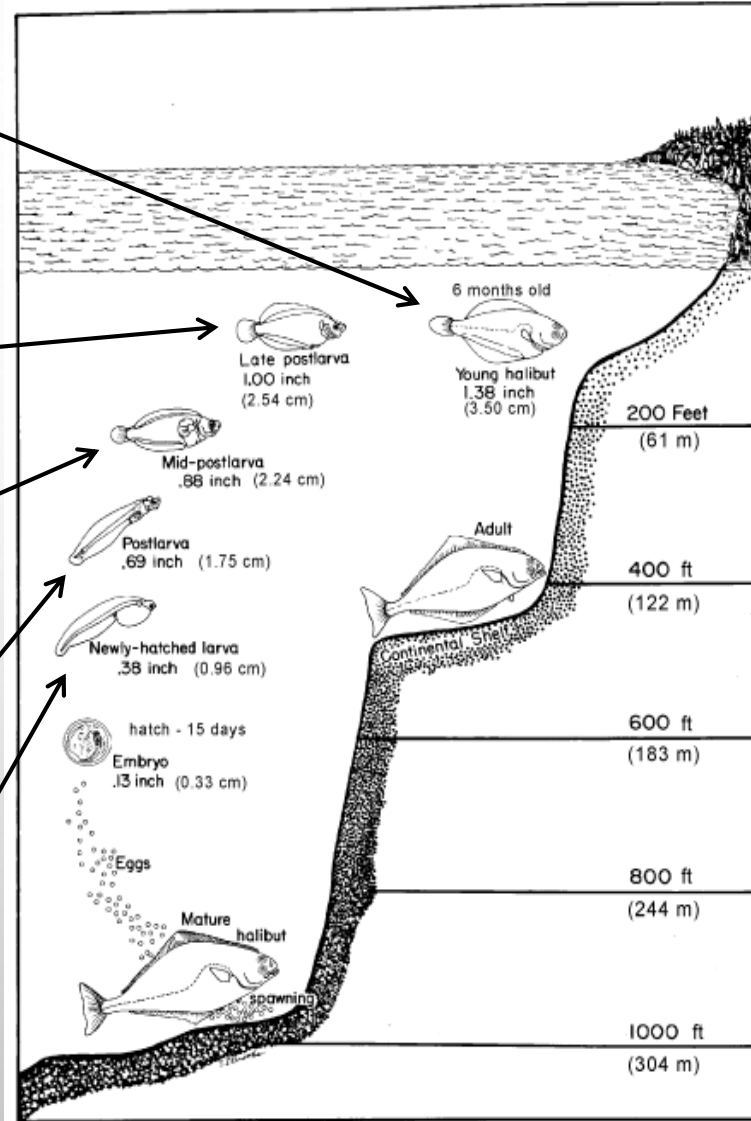
Approximately 21 mm in length.



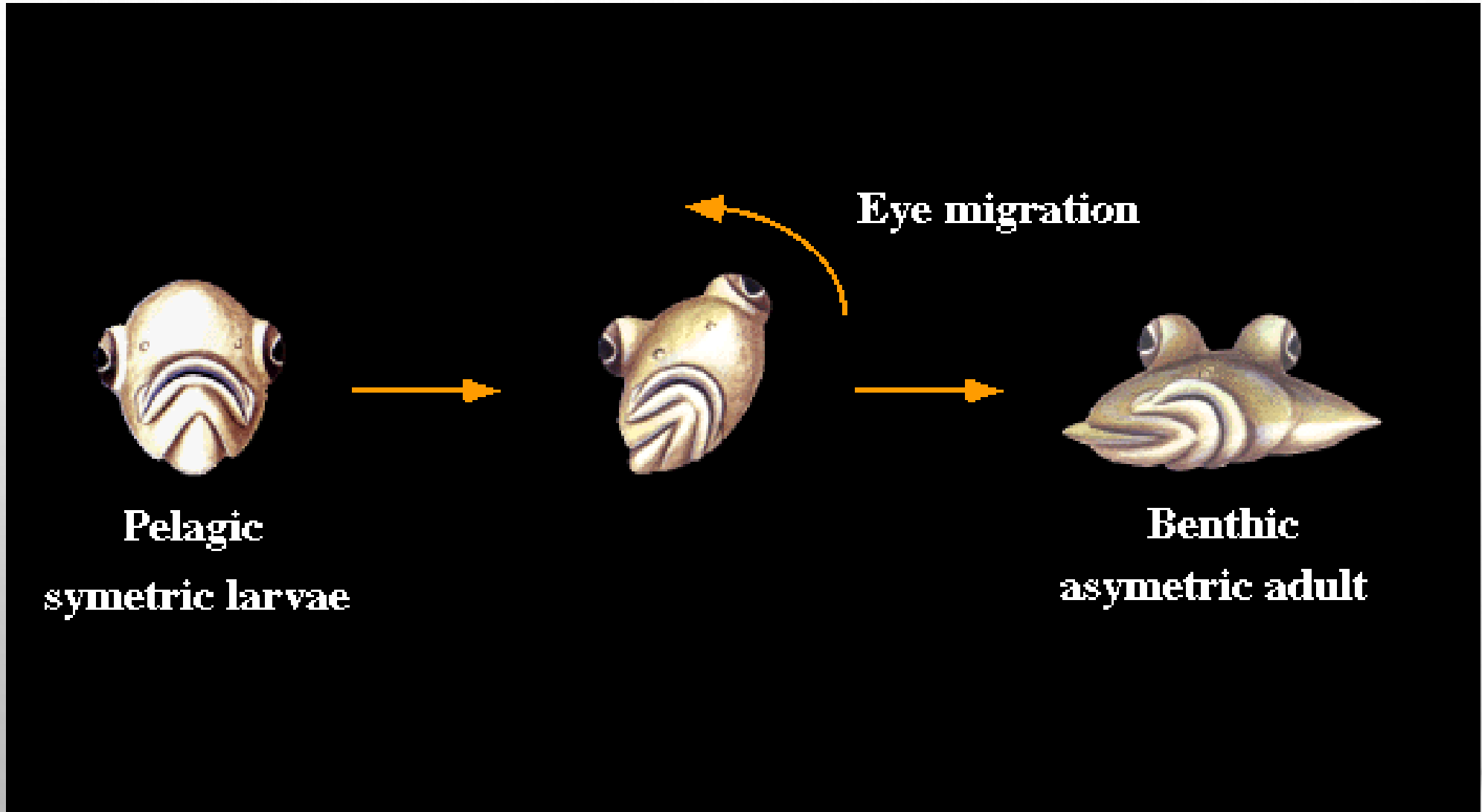
Approximately 16 mm in length.

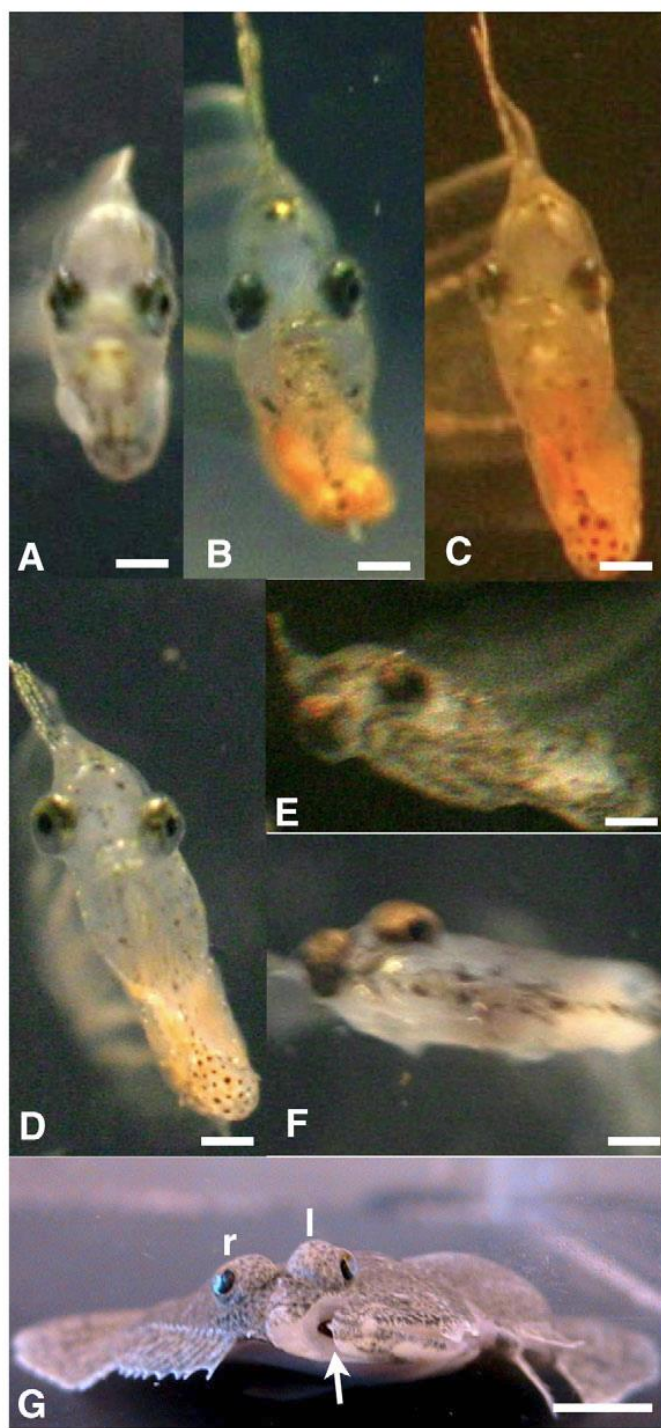


Approximately 9 mm in length.



METAMORPHOSIS





Management

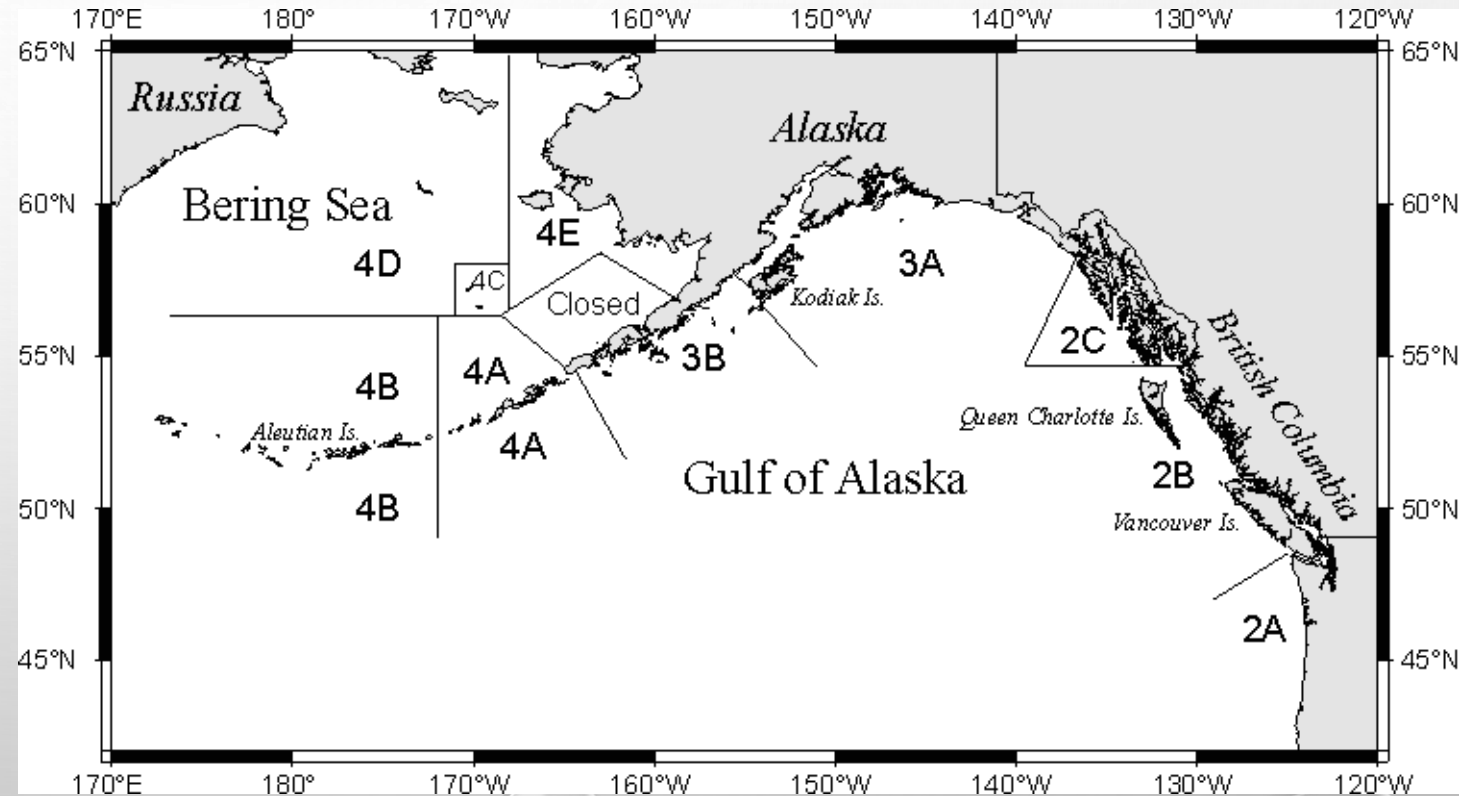
DONE BY IPHC

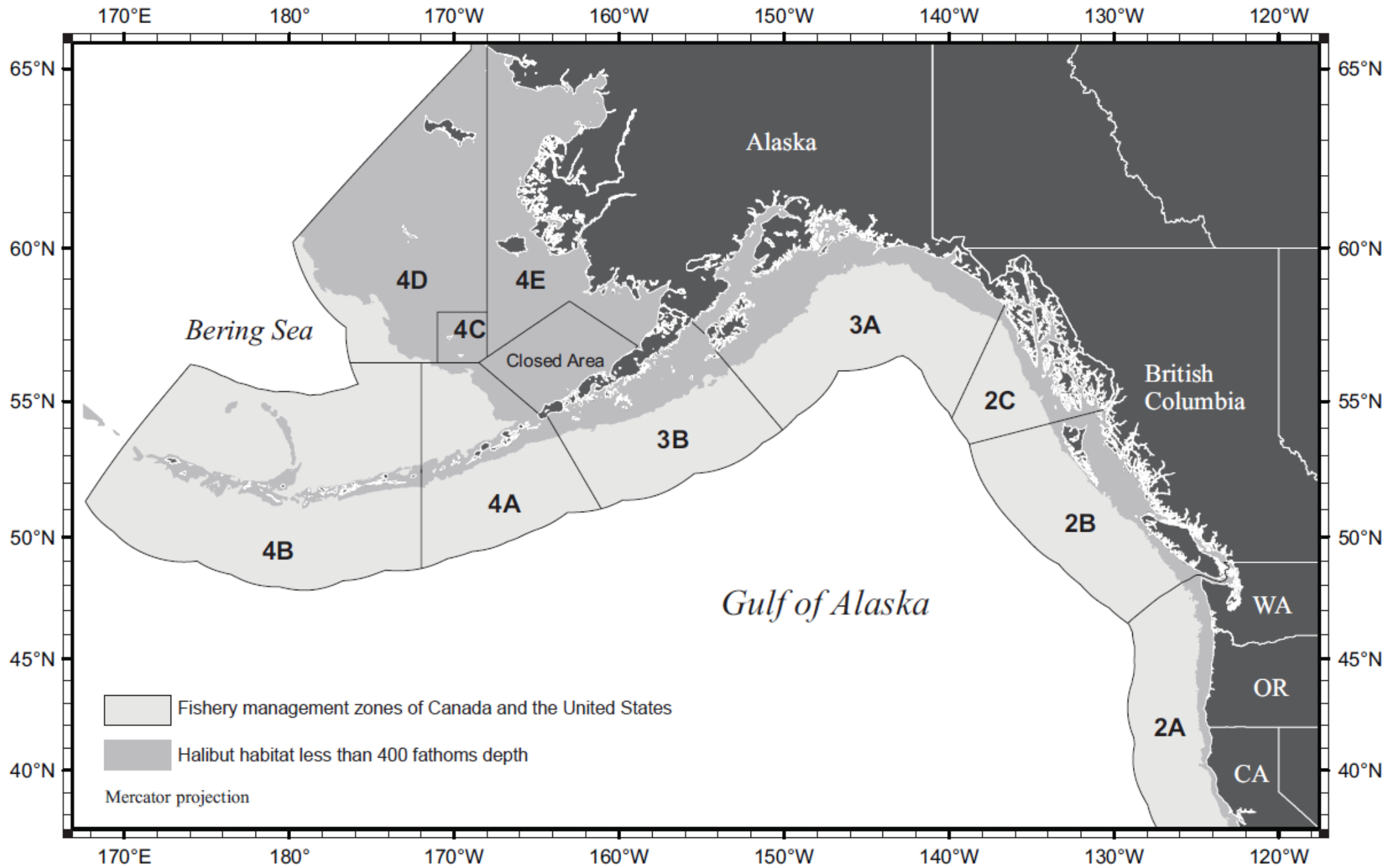
- RECOMMEND CATCH LIMITS
- LIMITS ENACTED BY NPFMC
- ENFORCEMENT BY NMFS



Management

- Size, gear, season, area and catch restrictions
- IFQ, IVQ and derbies



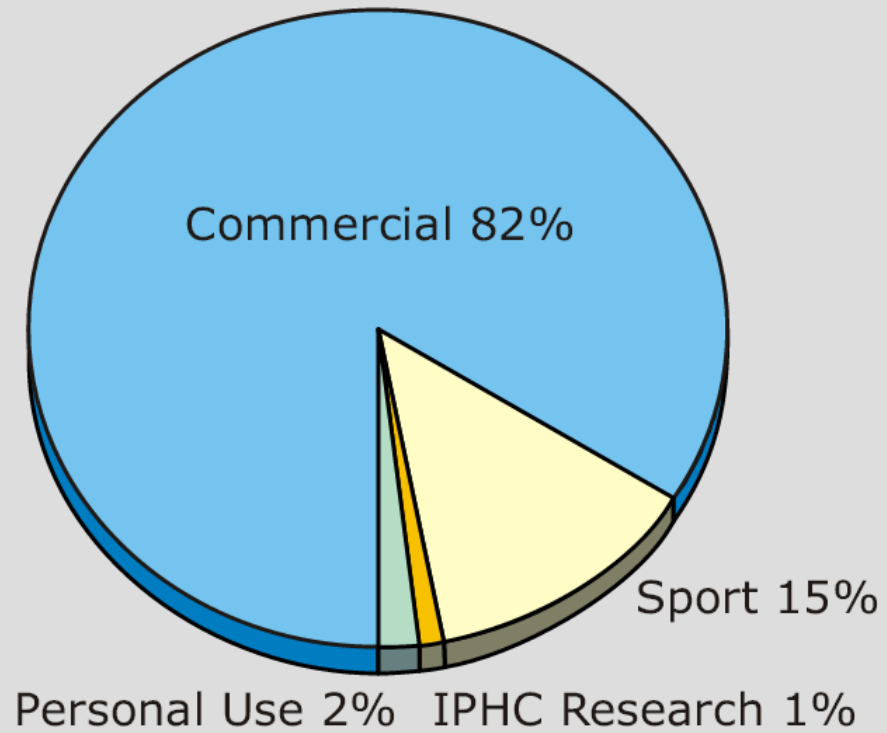


HALIBUT ALLOCATION

- IPHC makes recommendations to management organizations
- Alaska – NPFMC
 - Commercial vs. Sport
- Canada - DFO
 - 85% commercial 15% sport
- Washington, Oregon, and California – PFMC
 - Complicated

ALLOCATION

Distribution of the 2010 coast-wide halibut removals, not including wastage and other fisheries' bycatch of halibut.



2015 REMOVALS

Area	2A	2B	2C	3A	3B	4	Total
Commercial fishery	535	5,975	3,616	7,680	2,593	3,570	23,969
Commercial fishery mortality (wastage)	34	238	123	514	212	157	1,278
Sport fishery	404	994	1,952	3,535	10	17	6,912
Sport fishery discard mortality	2	35	67	70	0	1	175
Bycatch Mortality	95	337	12	1,967	731	4,664	7,806
Personal Use ¹	32	405	428	231	18	88 ²	1,202
IPHC Research	20	106	168	246	124	87	751
Total Removals	1,122	8,090	6,366	14,243	3,688	8,584	42,093
2015 Catch Limits	970	7,038 ³	4,650 ³	10,100 ³	2,650	3,815	29,223
2015 Catch	973 ⁴	7,004 ⁵	4,610 ⁶	10,243 ⁶	2,593	3,570	28,993

IPHC

- Estimate the abundance of Halibut in N. Pacific
 - Fishery independent Setline Survey
 - NMFS Trawl survey data
 - Lots of other data
 - Estimate all removals of halibut from U.S. and Canadian Waters
 - commercial, recreational, subsistence, bycatch, incidental, and wastage
 - 42.1 M 2015
- Make Catch Recommendations
- Review Proposals, Research, & Budgets

IPHC GENERAL OUTLINE

State of the fishery (report on fishery)

Current year stock assessment

Harvest decision table

Agency Reports by Region

Regulatory proposals (6 in 2016)

Receive recommendations and Reports (Boards & Groups)

DISCUSSION & PUBLIC COMMENT

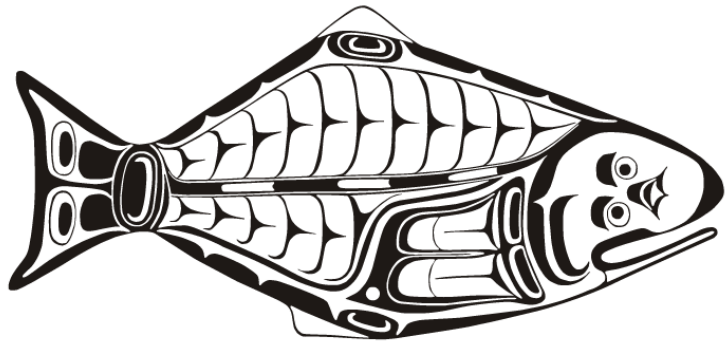
Approve regulations and catch limits for Year

Approve other actions as needed

IPHC PROCESS

- Open to the public and most user groups are involved & represented
- Voting is done by the commissioners (similar to BOF)
- Implementation & Allocation is done by countries themselves

INTERNATIONAL PACIFIC



HALIBUT COMMISSION

AGENDA DAY 1

- Introductions
 - State of the fishery 2015
 - Report - Survey expansion
 - The 2015 stock assessment and 2016 harvest decision table
 - Regulatory proposals for 2016
- Public comments
- Discussion

NOW WHAT?

- Travel Scholarships
- Homework
- Pick 2 proposals (interest to you or area)
 - Present on 1 Monday Jan 25th @10:30am
- Follow proposal through process
- Write 2 page paper summarizing proposal, process, testimony, decision, implications

QUESTIONS??

- Travel?
- Meeting location
- Expectations
- Etc...