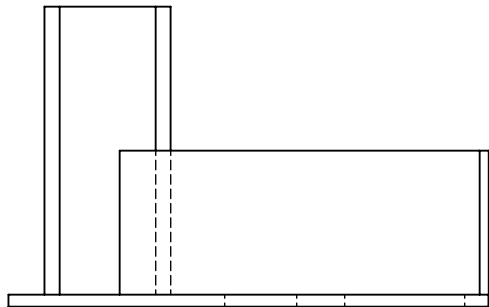
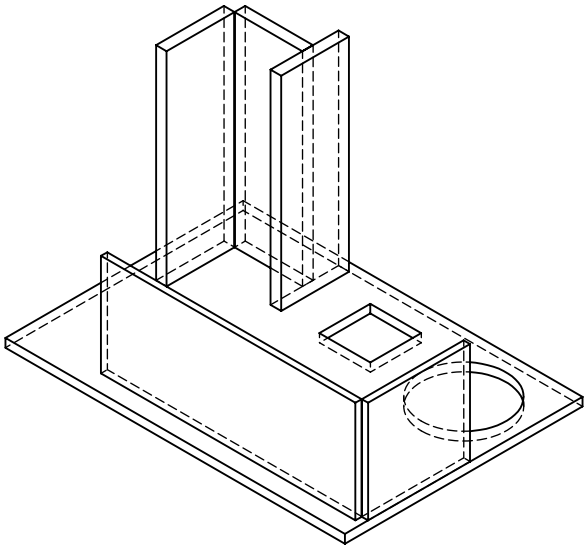
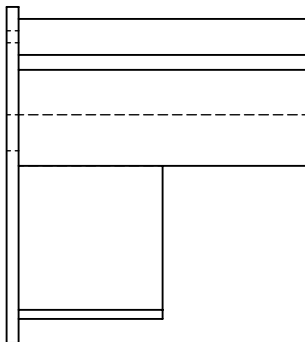
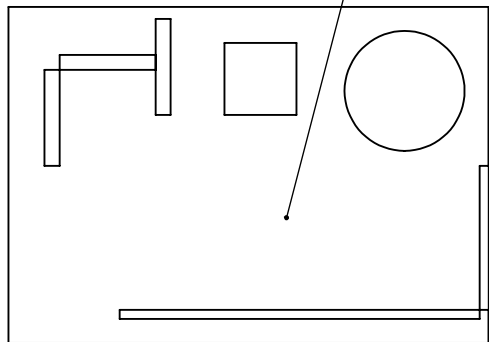


- Weld all joints as specified on prints.
- Weld all joints with baseplate in the flat position.

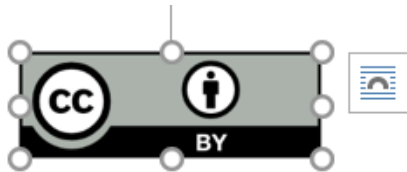


Place ID number here.



**PROPRIETARY AND CONFIDENTIAL**  
THE INFORMATION CONTAINED IN THIS  
DRAWING IS THE SOLE PROPERTY OF  
NDSCS.  
ANY REPRODUCTION IN PART OR AS A  
WHOLE WITHOUT THE WRITTEN PERMISSION  
OF NDSCS IS PROHIBITED.

UNLESS OTHERWISE SPECIFIED:		NAME	DATE	TITLE: <h1>Welding Assembly</h1>	
DIMENSIONS ARE IN INCHES TOLERANCES: +/-1/16 inch	DRAWN	CP	4/2015		
	CHECKED				
	ENG APPR.				
	MFG APPR.				
	Q.A.				
MATERIAL	COMMENTS:			SIZE <b>A</b>	
				DWG. NO. <b>1</b>	
DO NOT SCALE DRAWING				REV	
				SCALE: 1:8	
				SHEET 1 OF 1	



This work is licensed under the Creative Commons Attribution 4.0 International License. To view a copy of this license, visit <http://creativecommons.org/licenses/by/4.0/>

#### Disclaimer

This workforce product was funded by a grant awarded by the U.S. Department of Labor's Employment and Training Administration. The product was created by the grantee and does not necessarily reflect the official position of the U.S. Department of Labor. The U.S. Department of Labor makes no guarantees, warranties, or assurances of any kind, express or implied, with respect to such information, including any information on linked sites and including, but not limited to, accuracy of the information or its completeness, timeliness, usefulness, adequacy, continued availability, or ownership.