

B

A

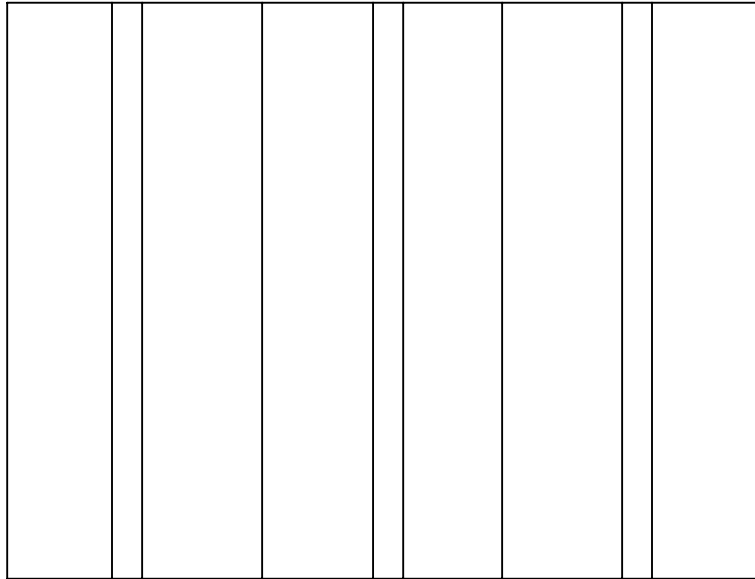
B

A

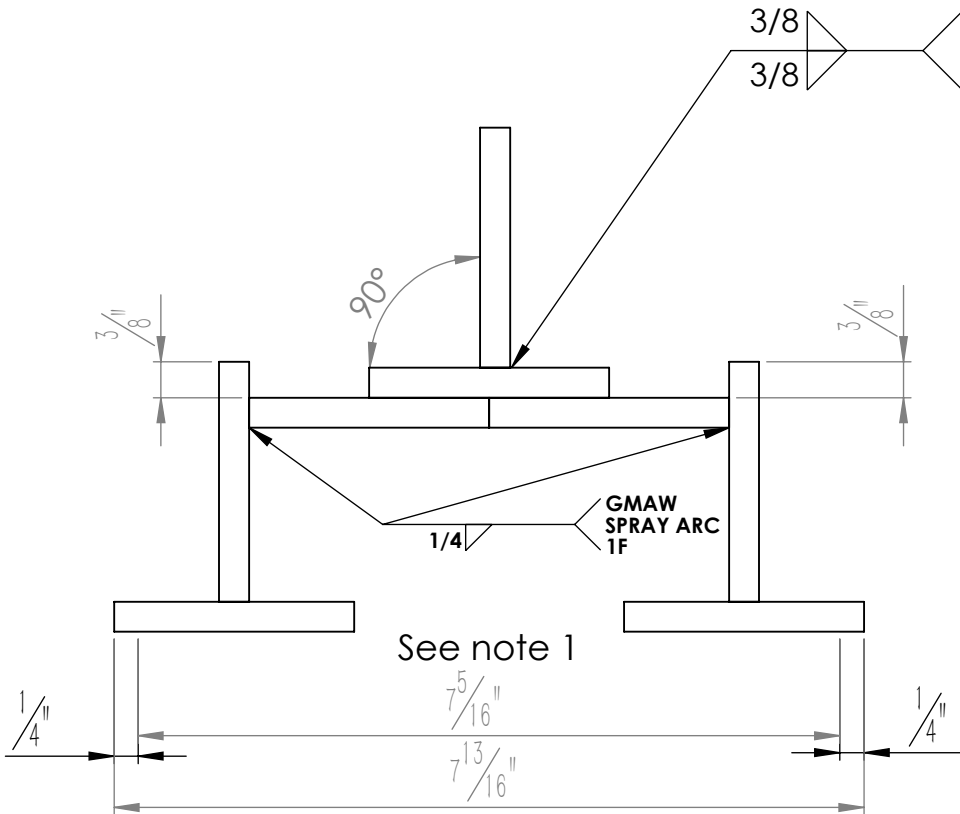
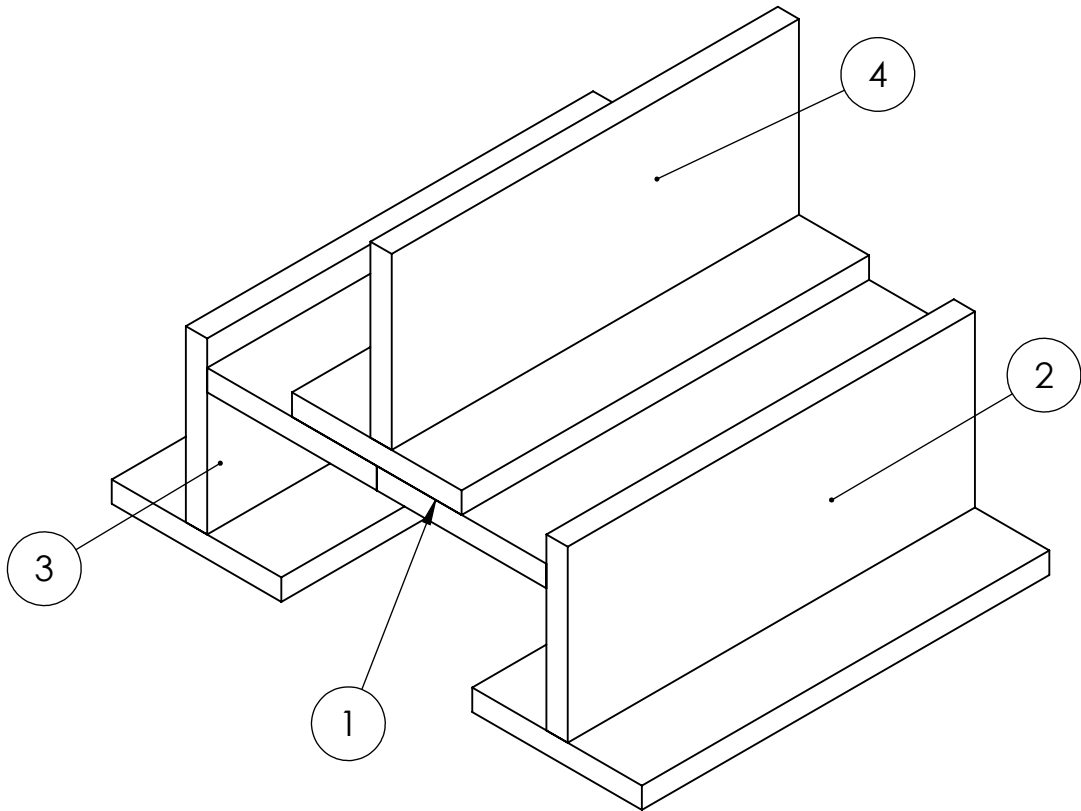
All welds to be made in the position detailed on the print

Weldment does not have to be tacked complete first.

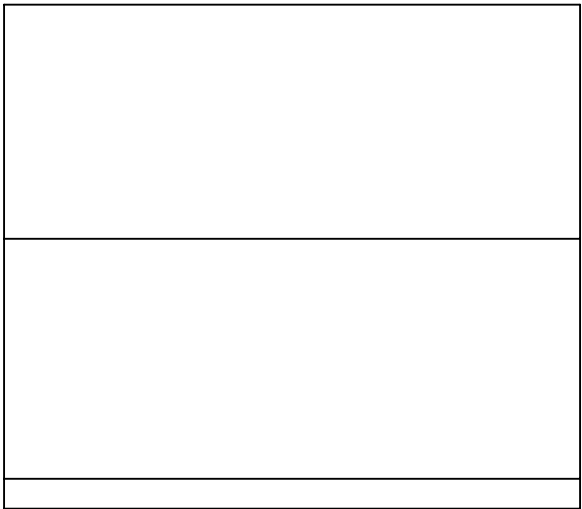
Note 1: Using the OFC processs remove 1/4 inch of the material as noted on the front view



GMAW  
METAL CORE ELECTRODE  
2F POSITION  
DO NOT TAKE THE EDGE



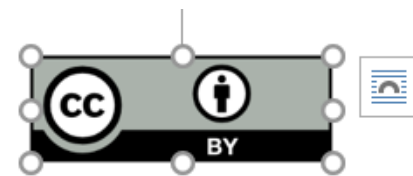
See note 1



ITEM NO.	PART NUMBER	DESCRIPTION	QTY.
1	SUB WELDMENT 1	V GROOVE	1
2	SUB WELDMENT 2	T JOINT	1
3	SUBWELDMENT 3	T JOINT	1
4	PART 1	5/16 X2.5 X 6	1

**PROPRIETARY AND CONFIDENTIAL**  
THE INFORMATION CONTAINED IN THIS DRAWING IS THE SOLE PROPERTY OF <INSERT COMPANY NAME HERE>. ANY REPRODUCTION IN PART OR AS A WHOLE WITHOUT THE WRITTEN PERMISSION OF <INSERT COMPANY NAME HERE> IS PROHIBITED.

		UNLESS OTHERWISE SPECIFIED:			NAME	DATE		
		DIMENSIONS ARE IN INCHES TOLERANCES: FRACTIONAL $\pm 1/8$ ANGULAR: MACH $\pm 3$ BEND $\pm$ THREE PLACE DECIMAL .062	DRAWN		MLV	4/20/16	TITLE: <b>FINAL TEST ASSEMBLY</b>	
			CHECKED					
			ENG APPR.					
			MFG APPR.					
		INTERPRET GEOMETRIC TOLERANCING PER:	Q.A.				COMMENTS:	
		MATERIAL	STEEL					
		FINISH					SIZE	DWG. NO.
NEXT ASSY	USED ON						<b>B</b>	100
APPLICATION		DO NOT SCALE DRAWING					SCALE: 1:2	WEIGHT:
								SHEET 1 OF 1



This work is licensed under the Creative Commons Attribution 4.0 International License. To view a copy of this license, visit <http://creativecommons.org/licenses/by/4.0/>

#### Disclaimer

This workforce product was funded by a grant awarded by the U.S. Department of Labor's Employment and Training Administration. The product was created by the grantee and does not necessarily reflect the official position of the U.S. Department of Labor. The U.S. Department of Labor makes no guarantees, warranties, or assurances of any kind, express or implied, with respect to such information, including any information on linked sites and including, but not limited to, accuracy of the information or its completeness, timeliness, usefulness, adequacy, continued availability, or ownership.