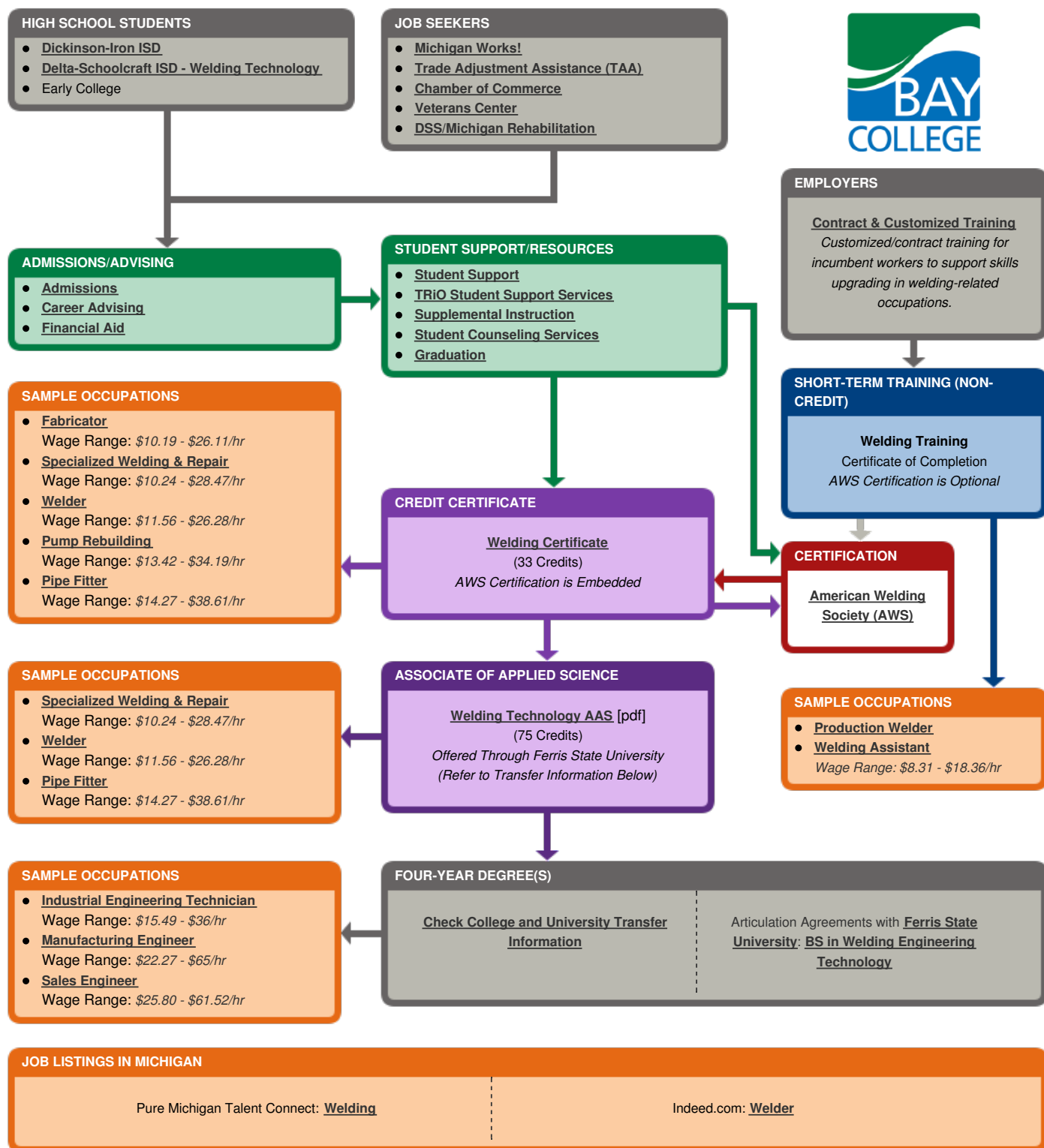


# Bay College CAREER PATHWAYS Welding

Industry Cluster: Manufacturing



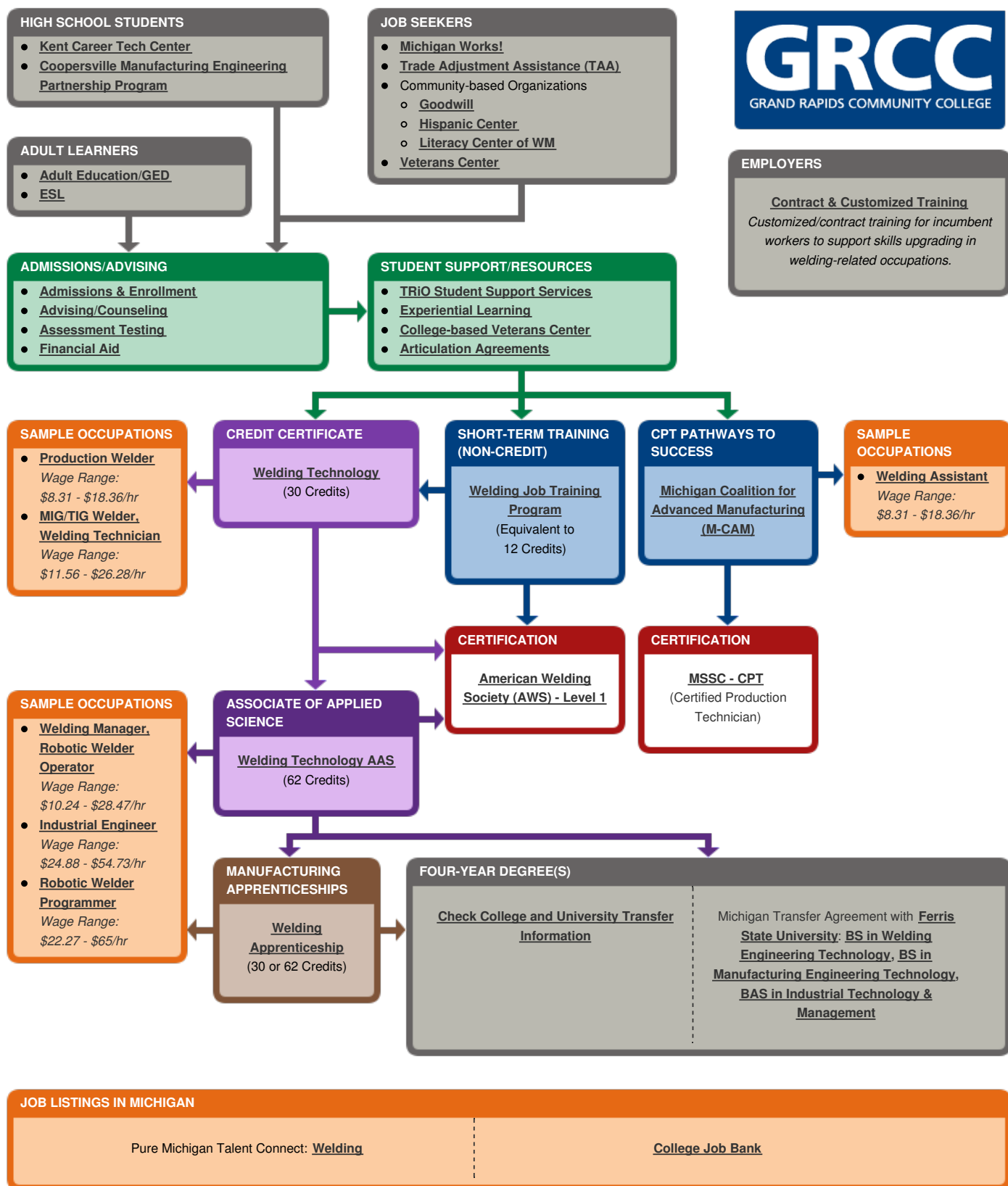
This workforce solution was funded by a grant awarded by the U.S. Department of Labor's Employment and Training Administration. The solution was created by the grantee and does not necessarily reflect the official position of the U.S. Department of Labor. The Department of Labor makes no guarantees, warranties, or assurances of any kind, express or implied, with respect to such information, including any information on linked sites and including, but not limited to, accuracy of the information or its completeness, timeliness, usefulness, adequacy, continued availability, or ownership.

The eight community colleges and M-CAM is an equal opportunity employer/program provider. Auxiliary aids and services are available upon request to individuals with disabilities. If users please call 1-877-878-8464 or visit [michigan.gov/mdcr](http://michigan.gov/mdcr). This work is licensed under a Creative Commons Attribution 4.0 International License.



# Grand Rapids Community College CAREER PATHWAYS Welding

Industry Cluster: Manufacturing



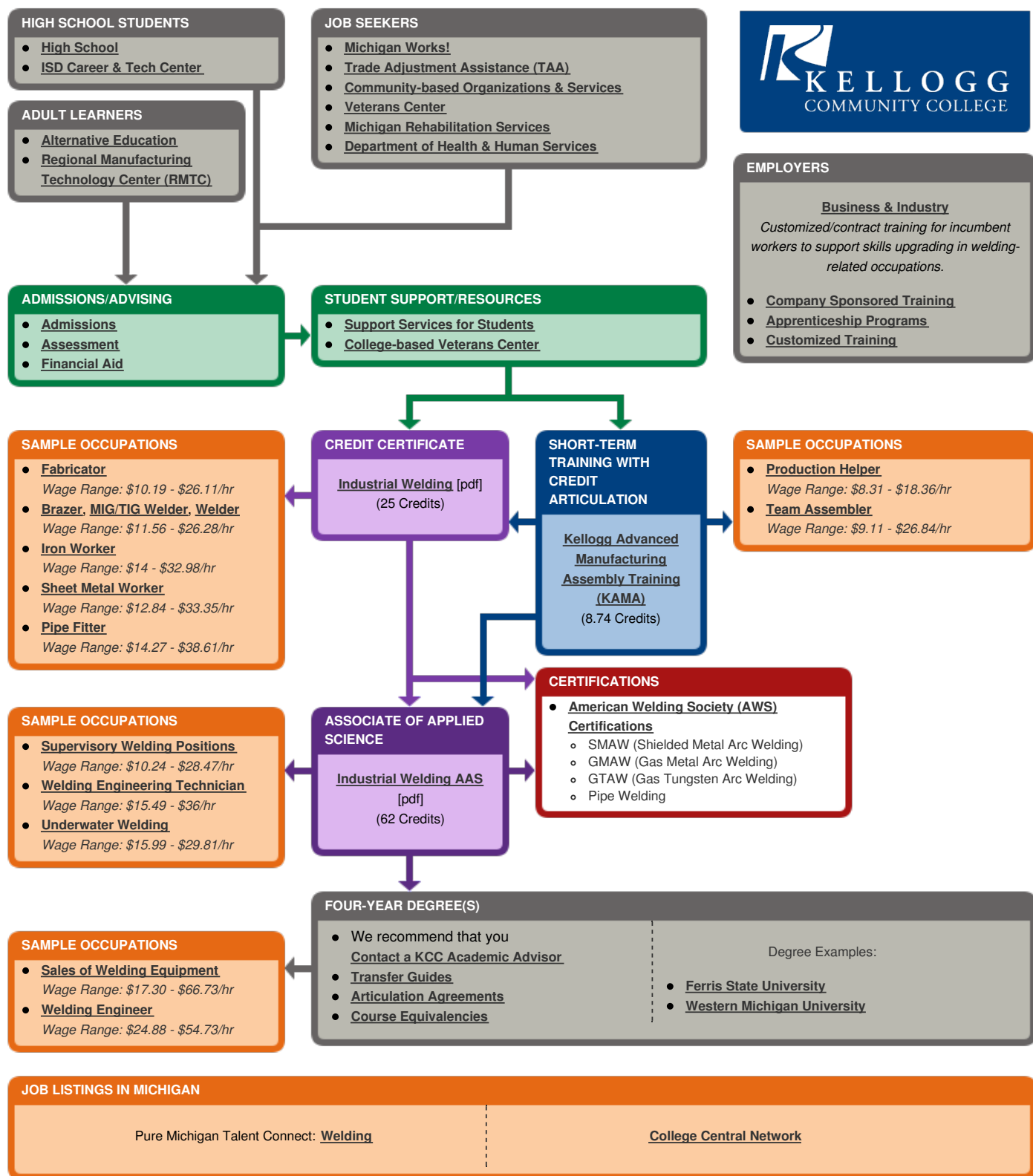
This workforce solution was funded by a grant awarded by the U.S. Department of Labor's Employment and Training Administration. The solution was created by the grantee and does not necessarily reflect the official position of the U.S. Department of Labor. The Department of Labor makes no guarantees, warranties, or assurances of any kind, express or implied, with respect to such information, including any information on linked sites and including, but not limited to, accuracy of the information or its completeness, timeliness, usefulness, adequacy, continued availability, or ownership.

The eight community colleges and M-CAM is an equal opportunity employer/program provider. Auxiliary aids and services are available upon request to individuals with disabilities. TTY users please call 1-877-878-8464 or visit [michigan.gov/mdcr](http://michigan.gov/mdcr). This work is licensed under a Creative Commons Attribution 4.0 International License.



# Kellogg Community College CAREER PATHWAYS Welding

Industry Cluster: Manufacturing



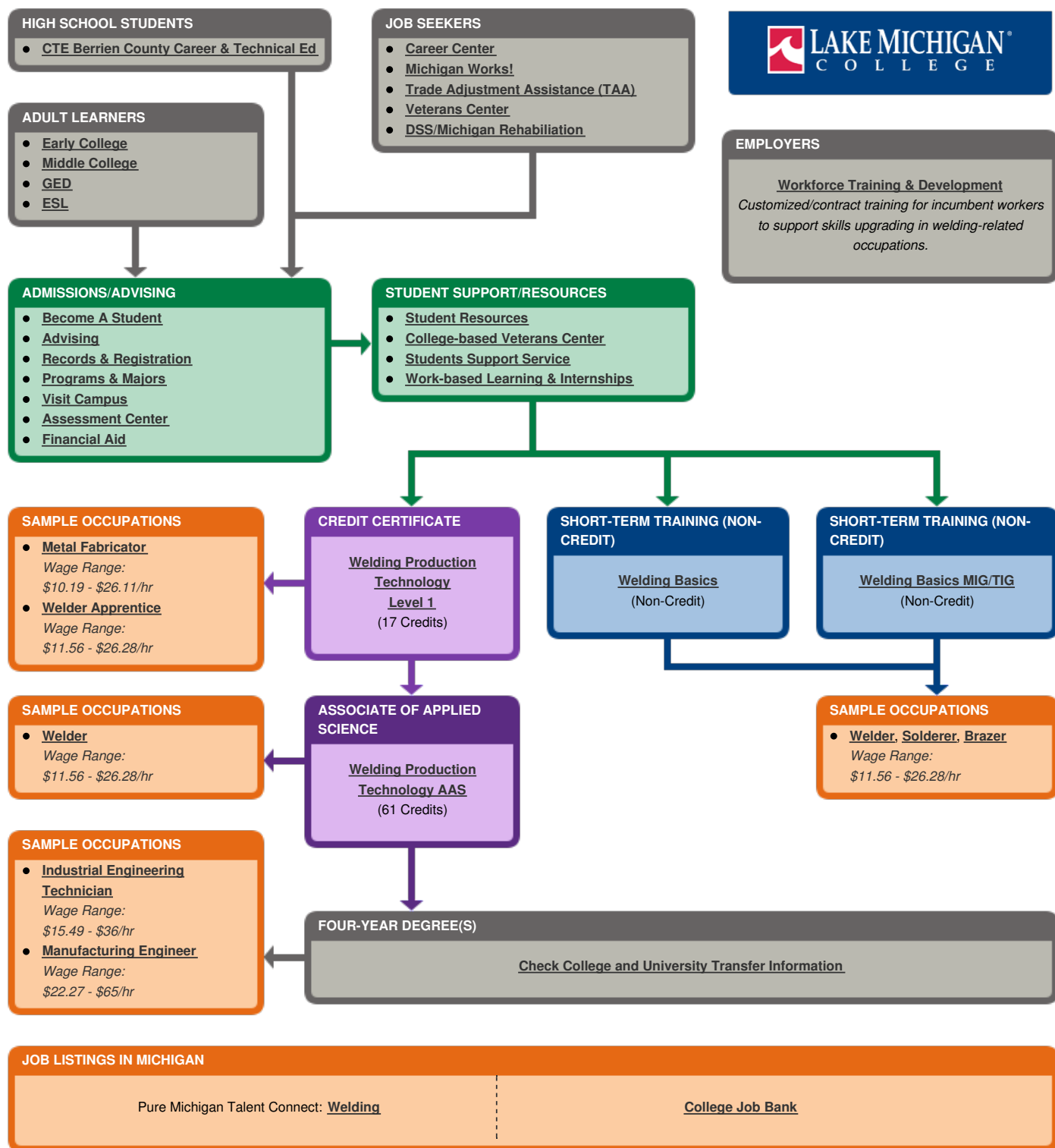
This workforce solution was funded by a grant awarded by the U.S. Department of Labor's Employment and Training Administration. The solution was created by the grantee and does not necessarily reflect the official position of the U.S. Department of Labor. The Department of Labor makes no guarantees, warranties, or assurances of any kind, express or implied, with respect to such information, including any information on linked sites and including, but not limited to, accuracy of the information or its completeness, timeliness, usefulness, adequacy, continued availability, or ownership.

The eight community colleges and M-CAM is an equal opportunity employer/program provider. Auxiliary aids and services are available upon request to individuals with disabilities. TTY users please call 1-877-878-8464 or visit [michigan.gov/mdcr](http://michigan.gov/mdcr). This work is licensed under a Creative Commons Attribution 4.0 International License.



# Lake Michigan College CAREER PATHWAYS Welding

Industry Cluster: Manufacturing



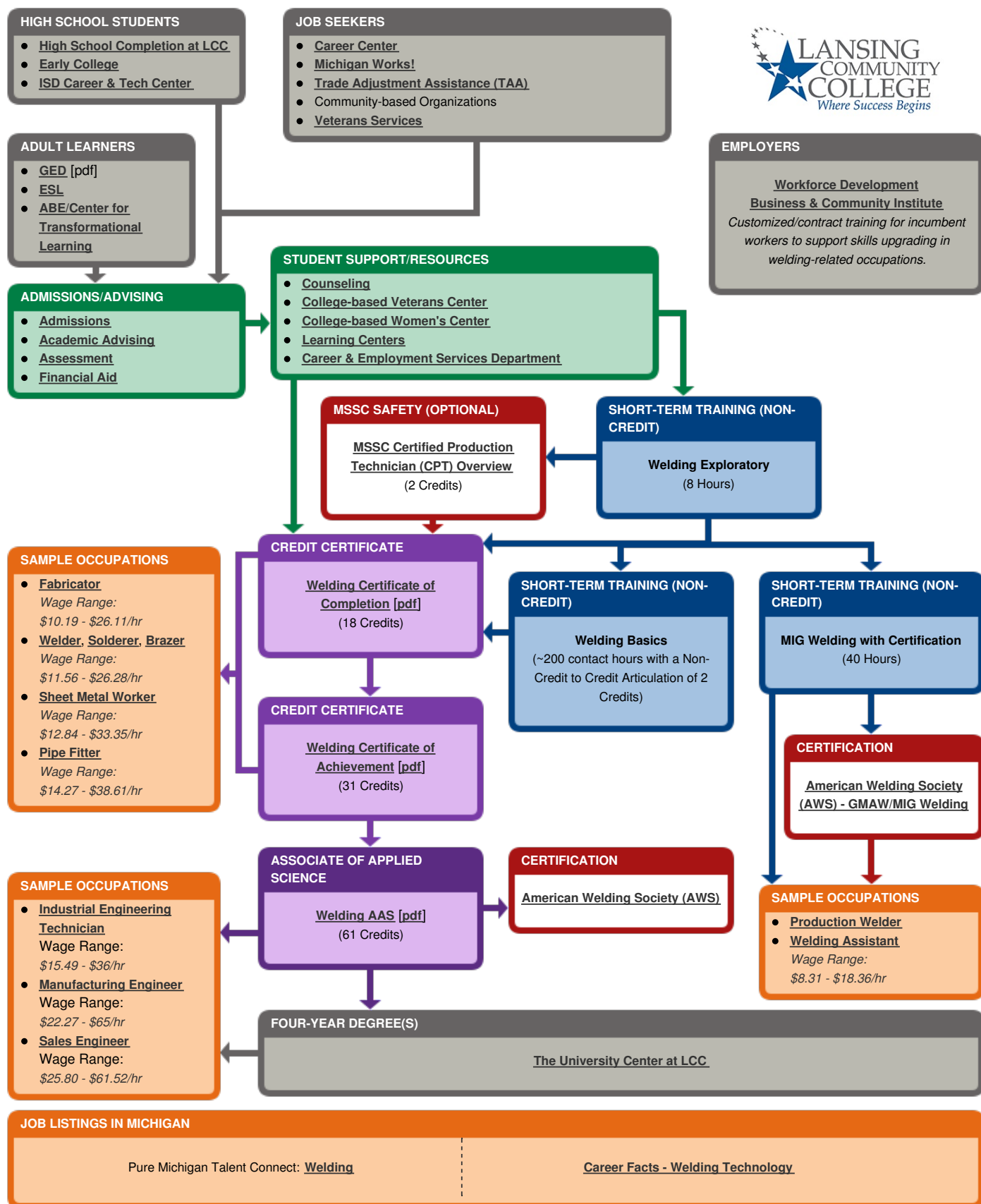
This workforce solution was funded by a grant awarded by the U.S. Department of Labor's Employment and Training Administration. The solution was created by the grantee and does not necessarily reflect the official position of the U.S. Department of Labor. The Department of Labor makes no guarantees, warranties, or assurances of any kind, express or implied, with respect to such information, including any information on linked sites and including, but not limited to, accuracy of the information or its completeness, timeliness, usefulness, adequacy, continued availability, or ownership.

The eight community colleges and M-CAM is an equal opportunity employer/program provider. Auxiliary aids and services are available upon request to individuals with disabilities. If users please call 1-877-878-8464 or visit [michigan.gov/mdcr](http://michigan.gov/mdcr). This work is licensed under a Creative Commons Attribution 4.0 International License.



# Lansing Community College CAREER PATHWAYS Welding

Industry Cluster: Manufacturing



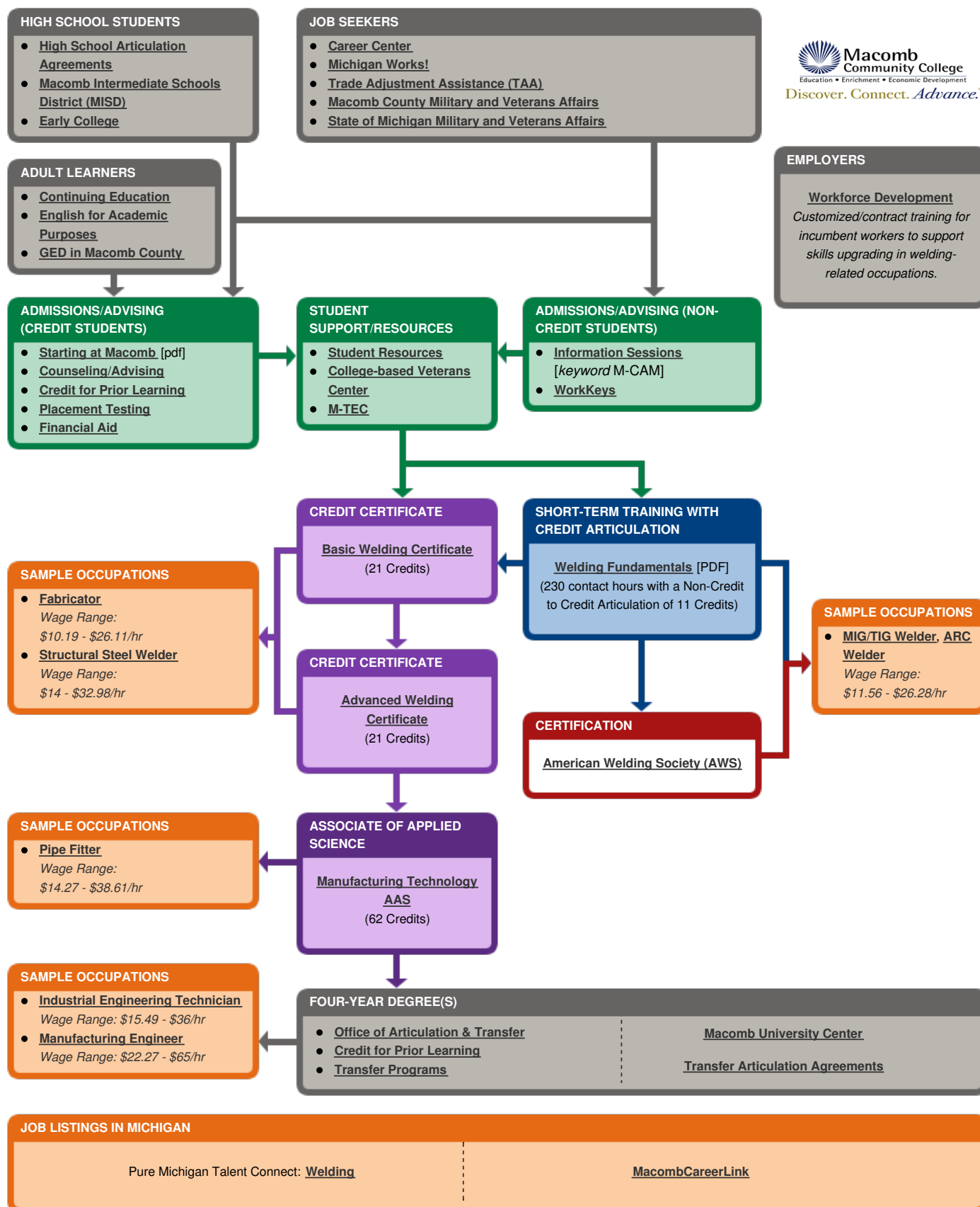
This workforce solution was funded by a grant awarded by the U.S. Department of Labor's Employment and Training Administration. The solution was created by the grantee and does not necessarily reflect the official position of the U.S. Department of Labor. The Department of Labor makes no guarantees, warranties, or assurances of any kind, express or implied, with respect to such information, including any information on linked sites and including, but not limited to, accuracy of the information or its completeness, timeliness, usefulness, adequacy, continued availability, or ownership.

The eight community colleges and M-CAM is an equal opportunity employer/program provider. Auxiliary aids and services are available upon request to individuals with disabilities. TTY users please call 1-877-878-8464 or visit [michigan.gov/mdcr](http://michigan.gov/mdcr). This work is licensed under a Creative Commons Attribution 4.0 International License.



# Macomb Community College CAREER PATHWAYS Welding

Industry Cluster: Manufacturing



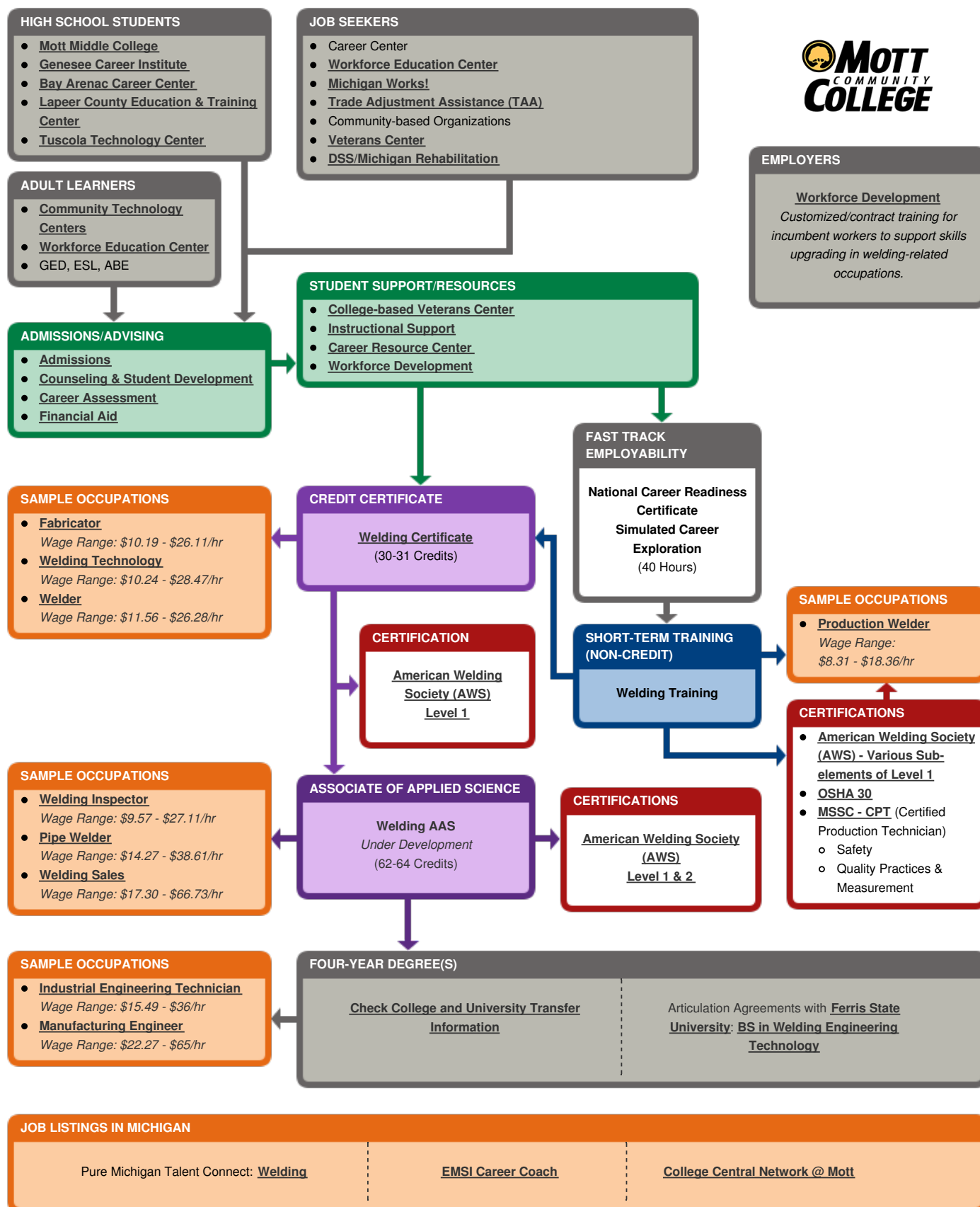
This workforce solution was funded by a grant awarded by the U.S. Department of Labor's Employment and Training Administration. The solution was created by the grantee and does not necessarily reflect the official position of the U.S. Department of Labor. The Department of Labor makes no guarantees, warranties, or assurances of any kind, express or implied, with respect to such information, including any information on linked sites and including, but not limited to, accuracy of the information or its completeness, timeliness, usefulness, adequacy, continued availability, or ownership.

The eight community colleges and M-CAM is an equal opportunity employer/program provider. Auxiliary aids and services are available upon request to individuals with disabilities. TTY users please call 1-877-878-8464 or visit [michigan.gov/mdcr](http://michigan.gov/mdcr). This work is licensed under a Creative Commons Attribution 4.0 International License.



# Mott Community College CAREER PATHWAYS Welding

Industry Cluster: Manufacturing



This workforce solution was funded by a grant awarded by the U.S. Department of Labor's Employment and Training Administration. The solution was created by the grantee and does not necessarily reflect the official position of the U.S. Department of Labor. The Department of Labor makes no guarantees, warranties, or assurances of any kind, express or implied, with respect to such information, including any information on linked sites and including, but not limited to, accuracy of the information or its completeness, timeliness, usefulness, adequacy, continued availability, or ownership.

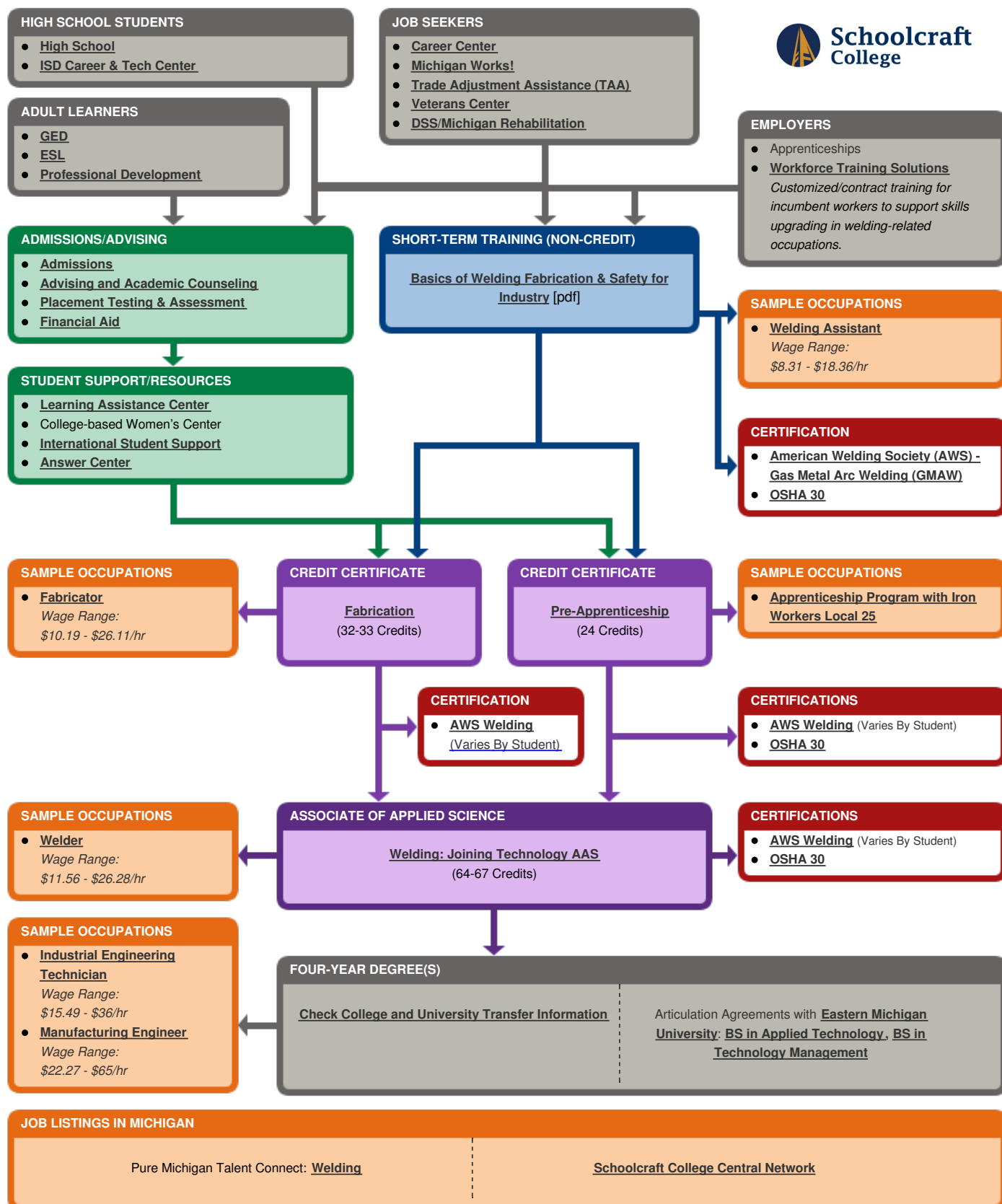
The eight community colleges and M-CAM is an equal opportunity employer/program provider. Auxiliary aids and services are available upon request to individuals with disabilities. TTY users please call 1-877-878-8464 or visit [michigan.gov/mdcr](http://michigan.gov/mdcr). This work is licensed under a Creative Commons Attribution 4.0 International License.





# Schoolcraft College CAREER PATHWAYS Welding

Industry Cluster: Manufacturing



This workforce solution was funded by a grant awarded by the U.S. Department of Labor's Employment and Training Administration. The solution was created by the grantee and does not necessarily reflect the official position of the U.S. Department of Labor. The Department of Labor makes no guarantees, warranties, or assurances of any kind, express or implied, with respect to such information, including any information on linked sites and including, but not limited to, accuracy of the information or its completeness, timeliness, usefulness, adequacy, continued availability, or ownership.

The eight community colleges and M-CAM is an equal opportunity employer/program provider. Auxiliary aids and services are available upon request to individuals with disabilities. TTY users please call 1-877-878-8464 or visit [michigan.gov/mdcr](http://michigan.gov/mdcr). This work is licensed under a Creative Commons Attribution 4.0 International License.

