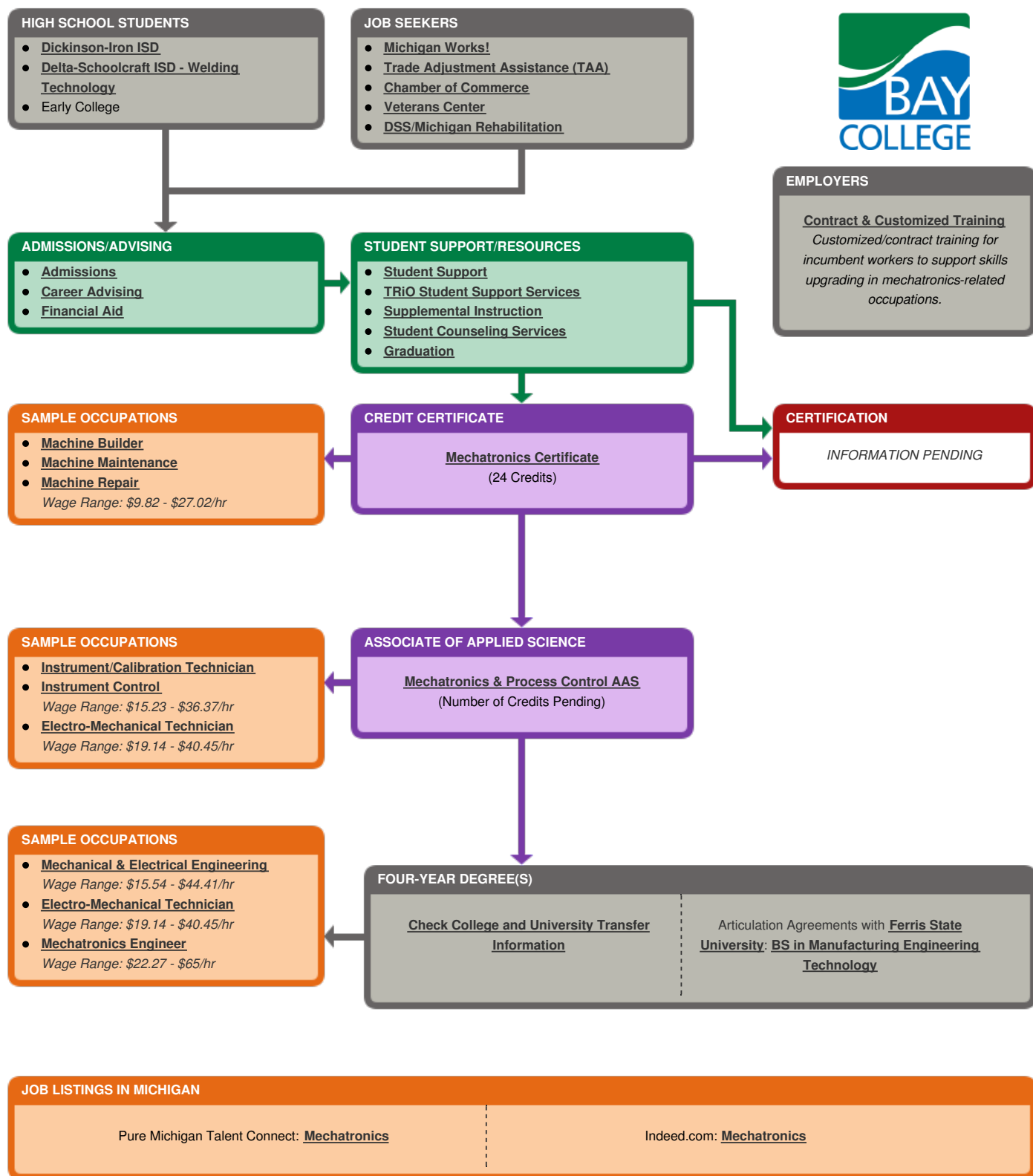


# Bay College CAREER PATHWAYS Multi-Skilled/Mechatronics

Industry Cluster: Manufacturing



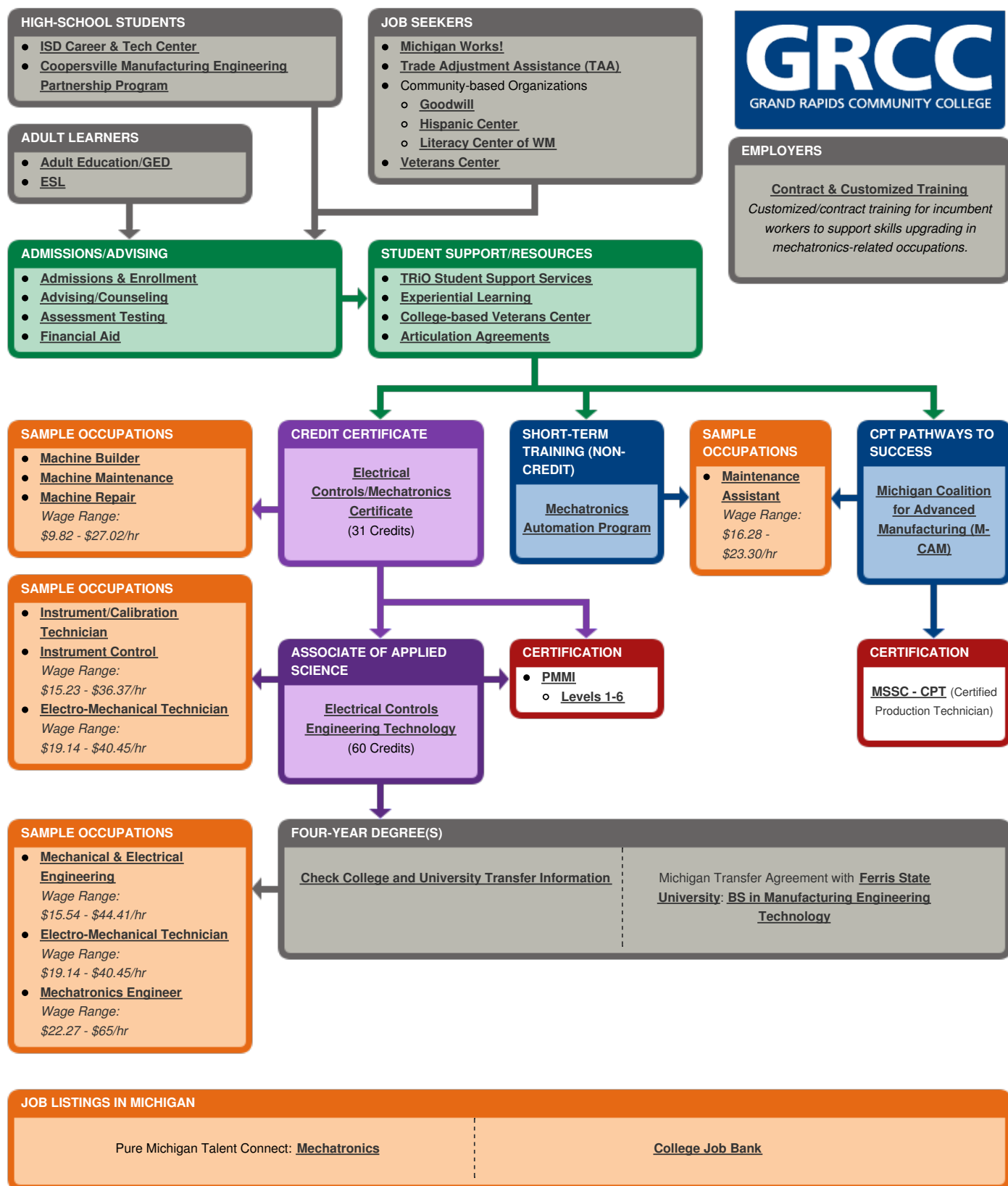
This workforce solution was funded by a grant awarded by the U.S. Department of Labor's Employment and Training Administration. The solution was created by the grantee and does not necessarily reflect the official position of the U.S. Department of Labor. The Department of Labor makes no guarantees, warranties, or assurances of any kind, express or implied, with respect to such information, including any information on linked sites and including, but not limited to, accuracy of the information or its completeness, timeliness, usefulness, adequacy, continued availability, or ownership.

The eight community colleges and M-CAM is an equal opportunity employer/program provider. Auxiliary aids and services are available upon request to individuals with disabilities. TTY users please call 1-877-878-8464 or visit [michigan.gov/mdcr](http://michigan.gov/mdcr). This work is licensed under a Creative Commons Attribution 4.0 International License.



# Grand Rapids Community College CAREER PATHWAYS Multi-Skilled/Mechatronics

Industry Cluster: Manufacturing



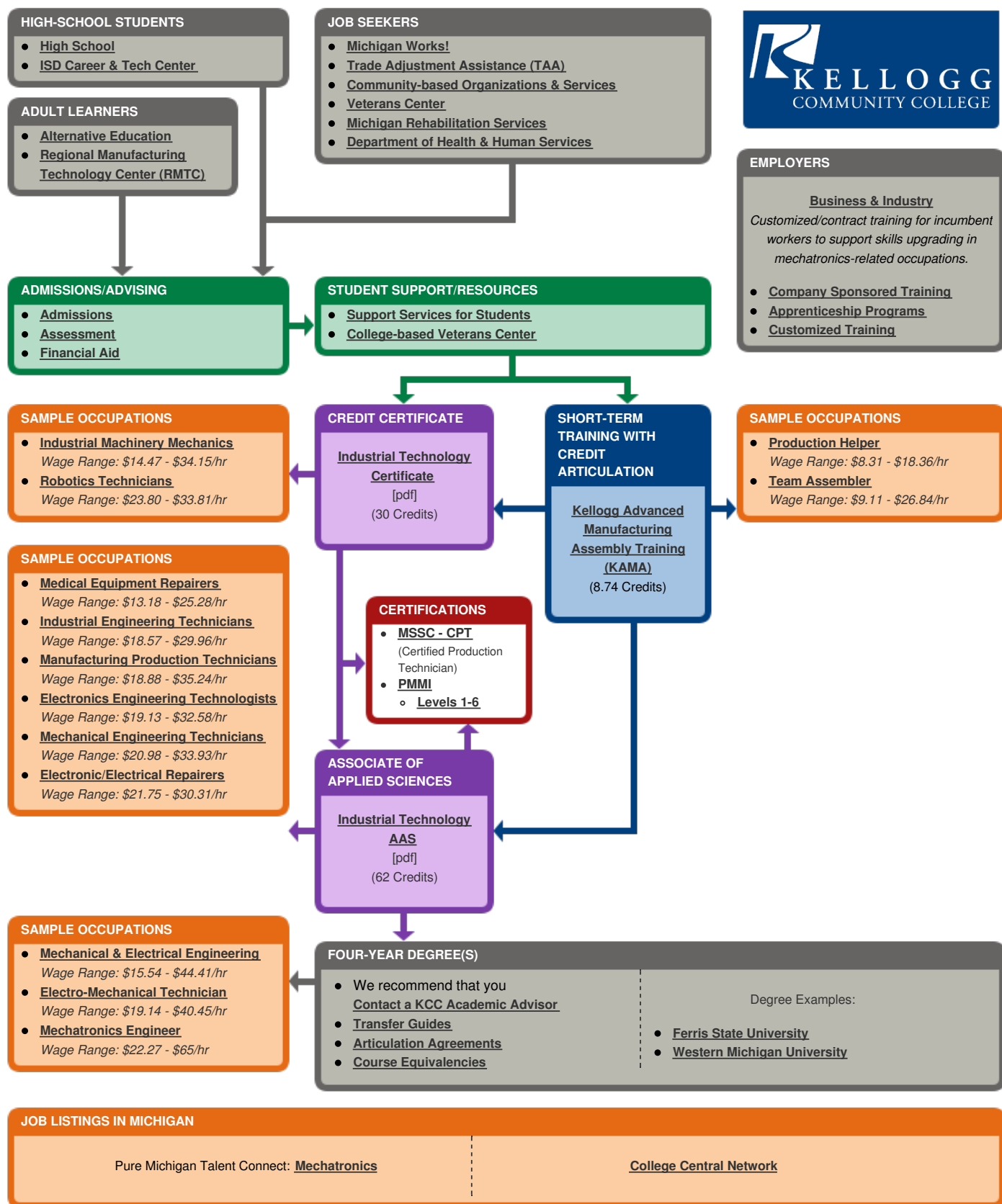
This workforce solution was funded by a grant awarded by the U.S. Department of Labor's Employment and Training Administration. The solution was created by the grantee and does not necessarily reflect the official position of the U.S. Department of Labor. The Department of Labor makes no guarantees, warranties, or assurances of any kind, express or implied, with respect to such information, including any information on linked sites and including, but not limited to, accuracy of the information or its completeness, timeliness, usefulness, adequacy, continued availability, or ownership.

The eight community colleges and M-CAM is an equal opportunity employer/program provider. Auxiliary aids and services are available upon request to individuals with disabilities. TTY users please call 1-877-878-8464 or visit [michigan.gov/mdcr](http://michigan.gov/mdcr). This work is licensed under a Creative Commons Attribution 4.0 International License.



# Kellogg Community College CAREER PATHWAYS Multi-Skilled/Mechatronics

Industry Cluster: Manufacturing



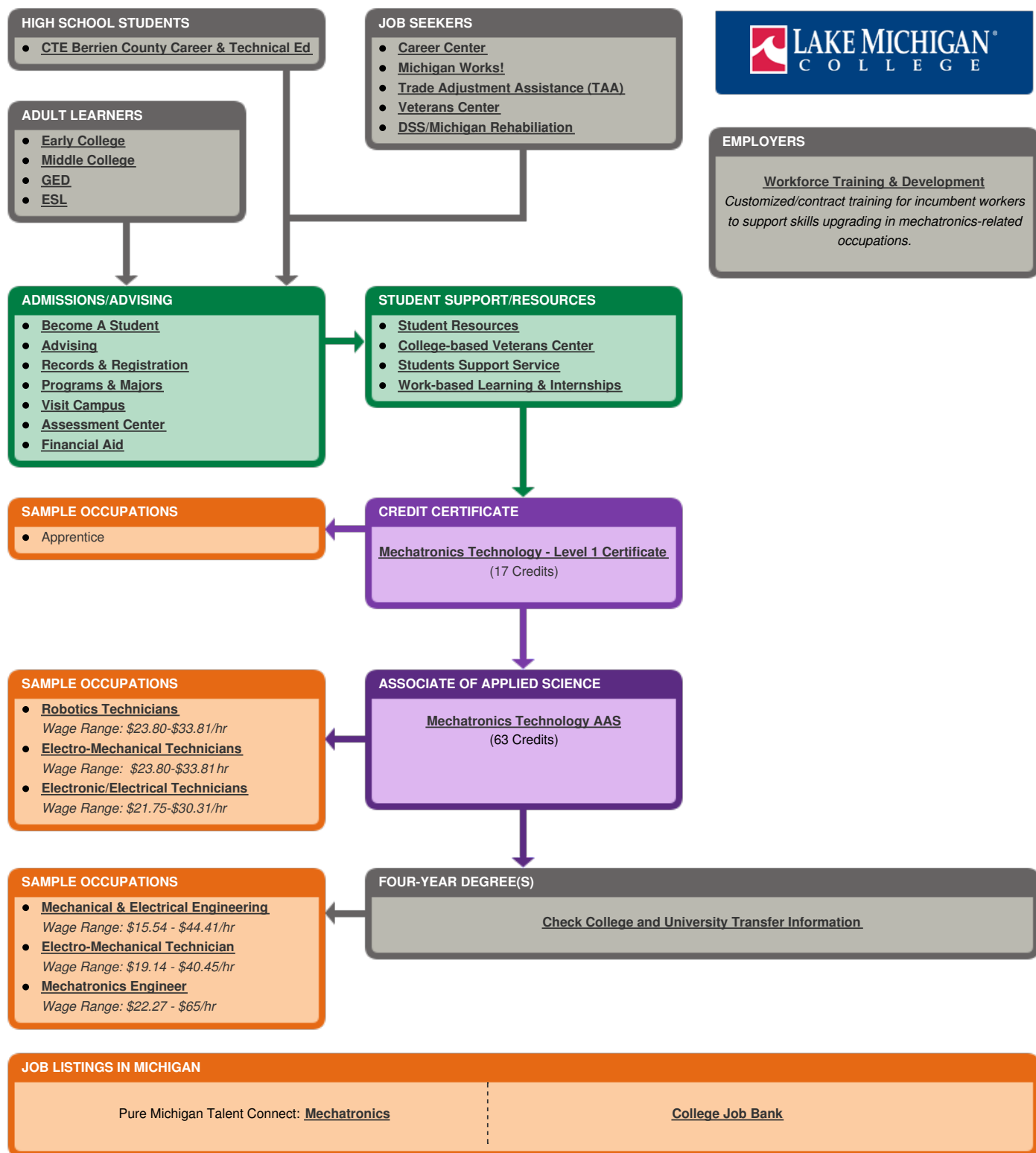
This workforce solution was funded by a grant awarded by the U.S. Department of Labor's Employment and Training Administration. The solution was created by the grantee and does not necessarily reflect the official position of the U.S. Department of Labor. The Department of Labor makes no guarantees, warranties, or assurances of any kind, express or implied, with respect to such information, including any information on linked sites and including, but not limited to, accuracy of the information or its completeness, timeliness, usefulness, adequacy, continued availability, or ownership.

The eight community colleges and M-CAM is an equal opportunity employer/program provider. Auxiliary aids and services are available upon request to individuals with disabilities. TTY users please call 1-877-878-8464 or visit [michigan.gov/mdcr](http://michigan.gov/mdcr). This work is licensed under a Creative Commons Attribution 4.0 International License.



# Lake Michigan College CAREER PATHWAYS Multi-Skilled/Mechatronics

Industry Cluster: Manufacturing



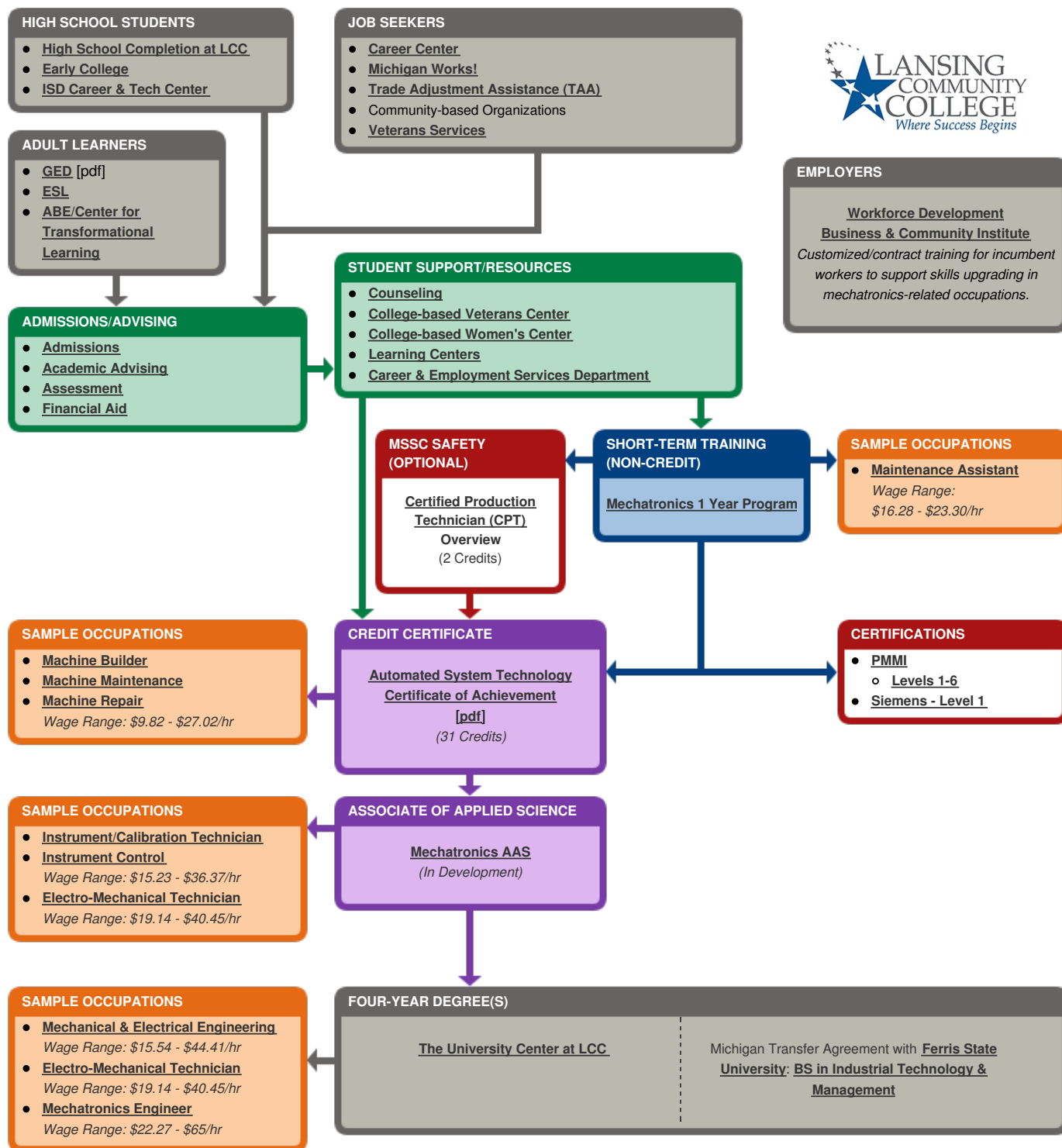
This workforce solution was funded by a grant awarded by the U.S. Department of Labor's Employment and Training Administration. The solution was created by the grantee and does not necessarily reflect the official position of the U.S. Department of Labor. The Department of Labor makes no guarantees, warranties, or assurances of any kind, express or implied, with respect to such information, including any information on linked sites and including, but not limited to, accuracy of the information or its completeness, timeliness, usefulness, adequacy, continued availability, or ownership.

The eight community colleges and M-CAM is an equal opportunity employer/program provider. Auxiliary aids and services are available upon request to individuals with disabilities. If users please call 1-877-878-8464 or visit [michigan.gov/mdcr](http://michigan.gov/mdcr). This work is licensed under a Creative Commons Attribution 4.0 International License.



# Lansing Community College CAREER PATHWAYS Multi-Skilled/Mechatronics

Industry Cluster: Manufacturing



## JOB LISTINGS IN MICHIGAN

Pure Michigan Talent Connect: [Mechatronics](#)

[Career Facts - Mechatronics](#)

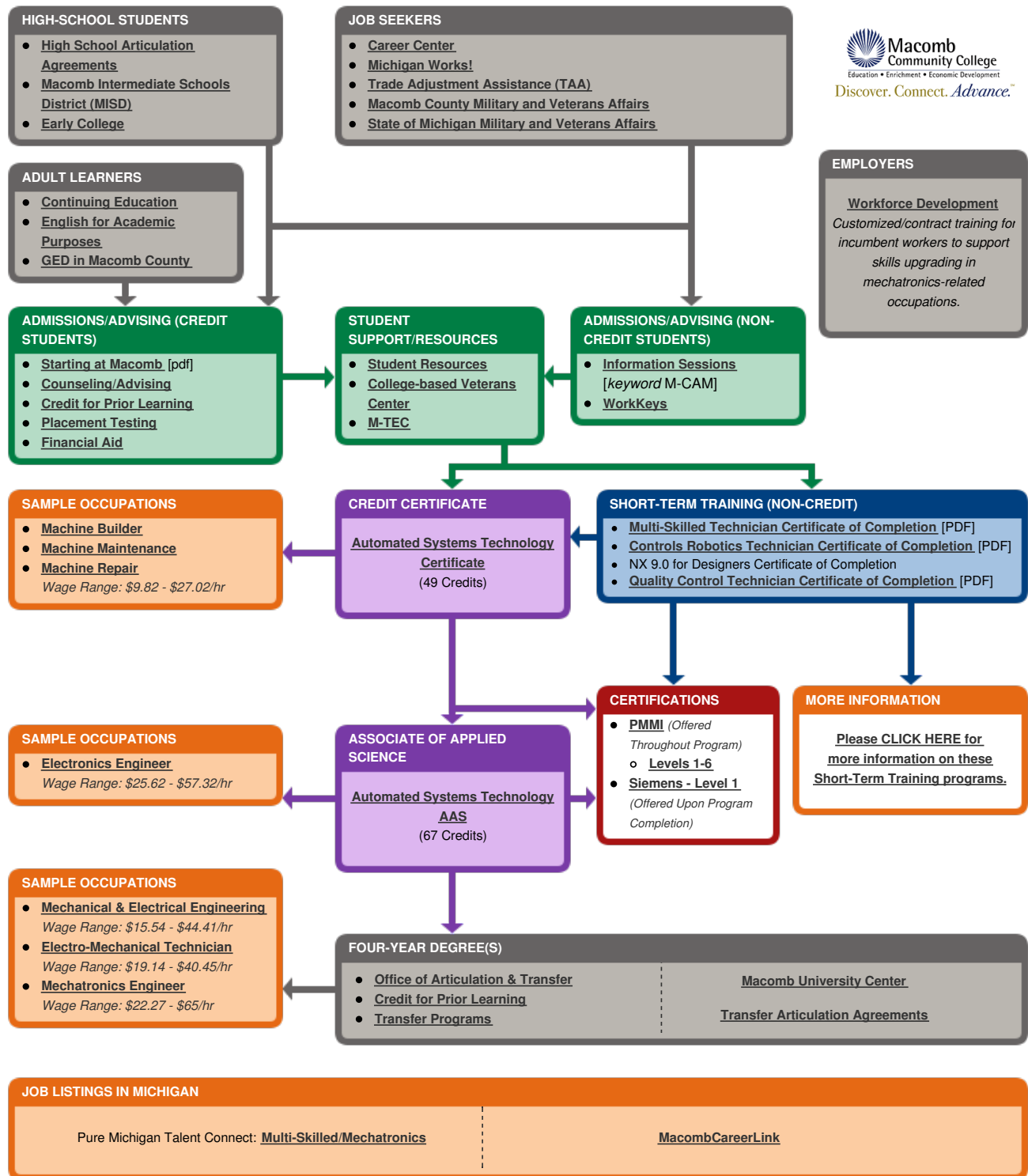
This workforce solution was funded by a grant awarded by the U.S. Department of Labor's Employment and Training Administration. The solution was created by the grantee and does not necessarily reflect the official position of the U.S. Department of Labor. The Department of Labor makes no guarantees, warranties, or assurances of any kind, express or implied, with respect to such information, including any information on linked sites and including, but not limited to, accuracy of the information or its completeness, timeliness, usefulness, adequacy, continued availability, or ownership.

The eight community colleges and M-CAM is an equal opportunity employer/program provider. Auxiliary aids and services are available upon request to individuals with disabilities. TTY users please call 1-877-878-8464 or visit [michigan.gov/mdcr](http://michigan.gov/mdcr). This work is licensed under a Creative Commons Attribution 4.0 International License.



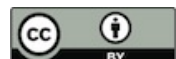
# Macomb Community College CAREER PATHWAYS Multi-Skilled/Mechatronics

Industry Cluster: Manufacturing



This workforce solution was funded by a grant awarded by the U.S. Department of Labor's Employment and Training Administration. The solution was created by the grantee and does not necessarily reflect the official position of the U.S. Department of Labor. The Department of Labor makes no guarantees, warranties, or assurances of any kind, express or implied, with respect to such information, including any information on linked sites and including, but not limited to, accuracy of the information or its completeness, timeliness, usefulness, adequacy, continued availability, or ownership.

The eight community colleges and M-CAM is an equal opportunity employer/program provider. Auxiliary aids and services are available upon request to individuals with disabilities. TTY users please call 1-877-878-8464 or visit [michigan.gov/mdcr](http://michigan.gov/mdcr). This work is licensed under a Creative Commons Attribution 4.0 International License.



**SHORT-TERM TRAINING NON-CREDIT**

The following Non-Credit Courses are offered at Macomb Community College:



**SHORT-TERM TRAINING WITH CREDIT ARTICULATION**

**Multi-Skilled Technician**

**Certificate of Completion [PDF]**

(736 Contact Hours with a Non-Credit to Credit Articulation of 33 Credit Hours)

**SAMPLE OCCUPATIONS**

- **Material Handler**  
Wage Range: \$8.31 - \$18.36/hr
- **Electrical Panel Builder**  
Wage Range: \$8.90 - \$23.06/hr
- **Maintenance Technician, Machine Builder, Machine Repair, Entry-Level Maintenance**  
Wage Range: \$9.82 - \$27.02/hr
- **Electrician Engineer Technician, PLC Maintenance Technician**  
Wage Range: \$15.23 - \$36.37/hr
- **Electronics Engineering Technician**  
Wage Range: \$15.23 - \$36.37/hr
- **Technician Equipment Installer, Field Service Technician**  
Wage Range: \$18.14 - \$35.33/hr

[<< Return to Macomb Multi-Skilled/Mechatronics Roadmap](#)  
[Print PDF Version](#)

**SHORT-TERM TRAINING (NON-CREDIT)**

**Controls Robotics Technician**

**Certificate of Completion [PDF]**

(416 Contact Hours)

**SAMPLE OCCUPATIONS**

- **PLC Programmer, PLC Maintenance Technician**  
Wage Range: \$15.23 - \$36.37/hr
- **Robotics Technicians**  
Wage Range: \$19.14 - \$40.45/hr
- **Controls/Electronics Engineer**  
Wage Range: \$25.62 - \$57.32/hr

**SHORT-TERM TRAINING (NON-CREDIT)**

**NX 9.0 for Designers**  
**Certificate of Completion**  
(232 Contact Hours)

**SAMPLE OCCUPATIONS**

- **Design Tech**  
Wage Range: \$15.54 - \$44.41/hr

**SHORT-TERM TRAINING (NON-CREDIT)**

**Quality Control Technician**

**Certificate of Completion [PDF]**

(160 Contact Hours)

**SAMPLE OCCUPATIONS**

- **Quality Control Engineering Technician**  
Wage Range: \$15.49 - \$36/hr

*This workforce solution was funded by a grant awarded by the U.S. Department of Labor's Employment and Training Administration. The solution was created by the grantee and does not necessarily reflect the official position of the U.S. Department of Labor. The Department of Labor makes no guarantees, warranties, or assurances of any kind, express or implied, with respect to such information, including any information on linked sites and including, but not limited to, accuracy of the information or its completeness, timeliness, usefulness, adequacy, continued availability, or ownership.*

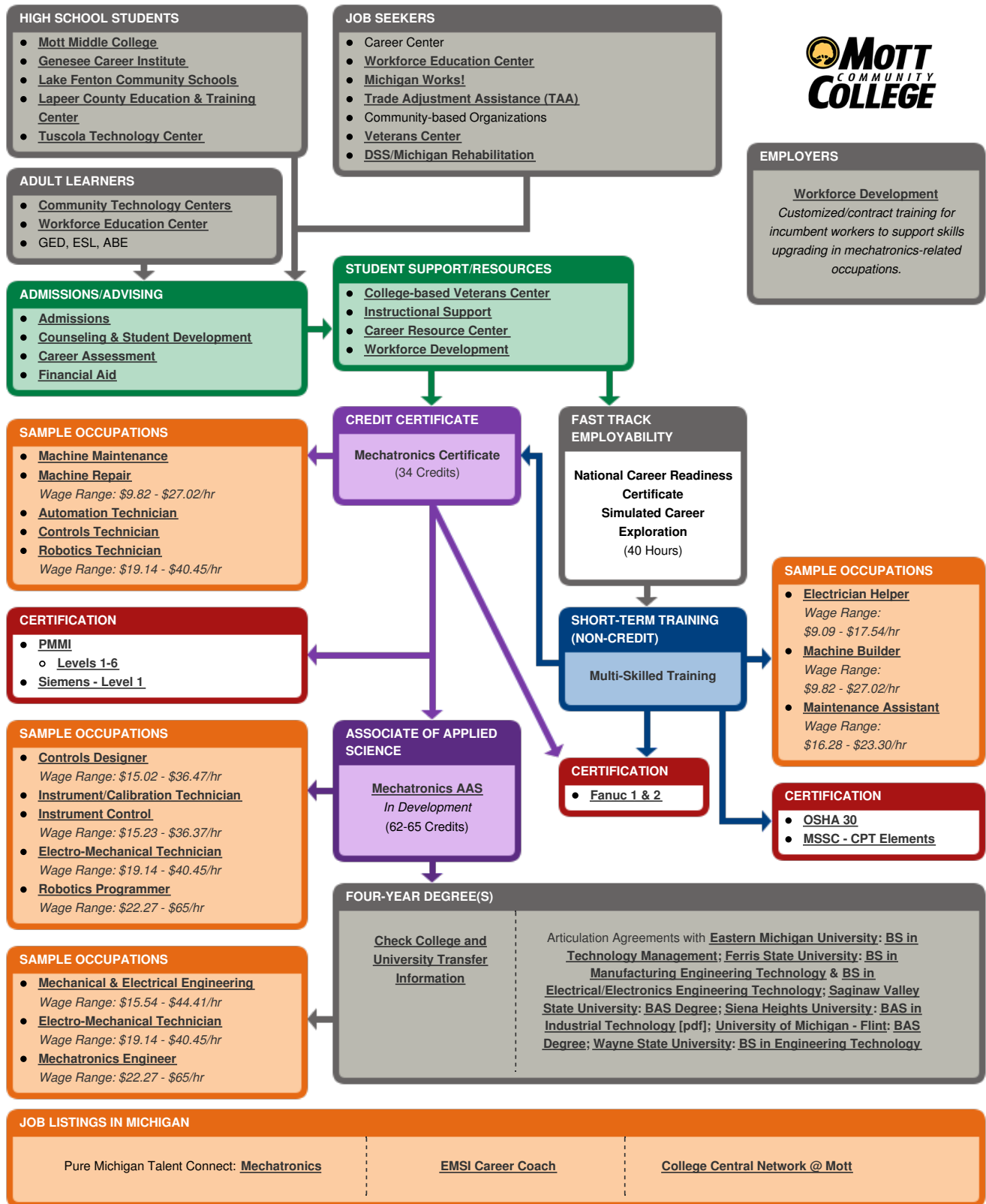
*The eight community colleges and M-CAM is an equal opportunity employer/program provider. Auxiliary aids and services are available upon request to individuals with disabilities. TTY users please call 1-877-878-8464 or visit [michigan.gov/mdcr](http://michigan.gov/mdcr). This work is licensed under a Creative Commons Attribution 4.0 International License.*





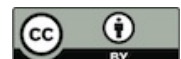
# Mott Community College CAREER PATHWAYS Multi-Skilled/Mechatronics

Industry Cluster: Manufacturing



This workforce solution was funded by a grant awarded by the U.S. Department of Labor's Employment and Training Administration. The solution was created by the grantee and does not necessarily reflect the official position of the U.S. Department of Labor. The Department of Labor makes no guarantees, warranties, or assurances of any kind, express or implied, with respect to such information, including any information on linked sites and including, but not limited to, accuracy of the information or its completeness, timeliness, usefulness, adequacy, continued availability, or ownership.

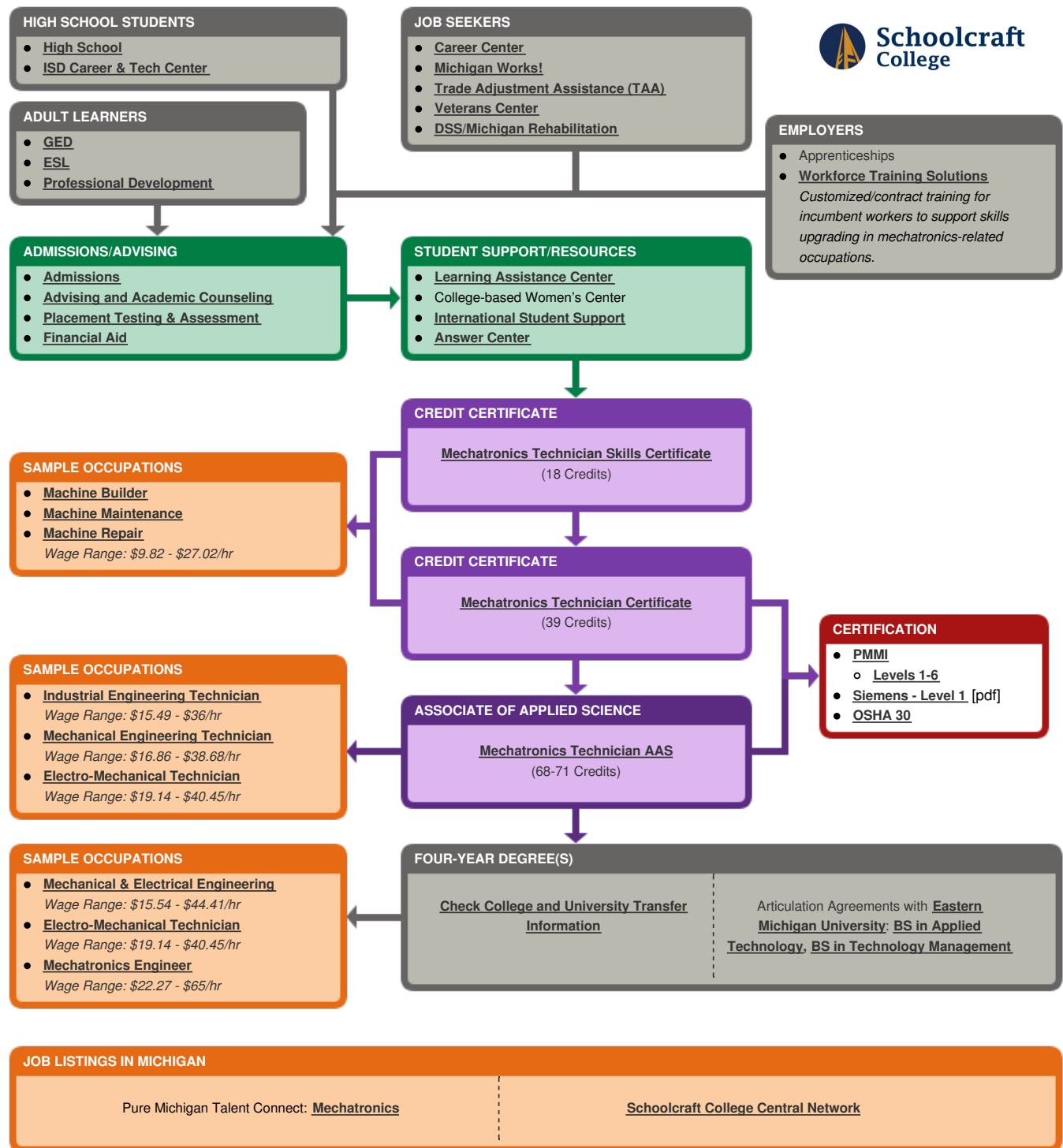
The eight community colleges and M-CAM is an equal opportunity employer/program provider. Auxiliary aids and services are available upon request to individuals with disabilities. TTY users please call 1-877-878-8464 or visit [michigan.gov/mdcr](http://michigan.gov/mdcr). This work is licensed under a Creative Commons Attribution 4.0 International License.





# Schoolcraft College CAREER PATHWAYS Multi-Skilled/Mechatronics

Industry Cluster: Manufacturing



This workforce solution was funded by a grant awarded by the U.S. Department of Labor's Employment and Training Administration. The solution was created by the grantee and does not necessarily reflect the official position of the U.S. Department of Labor. The Department of Labor makes no guarantees, warranties, or assurances of any kind, express or implied, with respect to such information, including any information on linked sites and including, but not limited to, accuracy of the information or its completeness, timeliness, usefulness, adequacy, continued availability, or ownership.

The eight community colleges and M-CAM is an equal opportunity employer/program provider. Auxiliary aids and services are available upon request to individuals with disabilities. If users please call 1-877-878-8464 or visit [michigan.gov/mdcr](http://michigan.gov/mdcr). This work is licensed under a Creative Commons Attribution 4.0 International License.

