

Grand Rapids Community College CAREER PATHWAYS CNC/Machining

Industry Cluster: Manufacturing



EMPLOYERS

Contract & Customized Training
Customized/contract training for incumbent workers to support skills upgrading in machining-related occupations.

HIGH SCHOOL STUDENTS

- [ISD Career & Tech Center](#)
- [Coopersville Manufacturing Engineering Partnership Program](#)

ADULT LEARNERS

- [Adult Education/GED](#)
- [ESL](#)

JOB SEEKERS

- [Michigan Works!](#)
- [Trade Adjustment Assistance \(TAA\)](#)
- Community-based Organizations
 - [Goodwill](#)
 - [Hispanic Center](#)
 - [Literacy Center of WM](#)
- [Veterans Center](#)

ADMISSIONS/ADVISING

- [Admissions & Enrollment](#)
- [Advising/Counseling](#)
- [Assessment Testing](#)
- [Financial Aid](#)

STUDENT SUPPORT/RESOURCES

- [TRIO Student Support Services](#)
- [Experiential Learning](#)
- [College-based Veterans Center](#)
- [Articulation Agreements](#)

SAMPLE OCCUPATIONS

- [CNC Operator](#)
Wage Range: \$10.04 - \$24.78/hr
- [CNC Machinist](#)
Wage Range: \$11.09 - \$29.26/hr

CREDIT CERTIFICATE

[Tooling & Manufacturing Technology Certificate](#)
(31 Credits)

SHORT-TERM TRAINING (NON-CREDIT)

[Machining Job Training](#)
(Equivalent to 13 Credits)

CPT PATHWAYS TO SUCCESS

[Michigan Coalition for Advanced Manufacturing \(M-CAM\)](#)

SAMPLE OCCUPATIONS

- [Machinist](#)
Wage Range: \$11.09 - \$29.26/hr
- [CNC Programmer](#)
Wage Range: \$19.12 - \$27.26/hr
- [Tool & Die Maker](#)
Wage Range: \$19.67 - \$31.27/hr
- [Machine Builder](#)
Wage Range: \$17.95 - \$27.76/hr

ASSOCIATE OF APPLIED SCIENCE

[Tooling & Manufacturing Technology Degree](#)
(62 Credits)

CERTIFICATION

[National Institute for Metalworking Skills \(NIMS\)](#)

- Measurement, Materials & Safety
- CNC Turning Operations
- CNC Milling Operations

CERTIFICATION

[MSSC - CPT](#)
(Certified Production Technician)

MANUFACTURING APPRENTICESHIPS

[AutoCam Apprenticeship](#)
(27 Credits)

FOUR-YEAR DEGREE(S)

[Check College and University Transfer Information](#)

Michigan Transfer Agreement with [Ferris State University](#): [BS in Manufacturing Engineering Technology](#), [BAS in Industrial Technology & Management](#), [Tooling Concentration](#)

JOB LISTINGS IN MICHIGAN

Pure Michigan Talent Connect: [CNC/Machining](#)

[College Job Bank](#)

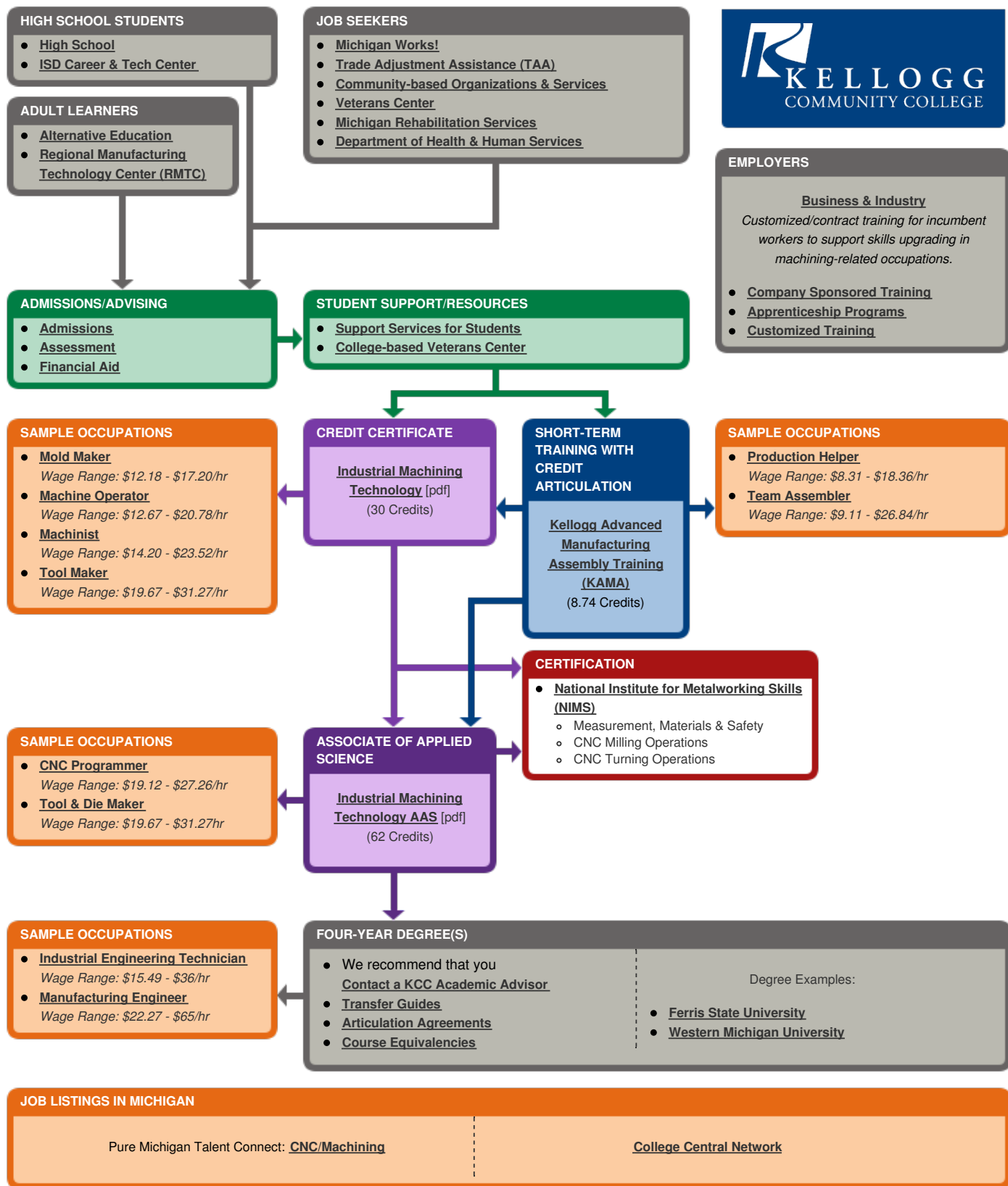
This workforce solution was funded by a grant awarded by the U.S. Department of Labor's Employment and Training Administration. The solution was created by the grantee and does not necessarily reflect the official position of the U.S. Department of Labor. The Department of Labor makes no guarantees, warranties, or assurances of any kind, express or implied, with respect to such information, including any information on linked sites and including, but not limited to, accuracy of the information or its completeness, timeliness, usefulness, adequacy, continued availability, or ownership.

The eight community colleges and M-CAM is an equal opportunity employer/program provider. Auxiliary aids and services are available upon request to individuals with disabilities. TTY users please call 1-877-878-8464 or visit michigan.gov/mdcr. This work is licensed under a Creative Commons Attribution 4.0 International License.



Kellogg Community College CAREER PATHWAYS CNC/Machining

Industry Cluster: Manufacturing



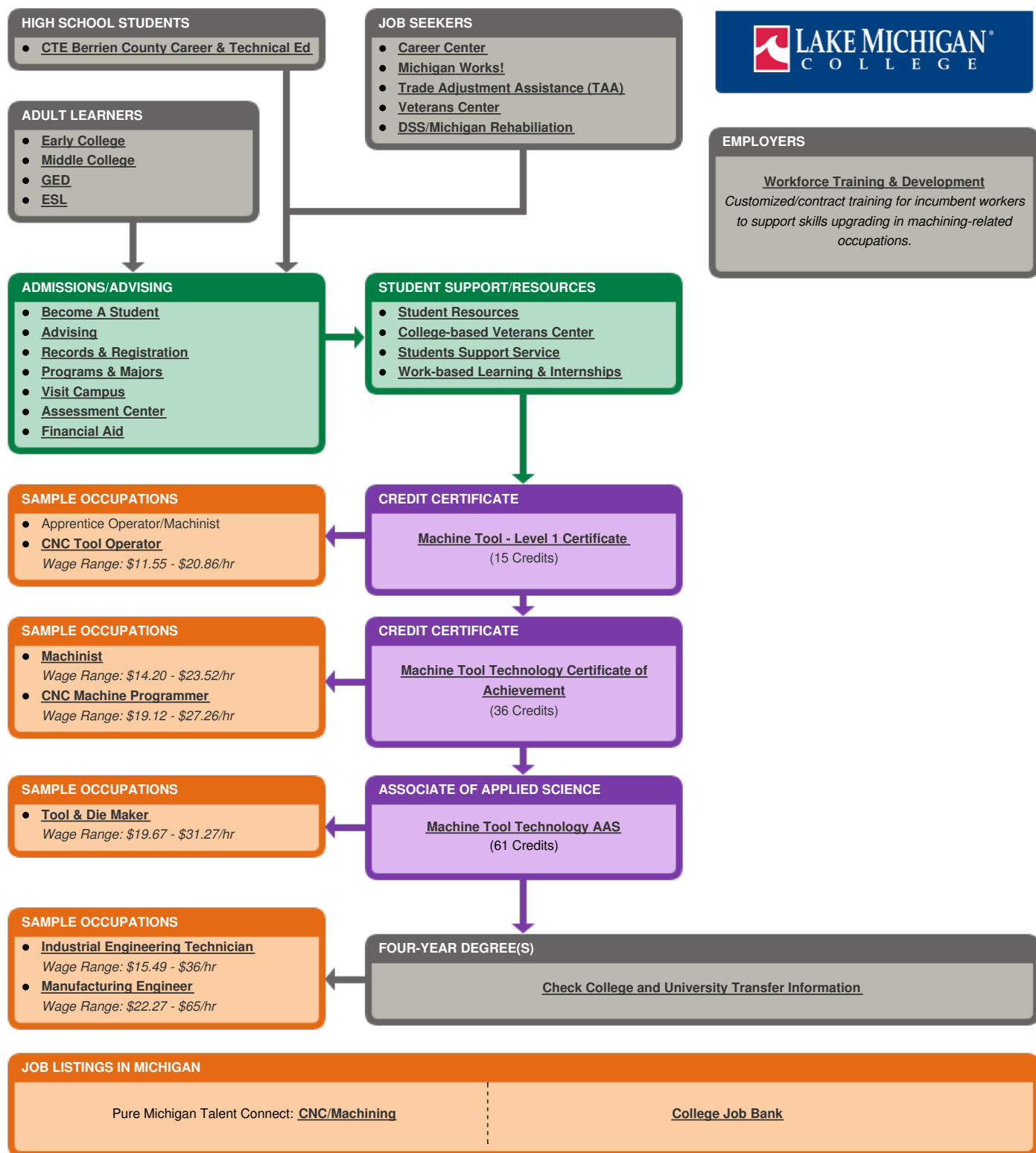
This workforce solution was funded by a grant awarded by the U.S. Department of Labor's Employment and Training Administration. The solution was created by the grantee and does not necessarily reflect the official position of the U.S. Department of Labor. The Department of Labor makes no guarantees, warranties, or assurances of any kind, express or implied, with respect to such information, including any information on linked sites and including, but not limited to, accuracy of the information or its completeness, timeliness, usefulness, adequacy, continued availability, or ownership.

The eight community colleges and M-CAM is an equal opportunity employer/program provider. Auxiliary aids and services are available upon request to individuals with disabilities. TTY users please call 1-877-878-8464 or visit michigan.gov/mdcr. This work is licensed under a Creative Commons Attribution 4.0 International License.



Lake Michigan College CAREER PATHWAYS CNC/Machining

Industry Cluster: Manufacturing



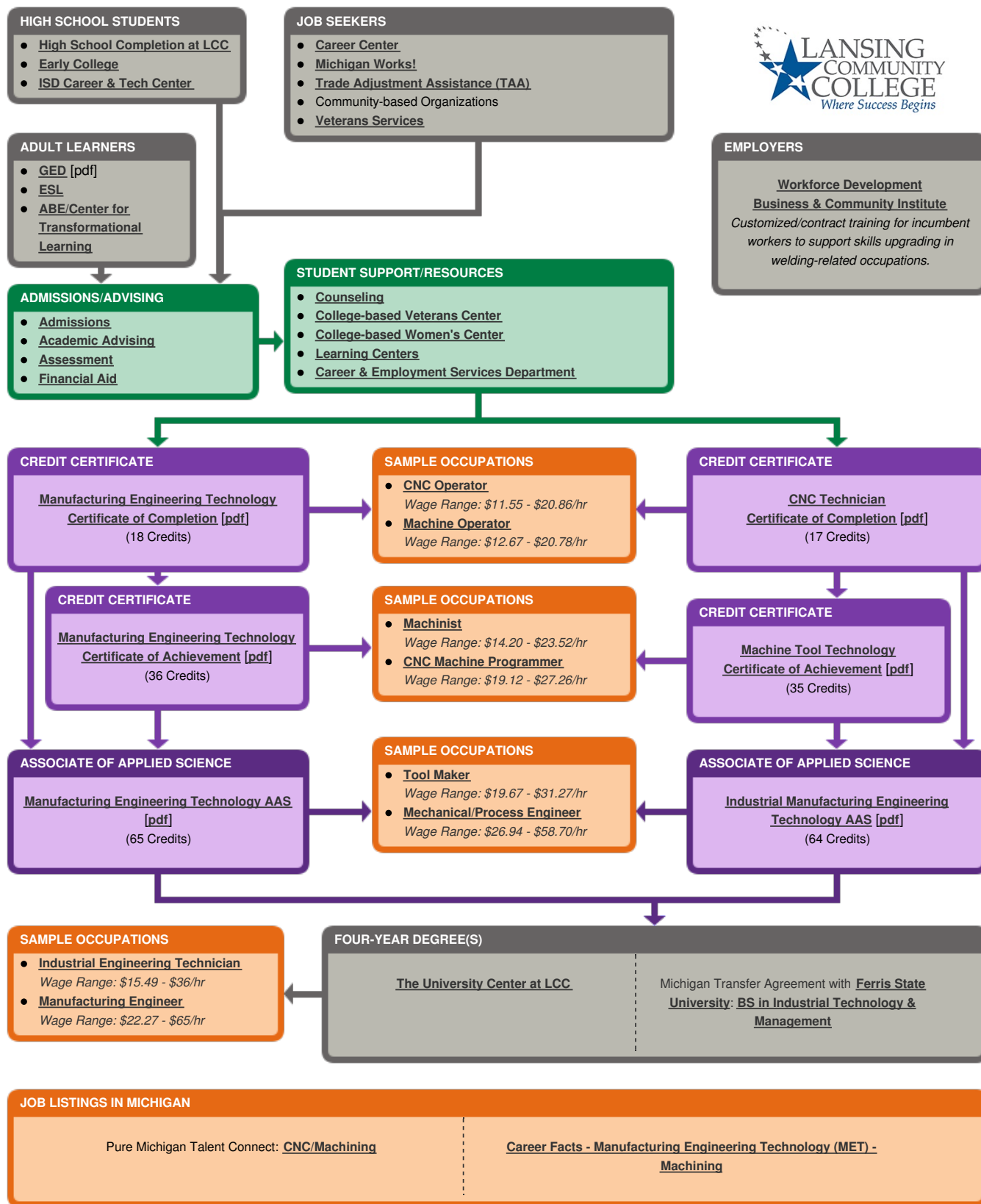
This workforce solution was funded by a grant awarded by the U.S. Department of Labor's Employment and Training Administration. The solution was created by the grantee and does not necessarily reflect the official position of the U.S. Department of Labor. The Department of Labor makes no guarantees, warranties, or assurances of any kind, express or implied, with respect to such information, including any information on linked sites and including, but not limited to, accuracy of the information or its completeness, timeliness, usefulness, adequacy, continued availability, or ownership.

The eight community colleges and M-CAM is an equal opportunity employer/program provider. Auxiliary aids and services are available upon request to individuals with disabilities. If users please call 1-877-878-8464 or visit michigan.gov/mdcr. This work is licensed under a Creative Commons Attribution 4.0 International License.



Lansing Community College CAREER PATHWAYS CNC/Machining

Industry Cluster: Manufacturing



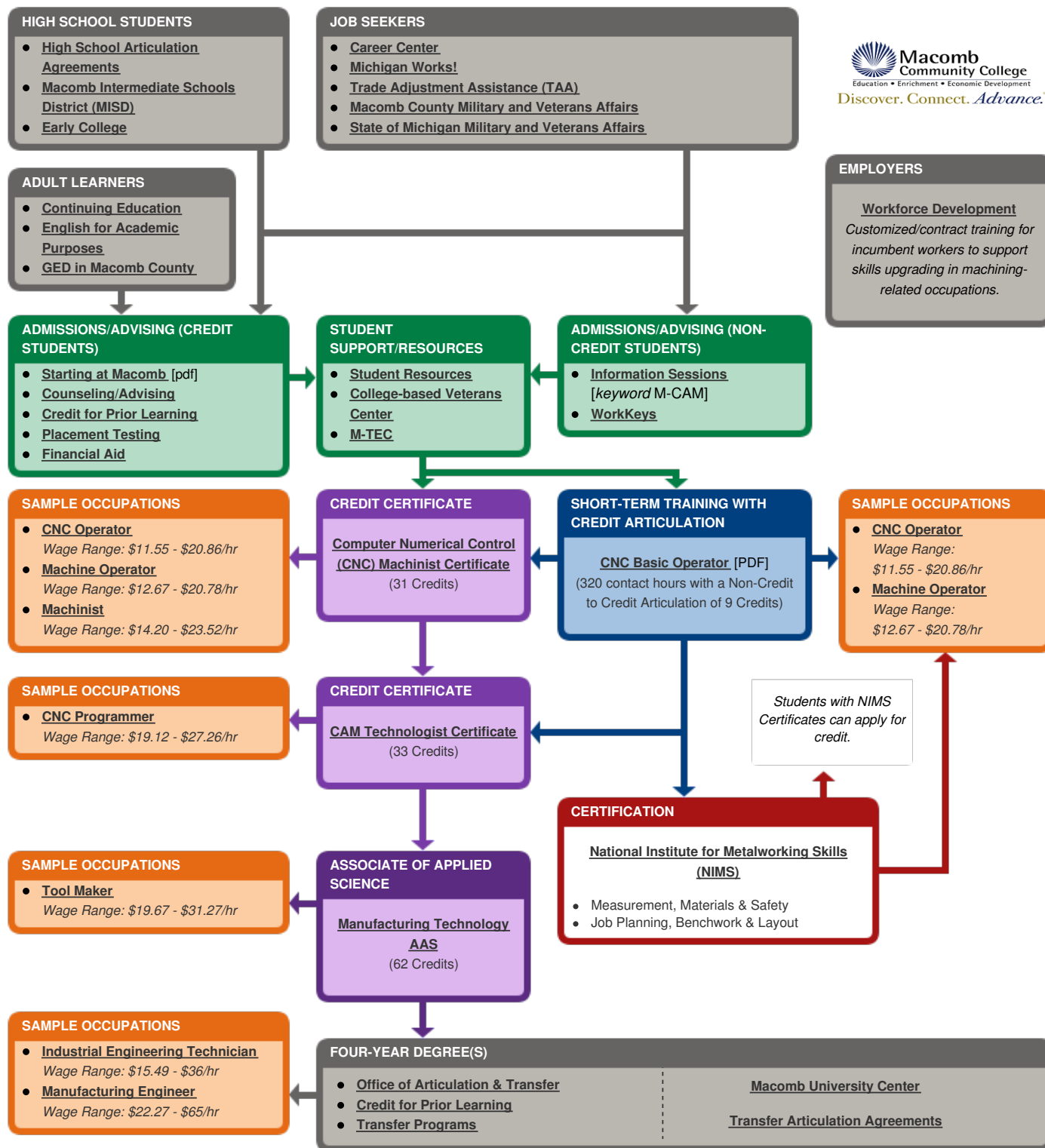
This workforce solution was funded by a grant awarded by the U.S. Department of Labor's Employment and Training Administration. The solution was created by the grantee and does not necessarily reflect the official position of the U.S. Department of Labor. The Department of Labor makes no guarantees, warranties, or assurances of any kind, express or implied, with respect to such information, including any information on linked sites and including, but not limited to, accuracy of the information or its completeness, timeliness, usefulness, adequacy, continued availability, or ownership.

The eight community colleges and M-CAM is an equal opportunity employer/program provider. Auxiliary aids and services are available upon request to individuals with disabilities. TTY users please call 1-877-878-8464 or visit michigan.gov/mdcr. This work is licensed under a Creative Commons Attribution 4.0 International License.



Macomb Community College CAREER PATHWAYS CNC/Machining

Industry Cluster: Manufacturing



JOB LISTINGS IN MICHIGAN

Pure Michigan Talent Connect: [CNC/Machining](#)

[MacombCareerLink](#)

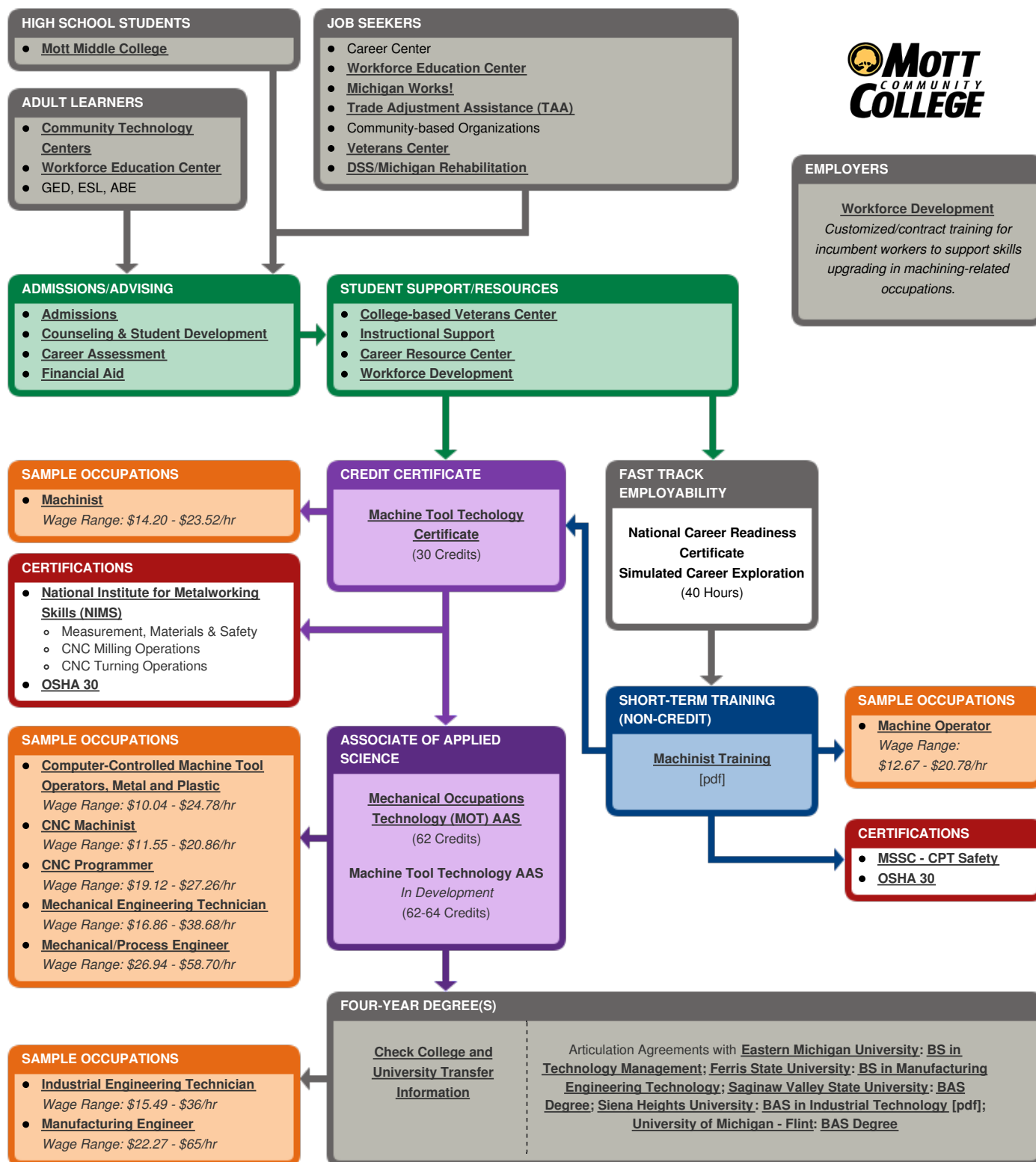
This workforce solution was funded by a grant awarded by the U.S. Department of Labor's Employment and Training Administration. The solution was created by the grantee and does not necessarily reflect the official position of the U.S. Department of Labor. The Department of Labor makes no guarantees, warranties, or assurances of any kind, express or implied, with respect to such information, including any information on linked sites and including, but not limited to, accuracy of the information or its completeness, timeliness, usefulness, adequacy, continued availability, or ownership.

The eight community colleges and M-CAM is an equal opportunity employer/program provider. Auxiliary aids and services are available upon request to individuals with disabilities. TTY users please call 1-877-878-8464 or visit michigan.gov/mdcr. This work is licensed under a Creative Commons Attribution 4.0 International License.



Mott Community College CAREER PATHWAYS CNC/Machining

Industry Cluster: Manufacturing



JOB LISTINGS IN MICHIGAN

Pure Michigan Talent Connect: [CNC/Machining](#)

[EMSI Career Coach](#)

[College Central Network @ Mott](#)

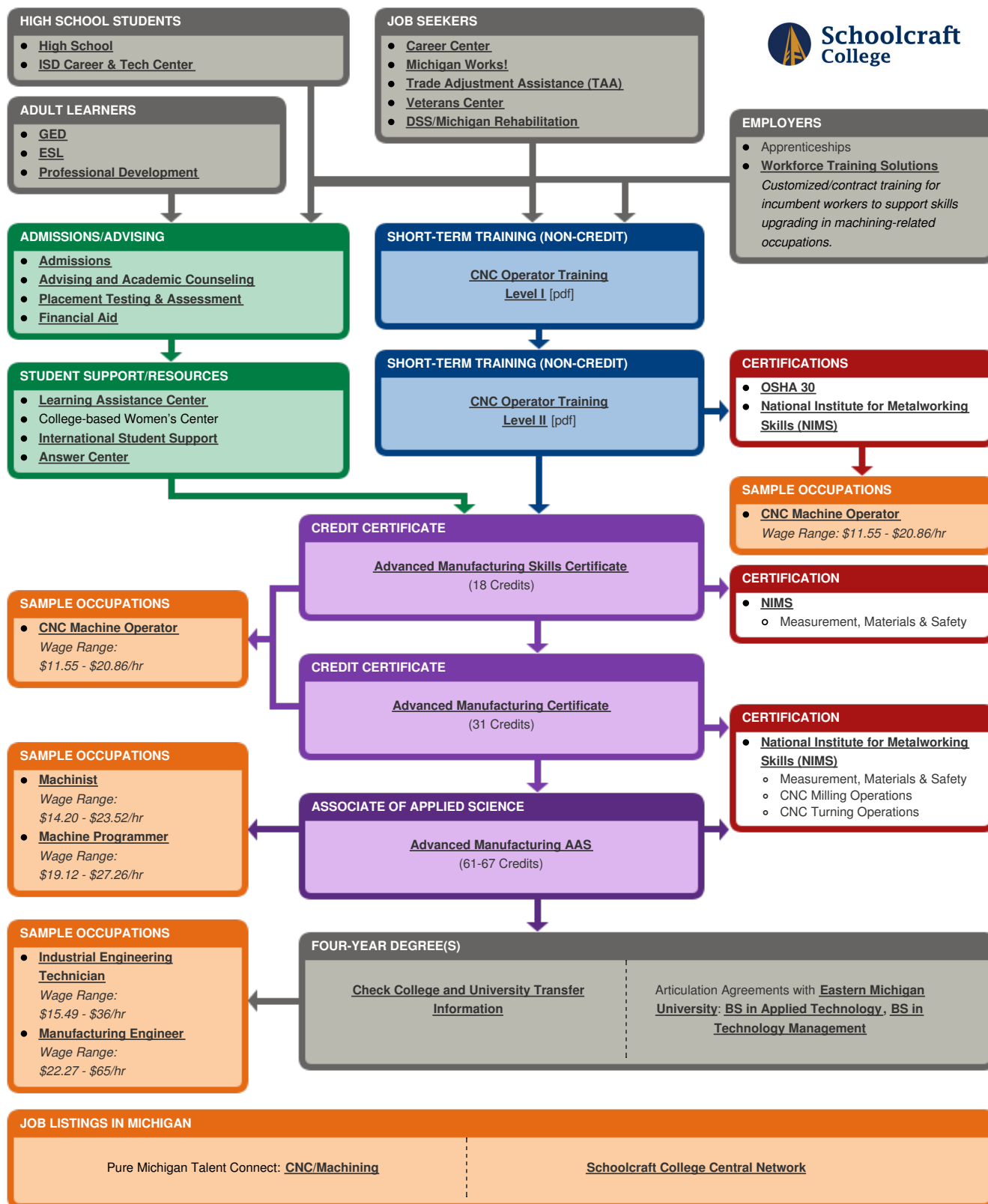
This workforce solution was funded by a grant awarded by the U.S. Department of Labor's Employment and Training Administration. The solution was created by the grantee and does not necessarily reflect the official position of the U.S. Department of Labor. The Department of Labor makes no guarantees, warranties, or assurances of any kind, express or implied, with respect to such information, including any information on linked sites and including, but not limited to, accuracy of the information or its completeness, timeliness, usefulness, adequacy, continued availability, or ownership.

The eight community colleges and M-CAM is an equal opportunity employer/program provider. Auxiliary aids and services are available upon request to individuals with disabilities. TTY users please call 1-877-878-8464 or visit michigan.gov/mdcr. This work is licensed under a Creative Commons Attribution 4.0 International License.



Schoolcraft College CAREER PATHWAYS CNC/Machining

Industry Cluster: Manufacturing



This workforce solution was funded by a grant awarded by the U.S. Department of Labor's Employment and Training Administration. The solution was created by the grantee and does not necessarily reflect the official position of the U.S. Department of Labor. The Department of Labor makes no guarantees, warranties, or assurances of any kind, express or implied, with respect to such information, including any information on linked sites and including, but not limited to, accuracy of the information or its completeness, timeliness, usefulness, adequacy, continued availability, or ownership.

The eight community colleges and M-CAM is an equal opportunity employer/program provider. Auxiliary aids and services are available upon request to individuals with disabilities. TTY users please call 1-877-878-8464 or visit michigan.gov/mdcr. This work is licensed under a Creative Commons Attribution 4.0 International License.

