

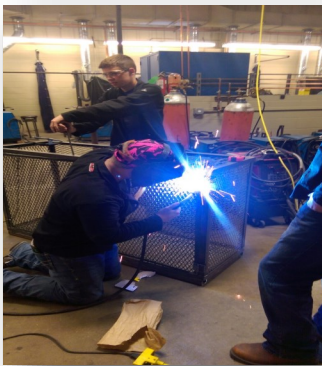
NEW
beginnings...
ENDLESS
possibilities.



Missouri State-West Plains is a teaching and learning institution providing quality post-secondary educational opportunities to the communities we serve.



Agricultural Business



Welding Technology

This workforce product was funded by a grant awarded by the U.S. Department of Labor's Employment and Training Administration. The product was created by the grantee and does not necessarily reflect the official position of the U.S. Department of Labor. The U.S. Department of Labor makes no guarantees, warranties, or assurances of any kind, express or implied, with respect to such information, including any information on linked sites and including, but not limited to, accuracy of the information or its completeness, timeliness, usefulness, adequacy, continued availability or ownership.

Equal Opportunity/Affirmative Action/Minority/
Female/Veterans/Disability Employer and Institution



**GREATER OZARKS CENTER
FOR ADVANCED TECHNOLOGY**

AN EDUCATIONAL PARTNERSHIP OF:

Renovation Grant Provided by:
Delta Regional Authority

Missouri State University
WEST PLAINS

WEST PLAINS
MISSOURI

SCCC
South Central Center
SP

GO CAT 417-255-7784

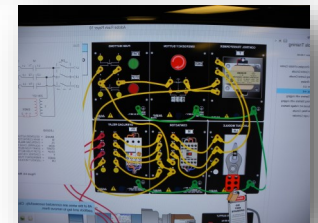
**Associate of Applied Science
Technology**

Certificates
Alternative Energy
Manufacturing Technology
Technology Management
Agricultural Business



Alternative Energy

Manufacturing Technology



Associate of Applied Science in Technology by Missouri State University - West Plains is licensed under a [Creative Commons Attribution 4.0 International License](https://creativecommons.org/licenses/by/4.0/)

What Type of Work Will I Do?

Technology Management graduates have knowledge and experience in areas of management, quality, safety, project management and supervision. Jobs may include Supply Chain Technician, Safety Technician, Quality Control Technician, Project Coordinator.

Manufacturing technology graduates have knowledge and experience in materials, automated manufacturing, applied electricity and electronics, mechanical systems and fluid power, welding, and supervision. Jobs may include Manufacturing Technician, Maintenance Technician, Welding Technician, Electrical Technician and Supply Chain Technician.

Alternative Energy graduates have knowledge and experience in chemistry, plant science, agricultural business, biofuels, solar, wind, and sustainable agriculture. Jobs may include Agricultural Technician, Electrical Technician, Customer Service, Solar Installer, Renewable Energy Technician and Operations Technician.

Agri-Business graduates have knowledge of how science and technology direct and enhance farming operations. You will learn the latest technology, like hydroponics, and use of machinery and farming concepts that will help run a successful business operation.

Who's Hiring

Armstrong Flooring—West Plains
Alfa—Jefferson City
Briggs & Stratton—Poplar Bluff
Caterpillar—Pomona
Cenetra—Columbia
DRS Technologies—West Plains
SRC—Springfield
Timberland Forest Products—West Plains

What Is The Employment Outlook

For **Technology Management graduates** employment statewide is expected to grow more than 10% by 2022. Average salary is \$38-45,000. Employer include manufacturing, laboratories, research facilities, and contractors.

For **Manufacturing graduates** employment in South Central Missouri is expected to grow by 8.5% by 2022 with 28.5% coming from new growth. Average salary is \$40,108. Top employers are DRS Technologies, Armstrong, Caterpillar, Arlee and Regal.

For **Alternative Energy graduates** employment in South Central Missouri is expected to grow by 5-8% by 2022. Average salary is \$40,000. Top employers are Perennial Energy, Emerson, Missouri Sun Solar, and City Utilities.

For **Agri-Business graduates** employment can be with an established farming operation or owning your own business. Missouri's agriculture industry is 2nd in the nation with opportunity in many career areas.

Manufacturing Occupation Profile

Manufacturing Production Technicians set up, test and adjust manufacturing machinery or equipment. They may use any combination of electrical, electronic, mechanical, hydraulic, pneumatic or computer technologies.

Knowledge of machines, tools, production processes, and quality control are important in this occupation. Production Technicians need critical thinking and problem solving skills. They should be able to determine when and what kind of maintenance is needed on equipment and machines.

Entry Wage: \$35,970
Average Wage: \$53,240
Experienced Wage: \$61,880

Based on data from Missouri Economic Research Information Center (MERIC)

Our Partners

South Central Workforce Investment Board and the Missouri Job Center are University partners and may be able to assist you with financial aid and supportive services to help you reach your educational and employment goals.

Whether you are dealing with job loss, career changes, or planning for your future, there are many resources available!

Contact the West Plains Job Center at 417-256-3158 and begin your exploration.



South Central Career Center partners with MSU-WP through a consoritial agreement and offers career and technical education training.

