

# ATTENTION FACULTY AND STAFF



All healthcare students who meet one of the following criteria are eligible for BlendFlex classes:

- a Trade Adjustment Assistance (TAA) or Workforce Innovation and Opportunity Act (WIOA) student.
- military veteran or dependent.
- unemployed or underemployed: temporary job; available for full-time but had to settle for part-time; negatively impacted by downsizing.
- rural county resident.
- displaced homemaker.
- single parent.

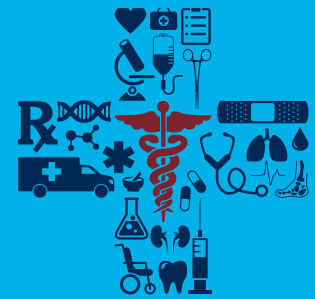
BlendFlex classes provide students **flexibility** to attend classes online, face to face, or via telepresence.

BlendFlex classes\* offered are **ALHS 1011, ALHS 1040, ALHS 1060, ALHS 1090, BIOL 2113, BIOL 2114, ENGL 1010, MATH 1012, PSYC 1010, and PSYC 1101.**

\*Check schedule for availability as new courses are added periodically.

BlendFlex participants are provided **FREE** on-campus tutoring and 24/7 online tutorial service; ability to attend class anytime, any place, and on any device; classes recorded for later review and ongoing support for career advancement.

To find out more about the BlendFlex classes, contact Anne Sartain, Health Science Success Coach (478) 218-3266 | [asartain@centralgatech.edu](mailto:asartain@centralgatech.edu) [www.centralgatech.edu/ie/cghwa/cghwa.html](http://www.centralgatech.edu/ie/cghwa/cghwa.html)



CENTRAL GEORGIA  
HEALTHCARE WORKFORCE ALLIANCE

CENTRAL GEORGIA  
**cgtc**  
TECHNICAL COLLEGE

Equal Opportunity Institution