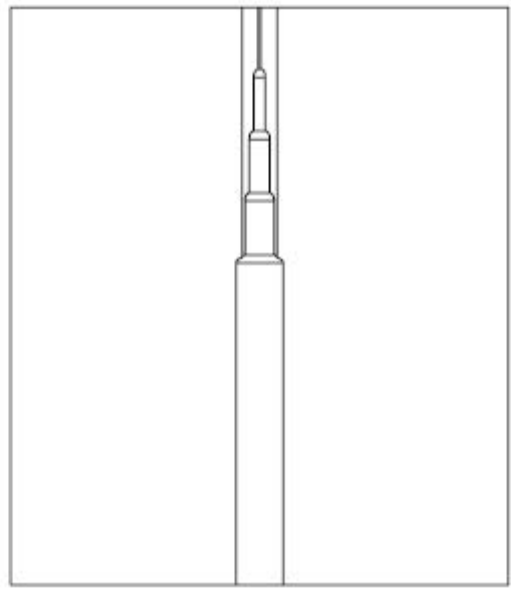
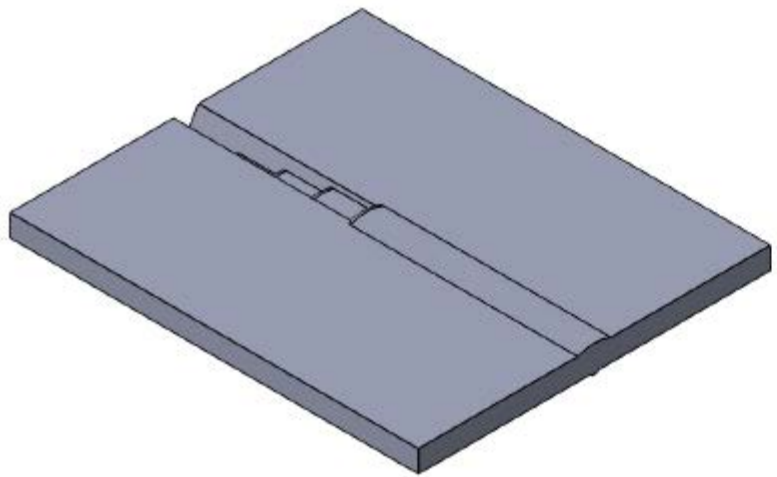


2

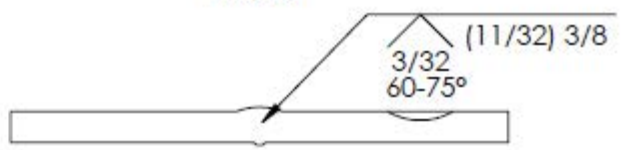
1

B

B



FRONT



SIDE

A

A

| | |
|---------------------------|---------------|
| PROCESS: | SMAW |
| ELECTRODE CLASSIFICATION: | E6010/E7018 |
| ELECTRODE SIZE: | 3/32" or 1/8" |
| POSITION: | 2 G |
| WELD SIZE/ # OF BEADS: | N/A |
| AMPERAGE/WFS: | 70-160 |
| VOLTAGE: | N/A |

| | |
|---------------|-------|
| ROOT FACE: | 3/32" |
| ROOT OPENING: | 3/32" |

TITLE:
Open Root V-Groove

DIMENSIONS ARE IN INCHES
 TOLERANCES:
 FRACTIONAL ±
 ANGULAR: MACH ± BEND ±
 TWO PLACE DECIMAL ±
 THREE PLACE DECIMAL ±

| | | |
|-------------|--------------|-----|
| SIZE | DWG. NO. | REV |
| A | | |
| SCALE: 1: 4 | SHEET 1 OF 1 | |

2

1

