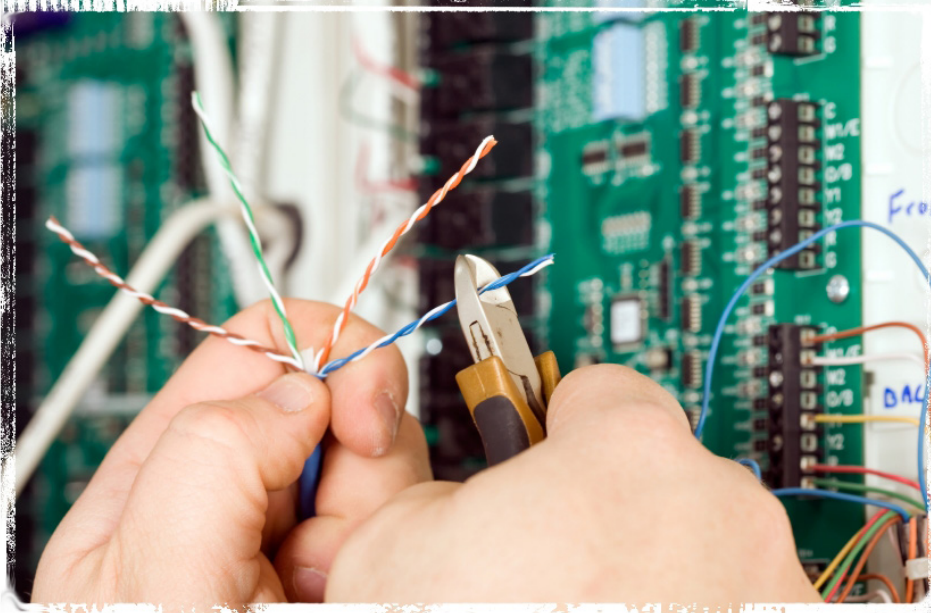


Industrial Technology-Electrical Maintenance

› Associate of Applied Science



State Fair Community College's Industrial Technology program with emphasis in Electrical Maintenance is designed to provide you with the state-of-the-art education and technical skills you need for a career as an electrical maintenance technologist. Inclusion of all major maintenance disciplines results in a comprehensive knowledge and skill base, preparing you for jobs in commercial, production, manufacturing and other industrial settings.

At SFCC, you will develop a solid background in electrical theory, computer skills and programming and hands-on application in constructing and troubleshooting electrical components, circuits and simulated manufacturing production systems. You'll learn to interpret and use electrical and fluid power schematics for troubleshooting; perform general wiring tasks in accordance with the National Electrical Code; program, troubleshoot and convert machinery to Programmable Logic Control (PLC); and learn about safety.

Both day and evening classes are offered with designated and supervised labs that provide a controlled and safe environment in which to master skills. Advanced credit may be given for previous electronics courses from high school career and technical school programs, military training, comparable instruction from other accredited institutions, or enrolling and testing out of certain courses in which the student has had on-the-job training.

Job outlook

The demand for skilled electrical maintenance technologists is increasing and job opportunities are at an all-time high. According to payscale.com, technicians can earn \$17 to \$21 an hour with salaries of \$30,000 to \$43,000 annually. With an AAS degree, you can earn from \$45,000 to \$65,000 in our local area, and more in larger metropolitan areas.

Contacts

Director of Industrial Technology and Program Coordinator

Steve Snodgrass
Fielding Technical Center
Room 279B
(660) 596-7430 - Direct Line
ssnodgrass@sfccmo.edu

Admissions Office

www.sfccmo.edu/admissions
Hopkins Student Services Center
3201 W. 16th St.
Sedalia, MO 65301
(660) 530-5833
admissions@sfccmo.edu

Admissions Checklist:

- Complete an application for admission online at www.sfccmo.edu.
- Request official academic transcript(s) from all colleges where credit was earned or attempted, including dual credit.*
- Submit ACT scores or schedule the free COMPASS test by calling the Testing and Career Center at (660) 530-5818.
- Request official high school, GED or home school transcript if required for pre-requisite or A+ eligibility.*

For specific admission requirements, visit www.sfccmo.edu; some academic programs require an additional application.

*Documents should be sent to Admissions, SFCC, 3201 W. 16th St., Sedalia, MO 65301.

Learn more.

Do more.

State Fair

Community College

Required Courses 2014-2016

AAS in Industrial Technology with Emphasis in Electrical Maintenance

Courses to complete with a grade of C or higher*

ENGL 101 English Composition I (or)	
ENGL 112 Technical Writing	3
SPTH 101 Public Speaking	3
HIST 101 U.S. History Before 1877 (or)	
HIST 102 U.S. History Since 1877 (or)	
POLS 101 American/National Government	3
MATH 108 Technical Math II (or)	
MATH 112 Intermediate Algebra.....	3
PHYS 125 Technical Science.....	4
Wellness Course	1
SS 120 Employment Strategies.....	1
IEM 106* Industrial Mechanics.....	3
IEM 108* Fluid Power Technology	3
IEM 102* Electric Fundamentals.....	3
IEM 104* Electrical Power	3
IEM 112* Control Circuit Troubleshooting	3
IEM 114* Motor Control.....	3
Program Electives	12
IEM Electives	18
Degree Total	66

Wellness Course - Select one course from the following - EDUC 110, HLTH 101, WELL 116, WELL 117, WELL 118, WELL 119, WELL 121, (or) WELL 122

Program Electives - Select 12 hours from AUTO, CAD, CNST, IEM, INDT, MACH, MATH 107, NET, RETB, RETS, RETW, (or) WELD

IEM Electives - Select 18 hours from IEM 110, IEM 116, IEM 118, IEM 122*, IEM 124*, IEM 126, IEM 128, IEM 132, IEM 134, IEM 136, IEM 138, IEM 140, or IEM 146

Total Productive Maintenance Technician Professional Certificate^

Courses to complete with a grade of C or higher*

First semester classes	
IEM 102* Electric Fundamentals.....	3
IEM 104* Electrical Power	3
IEM 106* Industrial Mechanics.....	3
IEM 108* Fluid Power Technology	3
IEM 128 Maintenance Management	3

Second semester classes

IEM 112* Control Circuit Troubleshooting	3
IEM 114* Motor Controls	3
IEM 122* Introduction to PLCs	3
IEM 124* Intermediate PLCs	3
IEM 126* Industrial Safety	3

Certificate Total 30

Advanced Manufacturing Production Technician Skills Certificate^

Courses to complete with a grade of C or higher*

CPT 102* Safety	3
CPT 104* Quality Practices and Measurements	3
CPT 106* Manufacturing Processes and Production	3
CPT 108* Maintenance Awareness	3

Certificate Total 12

Control Technology Skills Certificate

Courses to complete with a grade of C or higher*

IEM 122* Introduction to PLCs.....	3
IEM 124* Intermediate PLCs.....	3
IEM 132* Advanced PLCs	3
IEM 134* PLC Networks.....	3

Certificate Total 12

Electro-Mechanical Technology Skills Certificate

Courses to complete with a grade of C or higher*

IEM 106* Industrial Mechanics.....	3
IEM 108* Fluid Power Technology	3
IEM 102* Electric Fundamentals.....	3
IEM 104* Electrical Power	3
IEM 112* Control Circuit Troubleshooting	3
IEM 114* Motor Controls	3

Certificate Total 18

Maintenance Management Skills Certificate

Courses to complete with a grade of C or higher*

IEM 126* Industrial Safety.....	3
IEM 128* Maintenance Management	3
IEM 136* General NEC Requirements	3
IEM 146* Quality Management and Control....	3

Certificate Total 12

All certificates can be applied toward the AAS degree. No courses need to be duplicated. The AAS in Industrial Technology, Professional Certificate in Total Productive Maintenance, and Skills Certificates in Control Technology, Electro-Mechanical Technology and Maintenance Management are also offered at SFCC-Eldon, 112 S. Pine, (573) 348-0888 sfcmo.edu/eldon.

Gainful Employment Disclosure - For more information about our graduation rates, the median debt of students who completed these certificates, and other important information, please visit www.sfcmo.edu/industrialtechnology.

^These programs are part of MoManufacturingWINS,** a grant program funded by the U.S. Department of Labor. The grant funding provides tuition assistance to eligible students and additional application requirements apply.

 This work is licensed under a Creative Commons Attribution 4.0 International License. To view a copy of this license, visit <http://creativecommons.org/licenses/by/4.0/>.

**This workforce solution was funded by a grant awarded by the U.S. Department of Labor's Employment and Training Administration. The solution was created by the grantee and does not necessarily reflect the official position of the U.S. Department of Labor. The Department of Labor makes no guarantees, warranties, or assurances of any kind, express or implied, with respect to such information, including any information on linked sites and including, but not limited to, accuracy of the information or its completeness, timeliness, usefulness, adequacy, continued availability, or ownership.

NOTE: Not all courses are offered every semester. Check with an advisor. For a complete description of degree requirements and for course descriptions, please visit www.sfcmo.edu and select Course Catalog, or call the Admissions Office at (660) 530-5833. The catalog and any subsequent addendums are the official source for a program's sequence of courses.

4/14

State Fair Community College does not discriminate on the basis of race, color, national origin, sex, disability, religion, sexual orientation, veteran status, or age in its programs and activities or in employment. The following persons have been designated to handle inquiries regarding the nondiscrimination policy: Director of Human Resources, Hopkins Student Services Center, (660) 596-7484, or Dean of Student and Academic Support Services, Hopkins Student Services Center, (660) 596-7393. The Hopkins Center is located on SFCC's Sedalia campus at 3201 W. 16th St., Sedalia, MO 65301. Inquiries also may be directed to the U.S. Department of Education, Office of Civil Rights at OCR.KansasCity@ed.gov.

Interested persons may obtain information as to the existence and location of services, activities and facilities at State Fair Community College that are accessible to and usable by persons with disabilities by contacting the Access Advisor, Student Services Office, Hopkins Student Services Center, SFCC, 3201 W. 16th Street, Sedalia, MO 65301, (660) 530-5832.

SFCC is tobacco- and smoke-free. For details, visit www.sfcmo.edu.

