

Process Sheet – Cam 1109 Lab 3 - Mill Project Widget 3

- 1) Cut overall length to 3.250
- 2) Stand part up on 7/8 parallels & use edge finder to go to .580 wide slot. No allowance since we are working to edge, not center of hole. Use knee of mill to get .285 depth of slot. Move over to get width of .580. Do not climb cut.
- 3) Use 1/58 parallels to lay down part use edge finder to locate to be able to drill the hole. Use spot drill & then 3/16 pilot drill thru. Drill 29/64 tap drill thru. Co Sink hole. Mill 15 degree angle triangle. Go to drill press. Countersink 29/64 hole & tap hole.

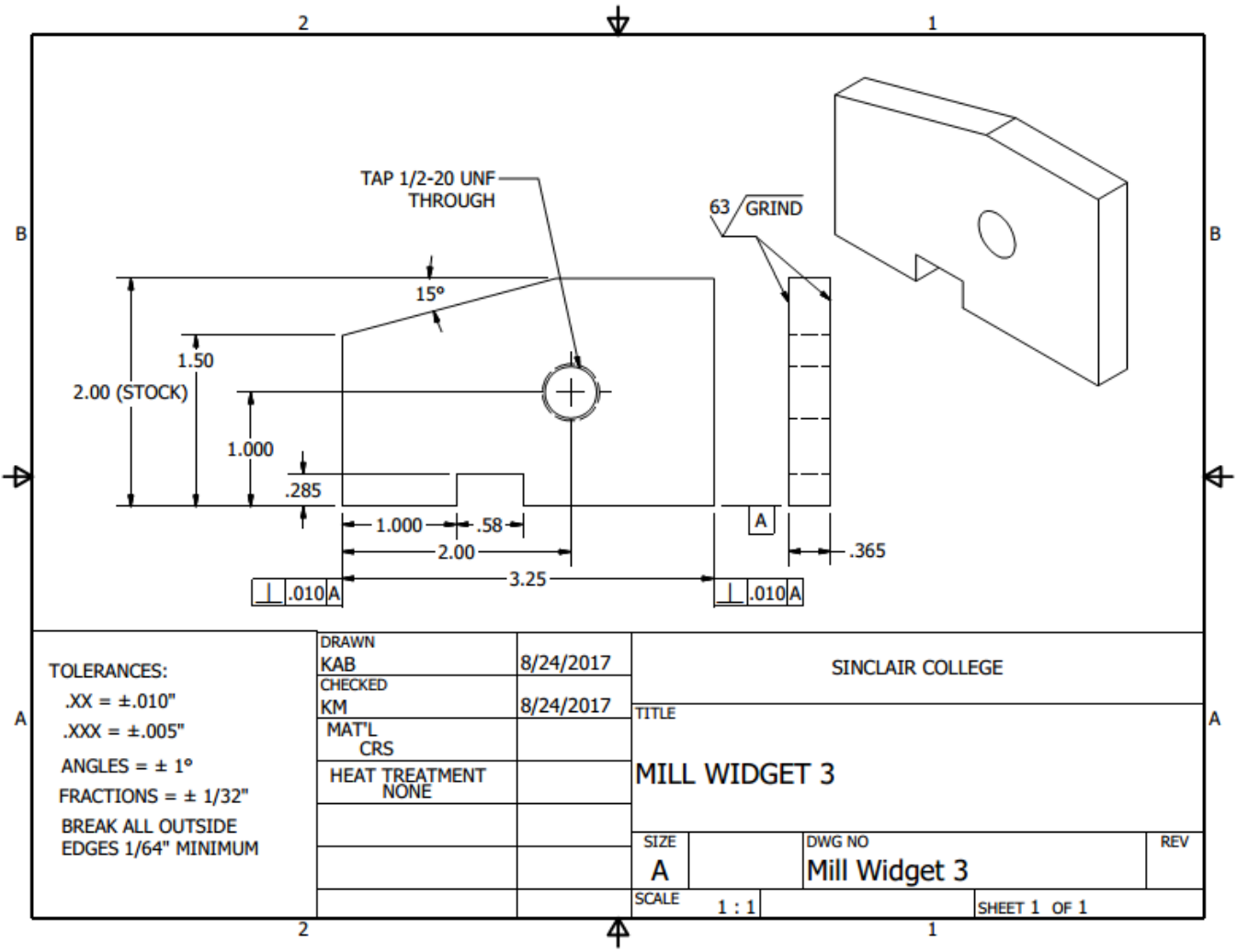
Video Resources

Lab 3.0
Mill Project
(one video)

*ADD A QR CODE
HERE TO PROVIDE
EASY ACCESS TO
THE LAB VIDEO*

Video URL Link:

Lab 3 – INSERT URL LINK HERE



This workforce product was funded by a grant awarded by the U.S. Department of Labor's Employment and Training Administration. The product was created by the grantee and does not necessarily reflect the official position of the U.S. Department of Labor. The U.S. Department of Labor makes no guarantees, warranties, or assurances of any kind, express or implied, with respect to such information, including any information on linked sites and including, but not limited to, accuracy of the information or its completeness, timeliness, usefulness, adequacy, continued availability, or ownership.



Unless otherwise noted, this work is licensed under a [Creative Commons Attribution 4.0 International License](http://creativecommons.org/licenses/by/4.0/). It is attributed to Ohio Technet. To view a copy of this license, visit <http://creativecommons.org/licenses/by/4.0/>.