

▼▼▼
**CONTACT THE
NAVIGATOR!**

SHELLY ARMSTRONG
413.236.1639
sarmstrong@berkshirecc.edu

berkshirecc.edu/gpstem



STAY ON COURSE



*Guided Pathways to
Success for STEM*

COMMUNITY HEALTH

What our College & Career Navigator can do for you:

- Assist in registering for GPSTEM programs at BCC
- Help with GPSTEM career pathways plan
- Help students overcome barriers that could prevent student success
- Direct students to internal and external resources for assistance
- Guide students through the process of registration, funding sources and general questions
- Provide guidance for transfer or employment
- Connect students to BerkshireWorks, the county's one-stop career center, providing comprehensive services for job-seekers including career readiness, placement and unemployment services
- Provide one-on-one assistance throughout your educational career, from admissions to employment or transfer



This program was 100% funded by a \$20,000,000 grant awarded by the U.S. Department of Labor's Employment and Training Administration. Grant #TC-26450-14-60-A-25. This product was created by the grantee and does not necessarily reflect the official position of the U.S. Department of Labor. The U.S. Department of Labor makes no guarantees, warranties, or assurances of any kind, express or implied, with respect to such information, including any information or linked sites and including, but not limited to accuracy of the information or its completeness, timeliness, usefulness, adequacy, continued availability, or ownership.

Berkshire Community College is an affirmative action/equal opportunity institution and does not discriminate on basis of race, creed, religion, color, gender, gender identity, sexual orientation, age, disability, genetic information, maternity leave, military service, and national origin in its education programs or employment, pursuant to Massachusetts General Laws: Chapter 151B and 151C; Title VI, Civil Rights Act of 1964; Title IX; Education Amendments of 1972; Section 504; Rehabilitation Act of 1973; Americans with Disabilities Act; and regulations promulgated thereunder, 34 C.F.R. Part 100 (Title VI), Part 106 (Title IX) and Part 104 (Section 504). All inquiries concerning application of the above should be directed to Deborah Cote, Vice President for Human Resources and Affirmative Action Officer; and Coordinator of Title IX and Section 504, at 413-236-1022, SBA Annex, Room A-20.

Berkshire Community College values inclusion and equal access to its programs and activities and is committed to a climate of mutual respect and full participation. Our goal is to create learning environments that are usable, equitable, inclusive and welcoming. If you are an individual with a disability and require reasonable academic accommodations, you are advised to contact the Disability Resource Center (DRC) prior to the start of a course to discuss your accommodation needs and options. The DRC will work collaboratively with students with disabilities to develop effective accommodation plans. The DRC is located in the Susan B. Anthony Building in A-118. For an appointment, please call 413-236-1660.

Rev. Mar 2018



Community Health

The Community Health program trains public health professionals who can offer a range of services including outreach, local health care system and resource navigation, health assessment, health education, counseling, public health program development, implementation, and evaluation.

Berkshire Community College's Community Health program offers students options in Certificate and Degree programs.

By earning a **Community Health Worker Certificate** a student will attain the skills needed to enter the workforce.

The credits earned in the certificate program apply to the **Associate Degree, Health Science—Community Health Option**. This degree closely aligns with the first two-year requirements of Public and Community Health programs at four-year colleges and universities, setting students up for transfer to a Baccalaureate program in Public Health, Community Health, and Health Education.

Learn more at www.berkshirecc.edu/gpstem.

JOB GROWTH

The U.S. Bureau of Labor Statistics predicts employment of Community Health Workers is **projected to grow 16 percent from 2016 to 2026**, faster than the average for all occupations. Growth will be driven by efforts to improve health outcomes and to reduce healthcare costs by teaching people healthy behaviors and helping to navigate available healthcare services.

WAGES

In Massachusetts, Community Health Workers earn a mean wage of **\$43,390 per year**.

Source: 2016, U.S. Bureau of Labor Statistics

ENROLL NOW AT BCC

Begin working toward your
A.S. or Certificate in Community Health —
and start your pathway to success!

Certificate

Certificate — Community Health Worker

WHAT does a Community Health Worker (CHW) do?

Community Health Workers are frontline public health workers with a deep understanding of the communities they serve. They can offer a range of services including outreach, health services referrals, assessment of community and individual public health problems, health education, and counseling about healthy lifestyles. Community Health Workers are advocates who motivate and empower their clients and who connect community members to local health and social service providers.

WHERE can a Community Health Worker Certificate take you?

Job-related Titles:

Community health advocate, community outreach worker, peer navigator, community health program coordinator, health navigator, health educator, care coordinator, etc.

Associate Degree

Associate in Science — Health Science, Community Health Option

WHERE can an Associate Degree in Health Science (Community Health Option) take you?

Students can choose to enter the workforce after completing the Associate of Science degree or continue their education at a four-year institution of higher education. Transfer options include a Bachelor's degree in Public Health, Community Health, or Community Health Education.

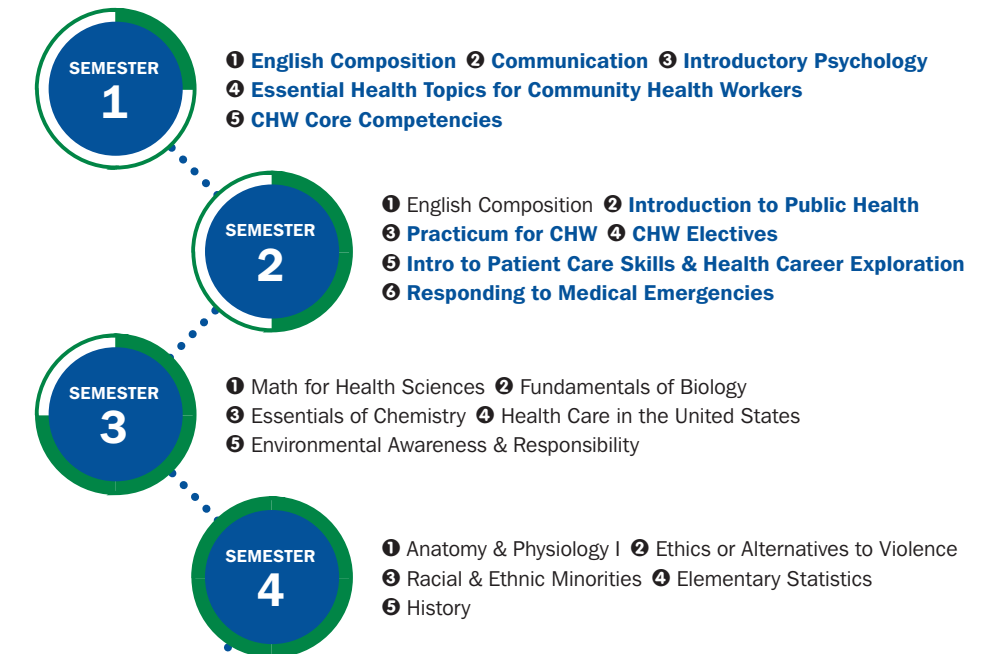
Job-related Titles:

Community health worker, community outreach worker, program coordinator, community health project assistant, health navigator, assistant site manager, etc.

Stay on Course

Suggested Community Health Pathway

The diagram below shows the suggested pathway to earn the Associate Degree in Health Science—Community Health Option in four semesters. Courses that are also required to earn the Community Health Worker Certificate are shown in **BLUE** in the diagram below.



2-YEAR DEGREE
ENTRY LEVEL POSITIONS

Entry- and mid-level positions in Community Health

Advanced positions in Public Health, Community Health, and Community Health Education

4-YEAR DEGREE
ADVANCED POSITIONS

EMPLOYMENT

Industries most commonly employing holders of Community Health Worker Certificate and Associate Degree in Community Health:

- Organizations/agencies providing community food & housing
- Emergency & other relief services
- Social advocacy organizations
- Outpatient care centers
- Individual & family services