



APRIL 2013

IMPORTANT DATES

- 2nd Quarter Progress Report Due April 14, 2013.
- Full Consortium Meeting, April 9, 2013 at 10:30 am MST.
- Full Consortium Meeting, April 23, 2013 at 10:30 am MST.
- Full Consortium Meeting, May 14, 2013 at 10:30 am MST.

INSIDE THIS ISSUE:

Fiscal Features	2
Data Dialog	3
Coaches' Corner	4
Project Director's Note	4
Coming Soon! Instructional Design and Success Stories	

The Journey Begins...

Collective Impact begins by setting a goal and then builds an ecosystem of (resources) who create common strategies and coordinate integrated activities among them to achieve the goal. (Schmidt, 2012)

As Round 2 TAACCCT grant recipients, the Consortium for Healthcare Education Online (CHEO) is creating true Collective Impact. The CHEO Project is in place to help community college students develop the skills needed to secure viable and sustainable employment in the allied health fields. Co-Grantee partners hail from across a five state region including Alaska, Colorado, Montana, South Dakota, and Wyoming. The Project's task is to enroll 3,037 participants in CHEO related courses, and 2,460 of these students will participate in state-of-the art remote experiments from one of the NANSLO lab sites located in Canada, Montana, and Colorado. Through the CHEO project, 2,460 students will complete online/hybrid programs, and nearly 2,000 will attain allied health related credentials allowing them to step into the workforce possessing the needed skills and hire-ability employer partners need.

It is an exciting project, one that helps create solutions to a number of serious economic issues. Throughout our journey, the Consortium will share successes and problem solve challenges as they arise. Though our geographical reach is broad, we are a partnership whose mission is to Collectively Impact this nation's economy and it's future.

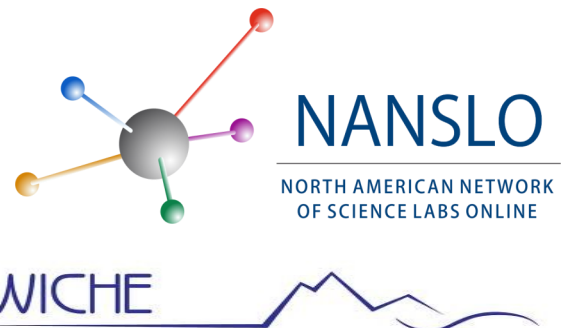
For more information about Collective Impact:

http://www.huffingtonpost.com/paul-schmitz/collective-impact_b_1920466.html.

NANSLO & WICHE Update:

What's going on with the NANSLO lab? Updates coming soon!

Watch for WICHE updates!





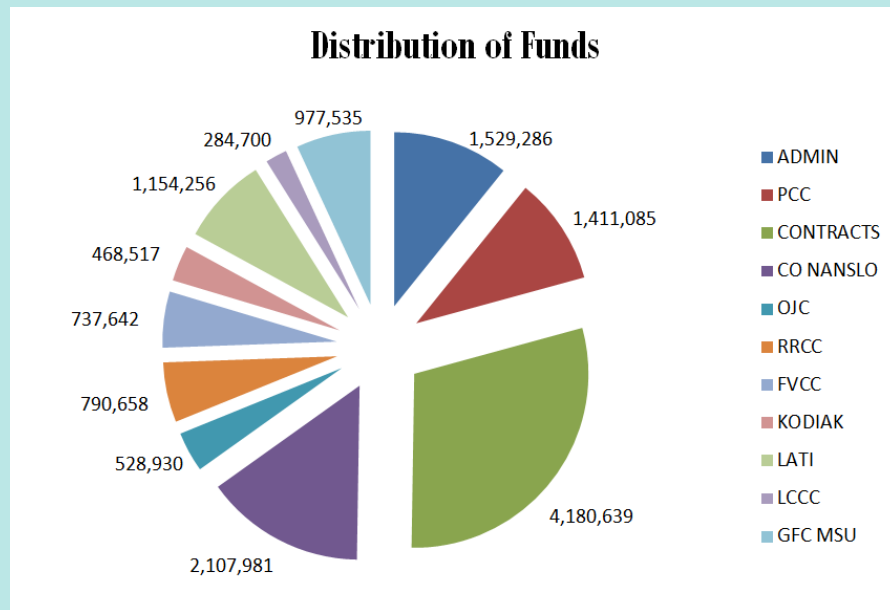
Fiscal Features

Welcome to the first CHEO newsletter. Many of you are familiar with our team; JoAnn Lopez as Grants Administrator and Laura Smith as the Accounting Technician. Each quarter we will be sending you our “fiscal features” giving brief updates from our department. We are excited and anxious to assist all our partners these next few years. With this new endeavor, change is inevitable so please let us know if you would like to see changes or additional information with this update. Contact us at joann.lopez@pueblocc.edu or 719.3549.3357, and laura.smith@pueblocc.edu or 719.549.3228. Your feedback is invaluable.

As with any government grant, there are strict financial guidelines to follow including A21, A110, and A133.. We currently follow A21 Cost Principles (2 CFR Part 220)for Educational Institutions. The guideline specifically addresses allowable, unallowable, and allowable with conditions costs. To break it down even further the Department of Labor addresses the Administrative vs. Programmatic and Direct vs. Indirect in their mandates. Be on the lookout for more specific information on these costs and how they apply to your school.

The CHEO Grant is a huge opportunity to do some wonderful things addressing rural healthcare, getting veterans, TAA workers and others back to work. While you are all out there making sure this is being done, rest assured that the Fiscal team in Pueblo will also do their part over the course of this Grant in following and monitoring these costs. We look forward to building strong partnerships with you.

“We are excited and anxious to assist all our partners these next few years.”
-JoAnn Lopez



Serving as lead fiscal agent for the CHEO Program, PCC will provide general fiscal oversight to the project and collaborate with Consortium members to accomplish proposed objectives, strategies, and deliverables.

Data Dialog

Welcome to "Data Dialog"! For those of you whom I have not met, I am the CHEO Data Analyst - Jeremy Mares. In this section I will discuss updates from the data side of the house.

Although, there is little Data to report at this point in the grant, many exciting things are happening on the Data front. Right now, I am putting significant efforts into establishing communication with each of our partners to ensure proper data collection and rigorous analysis.

This communication is key to successful research and has already begun with the Data Dialog conference calls on 03/05 and 03/11. I have constructed a small graph showing the first goal of the overall grant for each institution: Unique participants. This shows a variable distribution

“Customer Service is my #1 priority as we move forward.”

-Jeremy Mares

for performance outcomes and has implications for data analysis with unequal numbers. This, as well as many other topics, will all be expanded upon in future newsletters. Any interesting preliminary findings, as well as, any other points of interest will be

shared here so keep an eye on the updates!

Customer Service is my #1 priority as we move forward. With that I wish to extend my direct contact information so you can communicate with me on any feedback quickly.

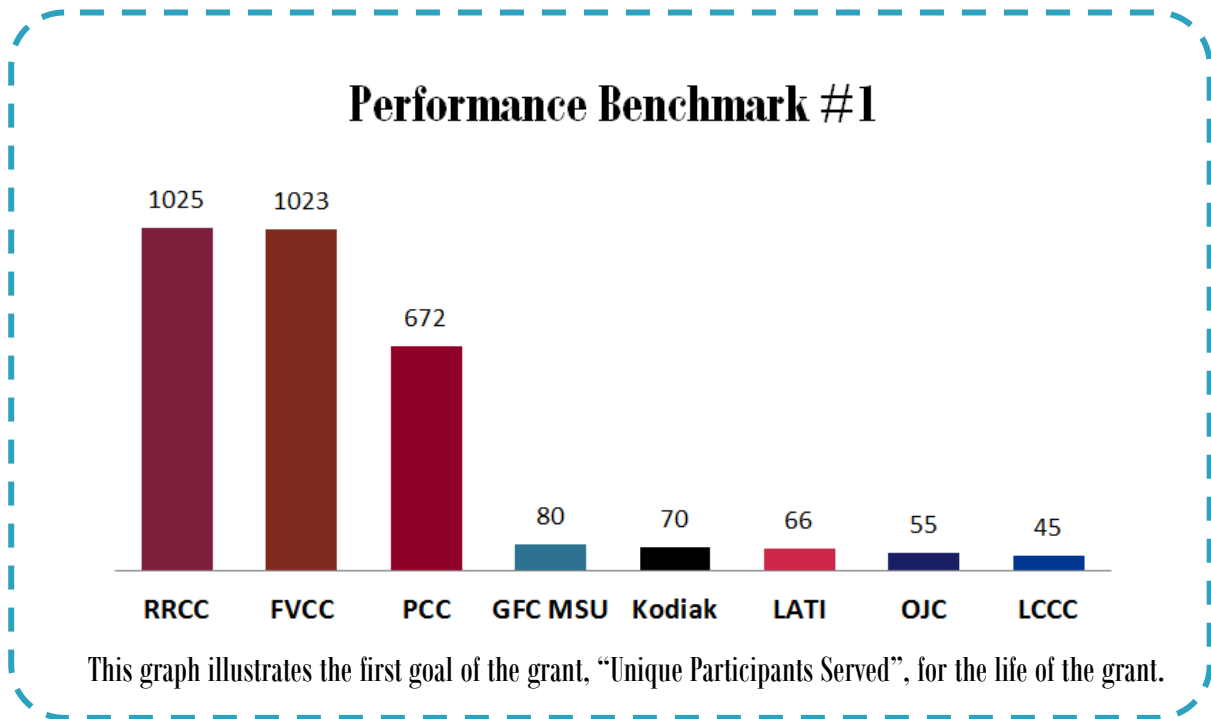
E-Mail

Jeremy.Mares@pueblocc.edu

Office Phone

719.549.3064

I look forward to working with you all. Let's stay in touch!



Coaches' Corner

On Friday, March 8th, we led a key meeting with the Pueblo Workforce center. Roughly 20 people were in attendance, including the key leadership and counselors from Workforce, as well as vital CHEO and PCC employees. In the first part of the meeting, Director Maria Fieth and Grant Writer Linda Tremblay were able to introduce the CHEO grant to Workforce personnel. Next, the academic chairs and/or faculty from EMS (Dr. Michele Sweeney), PSG (Dee Lechtenberg), and HIT (Mary McMahon and Kathleen Collins) all took time to introduce their programs and the correlating job opportunities available. Finally, we held a productive roundtable discussion regarding the seamless and collaborative referral and guidance of prospective TAA, VA, and other students to the CHEO Career Coach. Brian Homrighausen from our admissions department also enhanced the meeting

and helped us to “close the loop” as we begin to establish our process for assisting Workforce students within the CHEO online and hybrid coursework. This successful meeting will lead to several follow-up action items,

such as establishing a recruitment brochure and PowerPoint, and a telling video presentation that can be used by Workforce employees at orientations to direct potential students to the CHEO programs.



Project Director's Note

Welcome to the first official Consortium for Healthcare Education Online newsletter! The Project start-up time has provided the administrative team opportunity to get to know our consortium and contractual partners a little better, to learn systems and processes, as well as become well versed in the TAACCCT Round 2 Scope of Work. Lots of good learning has taken place already, and we are very excited to be participating in this important work. Being part of a national effort to put people back into the workforce is a humbling position, and I speak for my team when I say we are proud to be partnering with so many to make that happen. The CHEO Administrative Team is here to support your work; it is the only reason we are in place, and we take that very seriously. CHEO is backed by a supportive Federal Project Officer from the Department of Labor who stands as a resource for us in so many ways. Please know that our doors – virtually or otherwise -- are always open to you for any reason. If we do not readily have the answer, we will keep asking until we figure it out. Have ideas? Suggestions? Concerns? Please do not hesitate to share. Our job is to help you be successful.

~ *Maria Fieth*



900 West Orman Ave.
Pueblo CO, 81004-1499
Central Administration 102

Phone: 719.549.3090
E-Mail: CHEO@pueblocc.edu



"This product was funded by a grant awarded by the U.S. Department of Labor's Employment and Training Administration. The product was created by the grantee and does not necessarily reflect the official position of the U.S. Department of Labor. The Department of Labor makes no guarantees, warranties, or assurances of any kind, express or implied, with respect to such information, including any information on linked sites and including, but not limited to, accuracy of the information or its completeness, timeliness, usefulness, adequacy, continued availability, or ownership."